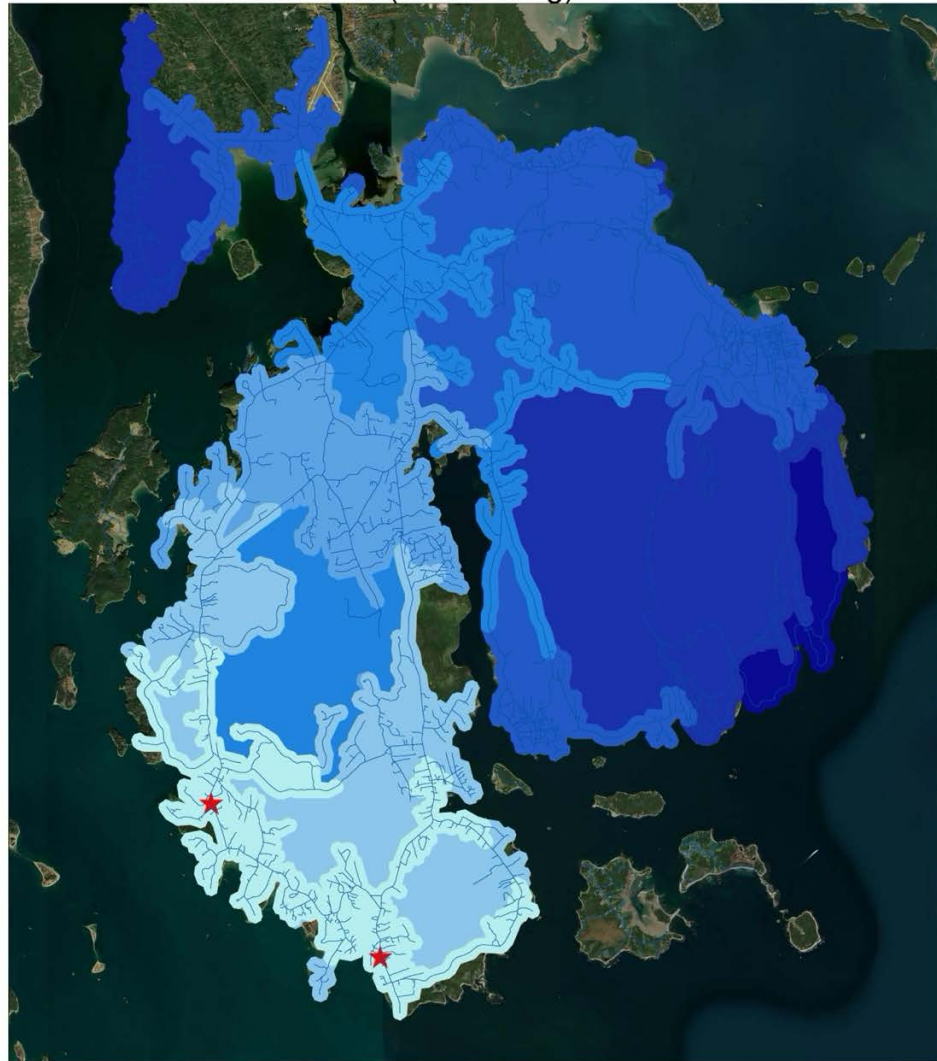


## Appendix C: Service Area Analysis Maps

A series of maps showing service area changes for community services under non-flooding scenarios and 2100 HAT Intermediate scenarios. The 2100 1% Chance Annual Flood scenario was used for emergency management facilities. Please take a look at section 4.4 for a detailed methodology of how these maps were derived.

Tremont Fire Service Area  
(No Flooding)



### Legend

★ Fire Stations

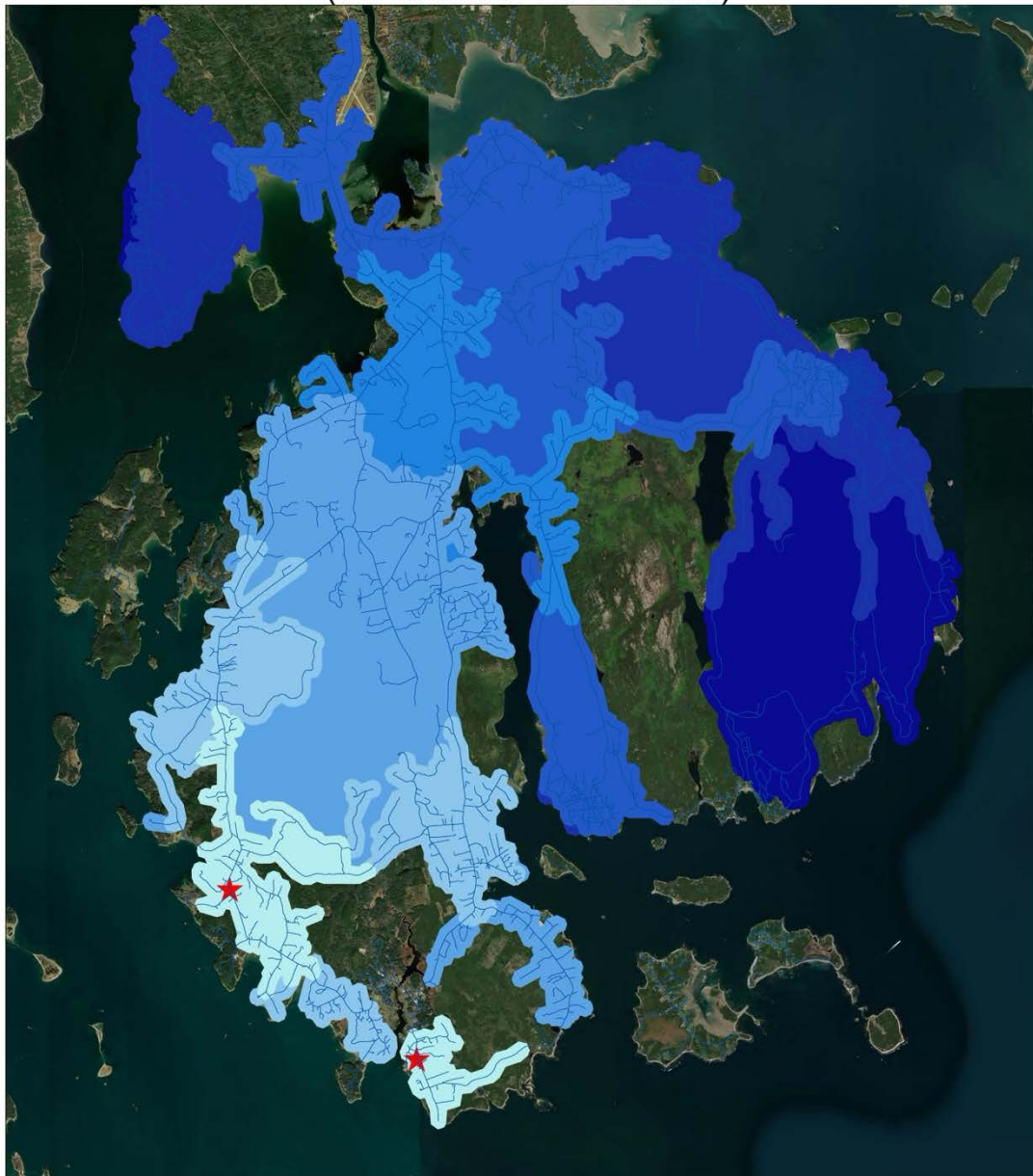
Fire Service Areas

Driving time

0-5  
5-10  
10-15  
15-20  
20-25  
25-30  
30-35

0 1.5 3 6 Miles

# Tremont Fire Service Area (1% Chance Annual Flood)



## Legend

★ Fire Stations

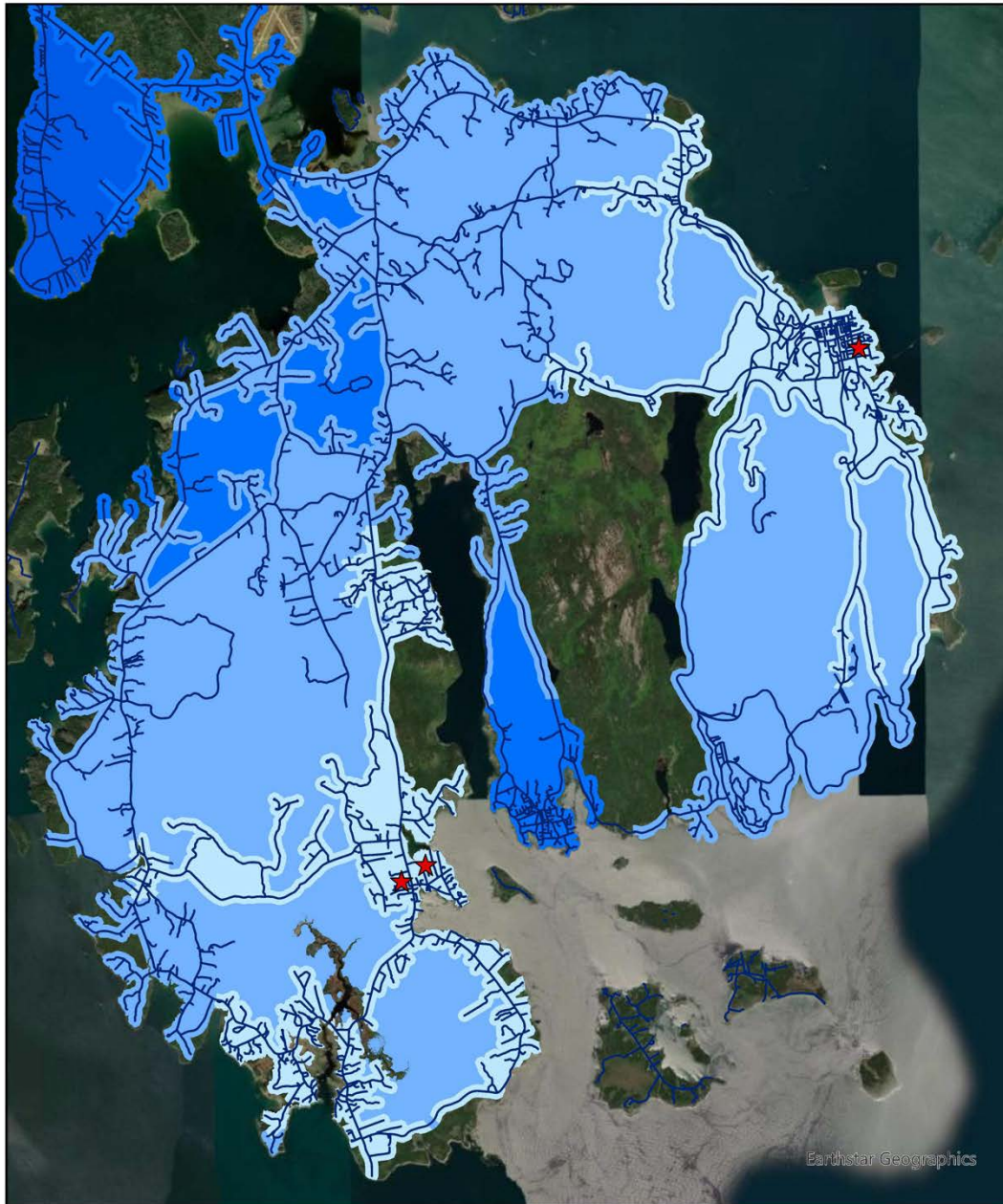
### Fire Service Areas

#### Driving time

- 0-5
- 5-10
- 10-15
- 15-20
- 20-25
- 25-30
- 30-35

0 1.5 3 6 Miles

## Tremont Healthcare Facility Service Area (No Flood)



### Legend

★ Healthcare Facilities

#### Service Area

Driving Time

15-20

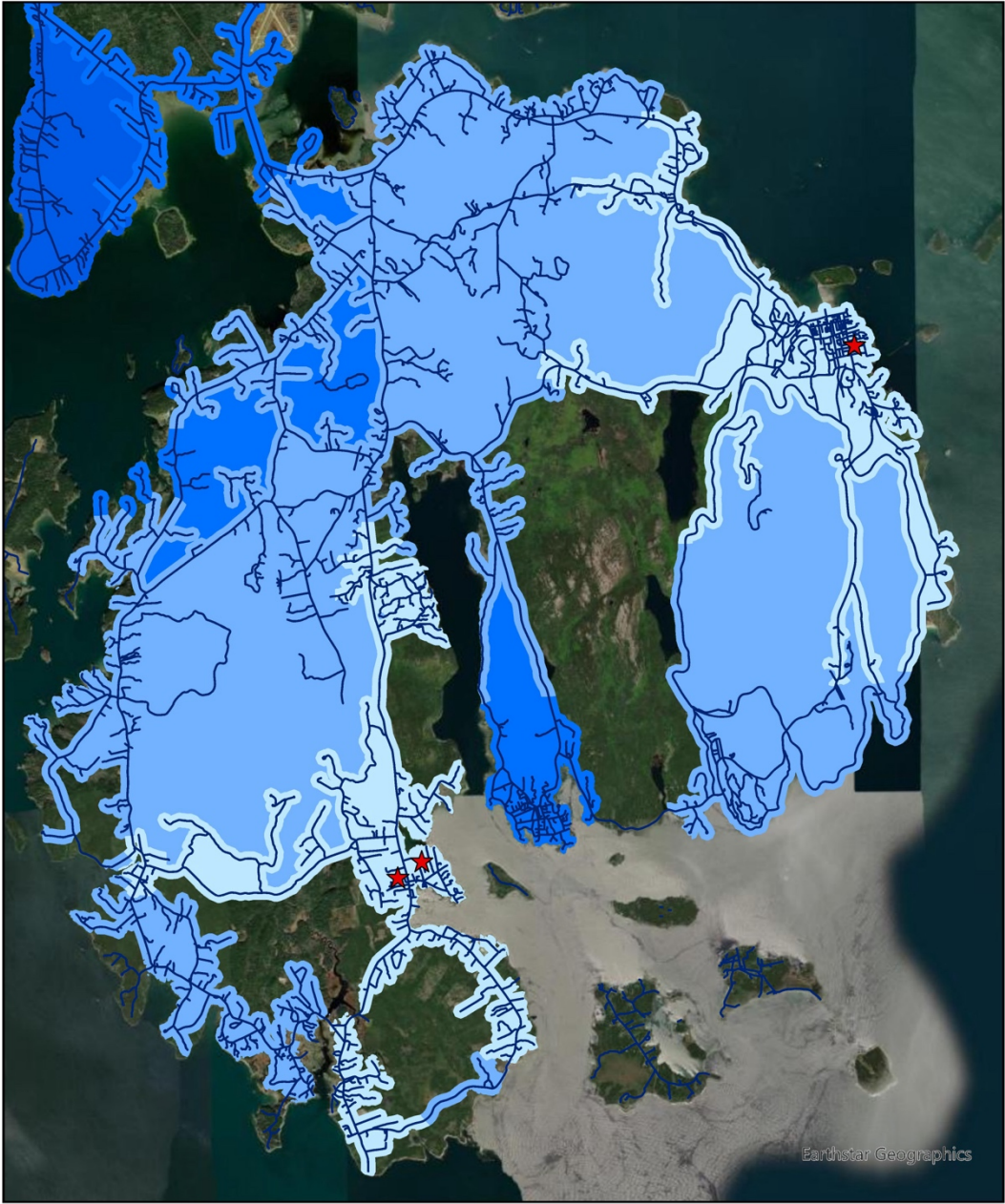
10-15

5-10

0-5

0 1.5 3 6 Miles

Tremont Healthcare Facility Service Area (2050 1% Chance Annual Flood)

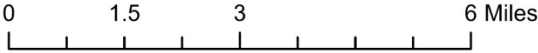


Legend

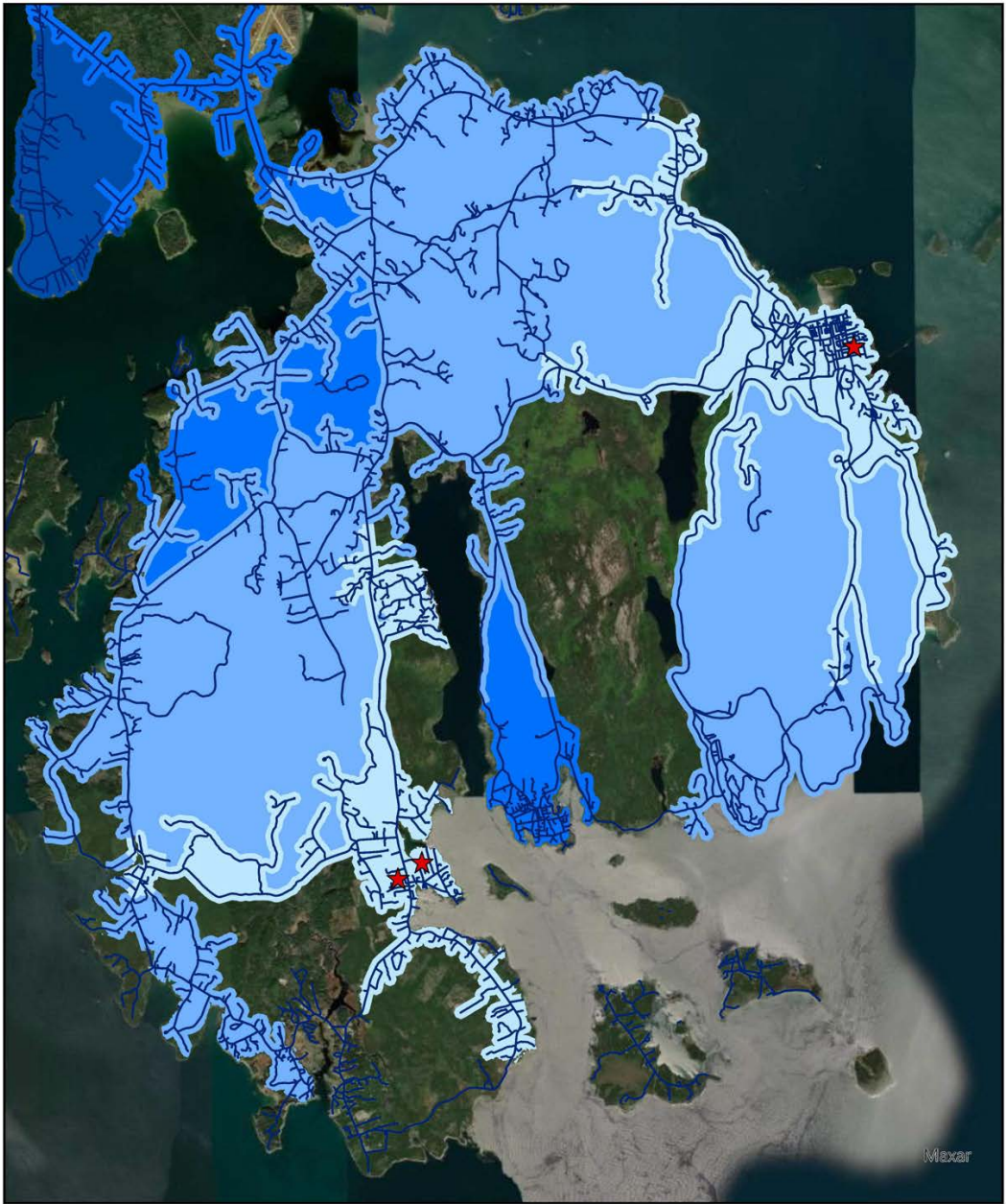
★ Healthcare Facilities

Service Area

- Driving Time
- 15-20
  - 10-15
  - 5-10
  - 0-5



Tremont Healthcare Facility Service Area (2100 1% Chance Annual Flood)



Legend

★ Healthcare Facilities

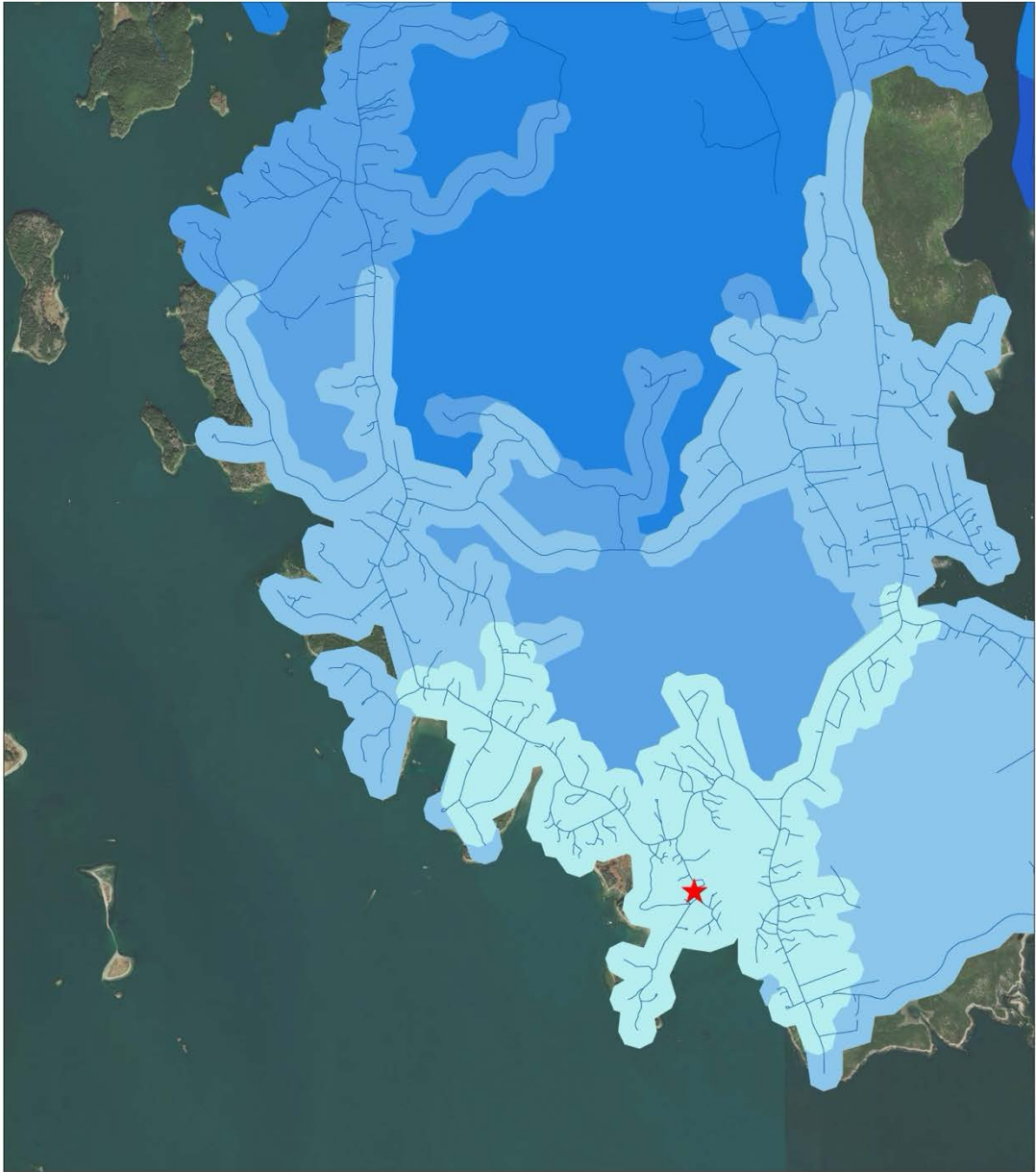
Service Area

Driving Time

- 15-20
- 10-15
- 5-10
- 0-5

0 1.5 3 6 Miles

Bass Harbor Memorial Library Service Area (No Flooding)



Legend

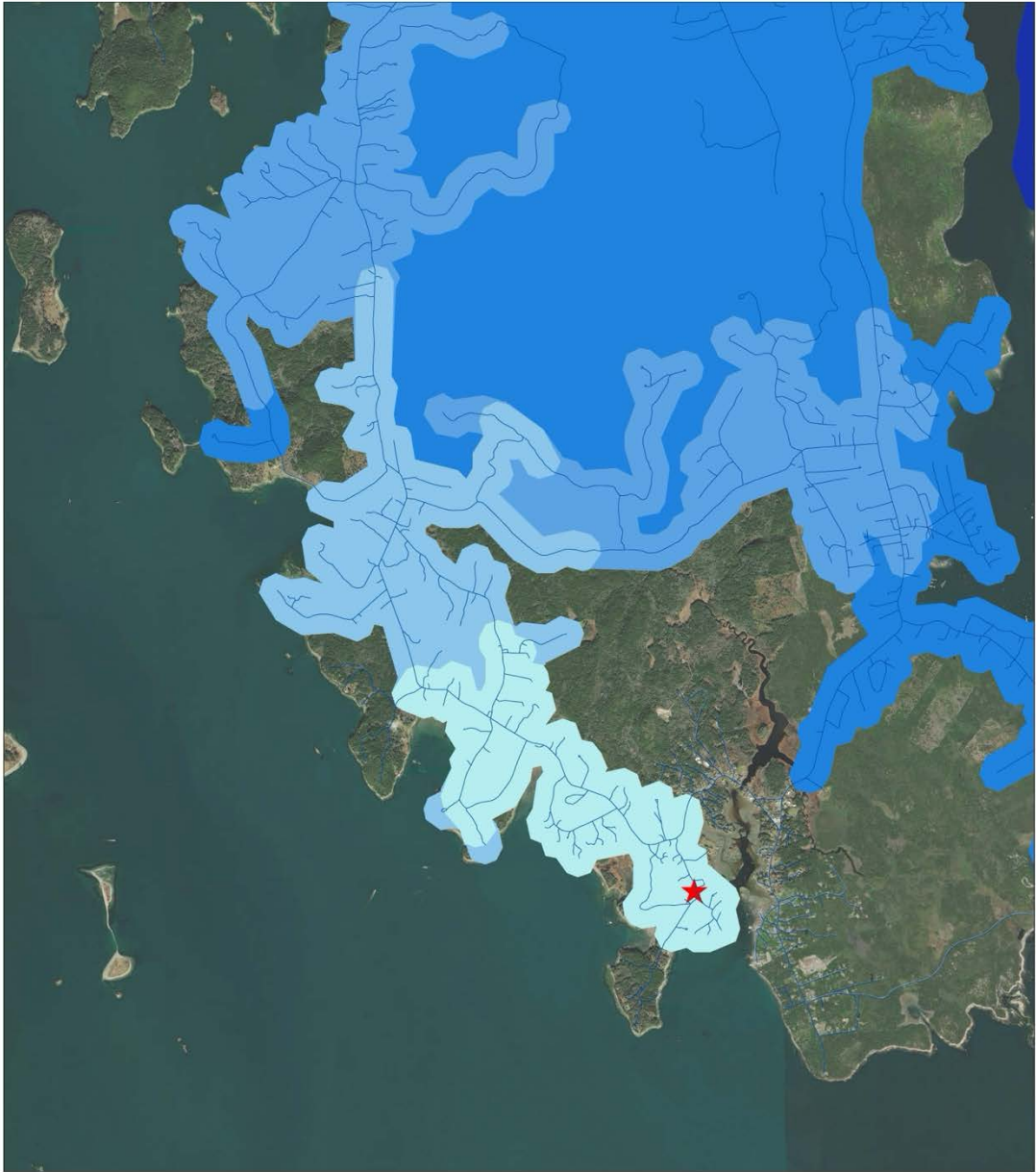
Service Area

Mins

- 0-5
- 5-10
- 10-15
- 15-20
- 20-25

★ Bass Harbor Memorial Library

Bass Harbor Memorial Library Service Area (2100 HAT)



Legend

★ Bass Harbor Memorial Library

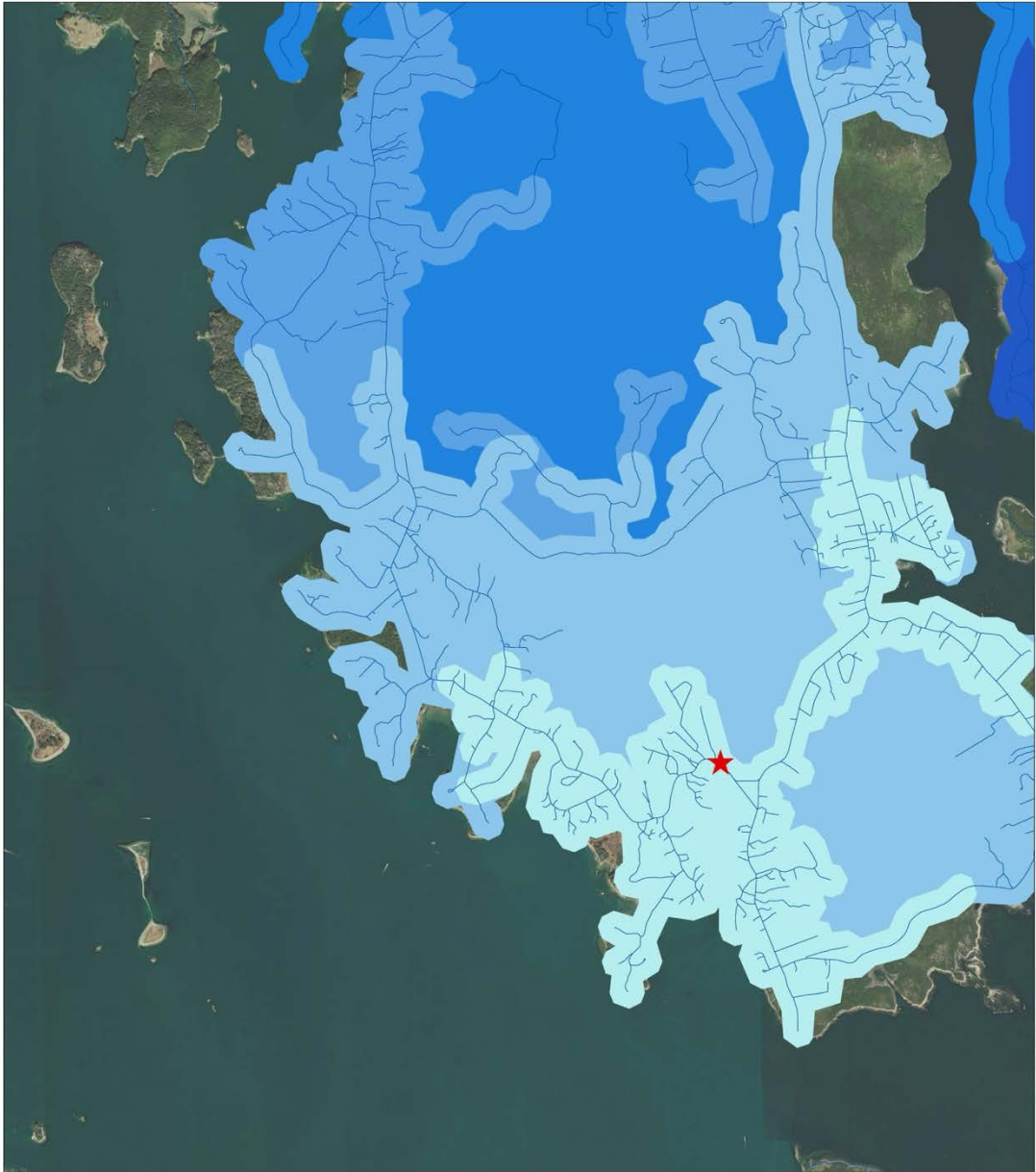
Service Area

Driving time

- 0-5
- 5-10
- 10-15
- 15-20
- 25-30



Tremont Consolidated School Service Area (No Flooding)



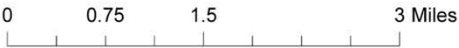
Legend

★ Tremont Consolidated School

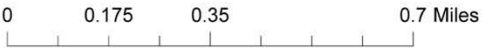
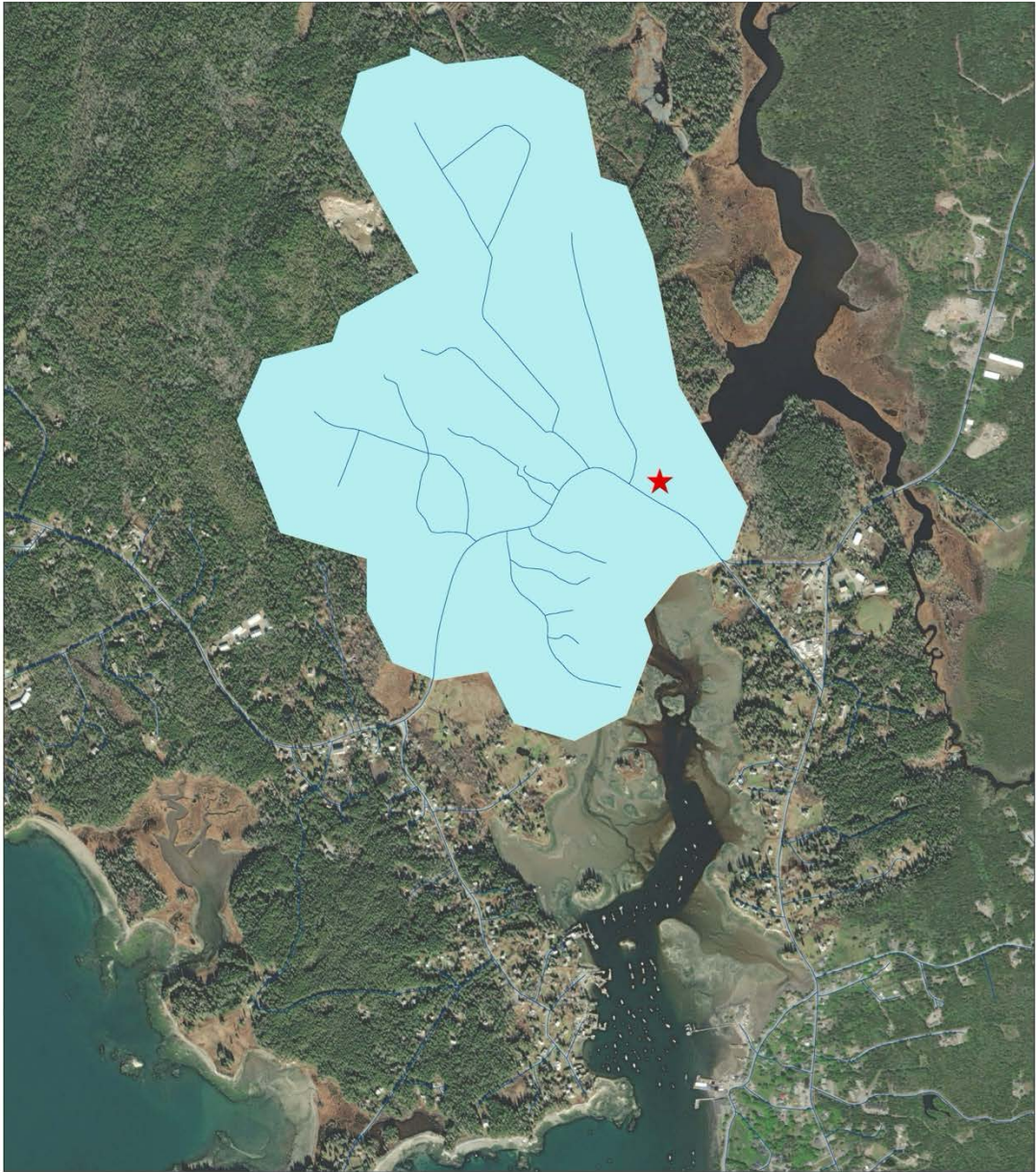
Service Area

Driving time

- 0-5
- 5-10
- 10-15
- 15-20
- 20-25



Tremont Consolidated School Service Area (2100 HAT)



**Legend**

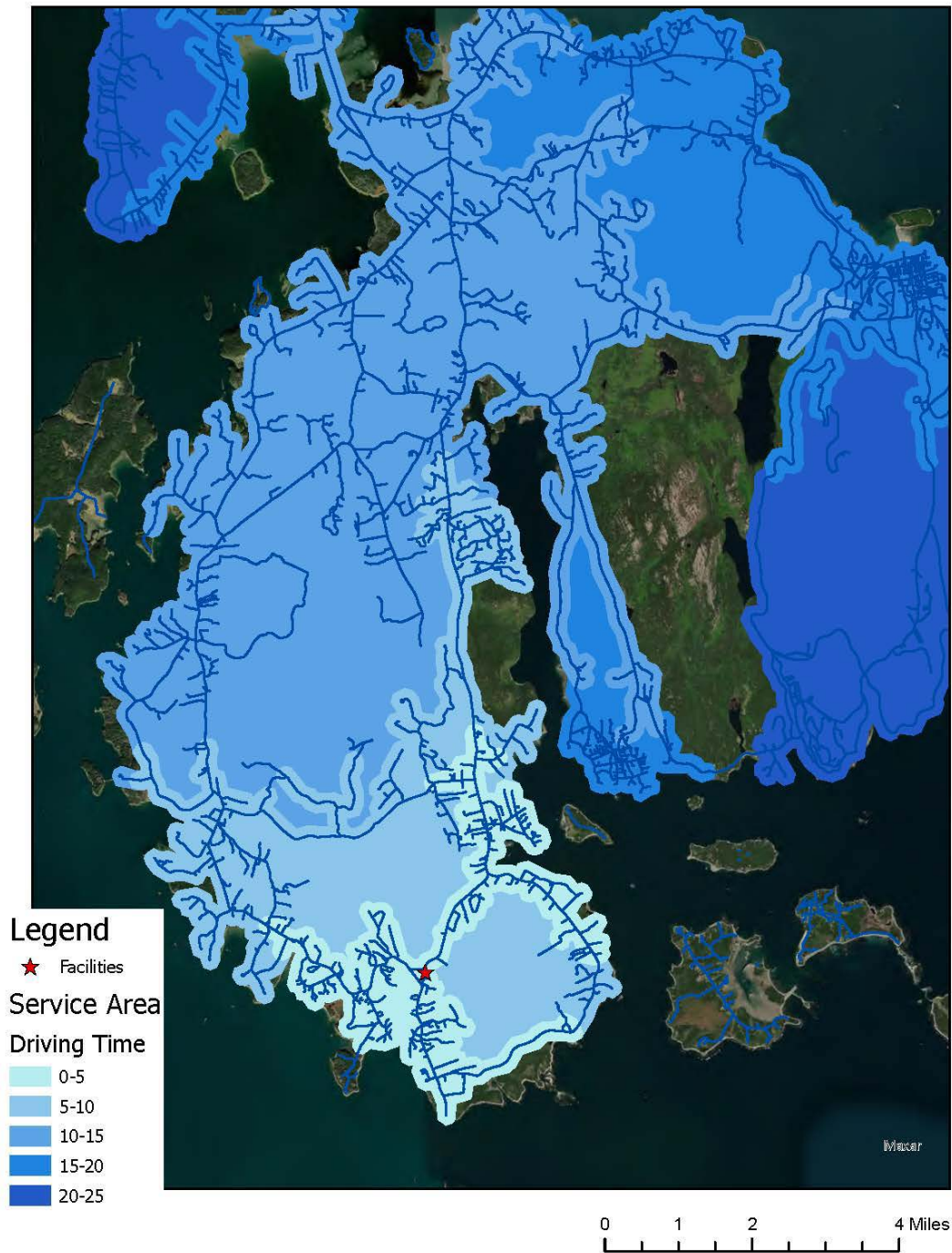
★ Tremont Consolidated School

**Service Area**

**Driving Time**

0-5

## Tremont Town Office Service Area (No Flooding)



## Tremont Healthcare Town Office Service Area (2100 HAT)



### Legend

★ TownOffice

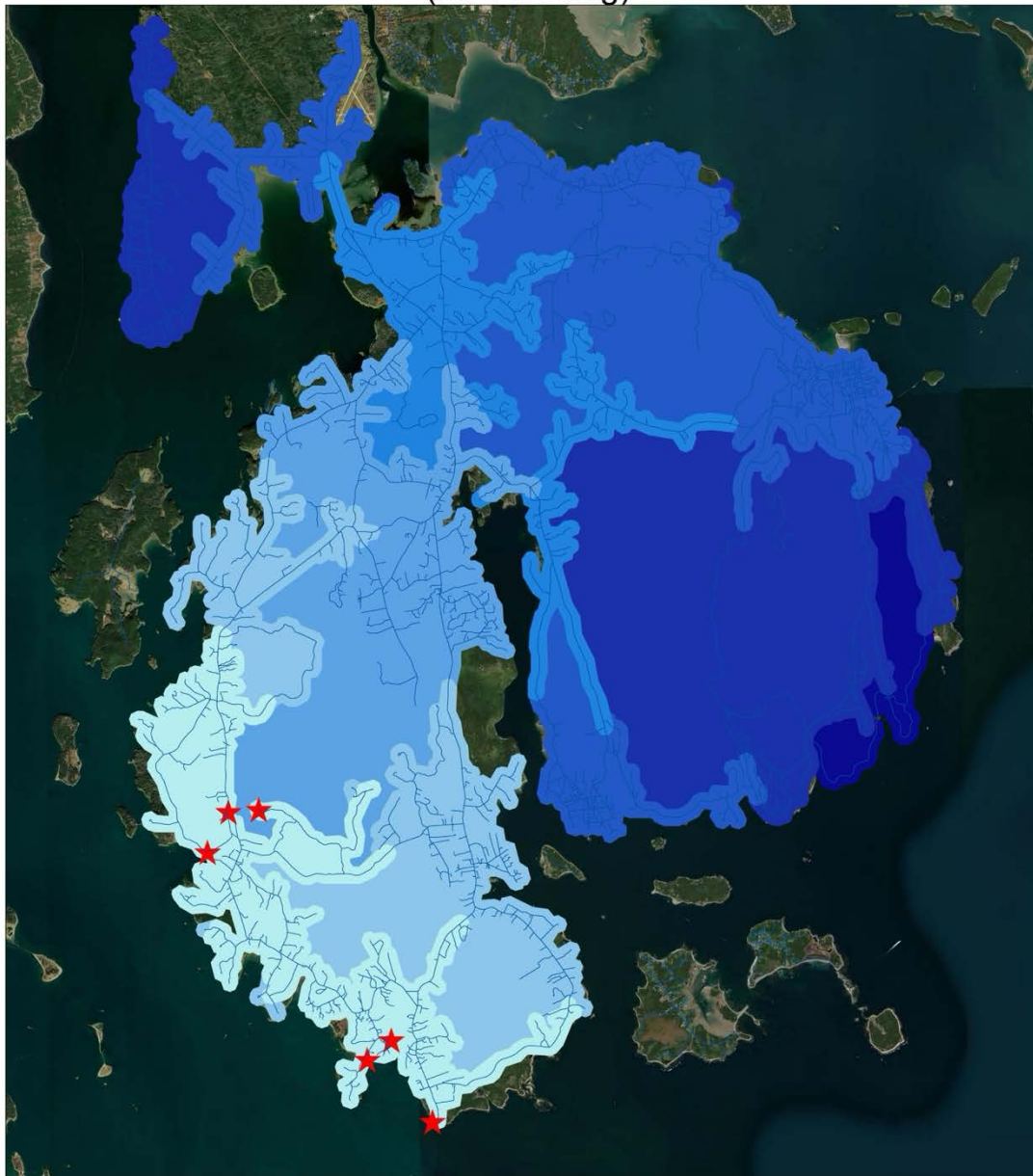
### Service Area

#### Driving Time

0-5

5-10

# Tremont Public Waterfront Access Service Area (No Flooding)



## Legend

★ Waterfront Access

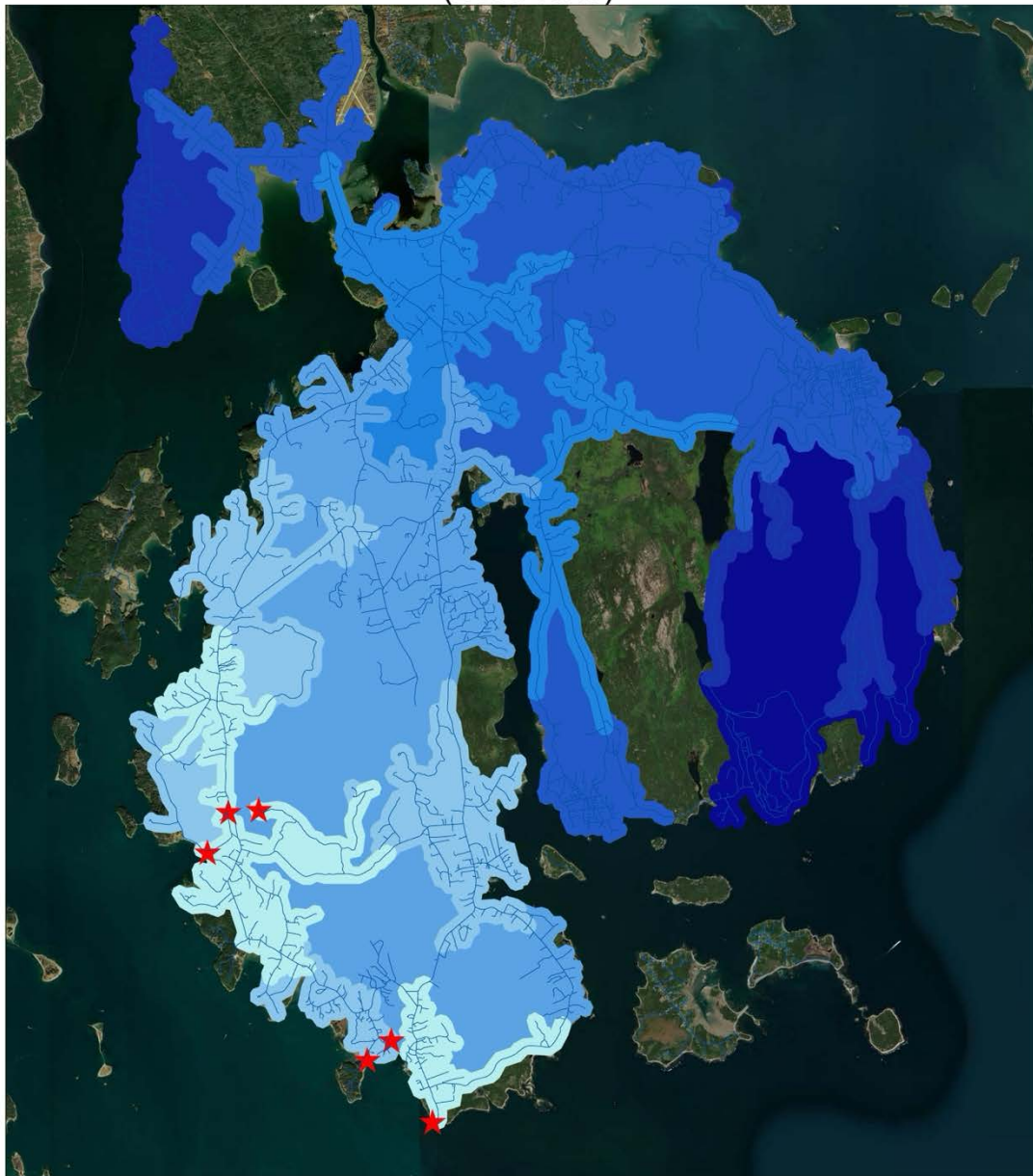
## Service Area

### ToBreak

- 0-5
- 5-10
- 10-15
- 15-20
- 20-25
- 25-30
- 30-35

0 1.5 3 6 Miles

# Tremont Public Waterfront Access Service Area (2100 HAT)



## Legend

★ Waterfront Access

## Service Area

### ToBreak

- 0-5
- 5-10
- 10-15
- 15-20
- 20-25
- 25-30
- 30-35

0 1.5 3 6 Miles