

DECEMBER 2021

KEENESBURG

MEMORIAL PARK MASTER PLAN

CONTENTS

2	The Vision
4	Capturing History
7	Integrating with Nature
8	Master Plan
11	Multipurpose Park & Cemetery
12	Playing with the Terrain
13	Entryway
15	Parade Grounds
16	Cemetery
18	Scatter Garden
20	Park Space
22	Phasing Plan
25	Connectivity Concept

PREPARED FOR:



PREPARED BY:



The Vision

Keenesburg Memorial Park is envisioned as a combined cemetery and park space in the southern portion of the Town. It will be a major draw for residents and visitors alike. The grand views of the open high plains make this a wonderful location for outdoor experiences and a tranquil



area for reflecting. The pond and drainageway add to the site's unique characteristics to create an organic, aesthetic feel to the landscape. The native backdrop adjacent to the community gives the memorial park a world of possibilities.



Capturing History



The Town of Keenesburg was first platted in 1907 and incorporated in July 1919 around the end of World War I. The Town's physical development has formed over many years. Early development was heavily influenced by the Town's agriculture tradition. Keenesburg also served as a trade hub for the surrounding area. The railroad was key

to sending crops and cattle to markets and bringing vital goods from Denver.

The Keenesburg Memorial Park design concept pulls from Keenesburg's history and traditions. The design concept draws upon the traditional western and prairie styles with timber frame structures and split rail fencing.





The concept design capitalizes on the site's expansive, seemingly unending views. The memorial park's orientation promotes sprawling vistas of the Colorado plains to the south. Vertical elements are designed to limit visual intrusion of the panoramic landscape.

The natural drainageway and pond create a sense of relaxation. This local jewel adds to the variation in landform

and texture. The cooling and soothing nature of water not only creates character, it provides for variety in flora and fauna.

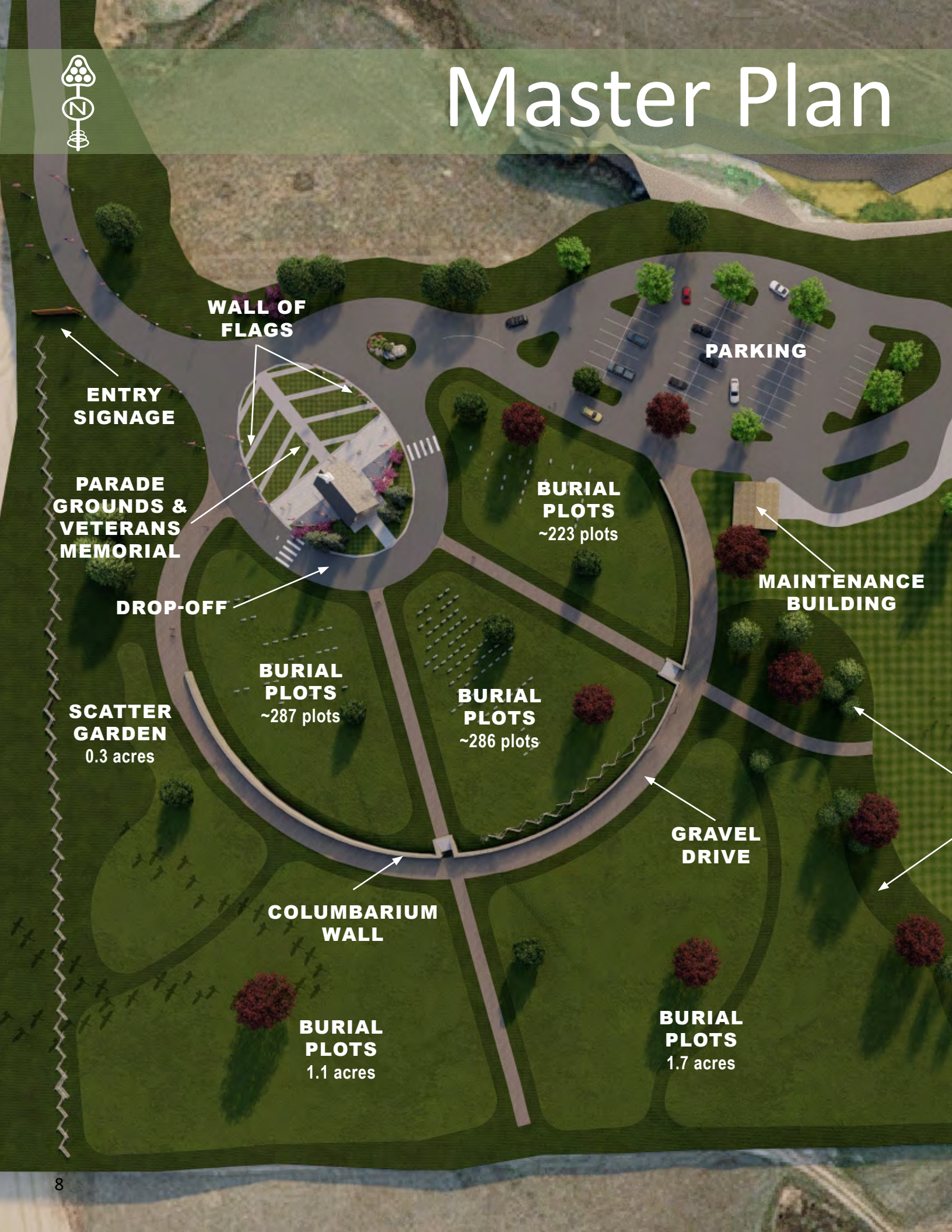
Natural vegetation and plantings commingle with the surroundings. Sparse trees subtly blend with the horizon. The humble essence of the vegetation adds to the ambiance and promotes reflection and introspection.



Integrating with Nature



Master Plan





Keenesburg Memorial Park is a place to gather, pay respects, remember loved ones, take a walk, bike, play, and enjoy nature's beauty.

Visitors enter from the north and are greeted by entry signage, flags, the parade grounds, and expansive views to the south.

The parade grounds is a place for services and memorials. It includes a covered structure, seating for services, and a Veterans Memorial. It is surrounded by a tall wall of flag poles.

Vehicle access for drop-offs is provided around the parade grounds to ensure easy access for people of all ages and abilities. Parking is provided nearby and is shared with the park and pavilion. A gravel drive provides vehicle and pedestrian access to the columbarium wall and plots further from the entry.

Burial plots internal to the gravel drive are higher in elevation with space for approximately 796 plots. A six foot tall retaining wall follows the gravel drive and serves as a columbarium wall for storing remains. There are additional burial plots beyond the gravel drive, with access provided by walking paths and the gravel drive. A peaceful scatter garden is located west of the gravel drive for scattering loved one's ashes.

Park space lies to the east of the cemetery. A slope with tall grasses provides a visual and noise buffer between the open park area and cemetery.

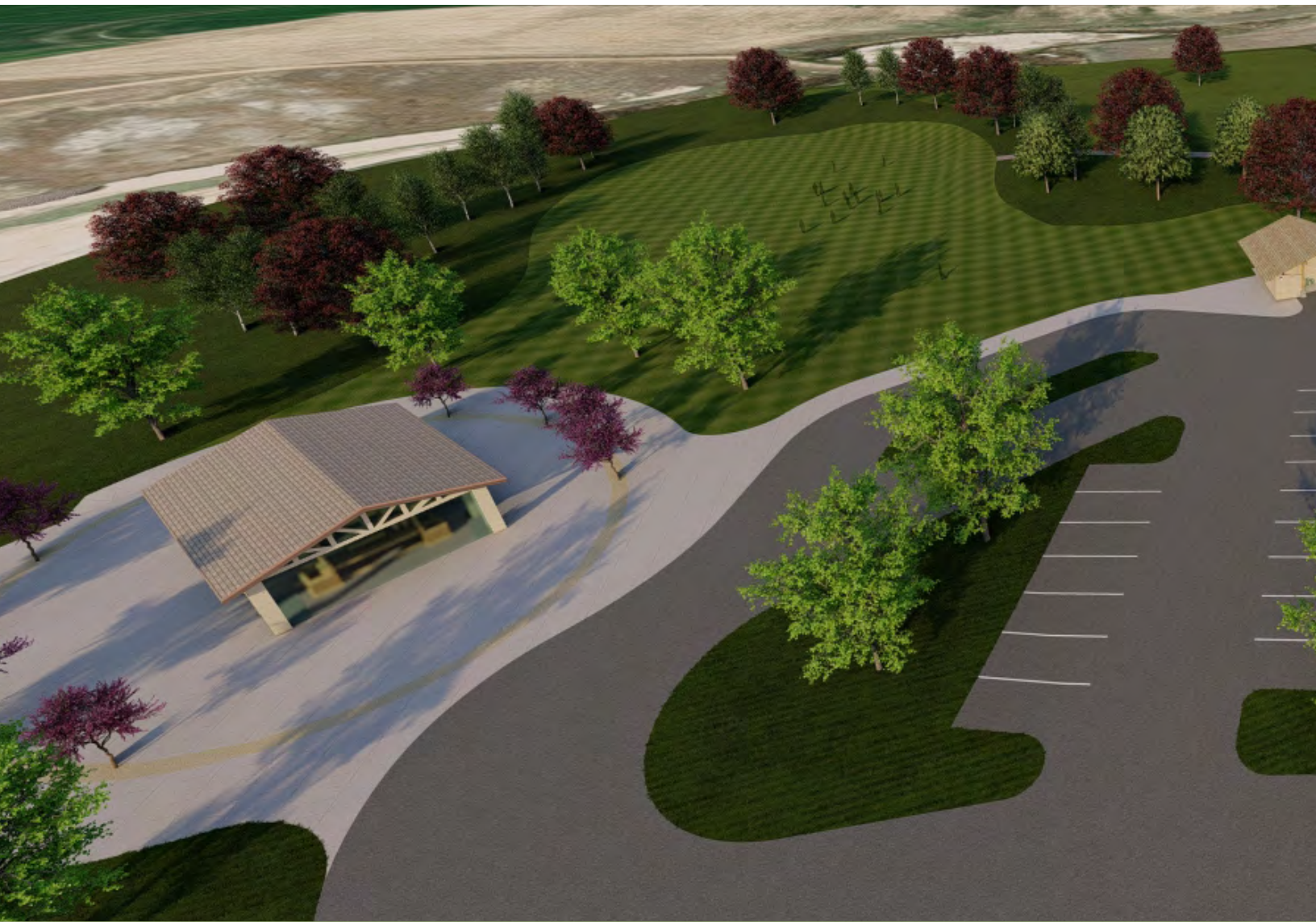
The open park area provides flexible space to recreate and enjoy the park's natural beauty. The open air pavilion overlooking the pond is a shady place to gather with family and friends. A maintenance building is centrally located with easy vehicular access.

- Designed for flexibility -

Keenesburg Memorial Park serves multiple functions. At its essence, it is an outdoor community space where residents and visitors can enjoy nature's beauty. It is a space for the community to gather and recreate outdoors, a place to travel to and a place to travel through. It is a place to remember and reflect, a place to cry, and a place to smile.

The large open park space can host large gatherings,

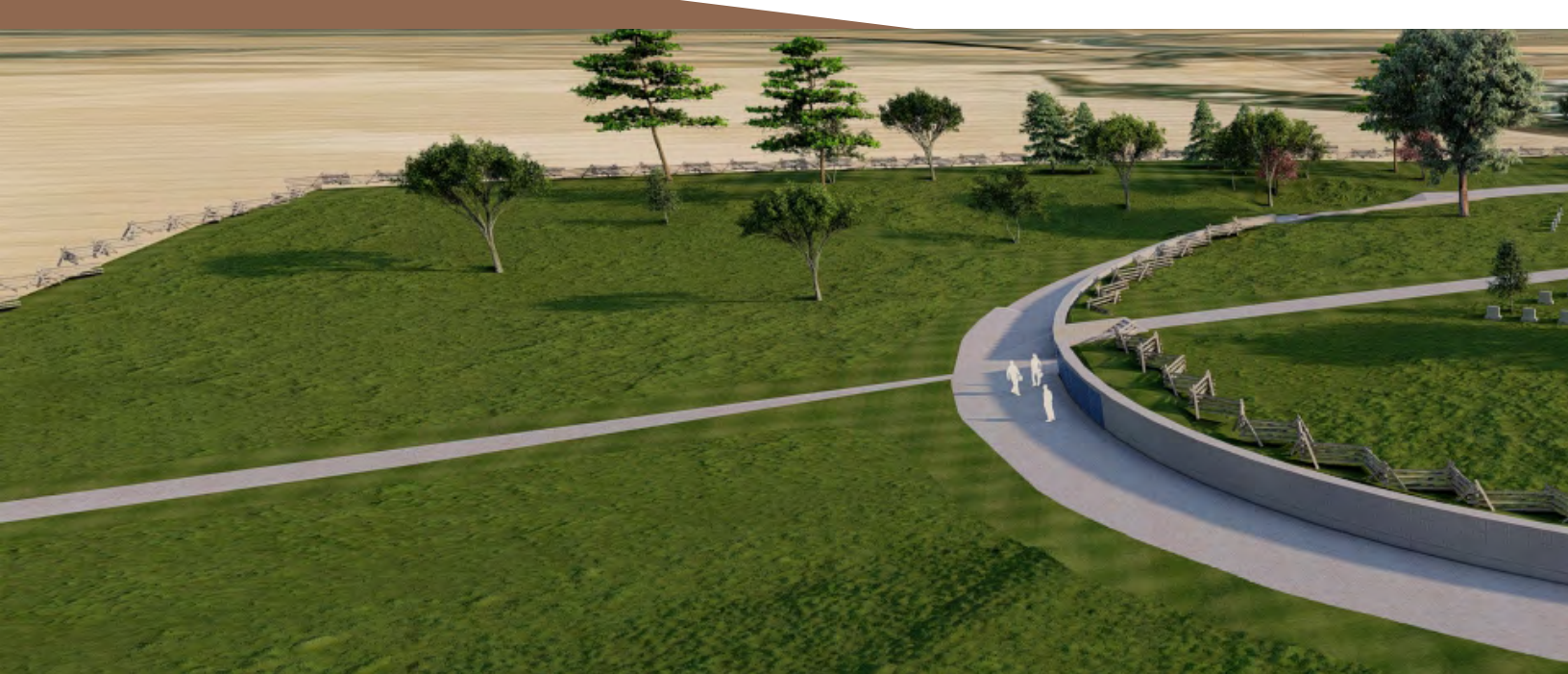
soccer games, kite flying, family picnics, and many more activities. This is a community space that provides for the diversity of needs. It also preserves open space to maintain a natural atmosphere for the cemetery over the long term. The covered pavilion provides refuge from the sun and rain for park visitors. The cemetery provides additional open space for a leisurely stroll.



Multip



Purpose Park & Cemetery



Playing with the Terrain

The natural topography of the site and its surroundings are dominated by gently rolling hills. As you enter the memorial park from the north, the cemetery modestly rises from the landscape. The terrain leads the eye to

a wide open horizon before dropping off to the south behind a six foot retaining wall. The layout preserves southern views of the vast open prairie.

The park open space drops as you move east from the cemetery towards

the pond. This vertical separation, along with tall grass plantings mitigates any conflict between the park and cemetery users. The pavilion structure is placed on the northeast section as to not impede the views to the south.





Keenesburg Memorial Park welcomes visitors from the north. Vehicles, pedestrians, and bicyclists are greeted by a repurposed barn wood entry sign with radiant and lush landscape plantings.

The parade grounds are front and center as you enter the memorial park. The simple yet elegant structure along with the multitude of flags draw the eye south, without

interfering with southern views of the rolling plains. The American flags instill a sense of togetherness, of country and community.

The gentle curve to the east slowly exposes the pavilion and park space. Wetland vegetation along the shoreline adds variety in color and texture.







Parade Grounds

The parade grounds first greet you as you enter Keenesburg Memorial Park. The area is moderately sized with room for one hundred or so visitors. The oval is defined by the wall of flags surrounding visitors as they celebrate the lives of loved ones. The centerpiece is the timber shelter that maintains open views to the south over the cemetery plots. The use of timber reminisces of the Town's history.

Walkways provide accessible routes and create varying textures to the space. They also offer space for temporary seating. Limestone or sandstone seating blocks could also be added, which could also serve as memorial tributes. The wrap-around drive provides easy access, temporary parking, and a route for processions.



Cemetery

The cemetery space has two primary fields; the upper field being separated from the lower field by a split rail fence and retaining wall.

The upper field is the high point of Keenesburg Memorial Park and is divided into three sections by linear walking paths. In total, the upper field has room for approximately 796 burial plots. The lower field drops off from the upper field. This large area consists of 2.8 acres for burial plots. In addition to traditional burial plots,

a shaded scatter garden lies to the west for distribution of cremated remains.

The descent from the upper field is created with a six foot tall columbarium wall. Remains are stored in vaults within the wall that also serves as a retaining wall. The split rail fence adds to the historic feel and provides protection from the retaining wall.

Vehicles and pedestrians can access the columbarium wall and lower

field via a gravel drive that encircles the upper field. The gravel provides texture, gives a more natural feel, and is less expensive than concrete.

Linear walkways divide the cemetery fields and provide easy delineation of fields to locate loved ones. Several sets of stairs provide access to the lower field.

The cemetery is covered with natural vegetation and plantings. Tree plantings provide sporadic shade and sun relief for visitors.







Scatter Garden

Scatter gardens are designated places where the family and friends of the deceased can scatter the cremains of their loved one. The garden serves as their final resting place.

These scatter gardens are beautifully landscaped areas and typically include plants and other vegetation. They offer a tranquil place to remember and reflect with picturesque views and peaceful surroundings.

They generally have a natural feel with no headstones. However, there are opportunities to place memorial plaques, engraved bricks, or similar memorial elements. The Keenesburg Memorial Park Scatter Garden is envisioned to have areas for memorial plaques. The plaques could be included in the seating area or in the place where ashes are spread.





- Scatter Gardens are beautifully landscaped areas for spreading the ashes of loved ones -



Park Space



The expansive open lawn is reflective of the vast rolling hills to the south of the site. The large lawn is an excellent space for a community gathering, family reunion, festival, watching a sunrise, quiet picnic, or playing field sports.

The lawn also benefits the adjacent cemetery serving as additional open space and buffer from future adjacent development.

The pavilion is a central gathering spot for the park. The covered area could be open air or enclosed with glass for 360 degree views of the pond, park, cemetery, and rolling hills beyond. The pavilion could also be rented for BBQs, weddings, or other gatherings.

The ponds increase the allure of the park. Visitors can view waterfowl and wildlife in and around the water.





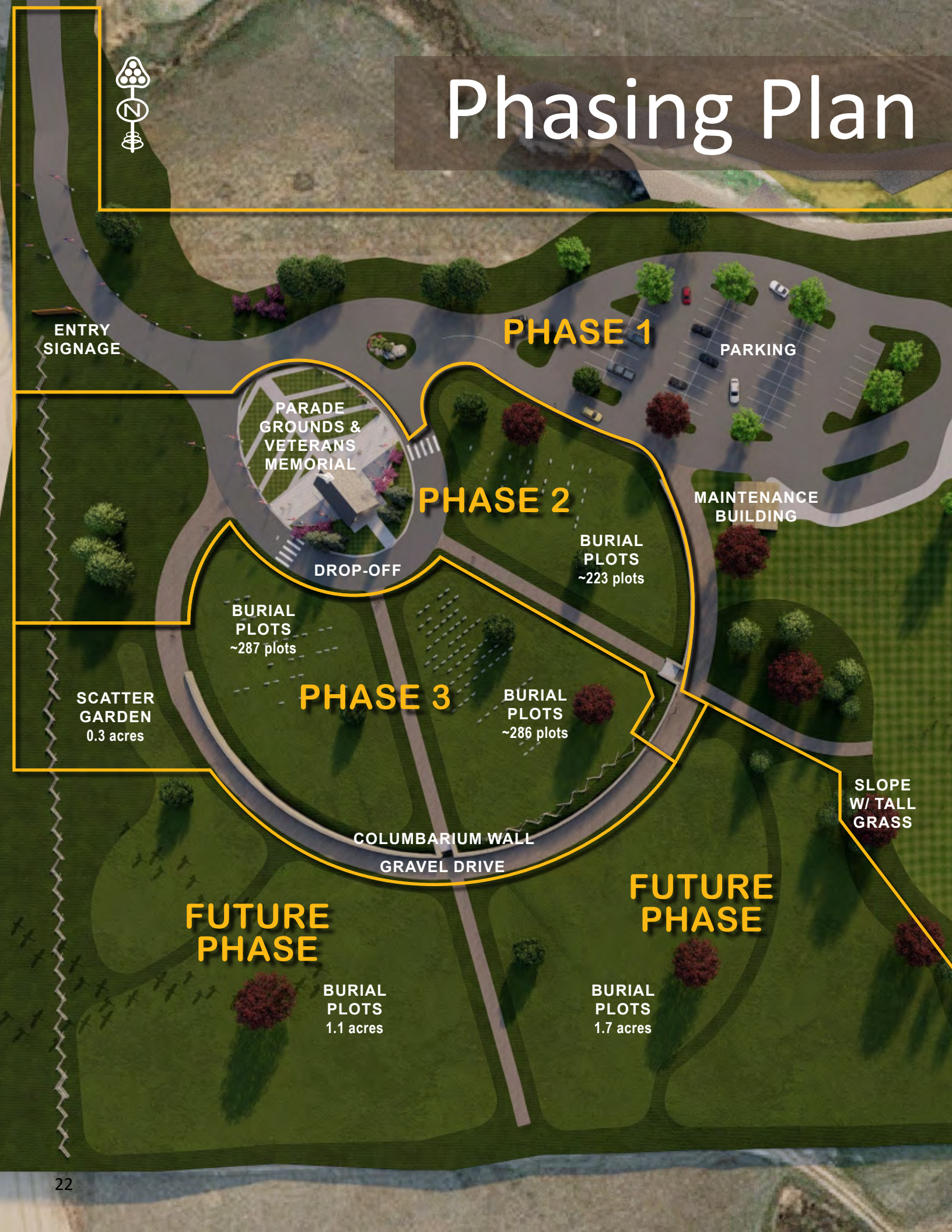
A park maintenance building is tucked away while still being centrally located and easily accessed by vehicle. The attractive yet utilitarian structure is vital for storage of maintenance equipment.

- The open lawn mimics the expansive views to the south where visitors can spread their wings and enjoy the flexible space -





Phasing Plan





The overall improvements have been divided into three individual phases, with additional future phases.

PHASE 1 initiates the development of Keenesburg Memorial Park with a focus on the community park aspects of the space. It includes the vehicular drive from the north, entry signage, parking lot, maintenance building, pavilion, open park area, and walkway to the open park area. Phase 1 includes earthwork for the entire project. The opinion of probable cost for Phase 1 is as follows:

- \$1,070,000 for site work
- \$600,000 to \$1,000,000 for community building
- \$300,000 to \$600,000 for maintenance building / restroom

PHASE 2 moves into the development of the cemetery. It includes parade grounds, veterans memorial, flags, drop-off driveway, one of the three burial plot areas with space for approximately 223 plots, and a walkway. The opinion of probable cost for Phase 2 is as follows:

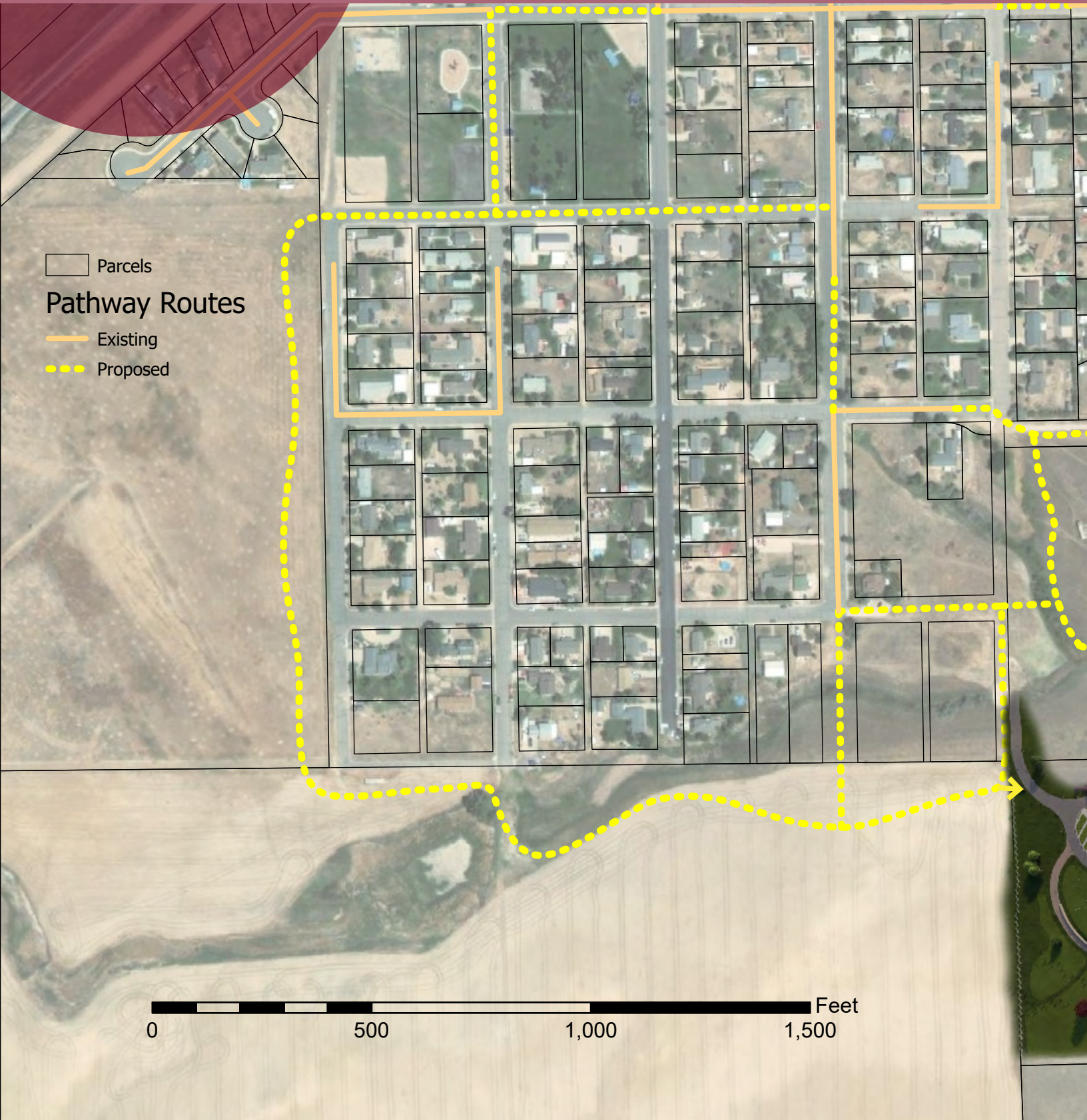
- \$300,000 for site work
- \$500,000 for structure

PHASE 3 continues the development of the cemetery. It includes two burial plot areas, walkways, columbarium wall, split rail fence, scatter garden, and gravel drive, Phase 3 completes the main cemetery area. The opinion of probable cost for Phase 3 is as follows:

- \$250,000 for site work and the retaining wall
- \$100,000 for inclusion of the columbarium wall

Future phases south of the main cemetery include additional area for burial plots and a walkway.

**Permitting is not included in any costs. Electric, sanitary sewer, and water are not included in any costs.*





With convenient access to the adjacent drainageway, trail connectivity will be vital to ensure users have quality bicycle and pedestrian access to Keenesburg Memorial Park.

A future trail network will connect nearby homes and the greater Keenesburg community to the park. Keenesburg Memorial Park could serve as a destination for walking and biking, or a rest stop as bicycles loop around the community.

Connectivity Concept



PREPARED BY: