



## Sustainable Traffic Solutions

Joseph L. Henderson PE, PTOE  
Traffic Engineer / Principal

June 28, 2021

Chadwin F. Cox, PE  
Western Engineering Consultants  
127 South Denver Avenue  
Fort Lupton, CO 80735

RE: Trip Generation Estimate for the Judie Anne Subdivision in Keenesburg

Dear Chad,

This letter contains a trip generation estimate for the Judie Anne Subdivision that is planned on the northeast corner of Woodward Avenue / Johnson Avenue. The development will include 13 single family dwelling units. One of the homes is existing and 12 homes will be new. Figure 1 contains a vicinity map that shows the location of the development. A site plan is contained in Figure 2 that shows the layout of the lots. Access to the lots will be via a new local street that includes a cul-de-sac at the east end of the street.

A trip generation estimate was prepared for the development using rates that are contained in the Institute of Transportation Engineers (ITE) Trip Generation<sup>1</sup> manual. The 12 new dwelling units are expected to generate approximately 114 trips on an average weekday, 9 trips during the morning peak hour, and 11 trips during the evening peak hour. The trip generation estimate is contained in Table 1.

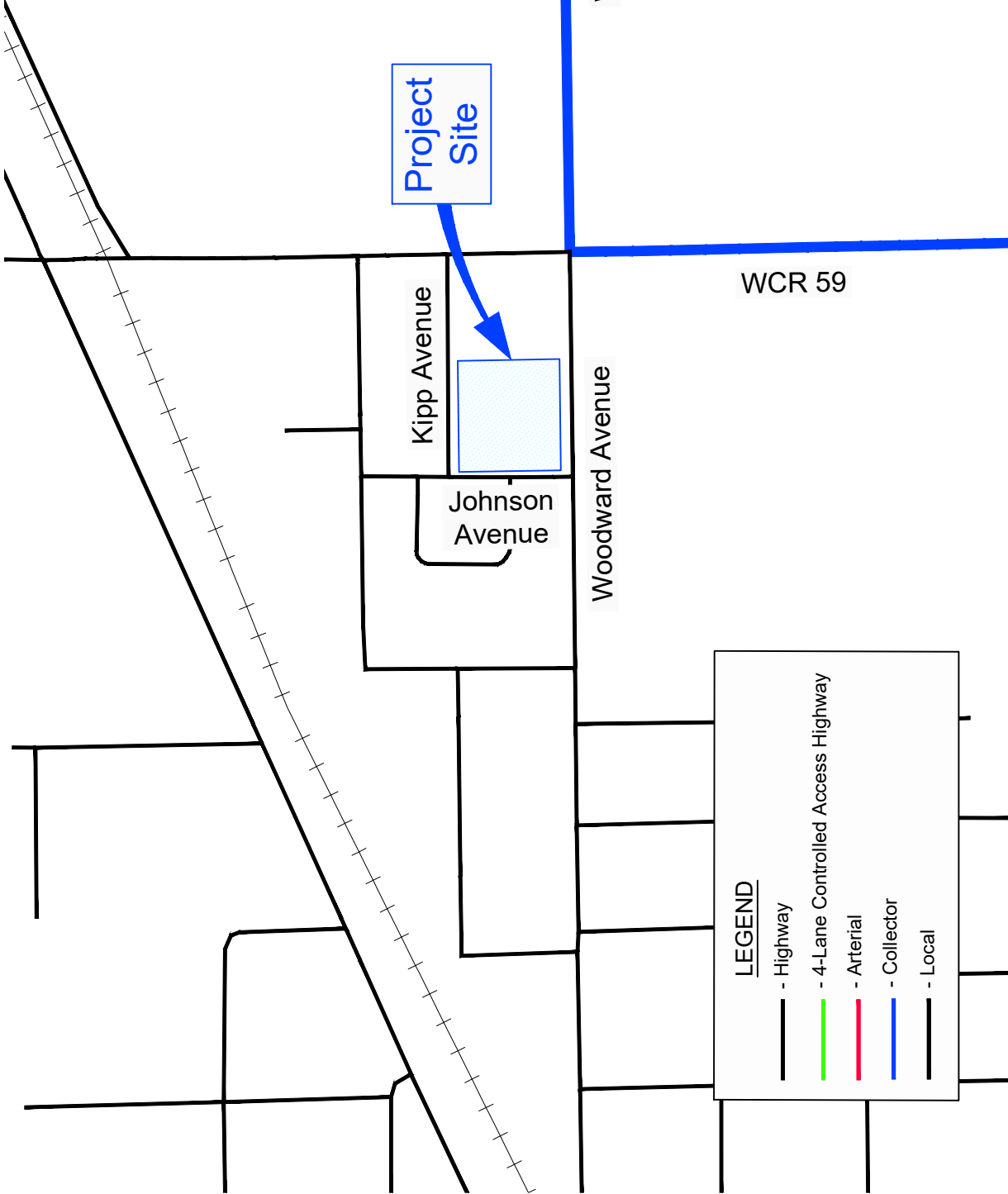
Feel free to contact me to discuss the contents of this report.

Sincerely,

Joseph L. Henderson, PE, PTOE  
Project Manager / Principal  
Judie Anne Trip Generation Letter

---

<sup>1</sup> Trip Generation, 10<sup>th</sup> Edition. Institute of Transportation Engineers. September 2017.



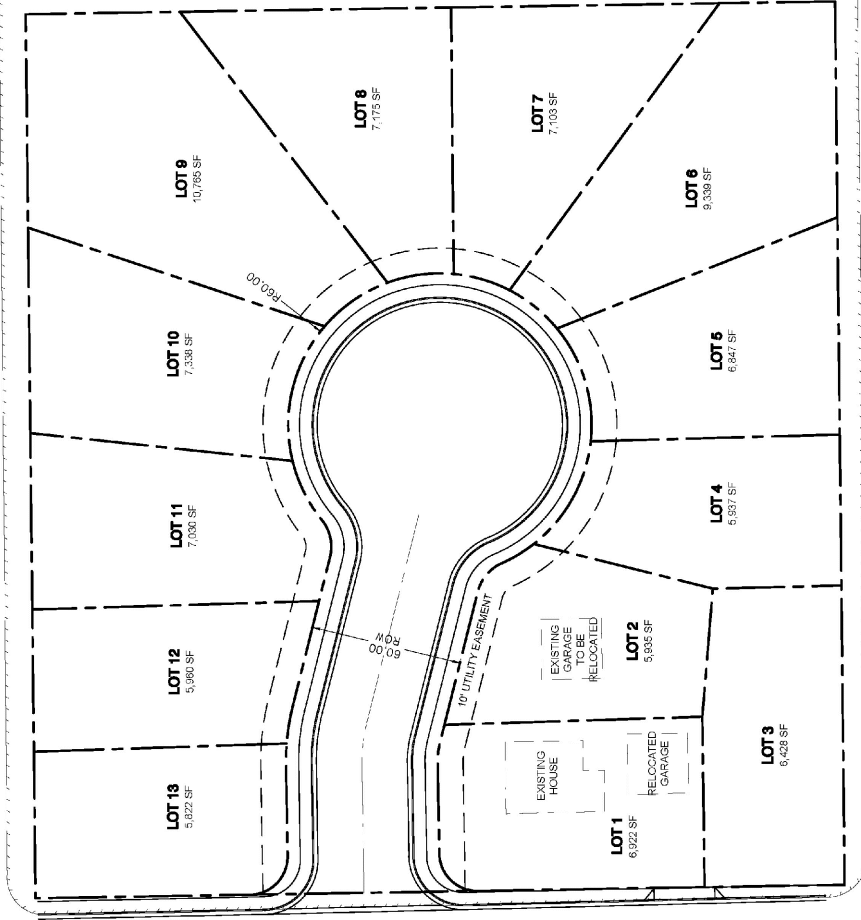
Judie Anne Subdivision Trip Generation Letter  
VICINITY MAP



Scale	1" = 500'	Date	June 28, 2021	Drawn by	JLH	Job #	Western Engineering	Figure	1
-------	-----------	------	---------------	----------	-----	-------	---------------------	--------	---



Kipp Avenue



Johnson Avenue

Johnson Circle

Woodward Avenue



### Judie Anne Subdivision Trip Generation Letter SITE PLAN

Scale	NTS	Date	June 28, 2021	Drawn by	JLH	Job #	Western Engineering	Figure	2
-------	-----	------	---------------	----------	-----	-------	---------------------	--------	---

**Table 1. Trip Generation Estimate**

Land Use <sup>1</sup>	ITE Code <sup>1</sup>	Size	Unit	Average Weekday Trips			Morning Peak Hour Trips			Evening Peak Hour Trips					
				Rate	Total	In	Out	Rate	Total	In	Out	Rate	Total	In	Out
Single Family Detached Housing	210	12	DU	9.44	114	57	57	0.74	9	2	7	0.99	11	7	4

**Notes**

1. The trip generation rates were obtained from Trip Generation (Institute of Transportation Engineers, 2017).