

TO: St James & Peaine Joint Planning Commission

FROM: Barry Hicks, AICP, Community Planner (LIAA)

DATE: 09/20/22

REASON: Goals & Objectives: October 17, 2022, Joint Planning Commission Meeting

The Saint James Township and Peaine Township Joint Planning Commission met on September 19, 2022 to discuss the results from both the Open House and the online survey. The Open House was held at the Beaver Island Community Center on August 17, 2022, from 2-6pm and the online survey was open and available from 08/10 through 09/06. Both asked the same questions and for comments on the same topics so that participants could choose how they wanted to participate in providing public input.

GOALS

Participants chose whether to answer any or all the questions and had the opportunity to provide written comments. After analyzing the responses, the LIAA team identified several top priorities and recommends focusing on the following topics to set goals in the Master Plan:

Cultural & Natural Resources

- Planning efforts and regulations are needed to maintain natural areas (including outer islands)
- Dark Skies
- Protect and respect historical sites (such as the Stone Circle)

Tourism & Economic Development

- Maintain rural environment – this is what attracts people to the island
- Education materials for visitors to protect public lands
- Workforce housing

Accessibility

- EMS services
- Affordable housing – need to update zoning requirements
- Trail management (motorized/non-motorized infrastructure and connectivity)
- Reliable High-Speed internet

Built Environment

- Differentiate and regulate ORV trails and maintain and improve walkable trails
- Speed on roadways
- Year-round indoor pool/gym

Sustainability

- Livability for families
- Develop energy strategy
- Develop an Emergency Management Plan and provide staffing
- Education about shoreline/lake level fluctuations and regulate construction

The survey results are provided as attachments to this memo for your consideration. Between now and the October 17, 2022, Joint Planning Commission meetings, please look over the recommended top priorities listed above and let us know what you think. Below is a worksheet you can use to record your thoughts – feel free to attach additional pages or type your thoughts on a computer and share the file. You can email your thoughts to me at bhicks@liaa.org.

When responding to setting goals, consider the following questions:

Do you agree with the priority lists? Would you edit or change any? Add any? Delete any? Are there more specific topics, ideas, or tasks you think any of the items should be broken-down into?

Cultural & Natural Resources

Tourism & Economic Development

Accessibility

Built Environment

Sustainability

OBJECTIVES

Objectives are specific and measurable ideas for to help implement and achieve the goals. For example:

Affordable Housing

GOAL: Housing that is affordable and accessible to residents and workers.

OBJECTIVE: Establish an Affordable Housing Committee to prepare a housing affordability plan that explores a comprehensive approach to providing housing for all residents and workers.

What objectives would you assign to specific goals under each topic? Please provide your thoughts for measurable objectives – You do not have to provide objectives for all the goals.

Cultural & Natural Resources

Tourism & Economic Development

Accessibility

Built Environment

Sustainability

Attached: 09/19/22 Joint Planning Commission Presentation
 Demographics
 Survey Results – Priorities
 Survey Results – Comments
 2017 Master Plan – Action Plan



Beaver Island Master Plan Update Joint Planning Commission Meeting

Sept. 19, 2022

Barry Hicks
Lee Maynard



Land Information Access Association



Agenda

- Coastal Sustainability Assessment
- Demographics
- Public Input Results
- 2017 and 2022 Comparison
- NEXT: Goals & Objectives

Coastal Sustainability Assessment

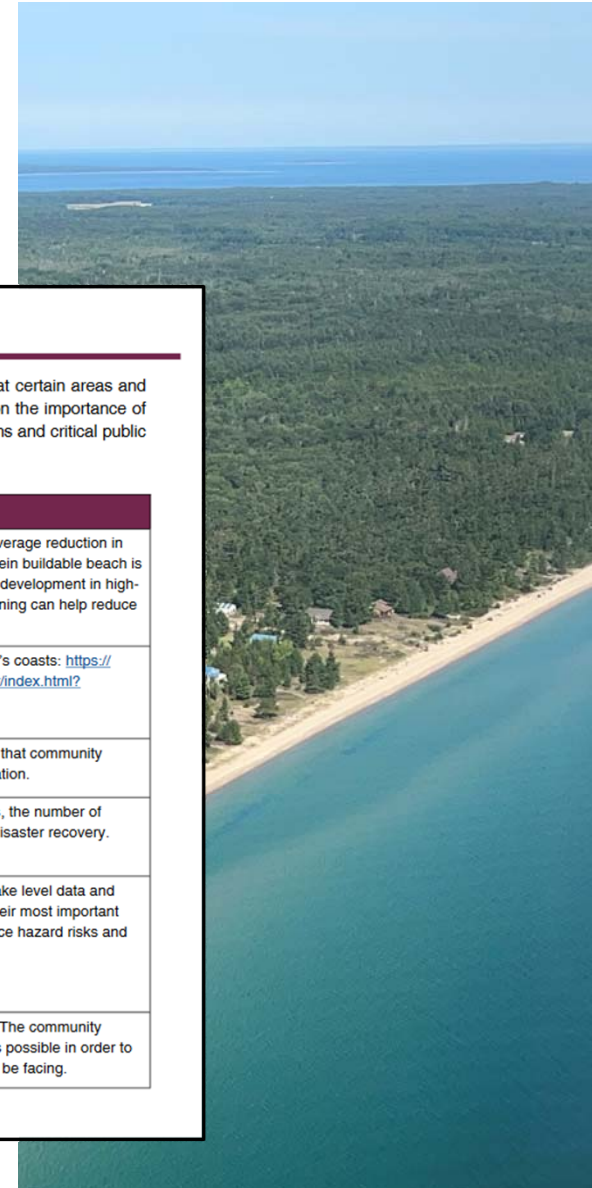
What is a Sustainability Assessment?

Data gathering and mapping

Coastal communities can work towards implementing sustainable policies and best practices once they understand the risks that certain areas and structures are under. Data and mapping that is well-organized and easily presented can help to educate community residents on the importance of planning ahead for potential risks. This is a first step in planning for flood damages to residences, businesses, natural ecosystems and critical public facilities. Planning ahead can help to prevent damages or reduce the negative effects that these damages can cause.

	Benchmark	Self-Assessment	Description
24.1	Does the community use historical mapping of lake levels and lake level projections to inform land use decisions?		The Great Lakes fluctuate in a decadal pattern with an average reduction in shoreline at around 1 foot per year. This fluctuation wherein buildable beach is present for some time and then gone later contributes to development in high-risk areas. Historical data, projections and responsive zoning can help reduce risky development.
24.2	If adjacent to a Great Lake, has the community mapped shoreline erosion using data provide through the Great Lakes Research Center, NOAA and the State of Michigan?		Use the following link to view shoreline data for Michigan's coasts: https://portal1-geo.sabu.mtu.edu/mtuarcgis/apps/webappviewer/index.html?id=d758800bb18e460ab39aa66631051156
24.3	Are flood risk maps and related data updated every five years?		It is important that data on flood risks remain updated so that community planning mitigation efforts are based on accurate information.
24.4	Has the community benchmarked its climate risks and vulnerability to natural disasters so that it can measure improvements over time?		Measurable benchmarks may include: property damages, the number of people and/or structures at risk and public spending on disaster recovery.
24.5	Are maps (or other spatial tools like GIS) used to spatially define the vulnerability of roads, public buildings (schools, hospitals, fire stations, etc.) and public services (wastewater treatment, water distribution, power transmissions, etc.) to coastal hazards?		Using Digital Elevation Models, shoreline erosion data, lake level data and other key sources, communities can assess the risk to their most important assets. Decision makers can use these analyses to reduce hazard risks and improve sustainability.
24.6	Has the extent of past coastal hazards been identified and mapped based on historical records, existing plans and reports or scientific and local knowledge?		Understanding past events can help inform future plans. The community should try to gather information from as many sources as possible in order to create a clearer picture of what risks the community may be facing.

Y—Yes I—Yes, but should improve N—No ?—Don't know NA—Not applicable



Coastal Sustainability Assessment



Zoning regulations: Municipal governments are responsible for protecting public health, safety and natural resources now and for generations to come. Zoning regulations are a useful tool for preserving natural assets and siting developments in low-risk areas. The local government should engage the community to explain the potential risks that natural hazards pose to community assets when development is not regulated. The master planning process is an ideal time for this engagement to occur.

Mapping and data gathering

- Map flood plains and other environmentally sensitive areas

Critical facilities and infrastructure

- Beaver Island Capital Improvement Plan

Disaster preparedness

- 2023 Hazard Mitigation Plan to replace 2016 tri-county Hazard Mitigation Plan

Bluff and ravine protection

- Education and enforcement regarding buffer areas and set-backs

Professional training

- Education by the townships for planning commission members related to planning processes and for engaged community members and residents to further community goals



Demographics



Gender	In Person	Online	Combined	%
Male	28	10	38	24%
Female	37	28	65	40%
Other	0	1	1	1%
No Response			57	35%

Age	In Person	Online	Combined	%
18 or under	1	0	1	1%
19-29	5	3	8	5%
30-39	3	3	6	4%
40-49	4	1	5	3%
50-59	12	9	21	13%
60-69	16	14	30	19%
70 or older	24	10	34	21%
No Response			56	35%

Race	In Person	Online	Combined	%
White	59	32	91	57%
Hispanic	0	0	0	0%
African American	0	1	1	1%
American Indian	2	3	5	3%
Asian	2	0	2	1%
Hawaiian or Pacific Islander	0	0	0	0%
Other or multi-racial	2	0	2	1%
No Response			60	37%

Residency	In Person	Online	Combined	%
Yes > 50%	38	28	66	41%
Yes < 50%	15	8	23	14%
No	11	5	16	10%
No Response			56	35%

Ownership	In Person	Online	Combined	%
Rent	5	2	7	4%
Own	48	35	83	52%
Other	7	0	7	4%
No Response			64	40%

Employment	In Person	Online	Combined	%
Yes	27	20	47	29%
No	36	14	50	31%
No Response			64	40%

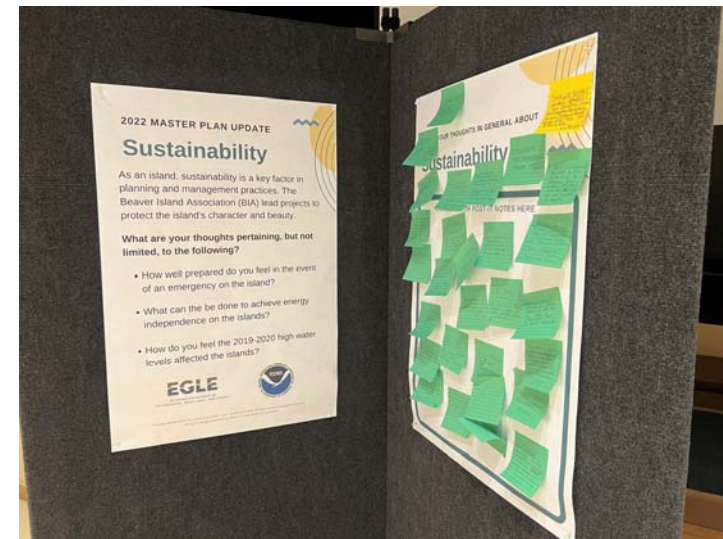
Income	In Person	Online	Combined	%
Less than \$24,999	10	2	12	7%
\$25,000-\$34,999	4	5	9	6%
\$35,000-49,999	5	2	7	4%
\$50,000-\$74,999	6	6	12	7%
\$75,000-\$99,999	5	7	12	7%
\$100,000-149,999	11	4	15	9%
\$150,000-199,999	6	2	8	5%
\$200,000 or more	9	3	12	7%
No Response			74	46%



Recurring Themes

701 comments
shared by
161 participants

- Natural & Cultural Resources Conservation 31%
- Affordable housing 23%
- Broadband internet 17%
- Energy Independence / Alternative energy 17%
 - Solar 7%
 - Wind 5%
- Trails: 16%
 - ATV management 9%
 - Non-motorized infrastructure 5%
- Dark Sky 8%
- Healthcare 8%
- Fire Hazard 7%
- Outer Islands 6%



Action Plan Survey

Methodology

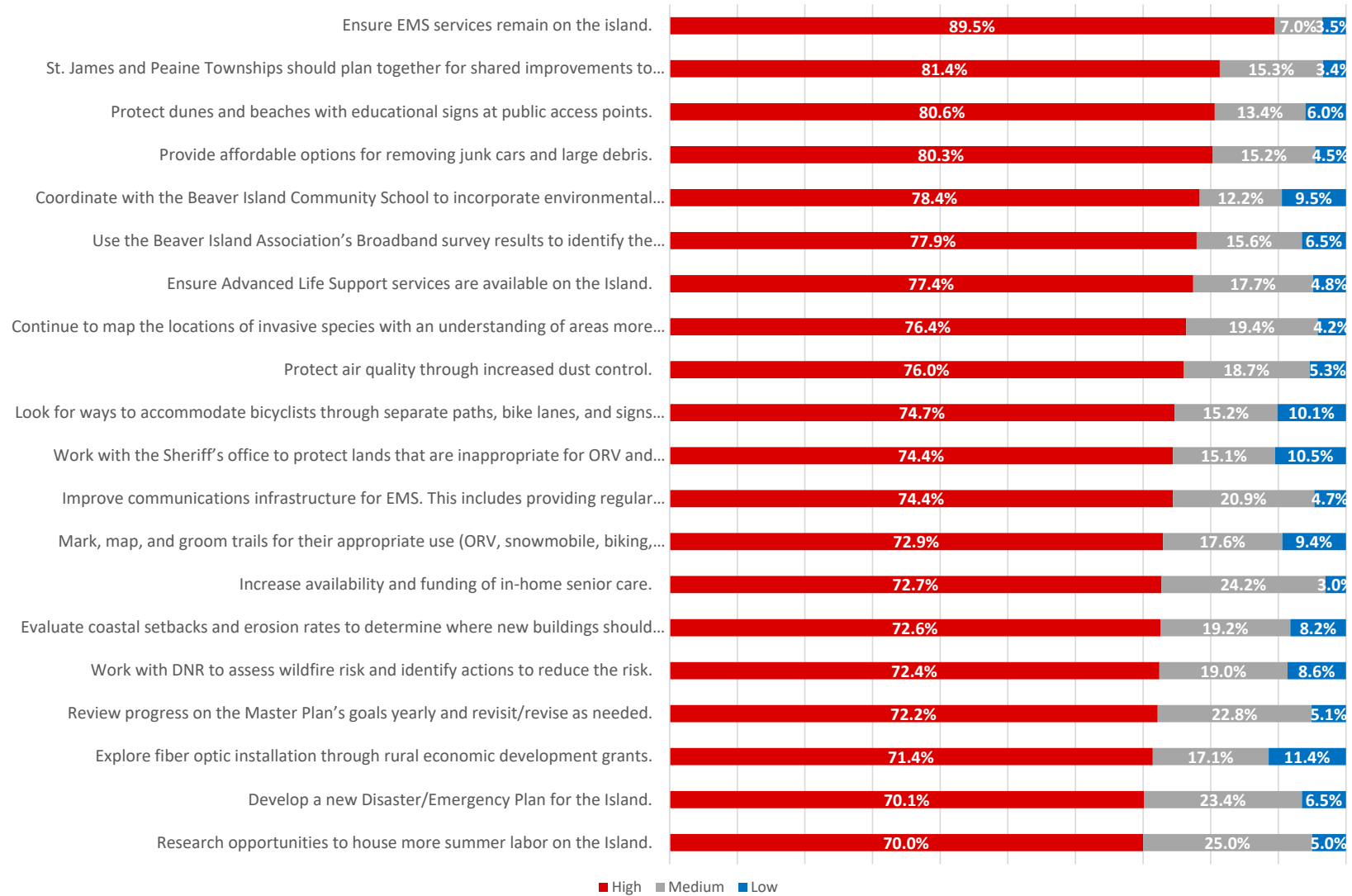
- Included 136 Action Plan items from 2017 Beaver Island Master Plan
- Open House & Online
- Highest number of votes any one Action Plan item received: 118
- Not all items received an equal number of total votes
- Weighted results

more votes = better data



Top 20 Priorities

2022 Beaver Island Master Plan Update Survey Results - Top Priorities



Action Plan Survey Summary

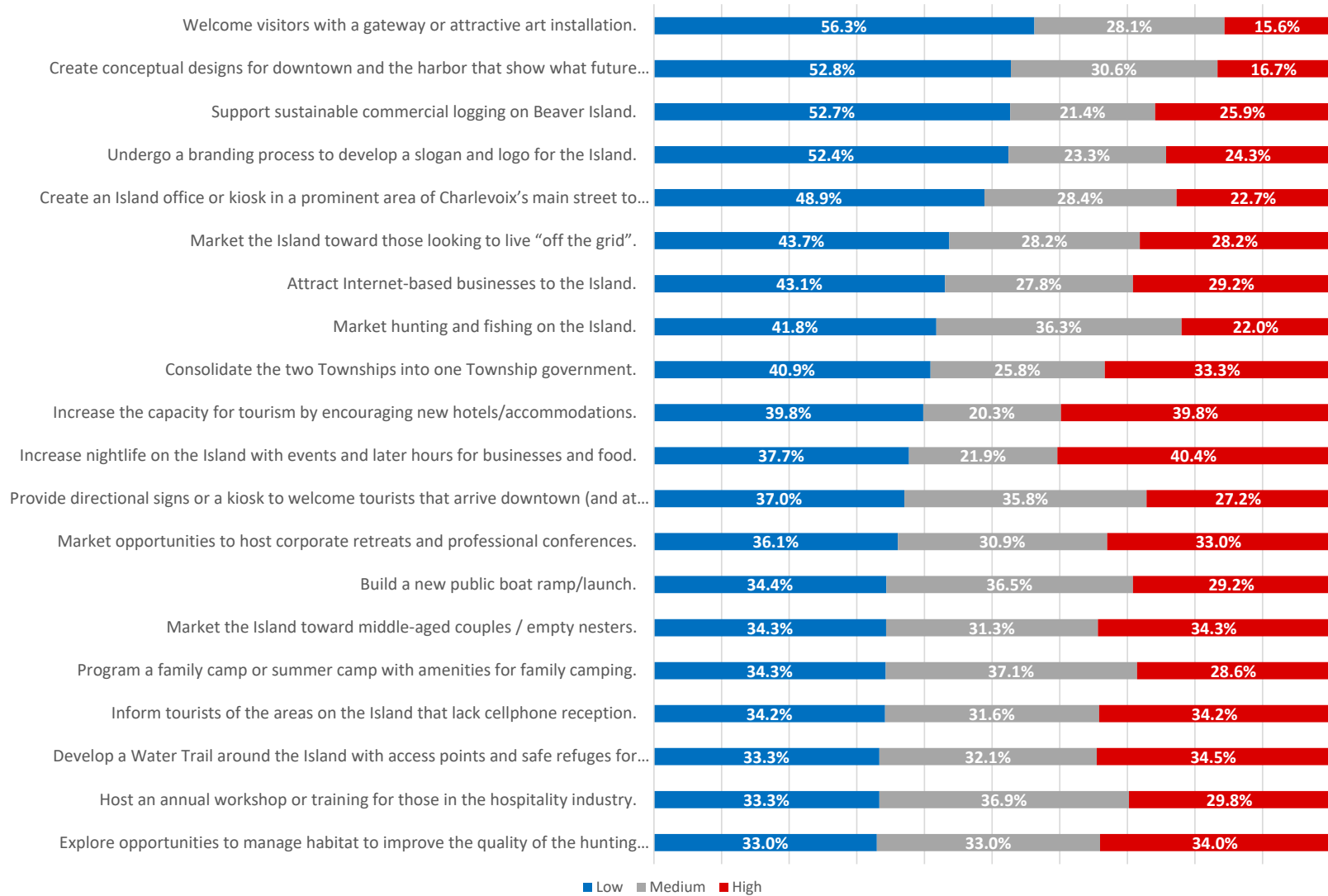
Overall High Priorities

1. Ensure EMS services remain on the island.
2. St. James and Peaine Townships should plan together for shared improvements to infrastructure.
3. Protect dunes and beaches with educational signs at public access points.
4. Provide affordable options for removing junk cars and large debris.
5. Coordinate with the Beaver Island Community School to incorporate environmental education.
6. Use the Beaver Island Association's Broadband survey results to identify the community's needs and prioritize funding.
7. Ensure Advanced Life Support services are available on the Island.
8. Continue to map the locations of invasive species with an understanding of areas more at risk to future infestation.
9. Protect air quality through increased dust control.
10. Look for ways to accommodate bicyclists through separate paths, bike lanes, and signs where appropriate.
11. Work with the Sheriff's office to protect lands that are inappropriate for ORV and snowmobile use.
12. Improve communications infrastructure for EMS. This includes providing regular community updates and infield access.
13. Mark, map, and groom trails for their appropriate use (ORV, snowmobile, biking, walking, etc.).
14. Increase availability and funding of in-home senior care.
15. Evaluate coastal setbacks and erosion rates to determine where new buildings should be set farther back from the water.
16. Work with DNR to assess wildfire risk and identify actions to reduce the risk.
17. Review progress on the Master Plan's goals yearly and revisit/revise as needed.
18. Explore fiber optic installation through rural economic development grants.
19. Develop a new Disaster/Emergency Plan for the Island.
20. Research opportunities to house more summer labor on the Island.



Bottom 20 Priorities

2022 Beaver Island Master Plan Update Survey Results - Bottom 20 Priorities



Action Plan Survey Summary

Overall Low Priorities

1. Welcome visitors with a gateway or attractive art installation.
2. Create conceptual designs for downtown and the harbor that show what future improvements might look like.
3. Support sustainable commercial logging on Beaver Island.
4. Undergo a branding process to develop a slogan and logo for the Island.
5. Create an Island office or kiosk in a prominent area of Charlevoix's main street to better promote Beaver Island.
6. Market the Island toward those looking to live "off the grid".
7. Attract Internet-based businesses to the Island.
8. Market hunting and fishing on the Island.
9. Consolidate the two Townships into one Township government.
10. Increase the capacity for tourism by encouraging new hotels/accommodations.
11. Increase nightlife on the Island with events and later hours for businesses and food.
12. Provide directional signs or a kiosk to welcome tourists that arrive downtown (and at various beaches and throughout the Island)
13. Market opportunities to host corporate retreats and professional conferences.
14. Build a new public boat ramp/launch.
15. Market the Island toward middle-aged couples / empty nesters.
16. Program a family camp or summer camp with amenities for family camping.
17. Inform tourists of the areas on the Island that lack cellphone reception.
18. Develop a Water Trail around the Island with access points and safe refuges for kayakers and paddlers.
19. Host an annual workshop or training for those in the hospitality industry.
20. Explore opportunities to manage habitat to improve the quality of the hunting experience.



2017 Master Plan

2017 Top Priorities

- Build a new public boat ramp and a new fishing pier
- Directional signs
- Fund a seasonal position to maintain trails
- Provide affordable options for removing junk cars and large debris
- Enforce dark-sky protections to protect nocturnal habitat
- Require that new developments protect native species, wildlife, and sensitive landscapes
- Lower the minimum building size through zoning to allow tiny homes
- Allow and incentivize small-scale wind and solar on private property
- Ensure Advanced Life Support and Emergency Medical Services are available
- The two Townships should plan together for improvements to infrastructure with a Joint Capital Improvement Plan
- Consolidate the two Townships into one township government.



2017 Master Plan

2017 Top Priorities

- ~~Build a new public boat ramp and a new fishing pier~~
- ~~Directional signs~~
- **Fund a seasonal position to maintain trails**
- **Provide affordable options for removing junk cars and large debris**
- **Enforce dark-sky protections to protect nocturnal habitat**
- **Require that new developments protect native species, wildlife, and sensitive landscapes**
- Lower the minimum building size through zoning to allow tiny homes
- Allow and incentivize small-scale wind and solar on private property
- **Ensure Advanced Life Support and Emergency Medical Services are available**
- **The two Townships should plan together for improvements to infrastructure with a Joint Capital Improvement Plan**
- **Consolidate the two Townships into one township government.**



2022 Master Plan

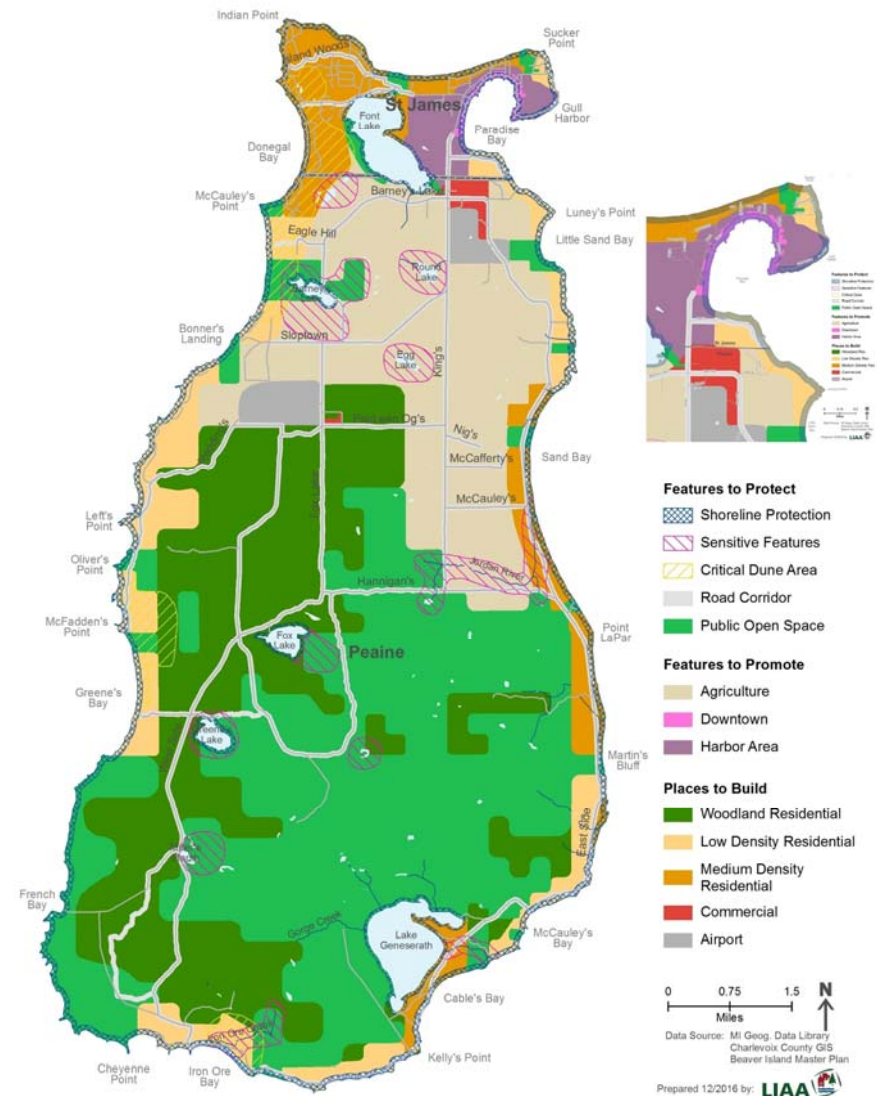
2022 Top Priorities

- Ensure Advanced Life Support and Emergency Medical Services are available
- Both townships should continue to work together to conduct CIP and consider other efforts to increase efficiency
- Improve trail maintenance and conduct planning activities with an emphasis on appropriate activities in appropriate locations
- Provide affordable options for removing junk cars and large debris
- Enforce dark-sky protections to protect nocturnal habitat
- Require that new developments protect native species, wildlife, and sensitive landscapes (such as investigating dune erosion and migration rates to determine appropriate setbacks)
- Establish an Affordable Housing Committee to investigate options for various types of housing and programming
- Allow and incentivize small-scale wind and solar on private property
- Improve internet access
- Environmental education programming in local schools
- Develop an Emergency Mitigation Plan



Land Use

- Keep the Natural/Wooded areas
- Protect critical dune areas from development and high-traffic
- Keep lakes undeveloped
- Worker housing should be close to town
- Affordable Housing should be near the harbor for access to services and transportation
- Green energy could be located near parks or implemented on a smaller scale on individual lots
- “Cultural areas” should be identified and development should be prohibited to protect the areas



2022 Master Plan

Cultural and Natural Resources

- Planning efforts and regulations are needed to maintain natural areas (including outer islands)
- Dark Skies
- Protect and respect historical sites (such as the Stone Circle)

Tourism and Economic Development

- Maintain rural environment – this is what attracts people to the island
- Education materials for visitors to protect public lands
- Workforce housing

Accessibility

- EMS services
- Affordable housing – need to update zoning requirements
- Trail management (motorized/non-motorized infrastructure and connectivity)
- Reliable High-Speed internet



2022 Master Plan

Built Environment

- Differentiate and regulate ORV trails and maintain and improve walkable trails
- Speed on roadways
- Year-round indoor pool/gym

Sustainability

- Livability for families
- Develop energy strategy
- Develop an Emergency Management Plan and provide staffing
- Education about shoreline/lake level fluctuations and regulate construction



Next Steps

Goals & Objectives

- Planning Commissions review Open-House/Online survey data and comments
- Prepare to discuss priorities/goals & objectives at October 17th joint planning commission meeting
- Agreement on top Goals (what?) – thoughts for objectives (how?)

Refine Plan (Draft)

- What else is missing from the current Master Plan?
- LIAA will incorporate data from open-house and update “Action Items” with new goals and objectives based on top-priorities from joint planning commission
- Provide draft of the revised plan to the planning commissioners for consideration/comment



Gender	In Person	Online	Combined	%
Male	28	10	38	24%
Female	37	28	65	40%
Other	0	1	1	1%
No Response			57	35%
Age	In Person	Online	Combined	%
18 or under	1	0	1	1%
19-29	5	3	8	5%
30-39	3	3	6	4%
40-49	4	1	5	3%
50-59	12	9	21	13%
60-69	16	14	30	19%
70 or older	24	10	34	21%
No Response			56	35%
Race	In Person	Online	Combined	%
White	59	32	91	57%
Hispanic	0	0	0	0%
African American	0	1	1	1%
American Indian	2	3	5	3%
Asian	2	0	2	1%
Native or Hawaiian or Pacific Islander	0	0	0	0%
Other or multi-racial _____	2	0	2	1%
No Response			60	37%
Residency	In Person	Online	Combined	%
Yes > 50%	38	28	66	41%
Yes < 50%	15	8	23	14%
No	11	5	16	10%
No Response			56	35%
Ownership	In Person	Online	Combined	%
Rent	5	2	7	4%
Own	48	35	83	52%
Other	7	0	7	4%
No Response			64	40%
Employment	In Person	Online	Combined	%
Yes	27	20	47	29%
No	36	14	50	31%
No Response			64	40%
Income	In Person	Online	Combined	%
Less than \$24,999	10	2	12	7%
\$25,000-\$34,999	4	5	9	6%
\$35,000-49,999	5	2	7	4%
\$50,000-\$74,999	6	6	12	7%
\$75,000-\$99,999	5	7	12	7%
\$100,000-149,999	11	4	15	9%
\$150,000-199,999	6	2	8	5%
\$200,000 or more	9	3	12	7%
No Response			74	46%

		Level of Priority:						
		High		Medium		Low		
ID #	Priority Description	# of votes	% of votes	# of votes	% of votes	# of votes	% of votes	Total # of Responses
A1	Improve the boat docks to be more flexible to changes in water levels.	37	38.54%	29	30.21%	30	31.25%	96
A2	Build a new public boat ramp/launch.	28	29.17%	35	36.46%	33	34.38%	96
A3	Welcome visitors with a gateway or attractive art installation.	15	15.63%	27	28.13%	54	56.25%	96
A4	Make the Harbor area even more "charming" with holiday street lights, landscaping, and beautification projects.	23	25.27%	41	45.05%	27	29.67%	91
A5	Update the downtown public restrooms.	23	26.74%	37	43.02%	26	30.23%	86
A6	Build a new fishing pier.	23	29.87%	33	42.86%	21	27.27%	77
A7	Designate areas for public parking for boaters.	21	25.00%	37	44.05%	26	30.95%	84
A8	Clearly mark, with signs, the waterfront areas for public use and boat launching.	28	39.44%	29	40.85%	14	19.72%	71
A9	Create conceptual designs for downtown and the harbor that show what future improvements might look like.	12	16.67%	22	30.56%	38	52.78%	72
A10	Provide directional signs or a kiosk to welcome tourists that arrive downtown and at various beaches and throughout the Island) Provide directional signs or a kiosk to welcome tourists.	22	27.16%	29	35.80%	30	37.04%	81

		Level of Priority:						
		High		Medium		Low		
ID #	Priority Description	# of votes	% of votes	# of votes	% of votes	# of votes	% of votes	Total # of Responses
B1	Undergo a branding process to develop a slogan and logo for the Island.	25	24.27%	24	23.30%	54	52.43%	103
B2	Comprehensively market the Island’s year-round opportunities.	34	40.00%	28	32.94%	23	27.06%	85
B3	Market hunting and fishing on the Island.	20	21.98%	33	36.26%	38	41.76%	91
B4	Market the Island toward those looking to live “off the grid”.	29	28.16%	29	28.16%	45	43.69%	103
B5	Market the Island toward middle-aged couples / empty nesters.	34	34.34%	31	31.31%	34	34.34%	99
B6	Market the Island toward outdoor sports enthusiasts.	24	29.63%	34	41.98%	23	28.40%	81
B7	Market the Island to professionals who could work remotely via the internet.	32	39.51%	24	29.63%	25	30.86%	81
B8	Market opportunities to host corporate retreats and professional conferences.	32	32.99%	30	30.93%	35	36.08%	97
B9	Create an Island office or kiosk in a prominent area of Charlevoix’s main street to better promote Beaver Island.	20	22.73%	25	28.41%	43	48.86%	88
B10	Promote Beaver Island as a great place for families to live.	52	57.14%	22	24.18%	17	18.68%	91

		Level of Priority:						
		High		Medium		Low		
ID #	Priority Description	# of votes	% of votes	# of votes	% of votes	# of votes	% of votes	Total # of Responses
C1	Construct showers and improve restrooms at the Township campgrounds.	37	45.68%	19	23.46%	25	30.86%	81
C2	Develop a Water Trail around the Island with access points and safe refuges for kayakers and paddlers.	29	34.52%	27	32.14%	28	33.33%	84
C3	Support the expansion of the Beaver Island Birding Trail, especially in the shoulder seasons of spring and winter.	50	48.08%	30	28.85%	24	23.08%	104
C4	Construct docks on the inland lakes.	37	38.14%	36	37.11%	24	24.74%	97
C5	Increase access to and quality of fishing.	27	32.93%	42	51.22%	13	15.85%	82
C6	Increase the capacity for tourism by encouraging new hotels/accommodations.	47	39.83%	24	20.34%	47	39.83%	118
C7	Focus on improving tourism experiences in the "shoulder" seasons of fall and spring.	34	46.58%	23	31.51%	16	21.92%	73
C8	Assess the quality of visitor experiences through surveys conducted on the boats, planes, and at the Community Center.	33	36.67%	31	34.44%	26	28.89%	90
C9	Increase nightlife on the Island with events and later hours for businesses and food.	46	40.35%	25	21.93%	43	37.72%	114
C10	Provide rental options for winter sporting equipment.	29	33.72%	32	37.21%	25	29.07%	86

		Level of Priority:						
		High		Medium		Low		
ID #	Priority Description	# of votes	% of votes	# of votes	% of votes	# of votes	% of votes	Total # of Responses
C11	Create winter festivals and events.	35	37.23%	39	41.49%	20	21.28%	94
C12	Create more universally accessible areas for recreation at beaches, the marina, campgrounds, and in park areas.	22	32.35%	31	45.59%	15	22.06%	68
C13	Support sustainable commercial logging on Beaver Island.	29	25.89%	24	21.43%	59	52.68%	112
C14	Grow and export products such as juniper berries and hops.	30	32.61%	40	43.48%	22	23.91%	92
C15	Market and sell agricultural products with a special “Beaver Island” brand.	22	25.29%	45	51.72%	20	22.99%	87
C16	Regenerate cranberry bogs on the Island for foraging or agricultural growth.	49	46.67%	39	37.14%	17	16.19%	105
C17	Explore opportunities to manage habitat to improve the quality of the hunting experience.	32	34.04%	31	32.98%	31	32.98%	94
C18	Program a family camp or summer camp with amenities for family camping.	20	28.57%	26	37.14%	24	34.29%	70
C19	Allow downed or dead wood to be removed for use at homes or campsites.	50	50.00%	33	33.00%	17	17.00%	100
D1	Fund a seasonal position to maintain trails.	52	62.65%	19	22.89%	12	14.46%	83

		Level of Priority:						
		High		Medium		Low		
ID #	Priority Description	# of votes	% of votes	# of votes	% of votes	# of votes	% of votes	Total # of Responses
D2	Support land acquisition by the DNR and others to connect existing trails.	33	54.10%	18	29.51%	10	16.39%	61
D3	Mark, map, and groom trails for their appropriate use (ORV, snowmobile, biking, walking, etc.).	62	72.94%	15	17.65%	8	9.41%	85
D4	Clearly mark the seasonal conditions of trails on maps and tourist information.	32	49.23%	22	33.85%	11	16.92%	65
D5	Create a separated bike path along King’s Highway.	31	44.93%	27	39.13%	11	15.94%	69
D6	Look for ways to accommodate bicyclists through separate paths, bike lanes, and signs where appropriate.	59	74.68%	12	15.19%	8	10.13%	79
E1	Equip entrepreneurs with resources on creating and funding startups, writing business plans, and applying for grants.	24	32.43%	31	41.89%	19	25.68%	74
E2	Attract Internet-based businesses to the Island.	21	29.17%	20	27.78%	31	43.06%	72
E3	Explore economic ventures that utilize the skilled labor on the Island, such as the exporting of woodworking products, furniture, or other artisan products.	28	41.18%	28	41.18%	12	17.65%	68
E4	Invest in a technical career center or cooperatively-owned “maker space” on the Island with equipment, skill-sharing, and educational classes.	35	42.68%	30	36.59%	17	20.73%	82
E5	Advertise apprenticeship opportunities on the Island with plumbers, carpenters, electricians, and other trade jobs.	35	60.34%	16	27.59%	7	12.07%	58

		Level of Priority:						
		High		Medium		Low		
ID #	Priority Description	# of votes	% of votes	# of votes	% of votes	# of votes	% of votes	Total # of Responses
E6	Host an annual workshop or training for those in the hospitality industry.	25	29.76%	31	36.90%	28	33.33%	84
F1	Require additional inspections of septic systems of private property and the community septic system in St. James Township.	40	47.62%	28	33.33%	16	19.05%	84
F2	Look for ways to improve existing requirements for a vegetative buffer on properties adjacent to lakes and streams.	22	37.93%	28	48.28%	8	13.79%	58
F3	Review existing regulations for impervious surfaces permitted on waterfront lots to ensure they are restrictive enough to prevent water quality decline.	26	47.27%	20	36.36%	9	16.36%	55
F4	Widely share knowledge and data about the water quality of the Island’s inland lakes.	44	67.69%	14	21.54%	7	10.77%	65
F5	Regulate the amount of impervious surface permitted on waterfront lots (i.e., roads, buildings, driveways).	46	60.53%	19	25.00%	11	14.47%	76
G1	Provide washing stations for boaters to clean crafts.	28	41.79%	23	34.33%	16	23.88%	67
G2	Survey the archipelago’s plant and animal species.	37	51.39%	27	37.50%	8	11.11%	72
G3	Protect dunes and beaches with educational signs at public access points.	54	80.60%	9	13.43%	4	5.97%	67
G4	Enforce dark sky protections to protect nocturnal habitat.	39	68.42%	11	19.30%	7	12.28%	57

		Level of Priority:						
		High		Medium		Low		
ID #	Priority Description	# of votes	% of votes	# of votes	% of votes	# of votes	% of votes	Total # of Responses
G5	Identify and fix culverts that are damaging fish migration and health.	34	66.67%	12	23.53%	5	9.80%	51
G6	Protect tree canopy, especially near streams and rivers.	44	64.71%	20	29.41%	4	5.88%	68
G7	Manage the marina and near-shore areas for additional fish habitat.	28	50.00%	23	41.07%	5	8.93%	56
G8	Require that new developments are provided educational materials about how private property owners can protect native plants, animals, and preserve the environment on their land.	34	59.65%	14	24.56%	9	15.79%	57
H1	Provide affordable options for removing junk cars and large debris.	53	80.30%	10	15.15%	3	4.55%	66
H2	Enforce code violations for blight removal and strengthen code requirements.	31	64.58%	12	25.00%	5	10.42%	48
H3	Protect tree canopy near the Island’s Forest Roads.	27	57.45%	16	34.04%	4	8.51%	47
H4	Protect air quality through increased dust control.	57	76.00%	14	18.67%	4	5.33%	75
H5	Enforce noise ordinances for fireworks, ORV use, and other loud disturbances.	29	48.33%	15	25.00%	16	26.67%	60
H6	Remove beech trees killed by Beech Bark Disease before damage to homes and other trees can occur.	25	45.45%	16	29.09%	14	25.45%	55

		Level of Priority:						
		High		Medium		Low		
ID #	Priority Description	# of votes	% of votes	# of votes	% of votes	# of votes	% of votes	Total # of Responses
H7	Evaluate coastal setbacks and erosion rates to determine where new buildings should be set farther back from the water.	53	72.60%	14	19.18%	6	8.22%	73
I1	Stock native fish in inland lakes that are more tolerant to warm water as lakes continue to warm.	54	60.67%	22	24.72%	13	14.61%	89
I2	Work with DNR to fund forest adaptation projects, focused on trees most at risk of disease or decline due to climate change.	24	46.15%	19	36.54%	9	17.31%	52
I3	Continue to map the locations of invasive species with an understanding of areas more at risk to future infestation.	55	76.39%	14	19.44%	3	4.17%	72
I4	Coordinate with the Beaver Island Community School to incorporate environmental education.	58	78.38%	9	12.16%	7	9.46%	74
I5	Work with DNR to assess wildfire risk and identify actions to reduce the risk.	42	72.41%	11	18.97%	5	8.62%	58
J1	Incentivize affordable monthly rentals for those looking to try out life on Beaver Island with little risk.	62	69.66%	15	16.85%	12	13.48%	89
J2	Look for ways to improve existing requirements for a vegetative buffer on properties adjacent to lakes and streams.2	51	57.30%	29	32.58%	9	10.11%	89
J3	Lower the minimum building size through proactive zoning to enable tiny-home development.	49	63.64%	18	23.38%	10	12.99%	77
J4	Designate an area of land for micro-housing. Location should be near existing infrastructure and perhaps on lots unsuitable for traditional development.	45	63.38%	15	21.13%	11	15.49%	71

		Level of Priority:						
		High		Medium		Low		
ID #	Priority Description	# of votes	% of votes	# of votes	% of votes	# of votes	% of votes	Total # of Responses
J5	Consider development of a community land trust to ensure the long-term affordability of properties even as they sell.	51	62.96%	17	20.99%	13	16.05%	81
J6	Maintain the quality and appearance of existing subsidized housing.	36	59.02%	18	29.51%	7	11.48%	61
J7	Start an affordable housing committee endorsed and supported by the townships.	45	68.18%	9	13.64%	12	18.18%	66
K1	Explore cooperative models to maintain and care for rental properties designed for summer laborers.	31	57.41%	13	24.07%	10	18.52%	54
K2	Research opportunities to house more summer labor on the Island.	42	70.00%	15	25.00%	3	5.00%	60
K3	Encourage additional lodging and accommodations on the Island.	39	52.00%	19	25.33%	17	22.67%	75
L1	Encourage private property owners to retrofit homes with local programs.	30	45.45%	20	30.30%	16	24.24%	66
L2	Allow and incentivize small-scale wind and solar on private property.	48	63.16%	14	18.42%	14	18.42%	76
L3	Pilot clean-energy projects in public buildings.	45	65.22%	17	24.64%	7	10.14%	69
M1	St. James and Peaine Townships should plan together for shared improvements to infrastructure.	48	81.36%	9	15.25%	2	3.39%	59

		Level of Priority:						
		High		Medium		Low		
ID #	Priority Description	# of votes	% of votes	# of votes	% of votes	# of votes	% of votes	Total # of Responses
M2	Look for ways to improve existing requirements for a vegetative buffer on properties adjacent to lakes and streams.3	31	45.59%	29	42.65%	8	11.76%	68
M3	Explore alternative funding models for managing the Emerald Isle.	33	45.21%	28	38.36%	12	16.44%	73
M4	Subsidize the cost of getting to and around Beaver Island through fare discounts, travel packages, or coupons.	30	41.10%	20	27.40%	23	31.51%	73
M5	Improve knowledge of transportation modes for tourists by putting clear information in a kiosk downtown.	30	35.71%	31	36.90%	23	27.38%	84
M6	Look for opportunities to make the Island more walkable and bikeable.	45	60.81%	17	22.97%	12	16.22%	74
M7	Work with the Sheriff’s office to protect lands that are inappropriate for ORV and snowmobile use.	64	74.42%	13	15.12%	9	10.47%	86
M8	Obtain funding and modify the ferries to be able to run more frequently (daily or twice daily) through the spring and fall season.	33	46.48%	26	36.62%	12	16.90%	71
N1	Reduce the number of flights impaired by bad weather through runway improvements at the public airport.	33	45.21%	24	32.88%	16	21.92%	73
N2	Ensure new development in hard-to-reach areas takes steps to reduce fire risk.	63	60.58%	26	25.00%	15	14.42%	104
N3	Ensure Advanced Life Support services are available on the Island.	48	77.42%	11	17.74%	3	4.84%	62

		Level of Priority:						
		High		Medium		Low		
ID #	Priority Description	# of votes	% of votes	# of votes	% of votes	# of votes	% of votes	Total # of Responses
N4	Rehearse the Emergency Plan for Island evacuation and sheltering.	32	55.17%	20	34.48%	6	10.34%	58
N5	Develop a new Disaster/Emergency Plan for the Island.	54	70.13%	18	23.38%	5	6.49%	77
N6	Ensure EMS services remain on the island.	51	89.47%	4	7.02%	2	3.51%	57
N7	Improve communications infrastructure for EMS. This includes providing regular community updates and infield access.	32	74.42%	9	20.93%	2	4.65%	43
O1	Use the Beaver Island Association’s Broadband survey results to identify the community’s needs and prioritize funding.	60	77.92%	12	15.58%	5	6.49%	77
O2	Offer educational forums on the importance of Broadband for local officials and institutions.	35	56.45%	17	27.42%	10	16.13%	62
O3	Recruit a local grassroots group that is willing to work together to increase Broadband accessibility.	32	53.33%	14	23.33%	14	23.33%	60
O4	Identify “case study” communities similar to the Island that have increased Broadband access.	33	54.10%	17	27.87%	11	18.03%	61
O5	Explore fiber optic installation through rural economic development grants.	50	71.43%	12	17.14%	8	11.43%	70
O6	Inform tourists of the areas on the Island that lack cellphone reception.	27	34.18%	25	31.65%	27	34.18%	79

		Level of Priority:						
		High		Medium		Low		
ID #	Priority Description	# of votes	% of votes	# of votes	% of votes	# of votes	% of votes	Total # of Responses
O7	Increase cell phone signal strength and extend coverage	47	64.38%	16	21.92%	10	13.70%	73
P1	Obtain new and replacement signage for Township roads.	32	32.00%	39	39.00%	29	29.00%	100
P2	Explore options to improve the Transfer Station so as to process large metal items, like cars.	39	58.21%	17	25.37%	11	16.42%	67
P3	Update the sign ordinances in each Township to be legally enforceable.	36	41.86%	32	37.21%	18	20.93%	86
P4	Provide public trash and recycling cans in the Downtown area, especially near the boat dock.	35	57.38%	16	26.23%	10	16.39%	61
P5	Continue to support extracurricular programming at the Beaver Island Community School.	48	65.75%	20	27.40%	5	6.85%	73
Q1	Consolidate surveys and current initiatives led by various groups in a common location, accessible to newcomers looking to volunteer their time or resources.	37	51.39%	23	31.94%	12	16.67%	72
Q2	Look for ways to improve existing requirements for a vegetative buffer on properties adjacent to lakes and streams.4	35	44.87%	30	38.46%	13	16.67%	78
Q3	Provide education on grant writing, conflict resolution, and networking support for government and non-government leaders alike.	50	54.35%	29	31.52%	13	14.13%	92
Q4	Hire a full-time Island Manager, responsible for management of joint Township projects and pursuit of grant opportunities.	28	41.79%	24	35.82%	15	22.39%	67

		Level of Priority:						
		High		Medium		Low		
ID #	Priority Description	# of votes	% of votes	# of votes	% of votes	# of votes	% of votes	Total # of Responses
Q1	Support the continued work of the Island Institute through the Office of the Great Lakes.	36	48.65%	31	41.89%	7	9.46%	74
Q2	Include representatives from all Township boards and commissions in the Northwest Michigan Island Collaborative.	46	56.79%	29	35.80%	6	7.41%	81
Q3	Consolidate the two Townships into one Township government.	22	33.33%	17	25.76%	27	40.91%	66
Q4	Require Township Boards and Commissions to write yearly reports published for community use.	41	56.16%	23	31.51%	9	12.33%	73
Q1	Review progress on the Master Plan’s goals yearly and revisit/revise as needed.	57	72.15%	18	22.78%	4	5.06%	79
R1	Increase awareness and support of the Beaver Island Food Pantry.	19	34.55%	22	40.00%	14	25.45%	55
R2	Increase availability and funding of in-home senior care.	48	72.73%	16	24.24%	2	3.03%	66
R3	Increase education about foraging opportunities on the Island.	30	38.96%	29	37.66%	18	23.38%	77
R4	Identify the needs of vulnerable populations like the disabled, low-income, and elderly.	21	47.73%	16	36.36%	7	15.91%	44
R5	Form a neighborhood “buddy network” to help ensure that care is provided to residents who may be isolated, especially in the winter months.	40	57.97%	21	30.43%	8	11.59%	69

		Level of Priority:						
		High		Medium		Low		
ID #	Priority Description	# of votes	% of votes	# of votes	% of votes	# of votes	% of votes	Total # of Responses
S1	Provide childcare options, such as in-home daycare and after-school care.	34	50.00%	26	38.24%	8	11.76%	68
S2	Provide pediatric services and women’s services on the Island, such as monthly visits from providers.	43	69.35%	14	22.58%	5	8.06%	62
S3	Provide regular programming for children and youth such as weekly dance classes or skill-based activities.	40	52.63%	25	32.89%	11	14.47%	76
S4	Create programming to get residents active in sports and exercise, especially in the winter months.	32	51.61%	23	37.10%	7	11.29%	62
S5	Invest in recreational equipment and/or a community gym.	42	53.16%	26	32.91%	11	13.92%	79
S6	Affiliate the Rural Health Center with a mainland hospital.	41	62.12%	17	25.76%	8	12.12%	66

701 total comments

Open House: 264 comments / 65 participants

Online Survey: approx. 437 comments / 96 participants

Cultural and Natural Resources

1. Outer Islands need zoning / planning to control development on private parcels
2. Target payment in lieu of taxes for DNR for recreation & protection
3. Pics and story available of Cable Bay Hotel – sign to find foundation and story
4. Where is Mrs. Redding's foundation? Is there public access?
5. Keep skies dark, educate the younger generation on positive habits to conserve land quality. Change signs in museum that say "Indian" to Native American (1)
6. Keep skies dark, educate the younger generation on positive habits to conserve land quality. Change signs in museum that say "Indian" to Native American (2)
7. Keep skies dark, educate the younger generation on positive habits to conserve land quality. Change signs in museum that say "Indian" to Native American (3)
8. Protect and be discreet about sensitive native and Irish cultural sites. Support Amik circle society.
9. Indigenous cultural preservation. Enable Indigenous population to their homeland (1)
10. Indigenous cultural preservation. Enable Indigenous population to their homeland (2)
11. Protect outer Islands eco and cultural sensitive places
12. We need to protect cultural historical sites like the stone circle, Garden Island Native American Cemetery – others that may be on private property. This expands to all the Outer Islands as well and protecting / respecting their natural and cultural resources
13. Before adding new resources and attractions to the Island, make sure there is adequate housing and transport to support current events like the music festival, birding and museum week
14. Keep skies dark (1)
15. Create affordable access to outer islands for day trips / rustic camping (1)
16. Create affordable access to outer islands for day trips / rustic camping (2)
17. I support the collaborative effort of NLMIC for national preserve management
18. Add Beaver Island Community Center as a cultural significant site / landmark
19. We desperately need to engage the next generation in the preservation of all of our historical places. They are crumbling and need more care and immediate attention. They look run down. Such beauty needs addressed! (1)
20. We desperately need to engage the next generation in the preservation of all of our historical places. They are crumbling and need more care and immediate attention. They look run down. Such beauty needs addressed! (2)
21. We desperately need to engage the next generation in the preservation of all of our historical places. They are crumbling and need more care and immediate attention. They look run down. Such beauty needs addressed! (3)
22. Crucial to reduce light pollution and preserve night sky CRITICAL
23. More native American historical places
24. Yes, Archipelago all the way

25. Create a cultural center celebrating the cultural diversity of our Archipelago. Native, Irish, Mormon, others
26. No street lights. That's what headlamps and car lights are for!
27. Indigenous cultural celebration!! Island Celebration
28. Keep Beaver Island from becoming another tourist trap. Keep the unspoiled beauty, beaches, woods, trails and nature. Preserve the history.
29. Community education classes for kids and adults. Trades courses and certification.
30. Remove streetlights near Whiskey Point Light. Allow the lighthouse light to truly shine and darken the sky. Retrofit harbor streetlights to be dark sky compliant.
31. Dark Sky Sanctuary- the stars are becoming less visible as cities become brighter and more reliant on artificial light. Islands are perfect for a dark sky sanctuary because it is remote and there are fewer people. We must preserve the starry night.
32. Increase township funding to museum / BIHS to increase cultural heritage protections
33. Dark sky designation would be a real plus for marketing (1)
34. Dark sky designation would be a real plus for marketing (2)
35. Dark sky designation would be a real plus for marketing (3)
36. Dark sky project is most important project on BI in a very long time. This will have far reaching positive impact on all of BI.
37. I want to visit the outer islands! This tourism area could be better developed.
38. Monitor use of out-of-sight public areas for overuse and protect adjacent public and private areas from trespass and ATV violations.
39. Huge exposure for the island and tourism.
40. Preservation in a natural state
41. Planning for the expanding growth and building of the island is crucial. Most of us love the rustic beauty of this place and these questions make me feel like Beaver Island is attempting to plan heavily for tourism. If the situation of summer housing and labor is not solved, then it can't handle anymore tourists
42. Dark sky designation — critically important to island
43. Anything positive that reflects BI's unique eco-system and situation to encourage tourism and preservation makes sense.
44. Beaver Island is one of the most unique places in the US and must be preserved with an eye on progress. BI is almost completely dependent on State funding and must also begin to become more independent through local initiatives that boost its financial resources. A Dark Sky Sanctuary designation would also be helpful in identifying BI as a unique place. We must protect the Native American history, the island's unique Irish and Mormon history, and its lighthouses and geography. It is a destination! We must bolster that.
45. Dark skies would be a terrific feature. Preservation of the lighthouses and Protar's home is important.
46. UNESCO would bring in a lot of tourists, but would not want it or cannot see it for Beaver Island.
47. I believe the main focus should be on the cultural significance of Beaver island, Dark Sky sanctuary and UNESCO designation should be secondary but I think are great ideas.
48. Beaver Island should become a dark sky sanctuary. Not only because the dark skies are a year-round tourist attraction, but also because they are an extremely important ecological resource for flora, fauna, fowl, fish and humans, that is diminishing. Additionally, we have cultural heritages that are also important to protect. Increased tourism is a blessing and a curse - we need proper protections in place

to make sure that our natural resources are not compromised or depleted, and to educate those who come to the Island so that they take away not just memories, but a better ecological understanding.

49. Dark skies is important
50. We should ensure protection of wildlife, wet lands, forests and shorelines through whatever protective means necessary.
51. Native: Garden Island's heritage and history as a Native community. I'd love to see more association and work done to tell those stories and respectfully invite folks to visit/tour Garden Island as part of a Beaver Island visit.
52. History: the likeliest gap right now involves the Head Lighthouse and Lighthouse school. How can we reactivate that space to tell the story of Beaver Island more fully? Perhaps there might also be ways to talk about the history of the old south end buildings/town from long ago.
Natural: the dark sky sanctuary work is phenomenal and I hope official recognition from the IDSA comes soon! I would love to see more official trails and signage to invite folks to hike and explore Beaver Island in a way that communes and experiences the flora and fauna of this island.
53. Retrofit low lighting to keep dark skies on Beaver Island. Identify lighting that must be changed.
54. Do more for current residents, aged, youth to guarantee a successful and pleasing life. Do not encourage new, short-term residents, do not build more hotels, keep the Island quaint, that is what people come here for, we do not need McDonalds, Starbucks, etc. Improve healthcare and care providers; get a resident doctor and dentist. Drastically improve internet speed!
55. We must improve our current trail system. We have had several instances where visitors have gotten lost to the cost of our community responders. Both townships have to work together to create loops, more navigable trails and better cell service to prevent hikers from getting lost.
56. There is no question that Beaver Island should be designated a Dark Sky Sanctuary. Because much of the "dark land" is DNR land, the DNR should be asked to give the designation its full support with documentation to help the island become a Dark Sky Sanctuary. Be careful of requests to designate some "cultural resources" as such without professional, knowledgeable research and input into the resource. For example, the Stone Circle was identified as being produced by glacial action by a professional archeologist in 1986, but her work has been conveniently ignored. Professionally documented and "certified" cultural resources should always be considered for protection. I am not sure what the UNESCO designation means for Beaver Island, but it should be used in materials used to advertise the island. An emblem or insignia representing the Ottawa Region should be included on all advertising materials
57. Preserve and promote the Indigenous people. Continue to promote the Irish settlers and their role. King Strang history.
58. As generations have passed and the island had gained newer tourism, the lack of respect for the island has been an ongoing and growing problem. Protection of our historical influences such as Beaver Head, Protar and the Odawa is equally as the protection of our beaches and dunes from ORVs. Dark sky networks and lake trails are important for honest growth
59. Yes to Beaver Island becoming a Dark Sky Sanctuary.
Yes to strong cultural significance of LTBB / other Indigenous peoples.
UNESCO designation is a wonderful cultural part of our region.
All of these things will increase tourism and notoriety of the island. The challenge will be to ensure Beaver Island remains ecologically secure as more people flock to it. It is highly important that both the cultural and the environmental features of the island are protected through sustainable development practices and long-term preparations.
60. History of the Island residents {LTBB, Mormon, Irish, Protar, etc, unique environment, Dark Sky, all historic structures left

61. I am strongly supportive of all these initiatives - including the Dark Sky Sanctuary, and education and enhancement of the Island's rich cultural heritages. This included celebrating Odawa and Irish cultural traditions, both historically and presently via living public festivals. It involves education on and preservation of sacred places as per support of the Amik Circle Society. The Obtawaing UNESCO Biosphere Region is a great positive potential source of regional identity that Beaver Island can share in and greatly benefit from!
62. Dark sky will protect our natural resources-lightening bugs and birds for instance as well as human health. Noise is becoming an issue. See NLMIC definition of cultural resources. The Obtawaing designation will only be meaningful should the community embrace it. It is non-binding and based on watershed not political county boundaries.
63. Tourism and climate refugees are destroying the very essence of the island that so many of us originally desired.
The current infrastructure cannot handle the increase in population. Values and traditions are being obliterated by new arrivals who have no respect for the environment nor their fellow man.
64. Dark sky sanctuary: yes please. Native American awareness and recognition: yes please. UNESCO may be a good thing. Please encourage passive house designs which use roughly 80% less energy. The island of all places should be focused on more sustainable housing. Continuing to build homes that are not efficient and use tons of resources to heat is not the best path for our fragile paradise. We can do better and could be the model for passive home communities, which would make the island more attractive to people who care deeply for our footprint being small. Thanks.
65. I totally support the dark sky initiative. All the Islands are our "home" and deserve consideration/ protection. They are to share.
66. Having Beaver Island (or parts of BI) recognized as a Dark Sky Sanctuary would be beneficial for the island for multiple purposes- tourism, research, natural community benefits, traditional/cultural aspects and conservation. I think the Island should fully support this effort that islanders themselves have been working towards for a few years now. The townships of Beaver Island should recognize the historical and cultural sites found within the BI Archipelago as they are found in their conditions here like no where else and it is our responsibility to acknowledge, protect and respect our past and these significant areas. We need legislation that recognizes these sites and protects them, especially in the case of private property development, starting at the township level and reaching to the state and federal level. The history of the BI Archipelago is the biggest part of what makes us Islanders and again it's our duty to step up in any way we can to preserve it and carry it on to future generations. Sites that should obtain this status and protection include the Stone Circle, burial grounds, historical buildings and properties, the harbor and many more. UNESCO recognition for the island offers us grant opportunities, further research capabilities, more contacts and partners to aid in our projects and events, along with expanding our tourism and preservation efforts. It is a non-regulatory organization that offers to aid the islands in some of our most significant identities; history, natural resources, and more, all while expanding our social and economic significance to a global audience.
67. I believe a designation of Beaver Island as a Dark Sky Sanctuary will benefit the island via new exposure to a community seeking experiences at global sanctuaries, bringing tourism and revenue to the island. It will be a highlight to market year-round. I very much appreciate the upkeep of the existing historical landmarks on the island as well as the museum and the museum's programming. I have not visited the outer islands but do view them as additional visitor experiences that could be curated.
68. The Dark Sky Sanctuary needs to address increasing encroachment of light sources on the upper peninsula and mainland. Until the last few years, I remember seeing few if any lights from towns and cities on the upper peninsula and mainland. Now, the lights from these sources are very noticeable. All the landmarks, historical, cultural sites, etc. should be preserved but identified with minimal signage. Part of the fun of the island is discovering hidden things. If you want everything presented, you should

probably go to Disneyland instead of Beaver Island. The outer islands need to be preserved as public lands while respecting the Native American and historical significance that exists there. If I understand correctly, the Grand Traverse Band of Ottawa and Chippewa have submitted a claim for several of the outer islands, including Garden and High Islands, as tribal lands. This effort should be fought to keep these islands under the State/DNR and undeveloped and accessible to all.

69. Please try and keep the island's charm and small town community in mind. Tourism is important, but also keep in mind the people whom have lived there their whole lives. Don't change too much.
70. Need dark sky sanctuary status! Protect outer Islands with zoning & planning permits
71. Little knowledge of any of these issues
72. Wow! You actually have a clue about the island ? Too long, too abstract. How about aging in place, hospice care, EMS and the health center coordinating home care? Nurse practitioners and EMS keeping current.
73. Protect Garden and High Islands!
74. The bike path should extend all the way to Donegal Bay, it is a major hazard for bikers and drivers without that path!
75. All of the above are important issues, with protection of the special natural and cultural spaces being a prime need.
76. I'd love to see more initiatives to protect the island natural resources and to celebrate its music, history, and culture.
77. Population growth on the island is of great concern. People want to move here because we're so welcoming and friendly, then put up no trespassing signs around their property. Western Shores, Greens Bay and Lake Genesee all have state access to beaches that have been blocked by newcomers who don't want anyone near their space. Cars and trucks speeding are becoming more common and more dangerous. Petition the speed limit on gravel or unpaved roads to be no higher than 40mph before there's a fatality. Year-round housing is desperately needed for younger people who want to make a life here, but no longer want to live with their parents. Also seasonal employee housing is needed. Be careful of additional hotels/motels/apartments or condos because our infrastructure is already struggling with the population boom since Covid. Internet/broadband isn't able to keep up with the demand. We also have limited medical resources. Quite a few people have had issues with incompetence at the medical center. We have no plans for nursing homes. Elderly are forced to leave the island when they or their families can no longer provide adequate care here. It's devastating. I believe the school is in good shape. The kids have great programs and educators. The museums are wonderful. Hope they continue to protect and promote our island history. The community center is thriving. I don't see a need for a downtown visitor kiosk when the community center and chamber of commerce are directly across from the boat dock. The marinas are enjoying the busy season. Blight is an issue and needs to be enforced. Take on one violator and the rest will fall in line. Old cars and metal junk here is ridiculous. The car crusher last year was helpful but we should have our own here. The cop needs more support. We're seeing more petty crimes than ever: vandalism, theft, malicious destruction of property. He can't be everywhere all the time and needs a second body (at least part-time) to assist during the summer/shoulder seasons and allow for vacation time. My family comes from the Irish emigration going back to the mid-1800's. We're a dwindling minority along with the native Americans. If the new folks here don't learn to respect the island and its community/resources/way of life, we're doomed. With climate change and global warming, we need to protect our island and lakes, now more than ever. Shelby Harris is doing an amazing job with invasive species. I'm in favor of promoting off season activities or festivals as long as we can handle the visitors. Many places (both lodging and restaurants) close down for the winter. When we started having the Labor Day Boston Marathon qualifiers here, it was so great for the island until 1) we couldn't house them all, and 2) the restaurants

shut down for employee end-of-summer activities. I have more thoughts but feel these are my most pressing concerns. Thank you ~

78. 1. A Dark Sky designation would improve tourism of that ilk. It could improve economic development. 2. Landmarks should be identified and protected from vandalism. Stone Circle is sacred and should be protected. 3. The outer islands which are part of St. James Township should follow all the guidelines set forth in the Zoning Ordinance.
79. I am deeply concerned about the safety of the outer islands. The outer islands present opportunities for us to protect their cultural resources and their environmental resources. These cultural and environmental resources are unique and rarely found in such pristine states in today's world. The outer islands contain connections to past cultures and environments that could all too easily be lost if we don't have in place zoning ordinances that are effective and enforced. And once these resources are gone, they are gone forever. We have a chance, if we act quickly enough, to protect the amazingly beautiful and rare environments that the outer islands contain. The beautiful land, water, and air are why people come here, and why they come back. We could end up like Mackinac Island- crowded, noisy and with little that actually is unique. I think the Dark Sky Sanctuary is a good goal for us. This goal takes a thoughtful addressing of what makes the Archipelago so special, and how we can use this beautiful resource. Zoning laws for the outer islands that are disseminated and enforced could be an important step on the road to protecting the outer islands. I support considering having the entire Beaver Archipelago named a UNESCO World Heritage Site. The rich resources that are all around us, which includes the people who reside here, could be a perfect fit for thoughtfully addressing the needs of both humans and the cultural resources, for both the present, and the future of us all.
80. We need to thin our forests and/or get rid of the thatch that collects and causes forest fires. We've seen what "preservation" does to California forests! These things need management and a good forestry program would aide in that end! One day there will be a massive forest fire on outer islands for the same reason! A lightning strike is all it takes. The forest will go into decline if not managed! All of the thoughts above this comment are good to pursue as well!
81. Dark Sky Sanctuary - good job to those working on this project.
82. Lighthouses and museum - doing a wonderful job.
83. Natural resources are one of the draws to the Islands. If not respected.....they will be destroyed. ORVs (especially rentals are tearing up the beaches and trails). The past few years there is more foot traffic all over the Islands. People are leaving more than foot prints. They are leaving their trash. Fireworks are being shot off into the inland lakes. Zoning to control and enforcement must take place.
84. The Natural Community Surveys of the Beaver Island Archipelago prepared by Joshua Cohen are essentially the playbook for managing the most special natural resources on Beaver and the other islands. More should be done to implement the recommendations of this detailed survey. For instance, deer exclosures were recommended in various high quality resources to allow regeneration. Deer browsing appears to be impeding Hemlock and other species on the forest floor. The survey report prioritizes which special resource areas should be prioritized. Two old growth forested areas (Southwest Old Growth and Martins Woods are in the High prioritization category. Because much of the old growth forest in these areas is on private land, conservation easements would be beneficial. In the immediate, protective zoning for designated old growth forest areas should be considered to protect the very limited old growth areas. A maximum amount of disturbance per parcel could allow a homesite on each parcel of record but preserve the vast majority of the rare old growth that simply cannot be replaced. Other landmarks: both lighthouses, old Morman log buildings, Protar Cabin, Stone Circle, Garden Island Cemetery, downtown commercial buildings. Dark skies are an amazing asset!
85. I would like to see development and cosmetic improvements slowed—I don't want to live in a Mackinaw or a Lake Placid type of area—I like our current state of mismatched, outdated lumpiness! I would like to see more of a focus on supporting the Islanders by providing good jobs. I would like to see an increase

in land conservation education and practices. I don't want paved roads or curbside garbage pickup. I want fewer trees cut down, old houses put back into use before new houses are allowed to be built, and the real estate agents who buy and sell Island property to take a training class in conservation. I would like zoning to be enforced for new builds, especially setbacks. I want only as much internet and cell reception as is necessary to keep everyone safe and allow for online jobs. I don't want an increased ferry or airplane service. Thank you for the survey!

86. Better cell phone coverage and public showers would be GREAT!!!
87. The recognition of the Island as a Dark Sky Sanctuary would be important to future tourism. We need to continue to Market the Historical aspects of the island and do more to open up Hiking and biking access and events on the Island.
88. Beaver Island's natural resources are what make this place special. The development that is being allowed on the Lake Michigan shoreline is deplorable. The land clearing and wetland filling that has taken place on Garden Island recently is terrible. The outer islands should be protected in their natural state.
89. Dark Sky designation important, including at the Whiskey Point Lighthouse.
Should continue to develop our historical and cultural identity as a core value. Secure funding for this. The outer islands need protecting. Enforce protection of the resources on these, including private land development laws. Participate in NLMIC issues.
90. A very enthusiastic YES to the Dark Sky Sanctuary! We attended one of their events and it was great. It seems a no-brainer to pursue this as much as possible island-wide. Locations with Dark Sky designation are becoming very popular. It's one of the least expensive ways of developing a tourist destination, as it doesn't require much labor or infrastructure. It's a win-win for all involved, because lighting that is Dark Sky compliant is just as good as traditional lighting at lighting things underneath it (while not spilling light into the sky above, uselessly).
More acknowledgement of Native American history of the island would be great. The Mormon and Irish stories and influences are widely known, but not so much when it comes to the original inhabitants.

Tourism & Economic Development

1. Dock at Fox Lake like Lake G
2. Interactive Children's Museum. Interactive Beaver Island all things. Island puzzles. Climbing wall made in Mimic Trees
3. Interactive Children's Museum location community center
4. Signs / maps for ORV and many "STOP" ORV signs on trails and beaches (1)
5. Signs / maps for ORV and many "STOP" ORV signs on trails and beaches (2)
6. Businesses need employee housing. New workers can't move here not enough year round housing
7. Need to have at least one restaurant open every day with late kitchen hours. Night life is a bad word!
8. Lamp posts @ night-only in town 2 blocks. Remove at lighthouse and residential light pollution.
9. Help educate visitors on how to care for the Island. Protect public land, reduce waste stream, reduce vehicle speed, use septic best practices. Send the message that they have to participate not just use (1)
10. Help educate visitors on how to care for the Island. Protect public land, reduce waste stream, reduce vehicle speed, use septic best practices. Send the message that they have to participate not just use (2)
11. Help educate visitors on how to care for the Island. Protect public land, reduce waste stream, reduce vehicle speed, use septic best practices. Send the message that they have to participate not just use (3)
12. More bikes and bike infrastructure (1)
13. More bikes and bike infrastructure (2)
14. More bikes and bike infrastructure (3)
15. There is really no point in this discussion until affordable housing is addressed. We do not have enough workers to take care of the people new. We can't expect to attract people who want to work by offering them a campsite or couch! I strongly feel that the workers that we are attracting have no driver's license or hiding from responsibilities
16. Limit destructive use of forests, beaches, and trails. Designate and limit ORV permitted and non-permitted areas and enforce. (1)
17. Limit destructive use of forests, beaches, and trails. Designate and limit ORV permitted and non-permitted areas and enforce.(2)
18. Weekly farm / art markets at community center in "off season" (1)
19. Weekly farm / art markets at community center in "off season"(2)
20. Unrestricted ORV / ATV rental is destructive. Need enforceable ordinance for regulating this.
21. ATVs / ORVs jet ski rules. Destroying Island! (1)
22. ATVs / ORVs jet ski rules. Destroying Island! (2)
23. ATVs / ORVs endanger eco-systems
24. Incentivize / promote longer term visitors (2 weeks – 1month) especially on shoulder seasons
25. Townships increase funding to Chamber of Commerce to add shoulder season marketing
26. Tourists come for different reasons- we somehow need to market / attract those who appreciate and respect our natural areas and resources rather than sees it as a free-for-all abuse opportunity
27. Don't promote BI as a place for ORV increase natural bike paths through the island to make moving around easier. Make tourist spots handicap accessible and friendly.
28. Rental properties septic inspections, limit # of cars per rental on properties. Enforce zoning.
29. Home should be limited on # of persons staying. How many bedrooms – septic system made for.

30. Our natural and cultural resources are what make BI unique, and we should do all in our power to protect and keep in balance our tourism with these features – preservation, tours, educational outreach events. We can increase year-round business by offering more daily needs like childcare, physical therapy, health center, indoor pool, etc. (1)
31. Our natural and cultural resources are what make BI unique, and we should do all in our power to protect and keep in balance our tourism with these features – preservation, tours, educational outreach events. We can increase year-round business by offering more daily needs like childcare, physical therapy, health center, indoor pool, etc.(2)
32. Keep BI less developed – that’s why people come here
33. Encourage local arts and crafts persons to market their work. It would give tourists “destinations” like a trip to the toy store museum. Market to gravel bike riders. This place is already perfect! Don’t make trails too perfect.
34. Threats- 4 wheelers on beach. Offer special discounts for travel / vacation packages. Install and extend paved bike path.
35. Homecoming weekend bring back dance in the hall. Shows in the theater during homecoming week.
36. Light pollution threatens all natural resources, wildlife and humans
37. Work on existing trails and consider news ones. Make trails loop, make GPS transmitters available at community center (1)
38. Work on existing trails and consider news ones. Make trails loop, make GPS transmitters available at community center (2)
39. Color tour advertisements
40. Downtown shuttle service for day trippers
41. Solid marketing team and plan. Winter events for adventure, food and celebrations
42. Trails, parks, beaches. More public access
43. Provide tourists with a “safe biking” brochure reminding that this isn’t Mackinac Island. Stay right. Single file. Stop on narrow roads when encountering large vehicles, etc. Suggest alternative downtown routes- like Pine St. Lake Drive to Limestone to light house, etc. (1)
44. Provide tourists with a “safe biking” brochure reminding that this isn’t Mackinac Island. Stay right. Single file. Stop on narrow roads when encountering large vehicles, etc. Suggest alternative downtown routes- like Pine St. Lake Drive to Limestone to light house, etc. (2)
45. Year round business requires affordable housing!
46. Tourism is destroying our natural resources. ORV tracks all over. Places where they should not be allowed. Trash being dumped. Get rid of the ORV rentals.
47. Increased broadband and cell phone coverage island-wide is essential for safety of residents/visitors and to encourage growth in island residents.
48. The ORV’s are threatening the islands natural resources
49. Continued issue with high speed internet - must be solved for growth of any meaningful kind to be possible.
50. Better and more options for affordable long-term and worker housing. BI is experiencing a housing crisis that we MUST fix. We must also have island-wide cellular service (for safety) and high-speed internet to attract home workers, small businesses, and families. High speed internet is a simple utility that must be offered. If we don't, we will fall behind. We must also begin to expand resources, businesses, and island opportunities to the SOuth end of the island.

51. If development continues it will take away the beauty, peace and solitude of the island. It will become just like any other place, except harder to get to. I would like to see the island promote quiet activities: canoeing, hiking, fishing, biking, star gazing, yoga retreats, classes in the outdoors. Anything that would promote nature. Once you lose that it is very hard to get it back.
52. From my own view point, I think snowmobile tours (On Beaver island and across the frozen lake) would be fun and draw a lot of people who might otherwise drive to the UP instead.
Unfortunately alot of the shops/restaurants are closed which could deter people or make them wait for the summer to visit. To me, its my get away from Ann Arbor. Love the nature, parts of the state land on the south end of the island clearly has had almost no one go through it in a very long time, which I have never seen before in other parts of the state. Knowing that 2 American chestnut trees still prevail here along with Ash is for unique for the state. I can go to one of the more public beaches with friends or family or go to one of the more secluded beaches and enjoy the peace and quiet. I was able to get help with a problem by asking someone in the bar who directed me to the right person. I believe so. As long as no chemical heavy industries try to move to the island I think we are ok here. If the emerald ash borer or asian carp arrive it could have devastating effects but not much we can do about it to prevent.
53. See my answer to #20. The impacts of tourism and new home ownership on natural resources are currently out of balance. There are a lot of folks who come to Beaver Island with the mindset that they can do whatever they want whenever they want with little to no consequence - as if the island is lawless. Long-time residents didn't need rules because they respect their neighbors and the Island. New residents and tourists have a different mindset and need rules. I'm not crazy that it has to be this way, but the Island needs to be protected from generations that come here with a sense of entitlement that has not been earned.
54. Beaver island is unique as a place to get away from mainland life
55. Increase business by encouraging building low-med priced year-round housing. Decrease min sqft to 275-450 in Port St James to allow efficiency or 1 bedroom units. Make 50% of units designated as year-round rentals.
56. Improved internet through broadband or Starlink. Affordable housing for workers; fund programs to develop trades and skilled workers for plumbing, electrical, auto mechanics, construction, etc. beaver Island Trade school - compete your high school diploma and become an apprentice to learn a trade needed on the island. A community garden to provide fresh produce. Fresh produce is severely lacking on the island.
57. The biggest questions I get asked from mainlanders who haven't visited BI before are around the island infrastructure and the difficulty in getting to/from the island. Considering the limited ferry rides outside of the summer months, many folks are immediately struck by the logistics of getting here. It's both a blessing and a curse! If the island wishes to increase year-round business, we must acknowledge that the likeliest steps needed to do this involve improving our infrastructure. Lacking fiber internet and consistent full-island cell-phone coverage are big problems, and the need for a car to get around outside of the greater downtown area is another one. There might be opportunities to pave an additional stretch of road or two over the next 5-10 years, especially between the airports and town. The challenge of balancing "economic progress" and "natural resources" is a real one. I would suggest that, as long as we keep "preserve the health and balance of the Archipelago" in our mind's eye, we can deliberately and sustainably improve the opportunities on the island for both current and future Islanders (and visitors).
58. Fine improper use of ATVs.
59. Beaver Island will remain "unique" as long as building and new residents decrease in number. Do not pave roads. Tourism is one thing, but large and noisy and inconsiderate tourists are not wanted.

60. Orvs on trails not designed for them.
61. Year-round business may be increasing due to the number of full-time residents moving to the island. Beaver Island is a unique place because it is an island and has hundreds of acres of unspoiled land where one can find solitude, a rare commodity in the eastern part of the US. Tourism is threatening natural resources, especially the unregulated use of ATVs/ORVs/quads/side-by-sides, whatever you want to call the godawful vehicles now invading Beaver's dirt roads, trails, and unfortunately beaches. THERE SHOULD BE SERIOUS CONSIDERATION GIVEN TO REGULATING THESE VEHICLES BEFORE NATURAL RESOURCES ARE DAMAGED EVEN MORE!!!!
62. Keep from passing to many regulations that will discourage opening business
63. Beaver Island is a great place to disconnect from the day to day electronic bombardment. For me, not having connectivity helps.
64. Supply and demand are what natures year round demand. McDonoughs even limits its hours during the off season. We are unique to what our families have given us. The richness of family history is what makes us unique. That newer individuals (the last 10-20 years) do not understand or appreciate what our families have built. Tourism is destroying our natural resources. From ORVs on beaches and dunes to people thinking the roads are meant for rally style racing there is no respect or control.
65. Beaver Island is characterized by it's lack of highways, malls, drive throughs and parking garages - all examples of car dependent infrastructure! Beaver Island preserves an authentic American experience, almost like a trip back in time. The Island would strongly benefit from increased development within the town of St. James, including supporting local business, promoting higher density development within town (expanding downtown strip, mixed use development zoning, while encouraging pedestrian and cyclist oriented development.) The Island should strive to limit any 'car dependence' and ensure walk-ability and bike-ability to all of the islands attractions and sights. Tourists should not have to pay for their cars to come across in order to experience the island, locals shouldn't have to buy a tank of gas just to get groceries, and car rentals or electric cars are no substitute.
66. Township prioritize broadband funding
67. National "chain" businesses (e.g. chain hotels and restaurants like Holiday Inn, Marriott, Wendy's, etc.) increase the chance of sprawl, environmental degrade, and take away from the island's character. These should be strictly limited or even prohibited altogether. Boating activities should be monitored closely. Any rapid increase in tourism activities can be detrimental to natural resources unless proper plans are in place to protect the land and wildlife.
68. Beaver Island tourism in the summer is dependent on availability of short term housing, and until that problem is solved there will be limited opportunities for growth and development. Beaver Island is slowly becoming known as a destination for both ecological and cultural tourism during 9 months of the year, with the highest level of activity in the summer, but the housing shortage is a critical limitation. In addition, there is very limited daytripping to and from the island due to lack of evening or night travel options. If there were evening ferries and flights, many people would attend summer events during annual events like the Birding weekends, Museum Week, Baroque on Beaver Festival, Jazz and other series at the BIC Center, etc. - and that would reduce pressure on overnight and short term accommodations.
69. Need a good restaurant open in the winter with a fireplace
70. The quality of quietude is key. Impacts on the soundscape and landscape from mechanized off road vehicles and jet skis needs to be closely regulated, and designated clearly identified areas and times

open for these activities are needed -- as well as clear time and geographic zones where these activities are prohibited.

71. We've heard it over and over again-get a boat cleaning station to protect the lakes. Once zebra or quagga mussels are introduced the fisheries are done in the interior lakes. No DNR CO to monitor state lands and outer islands. Tourist need to be educated on proper land use. More homes open for rent during the winter would help off season visitors but we only have one restaurant open and people get tired of the same menu-according to visitors.
72. The balance between nature and tourism is seriously out of alignment. The renting of boats and jet ski and off road vehicles purely for the sake of profit, without any regard for nature is obscene. That is not the Beaver Island I once knew! Tourism is killing the island way of life! We are well on our way to becoming another Mackinac Island. God help us all!
73. Too many tourists. Slow down the marketing until the infrastructure catches up.
74. Create affordable housing for workers to live. Can't have the chicken before the egg.
75. Increase year-round business? - more places to eat GOOD food. A unique place? - the environment and beauty. Tourism in balance with natural resources? - no! Threat to resources? - UTV rentals! Terrible machines to hear and watch tear up beaches and walking trails. Zero education or enforcement currently.
76. We need service sector employees or this becomes a mute point.
77. Given the circumstances the last few years, a new model of economic sustainability has emerged. tourism has been the primary industry that has sustained BI. But with the acceptance and change in attitude about working from home, income can generated through many businesses on the mainland. Success depends on reliable fast internet connections. DSL is not sufficient. starlink is one option but fiberoptic lines are needed for another option and should be pursued with vigor. If more and more people can work from home(ie BI), this will require an infrastructure and supporting businesses to support more people. In terms of natural resources, exploration of bringing back the fish to the region needs to be explored and developed. wind and solar energy generated by individuals that can be tied to the grid should be encouraged.
78. Beaver Island can increase year-round business by investing in businesses that are essential to a healthy life- physical activities whether indoor or outside (ex: health center with a gym/pool, bowling, cross country skiing, etc.), caretaking facilities (ex: daycare, physical therapy, etc.), animal care (ex: kennels, groomers, dog park, etc.), healthier food options, and by investing in our broadband to attract businesses that rely on strong internet connection. Beaver Island is a unique place thanks to its natural resources and its history. It is preservation, protection and outreach that will keep these aspects healthy and sustainable to help provide for our tourism economy while providing for future generations. We are at the edge of balance in terms of our tourism and natural resources- we have experienced a growth in our population at a rate unseen before and during a time of financial and health unease. It is long over due that we secure our legislation and our enforcement in sustainable and efficient ways to properly enjoy and respect our natural resources here within the Archipelago. We need funding towards natural resources, law enforcement and educational outreach to accomplish this. Activities that threaten the Island's natural resources include irresponsible ORV use, unsupervised and illegal development especially in regards to our huge increase in private land sale near threatened natural communities, our outdated septic systems, increase of shoreline development such as sea walls and housing, the spread of invasive species and lack of funding.
79. High speed internet is paramount to attract more year-round business. People will stay longer if they know they can work from a location. Highlighting the winter sports/opportunities are also areas of possible growth. Beaver Island is a beautiful place with a unique history. Continuing/improving signage & culture on sustainability and maintenance of the ecosystem will have residual effects. I do worry

about the lack of fire prevention activities -- clearing dead fall, creating break lines, etc. A natural fire caused by lightning could be devastating.

80. The primary way to increase year-round business on the island is a solid internet infrastructure. Folks can't live and work remotely without it. What has made Beaver Island a unique place for the 40-plus years I've been coming here is the abundance of nature, the lack of people, the lack of rules and regulations deferring to common sense, freedom to roam, and friendly folks. The impacts of tourism and natural resource seem mostly in balance. The imbalance seems more to be with summer or part-time residence that build homes and see the island as bragging rights. If you look from the water, many of the older homes were designed and built to be part of the landscape and are almost unnoticeable from the water and have little or no yard. Unfortunately, the same cannot be said about many newer homes that stand out like prized scars to the view and landscape. The activity that threaten's the island's natural resources the most is the complacency and laziness of folks to defer to laws, rules, signs, etc. rather than good old fashion personal intervention. If someone is on your property or where they shouldn't be, walk up and talk to them. A great example is the banning of ORV. Off Road Vehicles provide an affordable and economic means of transportation for many islanders, summer residents, and some tourists. Most drive respectfully and reasonably. Transgressions usually occur on poorly marked drives and access points. Few folks in ORV or otherwise go down roads, trails, drives, fields, or dunes that don't seem open and accessible. Transgressors are usually easily redirected with friendly conversation. Those that aren't don't care about the laws, rules, signs, etc., or friendly conversation ... then call Sheriff Joe.
81. More planning before new recreational businesses arrive. I.e. The ATV rentals this summer are driven by people with no training, no protection and the vehicles themselves are not well maintained. Very dangerous.
82. I believe the housing issue to be a major factor in the increase of year-round businesses. The already established businesses cannot find employees to work and one of these reasons being that the housing is hard to find.
83. Have more restaurants/ hotels open throughout the winter months. The best part of the island is how it's not like everywhere else. It's laidback, relaxing, and beautiful. Need more housing for seasonal works for the restaurants to feed the island.
84. Need employee housing..seasonal & year round. Limit ORV to minimal trails & NOT beaches
85. Need housing, especially rental housing
86. How about eco tours!
87. Keep those snooty people away that want to make it modern.
88. The island cannot handle increased tourism, need to connect with business leaders to get direction on marketing activities
89. We need fiber to the home. every home and business
90. We now have to consider over-tourism. Visitors should be invited with an expectation they are being invited into a home as a guest, and behave appropriately. ORV use has exploded and in many cases with inappropriate use . Rental owners need to step up their game, even become regulated in terms of facility condition and sharing/enforcing island living expectations.
91. Build more bike paths. Extend the existing path to Donegal Bay and pursue other initiatives to build a pedestrian/bike friendly island. Discourage ORV use, especially illegal use on trails and beaches.
92. 1. The shoulder seasons should allow for conferences, workshops, arts and crafts, speaker series events. Such events are better served in the off season when residents have more time. 2. A quiet, natural environment which is what drew people here to live. Tourism and the environment are out of balance due to the influx of motorize toys on the land and water. Noise pollution has increased. Bad behavior is

on the increase and is difficult to police. There needs to be more law enforcement and follow through with citations.

93. It makes no sense to increase year-round business, or any business, if the cultural and natural resources of all the islands in the Archipelago are not actively protected. "Actively protected" is a key phrase here. It only takes one person to run their ORV on trails and on islands where that ORV is prohibited for others to see that the original person got away with it, so now everyone feels free to copy that destructive behavior. We need laws that protect the unique resources of all the islands, and we need to hire people who can enforce the laws. In terms of immediate needs, the spit on High Island is home in the summer to the endangered piping plover. That spit needs to have humans protecting the area that the piping plovers nest on, during the nesting season. It is a beautiful spot and people don't realize when they come with their boats and sunbathe and party in habitat that the plovers need to survive. It seems to me that most people would forgo pulling up in that spot if they knew what they were protecting. Maybe plover protectors, like they do with sturgeon on the Black River, could be organized. It would take a concerted effort for tourism and resource protection to find a healthy balance, but it is absolutely possible. And I think the people of Beaver Island can do this.
94. We need to determine if we could find an energy source already here like natural gas. It would be the ultimate answer to make living on the island affordable. So much could be done such as green houses, light manufacturing, wood products and much more! Possibly even power the ferry! THAT would be the answer!!
95. Off road vehicles that got bad drivers that need to be educated!!!
96. The Island is what it is. Has anyone ever been successful increasing year-round business? Same questions and issues for years..... Natural resource, peace, and solitude are what make this place special. The impact of tourism is becoming a huge issue. The peace and solitude is becoming less with the hum of ORVs and jet skis. Visitors come and have no respect for the environment. Trash is on the trails, roads, and in our waters. They are on vacation and may never come back. They don't care how they leave the Islands. Septic systems/drain fields are a huge threat to the lakes. People renting properties are packing the places beyond what septic and drain fields were made for. Fireworks being shot off into the inland lakes..... Boats/jet skis being transported between bodies of waters.
97. There need to be more options for overnight stays and MORE options for dining. It's beautiful natural resources. For the first time in more than 50 years I am afraid we are heading toward IMBALANCE. RENTALS both of "stuff", boats, not cleaned, moving from Lake M to our inland lakes, ORVs, cottages, etc. I could give you example after example of gross disrespect and negligence, absolute lawlessness on the island this summer. I certainly am not talking about all renters, but there are many who have no respect of the things they do not own or the places they do not live! The townships MUST have ORDINANCES for rental properties and they must be enforced. Cities all over this state and this country have requirements in order to rent your home. Yearly license should be required with those monies going to hire a township rental administrator. Why should someone who doesn't even live in this state make a \$100,000 profit off renting with our townships not seeing a penny of it? Even our current hotel/motel owners have all kinds of requirements they must meet. Just not right! In Grand Haven Mi if you have a home to rent with one bathroom, you can rent to two people. If you want to rent to 4 people you must have two bathrooms, etc. On our beautiful environmentally sensitive lakes, including our inland lakes, there are homes that were built for two people, the septic system was built for two people and the home is being rented and advertised to sleep 15 people. The home is less than 50 feet from the shore. The toilets are probably being flushed 60 to 70 times a day, every day, every week, all summer long. How can we protect our lakes and our ground water. This is just one example! I could give you many! We MUST make protecting our natural resources our biggest priority!

98. Market the beauty of winter. Many don't realize how special Great Lakes ice can be- pictures, videos for summer tourists. What makes island unique: an unbelievable combination of stunning beaches and forests, dirt/sand roads, the wave, the friendly people, isolated location, Mayberry feel to downtown, no commercial "chains", the community center, the civic pride that is seen in the museum, community events, etc. Have to be careful with some aspects of tourism- signage and enforcement of off road vehicles to keep out of sensitive areas.
99. Better internet service.
100. We need to increase housing for tourists and year round residents. We need more restaurants that offer a wider variety of food and have predictable hours and better service . There is not enough competition in this space.
101. Rampant shoreline development is the largest risk to the island.
102. Don't want to see uncontrolled growth on the island. Should be structured. If too many houses are built, locals can't maintain their homes with existing contractors, plumbers and electricians who are available. Need bike paths through downtown to protect them (very unsafe bikeriding behavior) and out King's Highway, backroads. I won't even drive through the downtown when alot of visitors are here. What makes the island unique will be lost with too much tourism. It is the charm and friendliness of the people, the beauty, and small-town setting. It also threatens our natural resources with atv use on beaches, paths and dunes.
103. We can't continue to bring people here if there are no service workers and services to support this. Increased stupidity of said tourists like not following bike laws, ORV laws, or drinking and driving laws makes me skeptical that signage, literature and kiosks is going to make any difference.
104. 1. The island is unique for the amount of undeveloped, pristine nature in both the interior (for hikers, hunters, etc.) and along the shore (for boaters and fishers). The lack of crowds and noise in natural areas is very rare in this world, and precious. 2. ORV's should not be encouraged because they are so intrusive upon others, i.e. take away the peacefulness of the island for people at great distances, and they are so destructive to fragile ecosystems that can't bounce back. 3. Rare plants like the Michigan monkey flower should be encouraged to grow in more places on the island. Signage letting people know that the island is the location of special plant and animal species might help encourage respect and appreciation for the fragile ecosystems. 4. Building should not be allowed so close to the shore. Water and dunes move, more than people seem willing to plan for. And shoreline development is very destructive to the fragile ecosystems there. 5. Signage should be placed around to let people know not to let their dogs run free in the spring when nesting birds are breeding.

Accessibility

1. Healthcare services need more investment. Particularly women, pediatrics and mental health resources (1)
2. Healthcare services need more investment. Particularly women, pediatrics and mental health resources (2)
3. Healthcare services need more investment. Particularly women, pediatrics and mental health resources (3)
4. Think about worker housing differently. How can we make housing that is very attractive to workers > not just cheap. People have to want to live here and enjoy their experience as workers.
5. Reduce or eliminate minimum housing SQ FT requirements small housing with shared facilities are affordable and sustainable.
6. Functional internet. Highspeed. It's the future for everyday use (1)
7. Functional internet. Highspeed. It's the future for everyday use (2)
8. WTF- where's the fiber? Fiber to the home and to the mainland is the #1 need for our future
9. We need strong and reliable internet to sustain our livelihood. We need workforce housing – otherwise there will be no one to keep the island running. I would like to see more services provided to women and expecting families.
10. Healthcare Services more needed- overworked staff, no where for someone to live to be attracted to a position. Move EMTs to the health center. Plenty of room.
11. Affordable. Low-cost housing. Fast and low-cost internet. Better health services elderly (1)
12. Affordable. Low-cost housing. Fast and low-cost internet. Better health services elderly (2)
13. Year ROUND residents. Break in price of Boat / Plan Tickets. We pay taxes we should have access to lower cost in some
14. Many people move off the Island due to declining health. They can't afford to fly that often (1)
15. Many people move off the Island due to declining health. They can't afford to fly that often (2)
16. Fix the internet. Biggest issue in BI (1)
17. Fix the internet. Biggest issue in BI (2)
18. Consider incentives for existing housing to become more affordable. How can home/landowners provide housing for workers that benefits both of them?
19. Fund housing research and survey. Gather data on what is actually "affordable" rent for existing island workers. Can current workers afford to live here?
20. Update zoning requirements
21. We need strong and reliable internet
22. Housing is a human right! The lack of affordable year-round housing is a crisis. To say nothing of home ownership obstacles for middle -low income islanders. We risk losing out on massive labor if the current trend continues.
23. Fiber internet is #1 priority for our long-term viability
24. Health center should be open on weekend
25. Limit VBRO & Airbnb. Open year-round renters affordable for families
26. Internet is a utility not a luxury!
27. CPR / First aid community classes
28. Affordable and available housing for ALL
29. Need island wide internet (1)

30. Need island wide internet (2)
31. Starlink internet @ community center (1) internet
32. Starlink internet @ community center (2) internet
33. Internet (I say kind of because you might need to call somebody or see what there is to do (visitors))
34. We need faster internet that does not rely in a land line
35. Absolute fast low-cost reliable internet!!! (4)
36. Absolute fast low-cost reliable internet!!! (3)
37. Absolute fast low-cost reliable internet!!! (2)
38. Absolute fast low-cost reliable internet!!! (1)
39. Absolute fast low-cost reliable internet!!!
40. Equal senior services as the mainland ie – senior meals and medical services
41. Can not survive without affordable housing that supports tourism!
42. Need adequate internet (1)
43. Need adequate internet (2)
44. Healthcare is a barrier
45. Increase handicap accessibility around popular tourists' spots, affordable housing is a must (1)
46. Increase handicap accessibility around popular tourists' spots, affordable housing is a must (2)
47. A comprehensive study of what affordable housing is and what is really needed on BI
48. Affordable housing, yes! Flexible building codes. Trailer Park district.
49. Tax breaks for homeowners who provide year round housing rentals on their property.
50. Internet is key to long term managed growth. Smaller nimble houses or dorm style housing for sure workers is needed. Healthcare is better here on island than downstate
51. Reliable high speed internet island wide is very important.
Affordable summer housing is important.
52. Internet availability is an important factor in attracting people who work remotely.
53. Yes internet important. Affordable housing means an affordable decent place for employees to live.
Healthcare services are becoming barrier. Services have declined over the past several years.
54. Increased affordable workforce housing is a high priority . As the average age of island residents grow, specialized health care is an important issue. Increased internet connection with mainland providers is an important goal.
55. Healthcare services are a barrier to remaining on the island
56. internet is a huge issue and fundamental to so many other positive ways forward. Affordable housing is critical to maintain services as BI grows. Health care is a 'no brainer' with our isolation and the potential of working with mainland hospitals (requires internet of course) and preventing residents from having to leave, or creating 'pause' for those thinking of moving here.
57. Internet speed and reliability are the only reason we don't live there full time. We can't work from Beaver Island until that changes. Affordable housing, or the lack thereof, is a major impact on attracting and keeping people on the island. Teens in college and young people often have no choice but to leave the island if they want to live alone. Recruiting a full-time doctor and nurses to the island is also critical.
58. You really can't grow old here unless you depend on your family's and friend's generosity. Maybe some type of accommodation on the mainland near the hospital for people who have to go off for medical.
59. -Unfortunately for anyone working today, we have to have internet. The internet speeds by TDS are no longer acceptable. I currently use a verizon mobile hotspot as it was cheaper than starlink for my uses. This allows me to work remotely which allows me to stay on the island longer each year.

-Probably an unpopular opinion...The people in there 20s and 30s are the group of people we need coming over. I think this could EASILY be achieved by allowing tiny homes(custom built on a trailer), mobile homes, or a permanent RV parks. If we set up lots to rent with water, septic and electricity like any other campsite. someone could buy a camper (5K for a decent use done on up) and allow people to stay in these full time. this would get people to the island on a low budget. People like myself work remotely and enjoy traveling around and have a cheap spot on the island to stay would help tremendously. There has to be a 10/20 acre lot for sale which could be used for this. I know alot of people wouldn't like this around there expansive lakefront homes but there is plenty of space on the island to accomplish this. Even allowing people to build a small 400sqft cabin might help (if builders don't charge an arm and a leg). Some of the tiny homes on trailers are beautiful and look amazing. Look at realtor right now and see what the cheapest house is on the island, most people cant afford that. people in cheaper houses spend money at local businesses just the same. The island has a great sense of community and that is very enticing to alot of people, we should help them overcome some of the initial hurdles. It could be, maybe create a voucher program with the ferry to allow people in need cheaper rides for Doctor appointments?

60. I think better internet reliability is a must for the Island for long-term survival. As the world continues to become more "online," this service is necessary. Affordable housing could mean townhomes/rowhomes for small families or apartments for individuals (either to rent or own). I note that many younger people who move to the island have had to leave because available housing has not been affordable, even while holding 2-3 jobs. I also note that some families have had to leave because healthcare/dental services for children is an issue, and it's too expensive and too hard to coordinate appointments across when multiple children require care.
61. Internet needs to be improved
62. The market is improving internet access. No affordable housing is crushing the island forcing many businesses to reduce hours. And it's making long-term residents move to the mainland. Consider reducing min sqft for apartments to 275-450 sqft to allow efficiency and 1 bedroom units to alleviate this problem also require any new units to have % of them dedicated to year-round rental. This would encourage construction because the developer isn't forced into 100% year-round rentals. Yes. Need high speed, affordable internet to attract and retain a population. It's critical. Affordable housing is required for the labor force. Continued improved healthcare including EMS is also critical. Internet reliability is a huge hurdle. I am in my 30s and own property on the island after visiting several times, and yet I find myself restricted in how often my family and I can visit due to the lack of reliable cell coverage and fiber internet. My career, as with many in 2022, offers me flexibility to work remotely, and I'd love to be able to spend many weeks or months each year working from the Island, but without reliable high-speed connections, this will be a restriction for me and for many others. Affordable housing: I'm not up to speed on the economic metrics of Beaver Island specifically, but I would target the monthly rent to be something akin to the Charlevoix County median rent from 2016-2020, which appears to be \$780/month. Effectively, I'd say affordable housing is something someone working 30+ hours a week at a local BI establishment could afford to rent, perhaps with a roommate. Yes, more affordable housing could be provided here. Healthcare services: This is also an area where Telehealth comes into play. For example, I see my therapist weekly via Zoom, but the internet reliability on the island makes that nearly impossible. Many health insurers and employee health plans are very tech/app driven and incentivized, so this is an area where a health center affiliation with a larger medical entity (hospital system, probably) might be handy.

63. Internet speed and reliability are very important to me. Affordable housing is needed for current older residents, but not to encourage others from off Island to come here for housing. Healthcare leaves much to be desired -- weekend health providers are needed, not just a phone system that doesn't always work or is not attended to. A resident doctor and dentist are needed. Faster and cheaper means to get to the mainland in an emergency are needed.
64. More research on grants and funding to improve our extremely poor internet and cell service
65. Internet unreliability is annoying but not a factor in my choice to be here on the island.
YES, the island needs more affordable housing, especially given the real estate explosion of the last year or so. We need the help in service industries on the island to keep Beaver Island a desirable place for visitors and residents, and those workers need affordable housing.
Healthcare will always be a barrier to living on the island unless the island can afford a state-of-the-art hospital with lots of specialists. That's not going to happen, so residents and visitors need to understand that.
66. I think the internet has become reliable, affordable housing sound great but who pays for it? Maybe subsidize travel to mainland for additional health care
67. Internet connection doesn't matter all the time. Affordable housing will continue to impact seasonal worker and young people. Health care as we age is a concern.
68. Internet reliability would be a factor if I began to work remotely. Affordable housing should be looked at very carefully so as not to deter from the natural beauty of the island. Healthcare services are just right for the community demands.
69. While the current situations with internet reliability, affordable housing, and healthcare services may be, at the very least, tolerable to current locals - it is also these current situations that are holding Beaver Island back. With further expansion and improvement of these subjects, more people will be drawn to the island. Professionals working from home, entrepreneurs looking to open a business, and even retirees could find much more interest with just these three improvements!
70. Affordable housing needs to be a priority for the Island
71. We desperately need affordable housing for year round residents. People having to leave the island because it is not available is not the answer.
72. Without fiber optic Network Beaver island's economic viability is at risk
73. All of these are factors for me to visit the island more often. I would certainly visit more if these were addressed.
74. All three are limiting factors with internet speed and reliability being the most important for seasonal and year-round residents as well as potential job opportunities for young people on the Island. Health care has improved greatly but is still hampered by lack of a full time physician and sufficient income for recruiting and retaining qualified providers. There's also a lot that isn't being done unless a few people take on new ideas and overcome resistance to change. Finally, there appears to be little if any planning on climate change risks that are already affecting the Island; that should be a high priority for any Master Plan.
75. Internet problems present a barrier to moving here and running a business Healthcare is an issue .. the Medical center has made moves that have made me loss confidence in their ability to improve and offer life saving care
76. affordable rents and zoning that allows for aesthetically attractive tiny housing are needed.
77. Home healthcare and elderly services are barriers to living on the Island. Land and home prices have increased too rapidly leaving lower workers unable to afford housing esp. in summer. Our internet is

poor and I would never suggest anyone move here to work remotely unless there is dependable reliable and affordable internet service.

78. When a \$40,000 electronic sign is more important than new medical equipment or competent personnel, we have a problem. The a member of the board is telling people that the health center needs a \$1,000,000 addition when we do not have a properly staffed health center, we have a problem, when the staff at the health center cannot properly transmit prescriptions to mainland pharmacies, we have a problem. I can go on and on.....but it will make no difference. Affordable housing is not a viable option for Beaver Island. Landlords are too greedy to pass up making 4 or 5 times the normal rent in the summer to provide affordable year round housing. A couple employers have taken it upon themselves to provide worker housing, but one of the employers has turned several properties into slum like appearances around the island.
79. Affordable housing is going to be reason that beaver island does not flourish in the next decade.
80. Internet is very important and it effects visitors and year round residents. More affordable housing for our worker bees seems like a need.
81. Broadband is vitally important for the cottage industry we desire. Affordable housing will require governmental funding to make it reasonable. Healthcare services should move toward off site evaluation through the internet
82. Healthcare on the island is a barrier to staying on the island. The rural healthcare facility could be better run, include doctors, and tie itself for an area medical facility.
Internet reliability is the number one determinate of people being able to get jobs remotely.
Affordable housing and a safety net of services are needed for any community to have compassion for those in need.
83. Yes internet reliability is a factor for me to live here. My career and business relies on strong internet connection. Affordable housing on Beaver Island to me means Islanders who live and work here can have a home they can afford, can support themselves and family in, and don't have to move out of when the tourist season starts or be forced to move off island because they literally have no where to live. We have too many seasonal homes that offer Airbnb-like (short term) renting and nothing for the workers here to provide services for those renters, along with land grabs by some to provide inadequate and expensive housing for those that do choose to stick it out and work here although most don't return. We need housing for our work force. The island cannot sustain itself with housing only available to the rich and the retirees and that is not the image we want for the island either. Healthcare services are a barrier to living and remaining on the Island. Expenses are only rising for healthcare and the cost of flying/boating off island to then again pay for lodging all to go to a healthcare provider is or is becoming a barrier for many islanders. We have many elderly islanders that need reliable and on-island healthcare services along with growing families and women who need their healthcare needs met without having the hassle of going off island. Many are forced to leave or have health needs go unchecked because the island does not have what is needed in terms of healthcare here.
84. Internet reliability is the main factor that will allow me and my husband to be able to move to the island full-time. As empty-nesters, we are looking to slow down, but are not planning on retiring for at least 10 years. Our work allows us to work remote, but high speed internet that can handle video calling is paramount. It is such a travesty to hear of people wanting to live on the island full-time but not having affordable housing to live in. I fully support more apartments and/or tiny home developments. I do feel that at some point the healthcare needs of an aging population will mean many will have to move off island to get the regular healthcare they need.

85. Yes. We used to have great internet access through Version in PSJA but not so much now. Why? There needs to be more affordable housing for summer and essential workers. Housing and regulations can't be based around real estate sales building summer homes. There needs to be affordable alternatives and options for campers/trailers. Healthcare services have been great every time we have needed them! (stitches, medications, consult on severed tendon). Healthcare services are definitely a barrier to living on the island. We spend way too much time on Internet accessibility when many of our establishments are not accessible to differently able people. It's shameful.
86. Yes, to all of these factors. Internet is an issue and I realize that this is an ongoing project but we need township support and funding as well as the community to help make the necessary improvements. Housing is a huge issue. We need to have housing available for summer workers. Should we look at other summer venues that bring in multiple workers for summer months - if we can't find the help among our local population. What does Mackinac Island do? Cedar Point? Dorm style housing areas? Healthcare is a worry. Our health center needs to have the ability to take care of it's community especially when not able to get to the mainland.
87. Needs better internet/ more affordable housing for low income families and seasonal workers/ need hospice and in home care
88. Need fast, reliable, low cost internet for all... public & private
89. Yes to internet. Re housing, I see it as our biggest need. Re healthcare, might be a barrier eventually for most retirees, but until then, we figure it out.
90. Internet with useable speed is very important and right now in 2022 not very good. Affordable housing is needed here. Healthcare not the best here. Dentistry almost nil and health center could improve its service.
91. Health care is driving the elderly away. The internet is keeping people from working here. Housing is a huge issue for workers.
92. Affordable housing will keep being an issue with everyone who wants a bundle from short term housing.
93. Yes, healthcare services are a barrier to living on the island year around.
As someone who works 3 months a year on the island, I find the internet to be very reliable. Community center needs a new modem!
94. Affordable housing for the workers on this Island means being built in collaboration with property owners, townships, grant writers so they are truly affordable
95. I support more affordable housing opportunities. Health care requires too many off Island trips.
96. Many folks are interested in living smaller. I'd love to see a reduction of the minimal square foot requirements in the R1 and R2 areas. Why is it possible to build enormous homes and pole barns, and impossible to live in more environmentally friendly and less intrusive ways? It doesn't make sense.
97. Health Care on the island is appalling! With an aging population on fixed incomes more services should be scheduled monthly for podiatry, dermatology, dental care beyond just cleaning teeth. Dental Clinics North should be replaced with a real dental practice. The health clinic needs oversight from a major medical concern such as McLaren or Munson. Medical professionals should sit on the board of directors. Definite barrier to living here. Reliable internet should be a given, island-wide. Many seasonal residents might consider living here if they had stable service throughout the island. Affordable housing means seasonal workers have a place to live whilst working here in the high season. Housing needs to be close to commerce. The Karnes subdivision would be an ideal place to consider as it is within walking/biking distance to town. This piece of property has sat idle since its inception.
98. island needs consistent reliable internet service.

99. I don't think health care services are that bad. typically we can have someone in the Charlevoix Hospital quicker than someone from East Jordan for example! Internet of course is a necessity as well as affordable housing!
100. More housing. Maybe allow a place for small house for 1 or 2 size families. Or summer help.
101. Internet - no impact. Affordable housing - huge issue. Healthcare has gone down hill the past few years. Becoming an issue for many.
102. I do believe that health care services are essential to the island.
103. Internet reliability is important- it is like yesterday's land line telephone- your connection to the world. Must have affordable housing for working age people to be able to live on island to support basic functions. Consider looking at models in other tourism based economies (for instance, Door County, WI) where similar challenges exist. Maintaining EMS and nurse practitioners important in considering visiting or living on island. PA or physician would be even better.
104. I would visit more often if there was better/reliable internet and a place to sit and work at while on the island.
105. Internet reliability and speed is one of the biggest impediments to the islands ability to compete economically.
We also need more affordable housing for full and part time resident who want to live and work here.
106. Healthcare is an ongoing problem. Internet reliability is a nuisance. Affordable housing is a huge issue across the country.
107. Internet reliability is central to all needs and services on the island. It should be the priority for the future of the island. Bond issues needed to support.
108. I'm glad the internet isn't too dependable if it keeps too many people moving here year-round. But we need affordable housing for workers. Karnes Subdivision could be purchased, 30 lots left, and developed. Could be a combination of tiny homes and almost dormitory-style buildings for student workers. The old lumberyard building and the 2 houses by Summer House on Donegal Bay Rd could be considered to make into rooming homes. The Brother's Place, with some repairs could be retrofitted into a rooming home. All the businesses who hire summer workers could transition their apartments above into worker lodging, instead of making the big bucks on weekly rentals.
109. Affordable housing encompasses not just low income, but "entry level" people. We need housing to provide places to live for year round residents and seasonal workers. We can't have a population made up entirely of retired people, they aren't the ones doing the service work.
110. Affordable housing especially in the summer months would provide more workers for local businesses who otherwise have to shut down hours or days because of lack of workers.

Built Environment

Trail Management – differentiate between motorized and non-motorized trails to increase user safety and minimize impacts to natural environment

1. ORV's only on trails and two-tracks they don't damage
2. Trail improvements are VITAL! 90% of all new visitors are to BI for nature, trails and non-crowded areas. Signage. Safety, amenities at trails are vital improvements.
3. ORVs on roads with on road requirements
4. Limit ORV trails and traffic on the island! Protect and enforce ORV restrictions! (2)
5. Limit ORV trails and traffic on the island! Protect and enforce ORV restrictions! (3)
6. Limit ORV trails and traffic on the island! Protect and enforce ORV restrictions! (1)
7. High powered ORVs are wrecking gravel roads at curves and spreading too much dust onto others on road – eg: pedestrians and bicyclists
8. Increase in ORV and their speed on trails and roads
9. Limit ORV traffic trails and speed. Don't let ORVs ruin our beautiful trails and beaches.
10. Minimal ORV and trail
11. We can't stop ORV's on two-tracks but we should build more walking biking trails that are not suitable for 4-wheel vehicles (+ green dot = comment seconded by another person)
12. Distinctions between hiking and ORV trails – we have the capability to provide both
13. Keep trails clear of fallen trees
14. Don't put up a bunch of signs it takes the fun out of using the map
15. Signs are clutter 😊
16. Boot scrapers at every trailhead
17. More trails available to motorized vehicles. Helps maintain the trails at the same time. Tourism opportunities as a destination to use the off road trails.
18. ORVs to stay off walking trails. Lake access sites look good.
19. Any biking, hiking trail, birding trail would be a plus.
Think motorboats should have a no wake or low speed limit. And no jet skis on inland lakes
20. Helping clean up the trail leading to the virgin woods where you turn on the road with the sign that says "Heres Thuja" or something to that affect off east side drive. CMU stated and showed me on a map roughly where this patch of virgin woods was, but the trail was deteriorated and I got lost for a few hours.
21. I actually think the trails are good, especially by Barney's Lake. At a minimum, they should remain relatively clear, especially of fallen trees and poison ivy. The top priority for the built environment to be sure that they have as little impact on the environment as possible - so keeping dust levels down and making sure we are not removing too much foliage for trails.
22. Acquire land to to connect trails
23. Trail improvements I; bike lanes; slow the traffic down with a traffic study for Main Street. Need to ensure pedestrians are safe
24. Trails need to be maintained for hikers only, and some need to be offered for and/or restricted to off-track vehicles (but not all). Access to lakes is fine as it is, but lakes could be stocked by the DNR.
25. Bike lane on Kings highway

26. My top priority is to limit the types of ORVs and their uses. 500cc Razors do not need to be destroying the beaches and dunes or racing down the roads. These need to be managed. Trails only need to be maintained as access. Foot bridges need to be maintained and fallen debris needs to be removed. Anything else is part of the adventure of the ever changing and growing landscape.
27. Support BIATA Trails master plan
28. Beaver Island needs better trails to encourage tourism and for local enjoyment. We have a beautiful island -- show it off.
29. Townships to address water trail master plan. No work has been done. Preservation of our natural environment is not being addressed by the townships or commissions.
30. Priority. In a soon future I would like to see a complete and expansive network of bicycle/ebike trails across and around Beaver Island. Not only would such trails encourage much needed (affordable!) additional forms of transportation, but they would be a significant draw for more tourism and subsequently greater economic development. Existing trails could even be paved, such as the Kuebler/Hidden Valley trail! Roads should be kept narrow or as they are - making roads wider only induces demand for traffic and higher speeds. Tree cover and narrower roads keeps dust down and is in fact, safer! — it encourages drivers to be more cautious and attentive!
Other improvements could be beautification throughout the downtown area. Install sprinkler systems to keep grass green along the road, make actual parking spots (painted lines) to keep people off grass, designate boat trailer parking areas, and establish ordinances prohibiting any “junk” to be seen from street view.
31. trails receive a lot of damage from vehicles so that person may also need to have resources to repair that damage. I think the island's water resources are fine with the addition of the Beaver Island Water Trail. Someone does need to check and maintain the pull-in/camping sites, though. Top priority? More restaurants NOT owned by one person. Don't allow the restaurant monopoly that is occurring to continue. It could really hurt tourism.
32. Trail improvements: more signage/way finding would be ideal. The Donegal Bay biking trail is great, but beyond that I feel like I'm just wandering around, hoping to find another trail.
Accessibility to water resources: more clearly available rentals of boats, kayaks, etc. Wouldn't mind seeing more options to rent a boat or get a tour of the archipelago. I think of how well signed various options are in Leelanau County towns and tourist points, and think we can do a better job of that here.
Built environment: the airports are probably the most confusingly under-built. Even paving the road to Welke airport would be handy, and the municipal airport feels like it's lost in a field.
33. Trails that all connected in the state forest. Hiring someone or at least have an account to pay for the fuel that everyone uses to clean the trails themselves.
34. Better walking/birding trails makes our beauty shine for everyone.
35. Open the Kuebler trail for everyone. Expand the bike path
36. I would like to see more loop walking trails with updated signage and information kiosks (boot scrappers) at each trailhead, designated motorized trails so there are separate trails for hiking and ORV use, along with more propaganda towards our water trail. I would like to see more fishing docks around the island to improve accessibility to the Island's water resources and improvements to the public boat launches - with boat cleaning stations/capabilities provided. Top priority related to Beaver Island's built environment is sustainable and educational accesses to our natural resources, be it trail improvements, fishing docks or nature parks, to respect them and create an eco-friendly tourism base for the island.

37. I would love to see bike paths on all paved roads both for safety and promoting biking. Road maintenance is and will always be a priority on the island. Without well maintained roads, those who live outside of St. James can be negatively impacted.
38. An Island trail map for ORV would be helpful.
The built environment could use more affordable housing and flexible housing codes
39. Bike bath completed to Donegal Bay
40. More bike paths. Make the island less dependent on cars and ORVs.
41. Limit motorized land and water vehicles. They are destroying the island environment.
42. ORV enforcement needs to be done and kept off foot trails.
43. grade separated bike path along King's Highway. More bike paths in general. continued good maintenance of existing roads to keep smooth, dust managed
44. Improved Ferry service and improved trail heads with better signage and maps.
45. Bike trails everywhere that people ride bikes.

Inland Lakes, Community Pool & Facilities

46. Build temporary office and maker space. A maker space with temporary office space could be used as CNZ? Space for school during off season
47. Sidewalks ALL through town (Emerald and Whiskey Point lighthouse)
48. We need a community gym & if possible, pool that can be used in winter
49. Indoor public pool for year-round swimming
50. Indoor public pool year-round
51. Community Pool so kids get swim lessons before going to the lake
52. We need a new and effective boat landing at Wagner Campgrounds
53. Fulltime mechanic / garage repair for auto and marine repair
54. Top priority: make signs about littering on beaches
55. *Dust Control*
56. Biggest problem is inadequate, consistent dust control all island roads, especially west side roads which is a terrible accident waiting to happen
57. Posted speed limits throughout the island – lower than 55 mph (2)
58. Posted speed limits throughout the island – lower than 55 mph (3)
59. Posted speed limits throughout the island – lower than 55 mph (1)
60. More dust control
61. Dust control earlier and more often throughout season
62. Dust control on roads. Huge clouds of dust flying over my house on Sloptown
63. Build fishing piers in the harbor and major inland lakes.
64. Some water accessibility trails are poorly identified, particularly on the west side of the island.
65. Parking/dock facilities for inland lakes are important goals along with appropriate signage. A top priority for built environment is affordable workforce housing.
66. Bringing services, businesses, and resources to the south end is critical.
67. I use the water for fishing, anything to help with this.
68. The top priority is housing many businesses are reducing hours to many are forced to move off the island due to weekly rentals and little year-round or lower-income housing. Possible solution reduce sqft for apartments to allow efficiency and 1 bedroom units.

69. Limit use of inland lakes. 11am-7pm noise/speed vehicles on Lake G. Ban individual use of fireworks on Beaver Island.
70. My priority is to create community gardens and education about the flora that's available to residents and visitors. Also it is very important to me to work together on improving our trail system.
71. Parking for vehicles with trailers and a boat launch on the west side of the island
72. Infrastructure improvements are very much needed, but all installations should use the most updated technology to ensure they are ecologically sound and will last for many years through climate change impacts.
73. Improved access to high speed internet, regular water quality testing for well and public water sources.
74. The townships have done a good job securing land around the island for access.
75. 1. Create in each township a parks and recreation committee with Island residents (seasonal or permanent) participation to address these and similar issues and make recommendations to the townships. 2. Expand the NLMIC's mission to cover natural and cultural resources for non-DNR owned archipelago property. 3. Create a similar archipelago wide collaborative to cover the built and social areas (i.e., all the governance areas that are not natural or cultural).
76. Access points on inland lakes and beach areas for launching non-motorized transports. Keep inland lakes slow, no-wake environments.
77. The townships have done a good job with docks....
78. There is plenty of access to the Island's water resources.
79. More public access to the shoreline.

Economic

80. Top priority for BI's built environment is that we strive for local work and jobs
81. Somehow limit off-Island big investors to buy multiple properties for use that increase cost of living and decrease affordable housing, etc.
82. More trails available to motorized vehicles. Helps maintain the trails at the same time. Tourism opportunities as a destination to use the off road trails.
83. More rental housing year round, seasonal employees, low income to attract families
84. Fiber to every home
85. he residents /seasonals who work and live here need to be a priority. Tourists and renters always take priority. Living next to rental properties takes away from the quality of life. Late night partying, fireworks, horns honking, multiple cars, all takes away from the peaceful place we once came. Motels are required to have follow health codes and the rentals have no rules.
86. More basic specialized services. - auto and marine repair. - a pharmacy housed in the health center- appliance service and repair. - a few more restaurants

Misc

87. Sustainable, renewable, energy efficient & environmentally blending in structures
88. Sensitivity to eco-system and enforcement of laws/rules/guidelines
89. Honestly, maintaining as is.
90. The island is already over developed and losing its special charm
91. No particular input
92. It is fine rustic.
93. All good things to pursue!

94. Top priority to built environment is to preserve the historical character of the island, and limit the number of building permits allowed for new houses. Could even require new houses built to have some historical details.

Sustainability

1. No large wind anything
2. Agree! Yikes saw this out west- At night all those red blinking lights on top are horrible!!!
3. Create jobs for people by having a crew that regularly cleans that up / make a “community clean up” day once a month or so where everyone gets together to help clear downed trees.
4. Hunt for federal incentives for both township and individuals to subsidize independent energy production. CEO thermal / wind / solar / help individuals apply help individuals find contractors.
5. Energy conservation and renewable energy for the island
6. Increase accessibility of solar and geothermal to homeowners (1)
7. Increase accessibility of solar and geothermal to homeowners (2)
8. Net positive energy / water / development / ordinance
9. Let’s make Island solar and wind!! And residential alternatives. More EV cars. Need fast charging stations.
10. With all of the dead and downed trees and all the brush, our island would be destroyed in short order with a substantial fire! The winds make it even more dangerous
11. With all of the dead and downed trees and all the brush, our island would be destroyed in short order with a substantial fire! The winds make it even more dangerous (1)
12. With all of the dead and downed trees and all the brush, our island would be destroyed in short order with a substantial fire! The winds make it even more dangerous (2)
13. With all of the dead and downed trees and all the brush, our island would be destroyed in short order with a substantial fire! The winds make it even more dangerous (3)
14. Water quality is a high priority, but what are we doing to educate owners / renters on septic care? Do people know what not to put in their systems? Are we testing water quality and identifying problem areas? (1)
15. More on-island food production. Farming. Education on gardening (1)
16. More on-island food production. Farming. Education on gardening (2)
17. Especially if we want to promote off-season visitors, we need to develop and provide awareness on all types of emergency preparedness. How can everyone be prepared? What should they do in a variety of medical, weather, etc. events?
18. Renewable energy strategies island wide
19. We need an incident command station for search and rescue
20. Not prepared for Covid emergency transport. We were denied leaving the Island on both airlines and boat. We were honest and said Covid positive
21. High water feeling? No choice- the lake levels are not about me and choices
22. 2019-20 high water did serious shoreline damage to trees and vegetation that is gone forever (1)
23. 2019-20 high water did serious shoreline damage to trees and vegetation that is gone forever (2)
24. Solar farm. Discounts to those who invest in it.
25. Emergency planning. Need an Island manager – someone needs to take charge for island emergencies
26. Beach clean-up! From high-water debris.
27. Community compost to build fertile dirt for gardens and food sustainability. (1) Fish debris can-be added to this.
28. Monthly sustainability practice forums to discuss. Research based practices of sustainability.

29. I would like to see the island taking steps towards more sustainable, independent, and reliable energy sources like a community solar array, hybrid ferry service – actions that will lead us not to be so dependent on fossil fuels and the mainland (1) Of course it'll be decades off if we have that mindset and never start
30. I see "energy independence" as decades off. Don't expand effort that should be put on higher priority activities. We should start today.
31. Solar energy for electricity. Community solar farm. Plan for 5 megawatts (1)
32. Solar energy for electricity. Community solar farm. Plan for 5 megawatts (2)
33. Need more readily available transportation in case of emergencies that need to be taken care of off the island. Wind turbines / solar panels / sustainable energy is a must. Red lights on them are annoying but a small sacrifice in terms of the big picture.
34. Community garden / gardens north, mid, south or central local new garden club has begun "Island Roots" Every other Tuesday 7pm and Fresh Air.
35. Crucial to our survival as a human race!! Light pollution prevention is Cost Effective! Saves money conserves energy!
36. Home assessments provided to ALL on the island to determine their electric efficiencies and how they can get supports to improve.
37. Check wind /solar for info and input on solar energy (1)
38. Check wind /solar for info and input on solar energy (2)
39. Emergency services work wonderful on the island. Very important to maintain what we have.
40. Not at all prepared. Would love to have a mock evacuation or exercise . Organized solar please!!!
41. Promote alternative energy sources such as geothermal and solar.
42. Promote alternative energy sources such as geothermal and solar.
43. Water levels cycle.
44. I think we are fortunate to have well trained emergency personnel on the island. Weather becomes the problematic piece in getting off the island for an emergency situation. The high water level adversely affected waterfront residential properties with high cost remedies.
45. I don't even know what you mean by an emergency in the above question. Fire? Pandemic? What kind of emergency?
46. I am terrified of a fire emergency on the island which is due to treefall EVERYWHERE, brush, and unkept land that is prone to fire. We need fire breaks up and down the island to mitigate this. We must also encourage and incentivize alternate energy like solar and wind. BI is almost 100% dependent on the State and no one from outside BI seems to care about it. We must become more independent to survive and thrive.
47. The high water has created dunes that are now being undercut just by the wind. Unaware of any plan in case of an island emergency.
48. Good. Solar is getting better and better everyday, and this is something we could help homeowners slowly over time. Especially with a program where we could help sponsor an electrician to do the initial work and homeowners help pay for panels. Made people realize that houses shouldn't be so close to the beach without protection.
49. I do not feel prepared if there is a forest fire on the island, unfortunately. I think better (or enforced) fire-prevention education and laws need to be put in place such as no fireworks in residential areas by individuals and burn pit/fire pit regulations would be a good start. People don't know that juniper roots run for hundreds of feet underground and that a makeshift fire pit on one part of the island may cause a

fire elsewhere. Solar storage is a possibility for energy independence - we get so much light during the summer hours. Incentives for residential battery/solar would also be smart. McDonough's has solar panels, which is great. As for the water levels, it's hard to say as I was not personally negatively affected.

50. Limit electric usage
51. Worry about possible forest fires and limited medical care. I think the markets will correct the energy issue as more ad alternative energy. Maybe BI can give incentives to off-grid homes and not require a grid hookup on new builds.
52. Improves access to sustainable, affordable clean energy is needed. Education and tax incentives to reduce dependence on fossil fuels. The high water levels made us realize how vulnerable we are as a community!
53. Overall, I feel okay in the event of an emergency on the island. The fire departments/EMS are strong. For energy independence, I think we'll have to think hard about what we're willing to build infrastructure wise on the island. Wind/solar/hydro generation are great, but are we willing to build out that infrastructure on the island, or are we proposing encouraging each property owner to build to support their own needs? The high water levels definitely impacted the island, but for most lakefront owners who are set back according to the zoning ordinance, I don't think it was as big of a deal.
54. A major forest fire would be devastating, but I'm not sure what improvements need to be made there -- are we actually prepared in the event of a large forest fire? I would like alternative energy sources, especially wind in off-shore areas of N Michigan; solar is still very expensive, too expensive, even with governmental discounts of up to 30% (recent experience here!). The water high water levels are geologically cyclic, and although devastating to some places, they must be expected and planned for -- no building so close to the lakes is one thing!
55. We should look into community solar. Every home that can add small wind turbines should be allowed do so.
56. I don't know how well-prepared I am. I don't have the imagination to imagine what type of emergency, short of Line 5 breaking, that could affect the entire island. Subsidies for solar and wind power could help achieve energy independence, but the sun is unreliable in the winter, and no one wants to look at wind turbines. Perhaps subsidies for geothermal energy could also be provided, and GLE could offer discounts for those with energy-efficient system. Right.... High and low water levels have occurred on the Great Lakes since they formed as the glaciers retreated. We need to learn to live with that. I would like to see local realtors inform prospective buyers about what might happen to the lake front property they buy during high water years (like the shoreline might erode away and your house will end up in Lake MI). Ignorant buyers buying during low water years are probably clueless.
57. What kind of emergency? Thinks like spoiling the looks and feel of the island with wind farms that expend more energy to make than they produce in a life time and enriching corporations and individuals? No I am against that. The water levels will always continue to rise and fall. As the info by the big rock states, at one time you could walk to the mainland. Man is foolish to think he can control such things
58. Thank goodness for the USCG, to be able to helicopter in during bad weather. I do not want to see a bunch of windmills on the Island. Lake lev changing are cyclical, we need to understand that they are not changing.
59. The island is better prepared than it was 20 years ago. We have headed in the right direction. Energy independence will take more research. I believe using tidal and wave generators on the west and south

west portion of the island could actually generate enough power for the whole island. High water levels brought a new reality to waterfront home owners. But, it is nature making its gestational changes.

60. I feel no need for an "emergency evacuation" plan, as I perceive no current threat whatsoever. I feel prepared, in other words. Perhaps instead of agricultural fields, which do not supply the island with enough food anyways, the cleared land could be used as solar farms in order to provide the island with energy. The high water levels did little in my eyes other than hurt tourism. Beaches were smaller and there was increased danger throughout the surrounding water due to now hidden rocks, etc. and perhaps damaged shoreline habitats, otherwise very little permanent damage.
61. Support DOE Island sustainability energy initiative
62. I could foresee a disaster leaving many residents stranded unless a thorough, well-partnered emergency plan is in place. Funding is available for energy projects and it will just take time and citizen participation to incorporate more solar, geothermal, and other green energy projects.
63. The Island is poorly prepared. It was a miracle that one person survived last year's plane crash, and miracles are not an emergency plan. The Island should offer property tax breaks for people who invest in solar and wind energy, thereby decreasing the number of households drawing power from the grid. The Island needs to know a lot more about the impact of climate change on water level and water quality as the Michigan population grows during expected mass migration from southern states and the need for fresh water becomes a vital national and international crisis.
64. The 2019 - 2020 water levels provided a reminder to build homes far enough away from the lake! The island should have an island energy program for needed fuel to prevent the residents from suffering economic swings that can better be managed at a community level.
65. We need better planning for high water and storm surges. Set backs are inadequate in the island's high risk erosion areas. We have great fire and ems personnel but they are aging out. Forest fires with climate change could overwhelm our resources. Tax advantages for geo-thermal and requiring all public buildings be retrofitted or built with air-conditioning and/geo-thermal heating. Industrial wind farms on the islands could spell a disaster for migratory birds.
66. Solar! We should be mandating all new homes have solar, wind, geothermal or any other form of green or renewable resource.
67. No ideas.
68. I do appreciate the air lift capacity of the region. I do not feel the rural medical clinic can handle basic emergency issues. wind solar etc for electrical generation need to be able to be sold to the grid. this cooperation will enhance energy independence and provide fossil fuel alternatives to people on the island. electrical charging stations should be available as well.
69. I feel we can make great improvements to our Island Emergency Plans, especially in terms of outreach and community resources. A community solar array and new hybridized ferry are two projects that could help us achieve energy independence. The 2019-2020 high water levels affected the island with more erosion to which many resorted to seawalls that are damaging to the neighboring shorelines when there can be better options to protect a shoreline property.
70. Living on the south end of the island does concern me with respect to any emergency - personal or natural. The time it takes to get to the south end is significant, impacts the EMS response. Establishing an island solar farm to create our own power should be a priority. I'm not well versed in the effects of the high water levels.
71. Well prepared for an emergency if you expect some degree of self reliance. Energy dependence should be achieved through solar or other silent production. In addition to the dark night sky is the silence of

the island. The water levels are part of a 26 year cycle that many islanders and summer folks have been through before. Shouldn't have been a surprise.

72. I do not feel like we are prepared if we had an emergency. What if there was a forest fire? If we are prepared, I am unaware of what strategies would be implemented in case of an emergency. I feel that homeowners and businesses are still recovering from the high water levels. This was devastating for some homeowners.
73. Not prepared for emergencies, Have an Island wide drill! Promote incentives to residents for solar & wind Offer fast charging stations for EVs.
74. No input
75. Fairly well prepared for an emergency but no way to get off the island if no boat/plane. Energy independence can be expanded with solar, wind. Tax credits are good. We used to have an electric car show here but when the organizer left the island, the show quit. Always good to see what is available.
76. We have no emergency plan. We're screwed if something bad happens. GLE has a power plant that usually sends to the mainland. What do we care? High water? I put in a breakwall. It is what it is.
77. Nature is amazing. People build too close to the water.
78. The high waters were a wake up call for those properties, subdivisions and our zoning that did not adhere to the 100' setback from the high water mark.
79. The existing emergency operations plan needs work. It needs to become integrated in the community. Forest fires are potential issues given our entitled visitors and some residents' poor behaviors, let alone having lightning strikes.
80. There need to be more sensible regulations on building on the shoreline. Too many homes have fallen into the water or require intrusive and ugly sea walls to remain in place. Discourage building close to the lake.
81. 1. Emergency preparedness is necessary and should be implemented immediately. 2. Cooperative efforts should be addressed in obtaining affordable alternatives to oil/gas as primary energy sources. 3. The effect of the high water on the island could have been reduced if some property owners had adhered to zoning ordinance restrictions on building too close to the high water mark.
82. High water, lessons learned, we should have benchmarks from this going forward! Most houses that were affected were built before the 100' setback rule came into play in 1974. I think emergency prep is in good shape! Drill a natural gas well!
83. Mother Nature always has her own way to run the world.
84. Oh my! Not prepared at all! High water levels! So thankful they have gone down for those who were affected!
85. solar technology may be attractive to help power the island. High water battered the shoreline. Rigid shoreline armoring (seawalls) may negatively affect adjacent properties, habitat, beach replenishment. More study or education on alternative practices (biowalls, dune restoration) might help mitigate some damage during the next high water event.
86. Island wide cell phone coverage would benefit in case of emergencies 100%!
87. I think the high water levels made residents aware of how fragile the island's ecosystem is and the necessity to take steps to protect it.
88. Generating energy on the island would be a wonderful task. Not reasonable to expect energy independence, but getting to 50% of our own electricity generated on the island via solar or wind is a reasonable goal.
89. Wind energy needs to be explored seriously and not discounted.

90. Not prepared to speak of. We need some energy companies to help us move into a greener, cleaner century. Build a solar energy electrical power plant. Have some island backup not tied to the large generators. Get some grants, have an energy consultant come advise people about their homes, and help them schedule the work. The high water levels have affected many cottages near the water.
91. We have an aging volunteer fire department. We need to emphasize recruitment and support of these volunteers.
92. Achieving energy independence should be a huge priority. Reducing the carbon footprint of the transportation to and from the island should be considered as well. For instance, if rental cars were more affordable on the island, perhaps the ferry wouldn't need to carry so many cars, thus wouldn't need to be so big, and thus wouldn't need to use so much fossil fuel. Or maybe a hybrid (using some renewable energy) ferry could be considered.

Land Use Planning

1. Protect critical dune area especially “Dead End” misleading trail. This is private property. No trespassing signs ignored. Four wheelers run wild there. Also, it is a nesting place for piping plover.
2. Make map more accurate. Public open space shouldn’t include PSJA land on west side of Font Lake
3. Affordable workforce housing would be great but I would like to make sure that there is something in place to prohibit the outsides and yards of all these small units from being stacked with everything that they can’t fit in their tiny houses!
4. No uncontrolled growth
5. Build affordable longterm rentals
6. Rezone Wojan subdivision for housing
7. Keep our lakes undeveloped ~ Lakes for all not the rich few who can afford lakefront- public access
8. All eco-sensitive areas protected ~ for themselves, for biodiversity and that is a big reason people come here.- natural resource conservation
9. Housing close to town for ease of worker access (1) affordable housing
10. Housing close to town for ease of worker access (2) affordable housing
11. Housing close to town for ease of worker access (3) affordable housing
12. Affordable housing should be near the harbor where more jobs are. Green energy facilities should be in areas of highest efficiency.
13. Cultural sites should be added to “sensitive features” on our LUP map and should be protected from development (2) conservation
14. Cultural sites should be added to “sensitive features” on our LUP map and should be protected from development (3) conservation
15. Cultural sites should be added to “sensitive features” on our LUP map and should be protected from development (1) conservation
16. Protect sensitive areas (2) natural resources Conservation
17. Protect sensitive areas (1) natural resources Conservation
18. Protect sensitive areas (3) natural resources Conservation
19. Determine what a “vegetation border” is with experts & then talk with public on what it will mean. How big are they? What types of vegetation? What will they prevent in terms of development? Generally, in support but nervous on lack of knowledge / specifics.
20. Keep the woodland spaces natural. Keep trails clear of fallen trees – but natural.
21. What is the Master Plan’s commitment to research and prepare for the impact of climate change, especially climate migration this is going to be a huge problem.
22. Housing in Karnes Woods.
23. Green energy space near the baseball diamond
24. Build in Karneq subdivision for workers. They have 20 lots left \$300,000 for all. Zoned commercial residential.
25. Locate affordable housing close to town- low cost transportation.
26. Green energy- out in woods not in town
27. Climate Change= forward thinking ideas need to be brainstormed and developed- it's not going away (2)
28. Climate Change= forward thinking ideas need to be brainstormed and developed- it's not going away
29. Climate Change= forward thinking ideas need to be brainstormed and developed- it's not going away
30. Housing should be in a central and walkable location to areas. All areas should be protected

31. Some housing on Buff-Kett Roads.
32. Fix the roads on property lines so roads aren't slicing off bits of property. Poor planning to start with.
33. Affordable housing on North end near town
34. Workforce housing should be built within one mile of town.
35. Ecologically sensitive areas need to be protected. Green energy facilities located near the generators.
36. Affordable workforce housing should be located close to town. Green energy facilities should have north-south-and middle locations to provide for all island property owners. Protection for specific wildlife should be taken into account.
37. Workforce near town makes the most sense, as that is where most work will occur. Summer options may be different, but suspect that it makes little sense to build affordable housing only for summer.
38. Makes sense to build worker housing closer to St. James, but let's not forget the South end, where most open land is located. The areas around Lake Genasereth and south of it should also be maintained to promote wildlife and protect natural resources.
39. Housing should be near town. Then transportation for workers would not be an issue. Any area now protected should remain protected. Whatever can be added to the protected areas is a bonus. Heard wind turbines kill a tremendous number of birds and they are also very loud
40. -No preference, land is available everywhere. Everything that is now, not sure what else to add. West side drive has alot of availability.
41. State/DNR/LTC-owned land should be and remain protected, as should Miller's Marsh. Affordable housing makes sense in St. James, and Peaine Township where it borders St. James as its closest to living resources. As for green energy facilities, the location depends on the energy source, but the Island should be open to having more than one facility in order to ensure efficiency. Engineers would be able to point out the best locations.
42. St James seems logical for more affordable housing I have a 6.5 a property I would like to put apartments on.BI needs to protect what makes BI BI. Green energy should be on every home.
43. Housing should be near town so it's walkable to local businesses. Green energy can be further out of town away from houses. Continue to protect lakes, shorelines, wetland and forests
44. I would focus housing and commercial development on infill lots in the greater downtown area. Lots along Back Highway, for example, could be strategically built out to handle new development. Affordable and workforce housing should be built near town as well, and there are plenty of areas where this could feasibly happen. I would target areas near the gas station intersection or west of town towards Donegal bay, or perhaps any property out toward the point.
45. Green energy facilities remain largely based on what the island is comfortable with. How big of facilities are we talking about? Ecologically sensitive should remain as is. Continue to protect the wetlands and shorelines of the island.
46. Slow growth on Beaver Island. This is our chance to keep the natural beauty which is why people visit.
47. Any affordable housing needs to be close to town, obviously. All ecologically sensitive areas must continue to be protected and monitored. Green energy should happen in the sense of wind resources and solar, but the cost of solar is still too high for an average house.
48. I think affordable housing should be located near the Health Center/Forest View. That's close enough to town for residents to walk or bike to their jobs. And what about the Karnes Dr. area? Nothing has happened there, and it's very close to town. The entire SW end of the island should be protected as the last wild area on the island. ALL dune areas should be protected, and houses should not be allowed to be built next to or on large dunes, such as Mount Pisgah. Egg Lake is a gorgeous example of a northern

bog/fen, and it should be purchased and protected. Perhaps a standing committee of knowledgeable volunteers could be created to recommend and inform the townships of ecologically sensitive areas that come up for sale that should be protected. I don't have a strong feeling about where green energy facilities should be located other than NOT in ecologically sensitive areas!

49. What exactly are green energy facilities? The ones I see are truly a blight on the environment and are mostly virtue signaling pieces of crap that take more energy to construct than they produce
50. Affordable housing should be within walking distance of town. I'll defer to the ecology people. If you mean a solar farm, out in the country.
51. Affordable housing should be located near town and major roads. Preferably off Kings Hwy. The north and northwest portions of Lake G should be added to the sensitive areas. Green energy should be located to the west and southwest portions of the island utilizing helical wind turbines and tidal generators.
52. Affordable housing should be located in St. James! There is ample room for development, especially mixed use development in the downtown. Tourist shops and commercial stores could open at street level with affordable apartments or condos above! This would help fill the empty lots and lack of ANY density. Affordable housing should NEVER be away from town or amenities and services. It creates a need for people to drive everywhere they have to go and causes lower income people to lose additional money through gas and car payments, while creating more traffic and congestion on our island roads! The west side dunes area, areas surrounding creeks/rivers, wetlands, and mostly the entire forest on the south side of the island should be protected. Development should mostly only be in town or along the Lake Michigan shoreline
53. Housing should be near town
54. Acre near Forest view senior housing
55. Expand ecological protections throughout the island. Green energy facilities could be located near the south and east parts of the island.
56. Not enough information is backed by solid research for me to comment.
57. The Northern Lake Michigan Islands Collaborative (NLMIC) has identified some of the key areas on the large island for ecological and cultural protection. Add to these areas, and include locations identified by the LTBBOI Natural Resource Dept for the outer Islands. Green Energy Facilities can be located near the old landfill, on those private family and trust lands where the owners may seek the financial benefits from these facilities, and on any open public lands and building rooftops that are deemed suitable.
58. Affordable workforce housing needs to be created near town for transportation opportunities. Shorelines-Lake Michigan and interior lakes, wetlands, dunes, creeks, and vernal ponds. All of the outer islands should be protected by placed in public domain. Which type of green energy facilities are you talking about?
59. Affordable housing goes in the Karnes subdivision. Green facilities should be in every new home. For the general public it could go out behind the transfer station. At the minimum all public buildings should be green. Then local businesses. Then homes.
60. Affordable housing should be near the work so people can bike or walk to work. Near town makes sense. Protect (and expand if possible) all existing preserves. Green energy along Kings HWY in open areas?
61. Affordable, workforce housing should be located closer to the Harbor area where more jobs are present and within walking/biking distance. All wetlands/riparian areas, threatened natural communities, high conservation priority areas, more shorelines and dune areas should remain and be strengthened in their

protection. Only about 2miles of our Beaver Island shorelines are protected from development- as shorelines are the most threatened, critical to many species- threatened and endangered included, and abundant here on islands, we need to establish in our Future Land Use Map, Master Plan and legislature to conserve, protect and enforce shoreline preservation beyond just "the beach", realizing that this natural community is not an easily drawn line that's separated from other areas and that there is more value that real estate for this community.

Green energy facilities should be located in Peaine Township in an area where we can grow in the future to meet energy demands as we become more energy independent, keeping in mind other businesses and property owner needs. Culturally sensitive sites need to be protected both physically and with our laws/ordinances, with special consideration towards sites on private property. These sites include the Stone Circle, the Garden Island Native American Cemetery, Bald Eagle nests and other threatened, endangered and protected species, burial grounds, ceremonial grounds and many more. I suggest expanding "Sensitive Features" beyond just riparian areas and adding culturally sensitive areas to that distinction on the Future Land Use Map. We need Future Land Use Maps for the outer islands.

62. Affordable workforce housing would be the most useful closer to St. James, and likely easier to construct/maintain. That said, anywhere on the island that could be designated as residential should be considered.
63. Affordable workforce housing should be close to town and businesses for walking/biking. Green energy (solar) can be located in the open fields in the center of the island. Wind energy should be avoided as it detracts from the natural scenery and sounds.
64. I think affordable workforce housing should be in the Karnes area or somewhere near town. Some place where it's not too far for workers to commute on a scooter or bike.
65. Affordable housing should be near town for workers are walk/bike to work. All state land/ parks should be protected/
66. I will start with I am not familiar with the Wojan Subdivision. If zoning is an issue with this property perhaps it should be rezoned to make the land usable.
67. Housing near town, allows workers to bike to work. Preserve wetlands, woods, water. Solar on roofs, wind in Lake
68. No input
69. Wetlands and bogs need to be protected here. No filling in them. The bogs are a natural resource gem and should not be touched. There should be teaching about runoff into the lake to protect the water quality. Buffers are good. Sand dunes need to be protected. Habitat for the Piping Plovers and other endangered species need to be protected.
70. Indian point or a farmers unused field subdivision.
71. Such housing should be near town, but somewhat screened from the roads. All ecological properties (public or private) should be protected.
72. Affordable housing should be located in St. James Township near the port and should include bike paths and sidewalks to reduce dependence on cars. The nearby R1 and R2 areas should also be revised to reduce minimum square foot coverage and to allow smaller homes.
73. 1. Close to town. Karnes subdivision could be rezoned/repurposed to accommodate affordable workforce housing. 2. All shorelines should be protected and free of invasive species. 3. In areas where green energy can be accessible to the majority of islanders.
74. Convert a part of Port St. James to tiny house and affordable house zone! PSJ are stakeholders too and it's time they step up and participate! Development out there has been so slow and now the energy

code is crippling the young! They cannot afford to get started for the crazy cost of things! Windmills suck, don't go there!

75. Affordable housing in St James. Located close to essentials. Protect as much of the Island as possible. Green energy - outside of town..great lakes
76. Our harbor, our beautiful beaches, our dunes, our wonderful inland lakes must be protected! There must be ordinances (building, use, etc) and the must be enforced. The attitude that you can come to Beaver Island and then do anything you want here has got to change. People are not willing to speak up because there seems to be no enforcement of ordinances already on paper!
77. Old growth forests need to be protected by special land use and zoning overlays. Rely upon the Natural Community Survey of the island to protect the Southwest Old Growth Forest on private property that contains Hemlock, Sugar Maple, etc. over 200 years old. Consider limited disturbance areas on parcels with high priority old growth forest. A special zoning overlay could prohibit clear cut logging, removal of dead falls and perhaps allow for a maximum disturbance area of perhaps one acre on each parcel within the the mapped old growth resource area. This would be similar to the protections afforded to other unique features like critical dunes. Ensure that other special resource areas that are identified in the 2017 Natural Communities Survey are adequately protected by land use and zoning designations.
78. Green energy facilities located on the north end of the island near the population center. All rare, threatened, and endangered species and habitats should be protected. Any workforce housing should take place in St. James Township.
79. Green energy should be located in field areas in the middle of island. Workforce housing near the village. Area from Iron Ore Bay to French Bay deserves special attention for protection.
80. Karnes Subdivision and select places on Donegal Bay Rd. previously mentioned. Protect bogs, swamps, wetlands and fragile beach areas. Locate green energy facilities across from gas station in 5he industrial area by generator.
81. Assuming they are located where migrating birds won't be endangered, I would support off-shore wind turbines even if they change our view out over the lake, because reducing our use of fossil fuels is so crucial and that's where the best winds are located. Similarly, we should support large areas of solar panels in the interior of the island, even though they might not look great. To improve the affordability of living/working on the island, development of community gardens and other measures to reduce the amount people must spend on healthy food should be a priority. It isn't easy to create a home garden on the island, between the deer and sometimes harsh weather and soil challenges. And produce at farm markets is sparse/isn't always available. The abundance of fresh fruits and vegetables that is available during the growing season on the mainland is a hard thing to give up, and perhaps community gardens and similar efforts would help.

Overall Feedback: Open House and Online Survey

1. More meetings between townships. Have an online forum for healthy discussion and promote it to residents.
2. Need another gas and oil vendor, so not a monopoly for Martin's. I'm almost priced out for heating.
3. Work on lining up some collectives, like carshare on Charlevoix side and here. So only one car is needed.
4. Continue the conversation for One Township for the the island
5. A great idea to reinforce what it means to be a democracy in America. People have forgotten.
6. I recently visited Crestone, CO. They take pride in being a very sustainable community. They are also a dark skies town. Some of their very intentional practices would fit well on BI
7. I used to enjoy "The Grill" for youth, family. Nice memories. Place to dance, socialize. Also, enjoyed free movie night at the church. Anything for youth?
8. Need to prohibit fireworks outside major holidays to avoid fire on Beaver (1) fire hazard
9. Need to prohibit fireworks outside major holidays to avoid fire on Beaver (2) fire hazard
10. Fireworks noise ordinance
11. Rental homes need to be regulated. Parties, noise commercial enterprise in residential setting. Unfair to fully regulated lodging providers (hotels).
12. Townships MUST work together. Planning Commissions MUST work together. Stop saying "We cannot because we have always done it this way." Try something new
13. We need an Island Manager employed by both townships
14. Need more visitor education on use of natural resources- Lyme disease and poison ivy
15. Use bigger dots (1)
16. Use bigger dots
17. Boat & Flight- the cost of a family of 5 to leave BI while the boat is not running is \$601.00 this is NOT practical in anyway long term. Family is extremely important and the root of all our lives. If families can not afford to leave the future of the Island is our Youth! Families are welcome with open arms. Creating / keeping opportunities is of the utmost importance. For the longevity of families presence here is island for medical reasons, family oriented emergencies, visiting loved ones, dentist appointment, the list goes on and on. The reality of families living here long term is NOT sustainable. If either the boat company or airports are receiving funding / grants based off the # of residents, we should 100% be seeing discounted rates. (1) affordability
18. Boat & Flight- the cost of a family of 5 to leave BI while the boat is not running is \$601.00 this is NOT practical in anyway long term. Family is extremely important and the root of all our lives. If families can not afford to leave the future of the Island is our Youth! Families are welcome with open arms. Creating / keeping opportunities is of the utmost importance. For the longevity of families presence here is island for medical reasons, family oriented emergencies, visiting loved ones, dentist appointment, the list goes on and on. The reality of families living here long term is NOT sustainable. If either the boat company or airports are receiving funding / grants based off the # of residents, we should 100% be seeing discounted rates. Boat & Flight- the cost of a family of 5 to leave BI while the boat is not running is \$601.00 this is NOT practical in anyway long term. Family is extremely important and the root of all our lives. If families can not afford to leave the future of the Island is our Youth! Families are welcome with open arms. Creating / keeping opportunities is of the utmost importance. For the longevity of families presence here is island for medical reasons, family oriented emergencies, visiting loved ones, dentist appointment, the list goes on and on. The reality of families living here long term is NOT sustainable. If

either the boat company or airports are receiving funding / grants based off the # of residents, we should 100% be seeing discounted rates. Affordability

19. Noticing less support for culture/ tourism. Cultivate a better conversational to increase awareness and support
20. Drone use on Beaver and other islands
21. Islanders feel unwelcome and not part of this process since the public meeting was only held in mid-August. Worst for working Islanders.
22. Promote Island as an amazing place to live and work. This is a place where we make / build / enjoy life. Tourism will come anyway as a result. How can we support / improve life for people who stay? (1)
23. Promote Island as an amazing place to live and work. This is a place where we make / build / enjoy life. Tourism will come anyway as a result. How can we support / improve life for people who stay?
24. CMU relies on Island taxpayer and for infrastructure and their ability to provide fire, EMS, roads and more. Need to give back to community.
25. Rentals- recreational boats and inland lakes and lake Michigan and clean energy certification and cleaning station
26. Home rentals need certification – some homes rented without smoke detectors, poor cleaning or wells being unchecked. Too many in homes being rented and the septic field is not adequate for #s.
27. Workforce housing, natural and cultural resource protection, outer island plans, grant writing, trail updates, invasive species protection
28. Energy independence and high speed internet makes this a place younger folks will want to live year round. Think like a progressive 25 yr old. Remote work, renewable energy, maker spaces, outdoor opportunities. Another bodega in town. People already grow their own weed on the island or bring it with them- huge tax opportunities there. Advertise the music festival better downstate in places like GR, Detroit and A2. Consider hosting a gravel grinder mountain bike race! We have great dirt roads for that (see Barry Roubaix downstate)
29. Enforce the blight ordinance.
30. Main street by the boat dock, Daddy Franks.....no parking. Traffic dangerous.
31. We need more law enforcement to help the speeding that happens when the tourists come over
32. Please also include part-time residents of BI. Some of us don't live there full time ONLY because of things like cell service, lack of internet, lack of strong representation in Peaine Township, and lack of long-term affordable housing. Make these sessions available to join virtually so we can all have input.
33. Here has to be a way for the laws we do have to be enforced. Maybe rotating officers from the mainland during the summer who do not have to live here year around. Then they would be able to enforce some rules. Need some speed limit signs and maybe biking signs.
34. Cheaper housing has to be done. The island is expansive enough without this barrier as well for new people and families. Create lots for tiny homes to be allowed and I'm sure they will fill up quickly with new people working remotely that can add a new energy to the island.
35. We need better speed limit signs on the Island. They only exist in St. James. To this day, I have no idea what the speed limit is on Kings Hwy or Sloptown, or East Side Drive or West Side Drive, or, etc., etc., etc. Unfortunately, I have seen a lot of people tailgating or recklessly driving as a result. Fireworks are a growing issue on the Island. People (usually renters) will set them off even when the fire rating is in the orange - folks can be stupid, so we need better published parameters in place.
36. Please consider reducing sqft of apartments to allow efficiency and 1 bedroom units as it stands the require sqft makes for a costly apartment.

37. Better access for handicap individuals in town. Such as a handicap boat launch for small watercraft (kayak; canoe). Improved services for senior's such as in home care; support with activities of daily living continued. Improved Pubic transport for when car is not available. Improved services to have your car repaired. Incentive and train skilled trades and crafts.
38. Community garden
39. Controlled growth should be considered an option for the townships. Maybe permits for building need more scrutiny than the current rubber-stamping they receive. The camping ordinance should be enforced so that the island doesn't have pockets of "tent cities" suddenly appearing on private land and staying there for well more than 2 weeks. I don't want the posting of speed limits, but too many vehicles are going too fast on the island roads. Several pets have already been lost, so how much time till a pedestrian or cyclist is hit and killed? Maybe electronic SLOW DOWN signs without posting actual speed limits can be used? To preserve the relaxing and pristine feel that visitors and residents have come to expect on Beaver, something needs to be done, even if it's just an educational effort.
40. As I answered the questions I certainly for many of the proposals, where is the money going to come from? We all want many of these things but not the high taxes needed to provide
41. Amend township ordinances to legally permit off road use vehicles, including golf carts and ORVs to use the paved roads. These ordinances are not enforced by law enforcement anyways and these vehicles use the roads anyways. Just allow it officially at this point!
42. Thank you for the opportunity to do this survey
43. Both citizen engagement and outside consultation should be utilized.
44. Every landowner should be invited to participate in this survey and in the Master Plan. Why hasn't the entire property tax list been informed about the plan and this survey?
45. WE need one township for 1 island ... if it is better to get funding to have 2 then they need to run as 1.
46. Please consider the vulnerability of our nearly exclusive dependence on the mainland for our food resources, and advocate measures to support the return of local food production. Please consider the same vulnerabilities regarding our energy dependence on the mainland, and advocate measures to support local renewable energy production measures!
47. The old MP in Peaine has just begun to be implemented-so much is left unfinished. The boards need to have regular updates on what is being achieved otherwise forget MP updates. Townships need regular updates from all their boards, authorities and committees to keep boards and the public updated. Short meetings are not a public advantage. Need more public health information/education for visitors on Lyme Disease and poison ivy. How is the County Emergency System working with the island? Poor cell phone for emergencies and township unable to get emergency call tower activated at Wagner. Wagner needs major updates for campers-water from a well not a shallow hand pump well, showers, toilets with running water to wash hands, internet, emergency call towers, limiting vehicle access to shore, better fire supression equipment....Airport should have a grassland bird policy and work with MDOT and USFWS to plant grasses that don't require mowing. Downtown poor zoning-large building (OKd with 2 bedrooms bigger than grocery store) where is their storm retention pond? Promote knowledge of deed restrictions with realtors and homeowners.-it has become buyers beware. Increase ADA compliance for all recreational facilities. More could be accomplished if the townships would work better together. Developing leadership on island boards is a necessity. What is the Coastal Hazard plan-we will have more high water and storm surges creating water hazards from trees, decks, and other debris. Some of the terms are incorrect-there is no Office of Great Lakes any longer and while I like the survey on shoreline vegetation, it was in 4-5 areas.

48. Community composting, solar farm for community electricity, broadband investment
49. Inform tourists that we still abide by Michigan laws. Bikes single file on the right side of the road. Pedestrians use sidewalks or walk single file on the side of the road opposing traffic. Look both ways when crossing the street. 25 mph or less in town. Consider parking permitted on only one side of street at Daddy Franks. Increased Sheriff presence of Officer in uniform at EVERY boat arrival, especially ball tournament weekend. Don't invite winter tourists to the Island unless the infrastructure can handle them.
50. Worker/affordable housing is what is choking the island. It should be the number one priority. The work force is strained enough here.
51. A no littering campaign would help old and new residents remember how good it can be here. Everyone is a potential litter bug unless they understand and care for the environment. Leaving a broken toilet and paint cans on Hannigan road is like putting trash in your own living room. We must respect the fact that our island is many critters' only home.
52. The Outer Islands are in need of Management Plans, enforcement and focus within this Master Plan and other community organizations (ex: Northern Lake Michigan Island Collaborative). Too long have they been left out of our discussion and they have never been more threatened than now. We need to work together to make a future plan of how to protect, respect and sustain these essential parts to our island community.
53. Keep it simple/ keep year round islanders happy
54. Your questionnaire had 3-4 repeat questions re: vegetative barriers
55. My top wish list item for myself is an indoor pool, even a small, limited hours pool. I know it's not likely, but hey, it's my wish list. For the island as a whole, workforce housing is the biggest issue.
56. Keep the townships separate.
57. This was a waste of time
58. Keep it charming and rustic. Too much modernized stuff going on. Protect the land.
59. A lot of the 2017 action steps have been accomplished. Many of your questions make it seem progress was not made, which is a disappointing and I believe confusing to many when it comes to evaluating issues within this survey and at the Aug 17 open house. Further, this process (even recognizing it's an update) seems to have far less public interaction throughout and late notices about pending activities and issuing this survey so close the open house seems disrespectful.
60. Please protect our community and resources.
61. Health Care and Emergency services should be a top priority.
62. The outer islands are precious jewels that, if managed thoughtfully, can exist as a testament to the thoughtful planning and careful protection of the Township's irreplaceable cultural and environmental resources.
63. more ADA restroom and beach/water access
64. One township above all, this is crazy!!
65. More access to the water for handicap population that would come here.
66. Island is turning into a rental/tourism kingdom. Come to the Island.....can't open businesses because there are not employees. Teachers and healthcare workers can't find places to live. Destroy the assets (natural resources) because a few businesses never earn enough money. Town is a mess with no parking and need to park a block away to get to the boat dock. St. James businesses make the money from Peaine Twp natural resources. Quality of life here is deteriorating for those that have lived and worked here. So many good people have moved off.

67. Do not kill the goose that lays the golden egg. Beaver Island is special and unique because it is undeveloped.
68. Please preserve the island ethos. It requires community education to understand and appreciate plants, wildlife, dark skies, birds, and the pristine silence of lake and woods. Encourage residents to get involved with island initiatives. Too many have become takers rather than givers.
69. I feel the island is changing too fast, and it's all tied to money. Slow growth is best.
70. Tiny houses allowed everywhere, but must not be just shacks.
71. I apologize for not answering all of the items--I avoided those I don't know much about, which was most of it! You may notice I answered items relating to either the environment (my field of work), or affordability, which I know less about but the trend on the island seems to be mirroring that of our larger society in terms of the widening gap between wealthy and not wealthy, and this is of great concern.

Demographic- Township Engagement

1. Virtual options and communication for people aren't here! And advertising that #1
2. If there was just one township #3
3. Email info #4
4. Regular township management #6
5. More events like this one- starlink internet at the community center #13
6. Communication of events, in different formats other than a chamber page, FB, etc. Local paper, monthly calendar of events on a marquee? #14
7. Posting issues & results update website #21
8. Signal on McCeuley's Pt. Rd
9. Nothing, both townships do an excellent job #28
10. Facebook page? E-mail list? I'm on Beaver Island This & That page. We receive the Beaver Island newspaper
11. I follow the townships on the Northern Islander. If there is a more direct way to stay up to date, I would like to know. #30
12. More time to voice long time Islander's views! #31
13. Zoom meetings updates on BI forum page on current issues #32
14. Longer township meetings- interactive website to ask questions #33
15. Townships do a great job #34
16. Having information on how to access / provide feedback or receive information #35
17. Virtual events #39
18. Have Township website contain comprehensive activity summary – now getting it from Joe Moore's news on the net site for meeting results #40
19. Don't know! #41
20. Email notice of new developments quarterly e-mail newsletters #42
21. More meeting info on websites #43
22. Need to know what the township websites are. Better communication. #44
23. Email a monthly newsletter? #45
24. Better road maintenance to the south end, especially West Pike Road which is truly unsafe. #48
25. Receive email on meetings & events #49
26. Facebook page #50
27. Updated websites- email news #51
28. You tell me! #54
29. If they did more joint meeting / task groups #58
30. Create a joint township #59
31. Opportunities such as this! Social media can be harsh and tends to be everyone's go to. Being intimidated closes doors that should be open. This is no fault of the townships. Society has moved towards internet-based communication. Thank you 😊 #60
32. Broader distribution of information available online- up to date- and published in local newspapers! #61
33. Website updates > 1 location with BI news and events that are kept up to date #63
34. Video conferencing available for all community meetings. This would allow those of us that are planning a life on the island but aren't yet living there, an opportunity to participate.
35. Email contacts/summaries of meetings/actions

36. Greater transparency.
37. Comments through something like this survey are good.
38. They are easy to contact
39. A single township!
40. I believe I already engage as necessary.
41. One township!
42. Townships do a good job.
43. I love these website polls. We are not always on the island, so this was very easy.
44. Having a single island government.
45. More notice of meetings.
46. Elect better Supervisors.
47. Although we've been homeowners/taxpayers here for over 40 years, we haven't been able to spend great lengths of time on the island due to our jobs, and thus I don't feel like my opinion carries much weight, and am reluctant to speak up. This survey is an opportunity to get a few thoughts out there--thank-you!
48. Video conferencing available for all community meetings. This would allow those of us that are planning a life on the island but aren't yet living there, an opportunity to participate.
49. Email contacts/summaries of meetings/actions
50. Greater transparency.
51. Comments through something like this survey are good.
52. They are easy to contact
53. A single township!
54. I believe I already engage as necessary.
55. One township!
56. Townships do a good job.
57. Having a single island government.
58. More notice of meetings.
59. Although we've been homeowners/taxpayers here for over 40 years, we haven't been able to spend great lengths of time on the island due to our jobs, and thus I don't feel like my opinion carries much weight, and am reluctant to speak up. This survey is an opportunity to get a few thoughts out there--thank-you!

ACTION PLAN

IDEAS FOR GOVERNMENT ACTION

This Action Plan does not commit the government or the partners listed to funding or working on the idea.

ECONOMY AND RECREATION

Ideas for Paradise Bay	Priority	Timeframe	Possible Partners
a) Improve the boat docks to be more flexible to changes in water levels.	Medium	Medium	Michigan Coastal Zone Management Program; Michigan Small Harbors Coalition; Army Corps of Engineers
b) Build a new public boat ramp/launch and a new fishing pier.	Top	Medium	Michigan Coastal Zone Management Program; Michigan Small Harbors Coalition; Army Corps of Engineers; cruiseship companies; fishing groups; festivals and events such as the Tall Ship Festival
c) Designate areas for public parking for boaters, and install signs to clearly mark the waterfront areas for public use, boater parking, and boat launching.	Medium	Short	St. James Township Planning Commission; St. James Township Board
d) Create conceptual designs for downtown and the harbor area that show what future improvements might look like.	Medium	Medium	St. James Township Planning Commission; Michigan Coastal Zone Management Program
e) Provide directional signs or a kiosk to welcome tourists that arrive downtown, at various beaches, and throughout the Island.	High	Short	St. James Township Planning Commission; Peaine Township Planning Commission; Preservation Association of Beaver Island; Beaver Island Association; Island Institute
f) Make the harbor area even more “charming” with holiday street lights, landscaping, and beautification projects.	Medium	Medium	St. James Township
g) Update the downtown public restrooms.	Medium	Medium	St. James Township; Beaver Island Historical Society
Ideas for Tourism	Priority	Timeframe	Possible Partners
a) Construct showers and improve restrooms at the Township campgrounds.	Medium	Medium	St. James Township; Peaine Township
b) Construct docks on the inland lakes.	Medium	Medium	St. James Township; Peaine Township; Beaver Island Association; Wildlife Club
c) Increase the capacity for tourism by encouraging new hotels/accommodations. This might be through tax abatements for new hotels, incentives for upgrades to existing hotels, and ensuring zoning is not a barrier to new construction.	Low	Long	St. James Township; Peaine Township; Chamber of Commerce; hotel and business owners
d) Create more universally accessible areas for recreation at the beaches, the marina, campgrounds, and in park areas.	Medium	Medium	St. James Township; Peaine Township; Planning Commissions; Michigan Department of Natural Resources; recreational grants through the State of Michigan
Ideas for Trails	Priority	Timeframe	Possible Partners
a) Fund a seasonal position to maintain trails. Maintenance might involve marking, mapping, and grooming trails for their appropriate year-round and seasonal use (ORV, snowmobile, biking, walking, etc.).	Top	Long	St. James Township; Peaine Township; Michigan Department of Natural Resources; Chamber of Commerce; Beaver Island Community School; Wildlife Club
b) Support land acquisition by the MDNR and others to connect existing trails.	Medium	Long	St. James Township; Peaine Township; Little Traverse Conservancy, Tribal Groups, Michigan Department of Natural Resources
c) Create a separated bike path along King’s Highway.	Medium	Long	St. James Township; Peaine Township; Charlevoix County Road Commission
d) Look for ways to accommodate bicyclists through separate paths, bike lanes, and signs where appropriate.	High	Medium	St. James Township; Peaine Township; Planning Commissions; Charlevoix County Road Commission

ACTION PLAN

IDEAS FOR GOVERNMENT ACTION

NATURAL AND CULTURAL RESOURCES			
Ideas for Water Quality	Priority	Timeframe	Possible Partners
a) Require additional inspections of septic systems on private property and of the community septic system in St. James Township.	Medium	Short	Charlevoix County; Planning Commissions; Zoning Administrator; Tip of the Mitt Watershed Council
b) Look for ways to improve existing requirements for a vegetative buffer on properties adjacent to lakes and streams.	High	Short	Planning Commissions; Beaver Island Association; Northern Lake Michigan Islands Collaborative; Michigan Department of Natural Resources
c) Review existing regulations for impervious surfaces permitted on waterfront lots to ensure they are restrictive enough to prevent water quality decline.	High	Short	Planning Commissions
Ideas for Resource Management	Priority	Timeframe	Possible Partners
a) Provide affordable options for removing junk cars and large debris.	Top	Medium	Townships governments; Beaver Island Transfer Station; Beaver Island Transportation Authority; scrapping companies
b) Enforce code violations for blight removal and strengthen code requirements.	High	Medium	Township governments
c) Protect tree canopy near the Island's forested roads.	High	Short	Township governments; Charlevoix County Road Commission
d) Protect air quality through increased dust control.	High	Medium	Township governments; Charlevoix County Road Commission
e) Enforce noise ordinances for fireworks, ORV use, and other loud disturbances.	Medium	Medium	Township governments; Charlevoix County Sheriff
f) Remove beech trees killed by Beech Bark Disease before damage to homes and other trees can occur.	Medium	Medium	Township governments; Michigan Department of Natural Resources; Charlevoix County Road Commission; loggers; property owners
g) Evaluate coastal setbacks and erosion rates to determine where new buildings should be set farther back from the water.	High	Medium	Township governments; Central Michigan University; Michigan Coastal Zone Management Program
h) Provide washing stations for boaters to clean crafts.	Medium	Medium	Township governments; Michigan Coastal Zone Management Program; Tribal groups; Beaver Island Association
i) Protect dunes and beaches with educational signs at public access points.	High	Medium	St. James Township; Peaine Township; Northern Lake Michigan Islands Collaborative; Beaver Island Association; Chamber of Commerce
j) Enforce dark-sky protections to protect nocturnal habitat.	Top	Medium	St. James Township; Peaine Township; Planning Commissions; Northern Lake Michigan Islands Collaborative; Headlands International Dark Sky Park; Beaver Island Association
k) Identify and fix culverts that are damaging fish migration and health.	High	Medium	St. James Township; Peaine Township; Charlevoix County Road Commission; Conservation Resource Alliance; Tribal groups
l) Protect tree canopy, especially near streams and rivers.	High	Short	Planning Commissions; Little Traverse Conservancy; Michigan Department of Natural Resources; Beaver Island Association
m) Manage the marina and near-shore areas for additional fish habitat (no hardened structures that heat water, etc.).	Medium	Medium	St. James Township; Peaine Township; Michigan Department of Natural Resources; marina operator
n) Require that new developments be provided with information about how property owners can protect native species, wildlife, and sensitive landscapes on their property.	Top	Short	Planning Commissions; Beaver Island Association; realtors

ACTION PLAN

IDEAS FOR GOVERNMENT ACTION

HOUSING			
Ideas for Affordability	Priority	Timeframe	Possible Partners
a) Incentivize affordable monthly rentals for those looking to try out life on Beaver Island with little risk.	Medium	Long	Township governments; Beaver Island Association; hotels; realtors
b) Alleviate cost burdens on low-income households by subsidizing housing costs through energy efficiency and home repair programs.	Medium	Long	Township governments; Michigan State Housing Development Authority; Great Lakes Energy; Northwest Michigan Community Action Agency
c) Lower the minimum building size through proactive zoning to enable tiny home development.	Top	Medium	Planning Commissions
d) Designate an area of land for micro-housing. Location should be near existing infrastructure and perhaps on lots unsuitable for traditional development.	Medium	Medium	Construction business owners; Port of St. James Property Owners Association; Beaver Island Association
e) Maintain the quality and appearance of existing subsidized housing.	High	Long	Planning Commissions; Beaver Island Community Development Corporation
f) Start an affordable housing committee endorsed and supported by the Townships.	Medium	Short	Township governments; realtors
g) Explore opportunities to house more labor on the Island, such as a cooperative housing model. This process could start with a town hall meeting with property owners, township officials, and business owners to formulate a plan.	Medium	Medium	Township governments; business owners; property owners; seasonal employees
Ideas for Energy Efficiency	Priority	Timeframe	Possible Partners
a) Encourage private property owners to retrofit homes with local programs.	Medium	Medium	Great Lakes Energy; Northwest Michigan Community Action Agency
b) Allow and incentivize small-scale wind and solar on private property.	Top	Medium	Planning Commissions; Great Lakes Energy; Island Institute
c) Pilot clean-energy projects in public buildings.	High	Long	Township governments; construction business owners; Beaver Island Community School

ACTION PLAN

IDEAS FOR GOVERNMENT ACTION

COMMUNITY SERVICES

Ideas for Emergency Planning	Priority	Timeframe	Possible Partners
a) Reduce the number of flights impaired by bad weather through precision instrument approach improvements at both airports.	Medium	Medium	Township governments; Beaver Island Airport; Fresh Air Aviation; Island Airways
b) Ensure new development in hard-to-reach areas takes steps to reduce fire risk.	Medium	Short	Planning Commissions; Beaver Island Fire Department; Michigan Department of Natural Resources; Michigan Coastal Zone Management Program
c) Ensure Advanced Life Support and Emergency Medical Services are available on the Island.	Top	Short	Township governments; Beaver Island Emergency Services
d) Create a local emergency plan and rehearse existing plan for Island evacuation and sheltering.	Medium	Medium	Township governments; Beaver Island Fire Department; Beaver Island Emergency Services; County Transit; County Emergency Management; County Planning Department; airports; Beaver Island Rural Health Center; Beaver Island Community School
e) Improve communications infrastructure for EMS, including regular community updates and infield access to Internet and communication tools.	High	Medium	Township governments; Charlevoix County; medical providers
Ideas for Transportation	Priority	Timeframe	Possible Partners
a) The two Townships should plan together for improvements to infrastructure with a Joint Capital Improvement Plan.	Top	Medium	Township governments; Charlevoix County
b) Add bike racks to the Charlevoix County Transit vehicles.	Medium	Medium	Township governments; Charlevoix County
c) Explore alternative funding models for managing the Emerald Isle.	Medium	Long	Beaver Island Transportation Authority; Beaver Island Boat Company; St. James Township; Office of the Great Lakes; Northern Michigan Great Lakes Island Collaborative
d) Look for opportunities to make the Island more walkable and bikeable.	High	Long	Township governments; Michigan Department of Natural Resources; recreational clubs
e) Protect lands that are inappropriate for ORV and snowmobile use.	Medium	Medium	Michigan Department of Natural Resources; Charlevoix County Sheriff
f) Obtain funding and modify the ferries to be able to run more frequently (daily or twice daily) through the spring and fall seasons.	Medium	Long	Michigan Department of Transportation; Beaver Island Transportation Authority; Beaver Island Boat Company
g) Explore opportunities to create a deep harbor launch on the Island for easier access by freighters, the US Coast Guard, and cruise ships.	Medium	Long	Island Energies; marina and harbor business leaders; Michigan Department of Transportation; Township governments; Michigan Coastal Zone Management Program; Army Corps of Engineers
Ideas for Public Services	Priority	Timeframe	Possible Partners
a) Explore options to improve the Transfer Station so as to process large metal items, like cars.	Medium	Long	Township governments
b) Update the sign ordinance to be legally enforceable.	Medium	Short	Planning Commissions
c) Provide public trash and recycling cans in the downtown area, especially near the boat dock.	Medium	Medium	Township governments; Transfer Station

ACTION PLAN

IDEAS FOR GOVERNMENT ACTION

LEADERSHIP AND SOCIAL SERVICES

Ideas for Leadership	Priority	Timeframe	Possible Partners
a) Review progress on the Master Plan's goals each year and revisit/revise the Master Plan as needed.	High	Long	Planning Commissions
b) Support the continued work of the Island Institute and the Office of the Great Lakes.	High	Long	Township governments; Preservation Association of Beaver Island; Beaver Island Association
c) Include representatives from all Township boards and commissions in the Northern Lake Michigan Islands Collaborative.	Medium	Medium	Northern Lake Michigan Islands Collaborative
d) Consolidate the two Townships into one township government.	Top	Long	Township governments; Michigan Townships Association; Charlevoix County
e) Require Township boards and commissions to write yearly reports published for community use.	High	Long	Township governments
Ideas for Social Services	Priority	Timeframe	Possible Partners
a) Advocate for increased services for vulnerable populations, such as those requiring in-home senior care.	High	Medium	Township governments; Charlevoix County Commission on Aging; Beaver Island Rural Health Center; medical care providers; Beaver Island Human Services Commission
b) Identify the needs of vulnerable populations like the disabled, low-income, and elderly.	High	Short	Township governments; Charlevoix County; Health Department; Island churches; Beaver Island Human Services Commission
c) Form a neighborhood "buddy network" to help ensure that care is provided to residents who may be isolated, especially in the winter months.	High	Short	Township governments; Charlevoix County; Health Department; Island churches; Beaver Island Human Services Commission
d) Continue to support extracurricular programming at the Beaver Island Community School.	High	Long	Beaver Island Community School; residents and Island non-profits; special interest groups and clubs