



Planning

We Share Your Vision

Whether we're creating public spaces or regulations, plans or community identities, we take a holistic design approach to shape, preserve and make places better for people. As community development experts who have worked extensively on behalf of public and private sector clients, we know that lasting solutions are never one-dimensional.

As our client, you can expect collaboration from a multidisciplinary team that's in lockstep with you from idea to reality—with lots of interaction and exchange along the way. From the start, we really listen to what's important to you and your stakeholders. This dialogue continues with strong consideration of a variety of economic, social, geographic, and environmental factors from different perspectives and culminates in a detailed plan that gives direction, and a path to successful change.

Plans begin with a clear vision—but it takes strong political will, consensus-building, trust and incentives to take the vision to reality. We apply our ability to forge successful public-private partnerships and provide multidimensional insights to advise you every step of the way. It's an interactive process—enjoyable and creative; artful and engaging. And ultimately, we like to think, inspiring.



In the Works

Exciting projects are always underway at OHM Advisors, and we can't wait until they're complete to share them. Explore a sampling of what's to come.

SEE ALL "IN THE WORKS" PROJECTS

In the Media

In addition to guest speakerships, our planners are sought after by the media as industry contributors and authors. Recent collaborations include:

- Cleveland NPR Radio
- Columbus Dispatch
- Columbus Underground
- Deadline Detroit
- REVITALIZATION

SEE MORE

PLANNING SERVICES

Comprehensive Plans & Visioning

Public Engagement & Facilitation

Economic Development Planning

Land Development, Zoning & Entitlements



Transportation Planning

Codes & Standards

We understand the benefits of amending outdated codes and standards and adopting new user-friendly, graphic and legally defensible codes to guide and promote growth and economic prosperity. We can help you develop simple and accessible zoning codes, design standards and guidelines during the planning process that promote quality, sustainable development and elevate the character of your community.

FEATURED TEAM MEMBERS



Aaron Domini

Principal



Mark Bockrath

Director of Planning & Urban Design



Arthur Schmidt, IV

Project Manager



Chris Riggert

Project Manager



Eric Dryer

Senior Planner



Tony Slanec

Principal

2

B R i

Beckett&Raeder

About

Disciplines

Projects

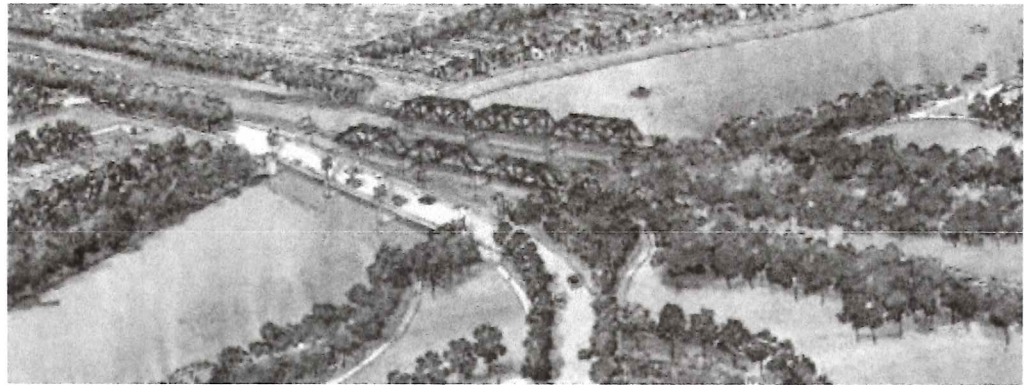
Services

Landscape Architecture

Planning

Engineering

Environmental



Planning

Beckett & Raeder, Inc. offers clients a full range of planning services for managing community growth. Our commitment to making great places means collaborating with local units of government, planning organizations, citizens, funding resources, and development entities to create an attractive and vibrant community. Whether we are analyzing stakeholders and incentive packages at the site scale, or designing community engagement strategies for townships together, BRI crafts strategies that are always driven by excellent data, tailored to a community's unique character.

Scope of Services:

Community Master Plans
Strategic Planning
Campus Planning
Recreation Master Planning
Park Master Planning
Greenway Planning
Rural Land Planning
Land Use Planning
Community Development
Traditional Neighborhood &
Small Town Design
Watershed Planning

GIS Services
Demographics
Natural Features Interpretive Studies
Market Analysis
Brownfield Redevelopment
Tax Increment Financing &
Development Plans
Zoning Ordinances / Codes
Specialized Zoning Ordinance
Provisions

Development
Downtown
Special Features
Adaptive
Retail Market
Charrette
Physical
DDA Creation
New Urban
Expert V

269.927.0100



PLANNING

planning is all about people

Unlock the Power of a Plan

WIGHTMAN PLANNING

You have to know where you want to go in order to get there. Then, you need a plan to make it happen. As simple as that sounds, a solid plan requires exploration, insight, knowledge, communication, and a lot of listening. Wightman planners excel at this. We can help you promote growth, wisely manage resources, and create places where people thrive.

It starts with visioning. Whether your goal is placemaking, downtown development, municipal planning, feasibility studies, educational planning, or facility asset management, we ask the right questions to clarify your needs and objectives. We include your constituents – community members, employees, students and parents, and decision makers – to hear their ideas, bridge differing opinions, and create support. The result is your roadmap to fiscally responsible, human-focused solutions.

Your new master plan, parks and recreation plan, or capital improvement plan can be a tool for seeking grants, bond proposals, and private investment. Our planning experts can also assist you in pursuing these funding streams.

OUR PLANNING SPECIALTIES



COMMUNITY ENGAGEMENT

Wightman is a full-service consulting firm that exists to service people and the communities we live in. We use cookies to capture information such as IP addresses and tailor the website to our clients' needs. We also use this information to target and measure promotional material.

Please see our Privacy Policy for more information.

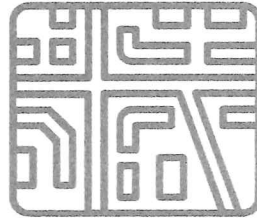
ACCEPT

DECLINE

2



MASTER PLANS



URBAN DESIGN



EDUCATIONAL FACILITY PLANNING



ECONOMIC DEVELOPMENT



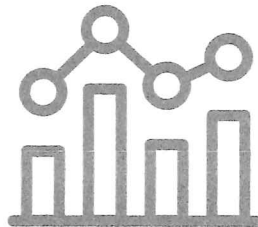
Wightman is a full-service consulting firm that exists to service people and the communities we live in. We use cookies to capture information such as IP addresses and tailor the website to our clients' needs. We also use this information to target and measure promotional material.

Please see our [Privacy Policy](#) for more information.

2



FEASIBILITY STUDIES



DATA COMPILATION & ANALYSIS



BOND ISSUE ASSISTANCE



CONTRACTUAL SERVICES

RELATED SERVICES

Our Planning services clients have also found these services useful:

ARCHITECTURE

Wightman is a full-service consulting firm that exists to service people and the communities we live in. We use cookies to capture information such as IP addresses and tailor the website to our clients' needs. We also use this information to target and measure promotional material.

Please see our Privacy Policy for more information.

INTERIOR DESIGN

LANDSCAPE ARCHITECTURE

2

RELATED RESOURCES

TRANSFORMATIONAL LEADERSHIP DURING AND AFTER THE PANDEMIC

POST-PANDEMIC SCHOOLS: WHAT DOES THAT LOOK LIKE?

TRANSFORMING AN OUTDATED SCIENCE WING

INDOOR AIR QUALITY & ENERGY EFFICIENCY ARE NOT MUTUALLY EXCLUSIVE

RECOVERING FROM COVID – FEDERAL RESPONSE FUNDING

“Mr. Baxmeyer’s ...understanding of what it takes to pass a bond and ability to help deliver a clear, concise, and consistent message was instrumental to our success.”

PAUL HARTSIG

Bath Community Schools Superintendent, (formerly with Dowagiac Union Schools)

PLANNING PROJECTS

YOUR PLANNING TEAM AT WORK

Wightman is a full-service consulting firm that exists to service people and the communities we live in. We use cookies to capture information such as IP addresses and tailor the website to our clients' needs. We also use this information to target and measure promotional material.

Please see our Privacy Policy for more information.

3

WIGHTMAN *knows having a solid plan is the essential first step toward your vision becoming reality. Let's start the conversation to put your plan in place.*

Contact Us



Wightman is a full-service consulting firm with a dynamic team of more than 170 professionals. We analyze, advise, design, and deliver successful projects in partnership with government, commercial, educational, and energy organizations throughout the Great Lakes region. Founded in 1946, our firm has eight locations, including Allegan, Benton Harbor, Hastings, Kalamazoo, Royal Oak, and Southgate, Michigan, as well as Plymouth and South Bend, Indiana.

Services we offer include Architecture, Civil Engineering, and Surveying. Additional specialty services include GIS, Landscape Architecture, Planning, Interior Design, and Reality Capture.

Our uniqueness is found in our approach to serving the people and the communities we live in with comprehensive, multi-disciplinary services, industry expertise, accurate scope of work, and a passion for listening.

CALL US

BENTON HARBOR: [269.927.0100](tel:269.927.0100)

ALLEGAN: [269.673.8465](tel:269.673.8465)

KALAMAZOO: [269.327.3532](tel:269.327.3532)

ROYAL OAK: [248.791.1371](tel:248.791.1371)

HASTINGS: [269.945.3668](tel:269.945.3668)

SOUTH BEND: [574.233.1841](tel:574.233.1841)

PLYMOUTH: [574.936.3469](tel:574.936.3469)

SOUTHGATE: [248.983.5885](tel:248.983.5885)

FAX US

FAX: 269.927.1300

FOLLOW US



TELL US ABOUT WHAT YOU NEED

GENERAL CONTACT FORM

Wightman is a full-service consulting firm that exists to service people and the communities we live in. We use cookies to capture information such as IP addresses and tailor the website to our clients' needs. We also use this information to target and measure promotional material.

Please see our Privacy Policy for more information.



4

We've got more than 220 sessions for you to log CM.
See for yourself...
Register today!



(<https://www5.smartadserver.com/click?>

[imgid=29616991&insid=11537755&pgid=584791&fmtid=34984&ckid=8949172429976264689&uii=5526404135751a1-4c05-8d32-](#)

[cf4f4f1560f2&opdt=1682609074652&tmstp=9759643282&tgt=%24dt%3d1t%3b%24dma%3d540%3b%24hc&sywebster%2f&cappid=8949172429976264689&go=https%3a%2f%2fplanning.org%2fconference%2f%3futm_c](#)



[Join \(/join/\)](#)

[Log In \(/login/?next=/consultants/directory/giffels-webster/\)](#)



MENU

Enter keyword or phrase

Search

[Home \(/\)](#) > [In Your Community \(/communityoutreach/\)](#) > [Consultants \(/consultants/\)](#) > [Find a Consultant \(/consultants/find/\)](#) >

Giffels Webster

About Giffels Webster

Giffels Webster's Clearzoning® transforms zoning ordinances into user-friendly, online codes. It makes it easier for readers to quickly access and understand zoning regulations. Benefits of this transformation include a clear organizational structure that makes sense, more colorful illustrations, and searchable words and terms.

A key feature of Clearzoning is the zoning district two-page spread. This overview answers the most frequently asked questions: What uses are allowed and what are the height and setback regulations? Presenting these key zoning regulations in a clear, easy-to-read manner allows users to quickly find basic information and enabling them to dig deeper.

The Clearzoning process provides a "health checkup" for your code. Our team of experts conduct a zoning audit of each code as part of the transformation process. Then, our team identifies and fixes incorrect cross-references, duplicative language and inconsistent text. Through the audit, inconsistencies between the zoning code and master plan policies, changes in regulations and zoning practice trends are addressed.



Learn more at giffelswebster.com/clearzoning (<http://giffelswebster.com/clearzoning>).



Address

28 West Adams, Suite 1200
Detroit, MI 48226

Branch Offices

Macomb County
6303 26 Mile Road, Suite 100
Washington Twp., MI 48094



Oakland County
1025 East Maple, Suite 100
Birmingham, MI 48009

Contact

marketing@giffelswebster.com (<mailto:marketing@giffelswebster.com>)

Website

<http://www.giffelswebster.com> (<http://www.giffelswebster.com>)

LinkedIn

www.linkedin.com/company/giffels-webster (<http://www.linkedin.com/company/giffels-webster>)

Facebook

www.facebook.com/giffelswebster/ (<http://www.facebook.com/giffelswebster/>)

Twitter

<https://twitter.com/giffelswebster> (<https://twitter.com/giffelswebster>)

Regions Served

Midwest • West

Planning Specialties

Community or Neighborhood Development • Comprehensive, Master or Long-Range Planning
• Downtowns and Main Streets • Facilities Planning Management • Institutional Campus
Planning • Land-Use and Development Regulation and Zoning • Mixed-Use Development
Planning • Parking Standards and Traffic Engineering • Parks, Open Space, and Recreation
Planning • Pedestrian and Bicycle Infrastructure/Active Transportation • Streetscape/Corridor
Improvements and Beautification • Transportation Planning • Universal Design/Age-Friendly
Planning/ADA Compliance • Visioning and Placemaking • Wayfinding and Signage

Services Offered

Code Writing • Community Engagement • On-Call Planning Services • Plan Creation or
Updates • Project Management • Urban Design Services • Zoning
Administration/Development Services

4



(<https://birdeye.com/>)

Giffels Webster

4.5 ★ ★ ★ ★ ★ [16 reviews](#)

[Write a review](#)

Construction (<https://reviews.birdeye.com/d/construction/detroit-mi/>) |
Detroit, MI 48226 United States

[Claim this profile \(/giffels-webster-156221193658736/claim/\)](/giffels-webster-156221193658736/claim/)



(<https://birdeye.com/cmp/how-to-get-google-reviews/>)



Call ([tel:\(313\)962-4442](tel:(313)962-4442)) (<https://www.google.com/maps/dir/2api-18.doc>)

📍 28 W Adams Ave Suite 1200, Suite 1200, Detroit, MI 48226
United States

📞 (313) 962-4442 ([tel:\(313\)962-4442](tel:(313)962-4442))

🌐 <https://www.giffelswebster.com/> (<https://www.giffelswebster...>)

4

(<https://birdeye.com/>)

More business info ▾



4.5
★★★★★
16 reviews

5 ★
4 ★
3 ★
2 ★
1 ★

13
0
0
0
2

1 review has no rating

WRITE A REVIEW

Reviews (11)

Google Reviews (5)
(<https://www.google.com/maps/search/?api=1&query=Giffels%20Webster%2028%2>)

Sort By: Featured ▾

Cindy Satur-Lareau

on Facebook (<https://www.facebook.com/giffelswebster/reviews/>)

4 years ago

Awesome, talented and diverse people to work with! I love working for Giffels Webster!