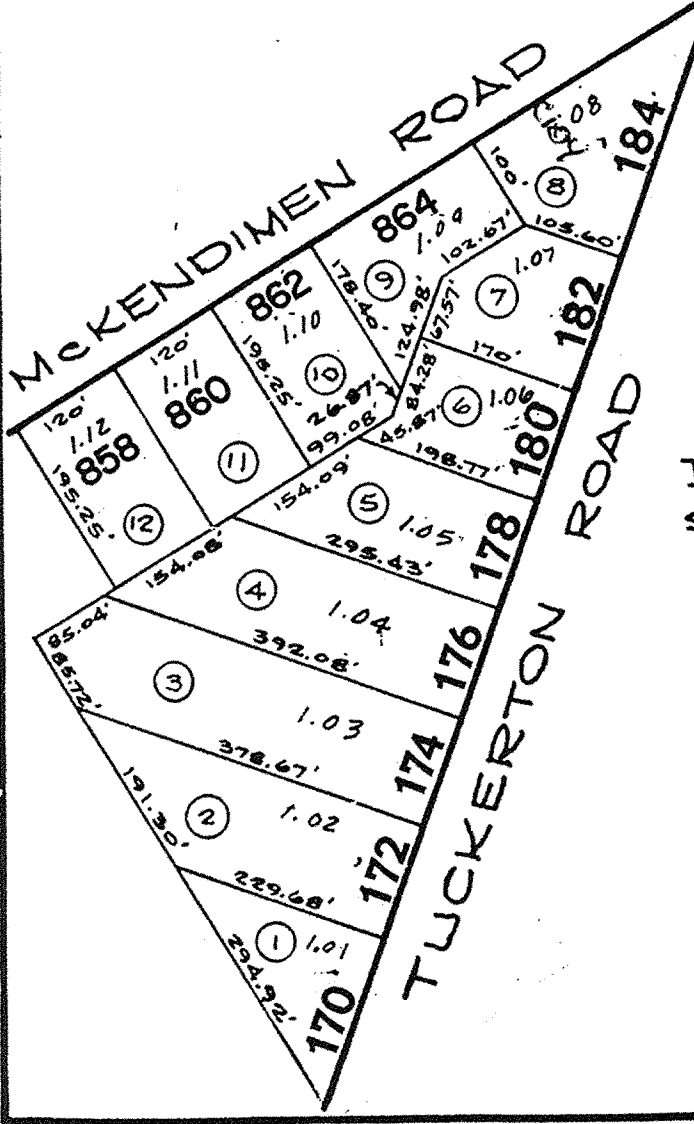
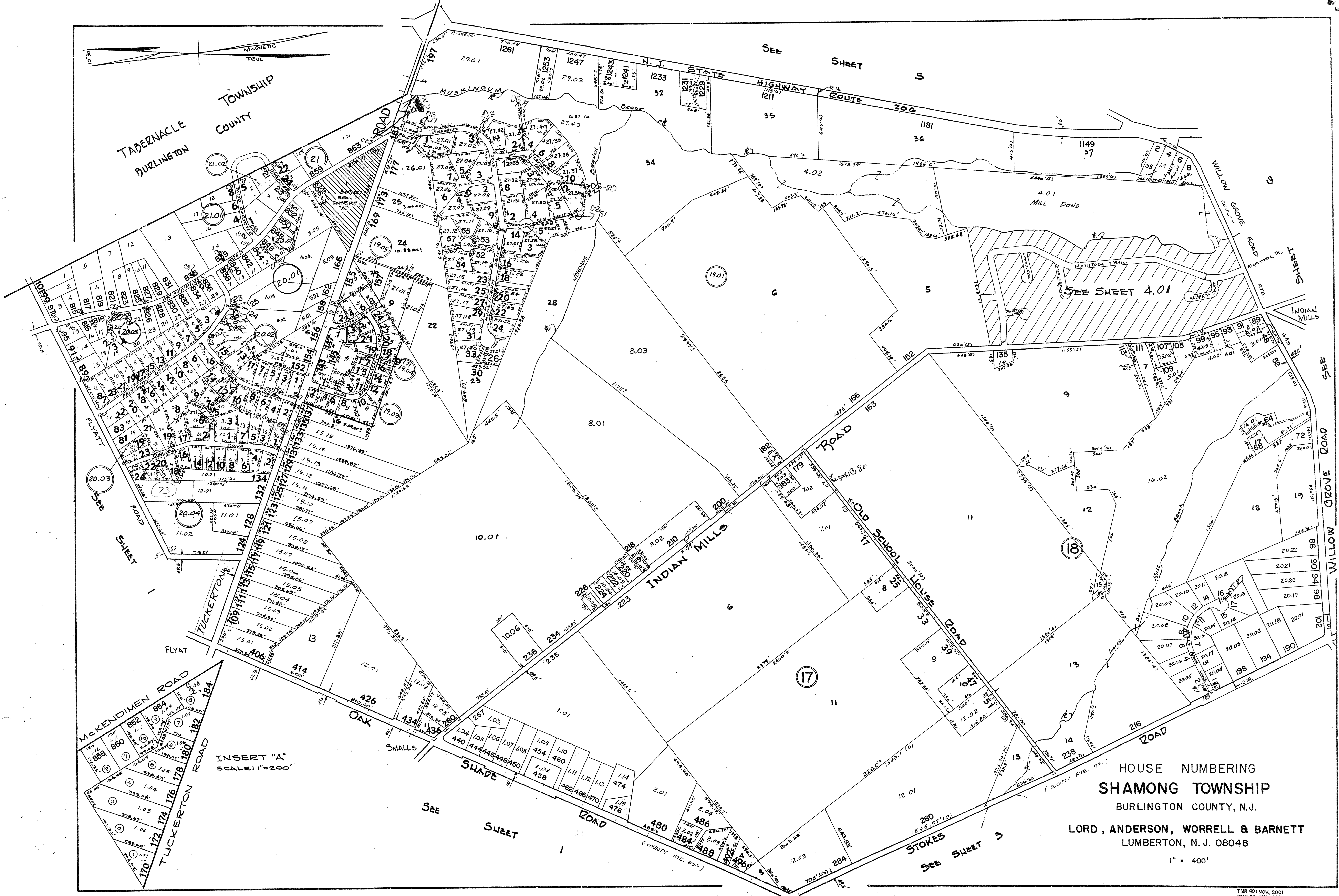


TOWNSHIP  
COUNTY  
TABERNACLE  
BURLINGTON

SEE SHEET 5  
STATE HIGHWAY ROUTE 206

SEE SHEET 4.01

SEE SHEET 3  
WILLOW GROVE ROAD



INSERT "A"  
SCALE: 1"=200'

HOUSE NUMBERING  
**SHAMONG TOWNSHIP**  
BURLINGTON COUNTY, N.J.  
LORD, ANDERSON, WORRELL & BARNETT  
LUMBERTON, N. J. 08048

1" = 400'