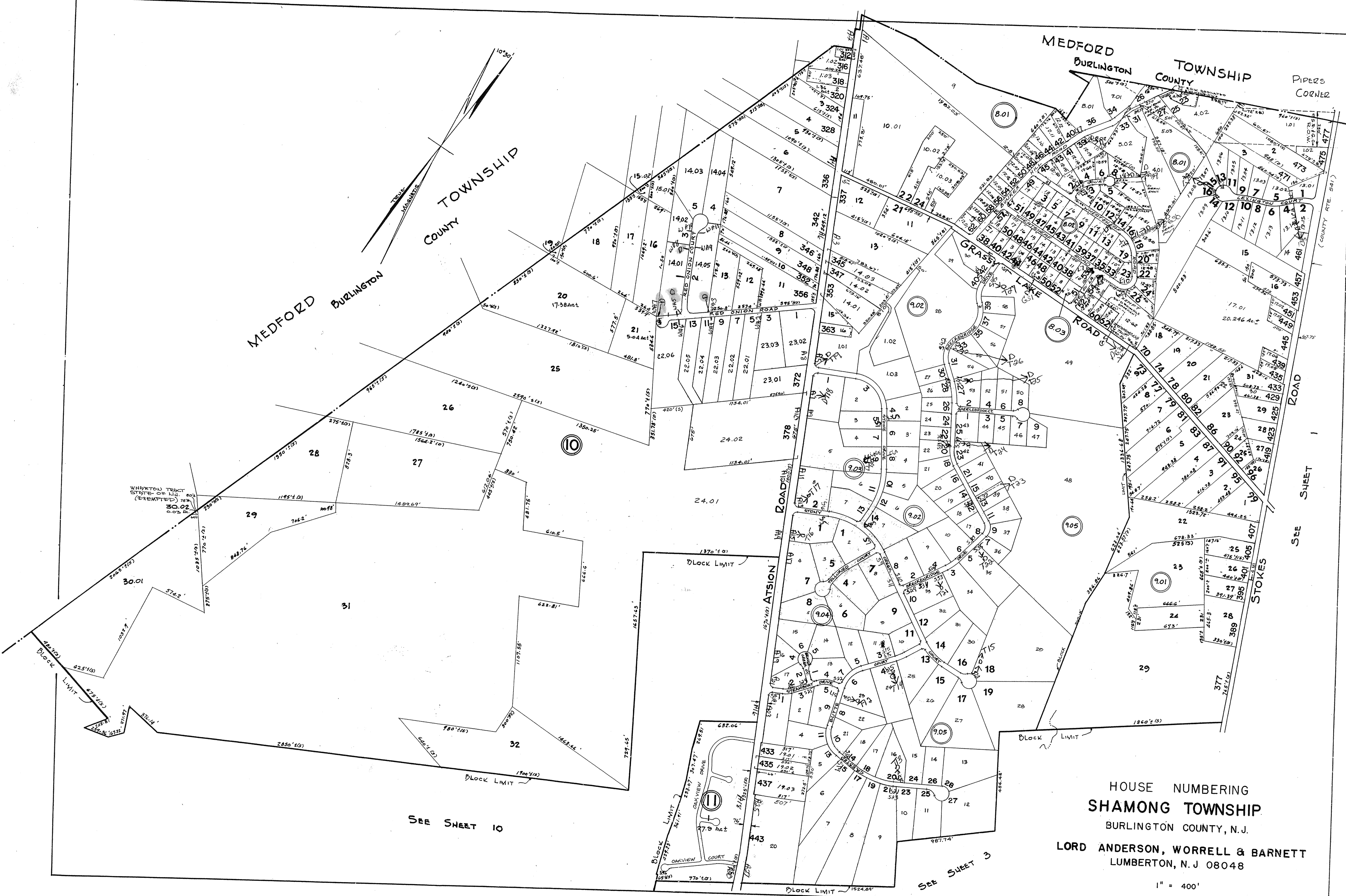


MEDFORD TOWNSHIP  
BURLINGTON COUNTY

MEDFORD TOWNSHIP  
BURLINGTON COUNTY  
PIPERS CORNER

WHARTON TRACT  
STATE OF N.J. 802  
(EXEMPTED) 78  
30.02  
0.00 AC.



SEE SHEET 10

SEE SHEET 3

SEE SHEET 1

HOUSE NUMBERING  
 SHAMONG TOWNSHIP  
 BURLINGTON COUNTY, N.J.  
 LORD ANDERSON, WORRELL & BARNETT  
 LUMBERTON, N.J. 08048

1" = 400'