



**DRAFT**

# **RICHLAND TOWNSHIP RECREATION PLAN 2022-2026**



DRAFT

The Richland Township Recreation Plan was prepared in 2021 by the Richland Township Park Board, Hemlock, Saginaw County, Michigan.

It was adopted on \_\_\_\_\_, by the Park Board, The Richland Township Board approved of the Plan by resolution on \_\_\_\_\_.

**Richland Township Park Board**

Lisa smith-Hagarty, Chairperson  
Gabriel Faubert, Treasurer  
Ingrid Haven, Secretary  
Virginia Lisik  
Megan Scott  
Angela Strzynski  
Vincent Boysen

**Richland Township Board**

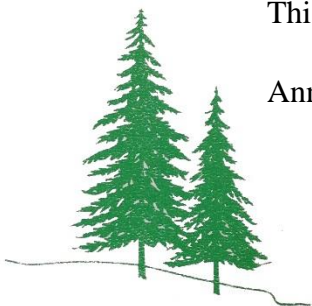
Brian Frederick, Supervisor  
David Earley, Treasurer  
Renee Herhold, Clerk  
Susan Neuenfeldt, Trustee  
Brian Beckrow, Trustee

**Richland Township Manager**

Annamarie Reno

This plan was prepared by:

Annamarie Reno, Richland Township Manager



# Table of Contents

I.	Community Description.....	1
II.	Administrative Structure.....	2
III.	Recreation Resource Inventories.....	6
IV.	Public Input Process.....	16
V.	Goals & Objectives.....	21
VI.	Action Program.....	24
VII.	Adoption.....	28
	Appendix A.....	29
	Appendix B.....	34
	Appendix C.....	43
	Appendix D.....	53

DRAFT

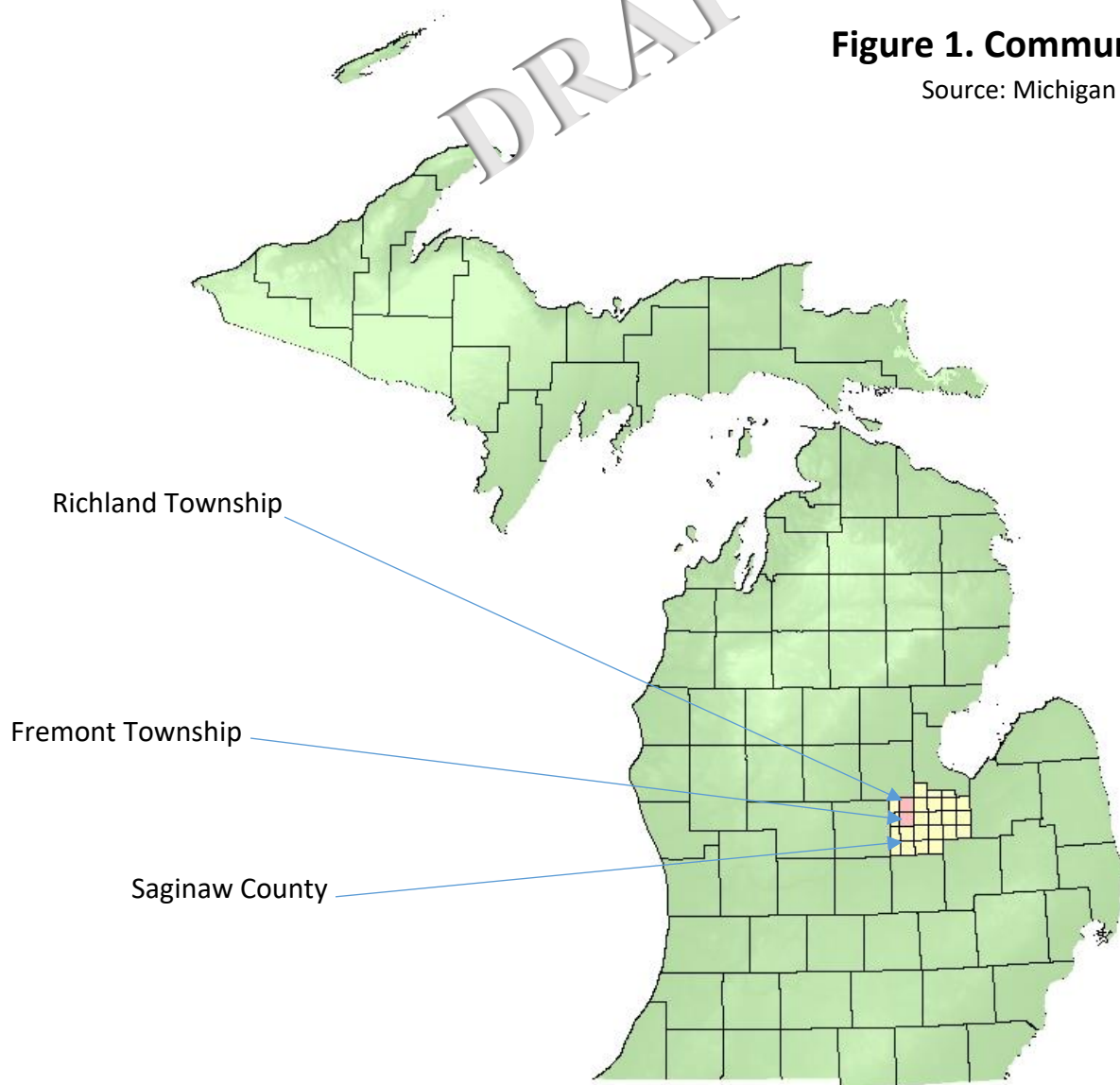


# I. Community Description

Richland Township is in northwestern Saginaw County in Mid-Michigan. It is a largely rural community centered around the unincorporated community of Hemlock. At approximately 36 square miles in size, it is a typical Michigan township. Hemlock is located along M-46, a major thoroughfare that carries most of the traffic from west to east through the Township. Fremont Township is located directly south of Richland Township. It has no recreation facilities or programming; therefore, its residents rely upon Richland Township for park and recreation services. The recreation plan was developed by the Richland Township Park Board. It focuses on all aspects of recreation for both Richland Township and Fremont Township residents. Based on the 2010 census, the population of Fremont Township was 2,096 and the population for Richland Township was 4,144, for a combined population of 6,240.

**Figure 1. Community Map**

Source: Michigan Geographical Library



## II. ADMINISTRATIVE STRUCTURE

### Role of Commission/ Department, Authority and/or Staff Description and Organizational Chart.

The Richland Township Park Board was formed pursuant to the Township Park Act 157 of 1905. The Board consists of seven members who are directly elected by the voters of Richland Township. The Board members make policy decisions, hire, and supervise employees and manage the Park Fund, all within the general policy framework of the Township. The Park Board hires a park Superintendent for the Richland Township Community Park and seasonal employees (usually 5 or 7) necessary to operate the park and run recreation programs.



### Programs and Activities

Richland Township and its Park are the hub for many recreational and community activities. The annual Hemlock Sawdust Days Festival in September is held in Richland Township Park, drawing approximately 2,000 people. Recently, the Hemlock Sawdust Days Committee is hosting a spring and fall bazaar at the park bringing in many vendors and hundreds of patrons. The annual concerts in the park draw approximately 500 people. The Farmer's Market operates every Thursday from mid-June through mid-October utilizing the red barn and attached large pavilion. Individuals from Hemlock and the surrounding communities patronize the Farmer's Market weekly bringing in hundreds of people. There is a special Farmer's Market Holiday event each December. The red barn and pavilions are also utilized for community events, the summer recreation program and they are rented for reunions, graduation parties, weddings, birthdays, and business outings. The boy scouts will hold special classes at the park for their safety



badges, where they bring in ambulance, fire rescue equipment, police vehicles and helicopters.



The Hemlock Summer Recreation Program has been a joint program run by the Richland Township Park Board and the Hemlock School District. In past years the six-week program meets four days per week offering various programs such as bowling, tennis, amusement park visits, arts in the park and a community safety awareness day. In 2018, the overall attendance at different programs was roughly 120. The program is run by a part-time director and 4-8 part-time staff. With COVID-19 we have not had any programming available to the community during 2020. In 2021 we held a Music for Munchkins camp and a cardio drumming camp. We are looking in 2022 or 2023 to bring on a new Recreational Director, with the program being ran by the Richland Township Park Board. The Board is looking to continue with a four-to-six-week program cycle

three to four days per week offering various programs such as Music for Munchkins, soccer, volleyball, craft and other various camps.

The Township operates several very successful youth programs, including softball, baseball, and soccer. These sports are run through either independent volunteer organizations who are vital to our community or through the Township Recreational Program. The 2021 baseball/softball program had almost 375 youth playing, ranging from tee ball to age 14. The high school baseball and softball teams hold school tournaments at our fields. We also have people from all over the area that come to use our disc golf course.

With several walking paths, you will find walkers from Hemlock and the surrounding townships walking and jogging at our park throughout the four seasons. We have recently added a shuffleboard court that can be used for tournaments. Our Park has several horseshoe pits, a basketball and volleyball court that are used daily and an ice rink for winter enjoyment. With all the yearly activities our park hosts, there is always something for residents and visitors to do.

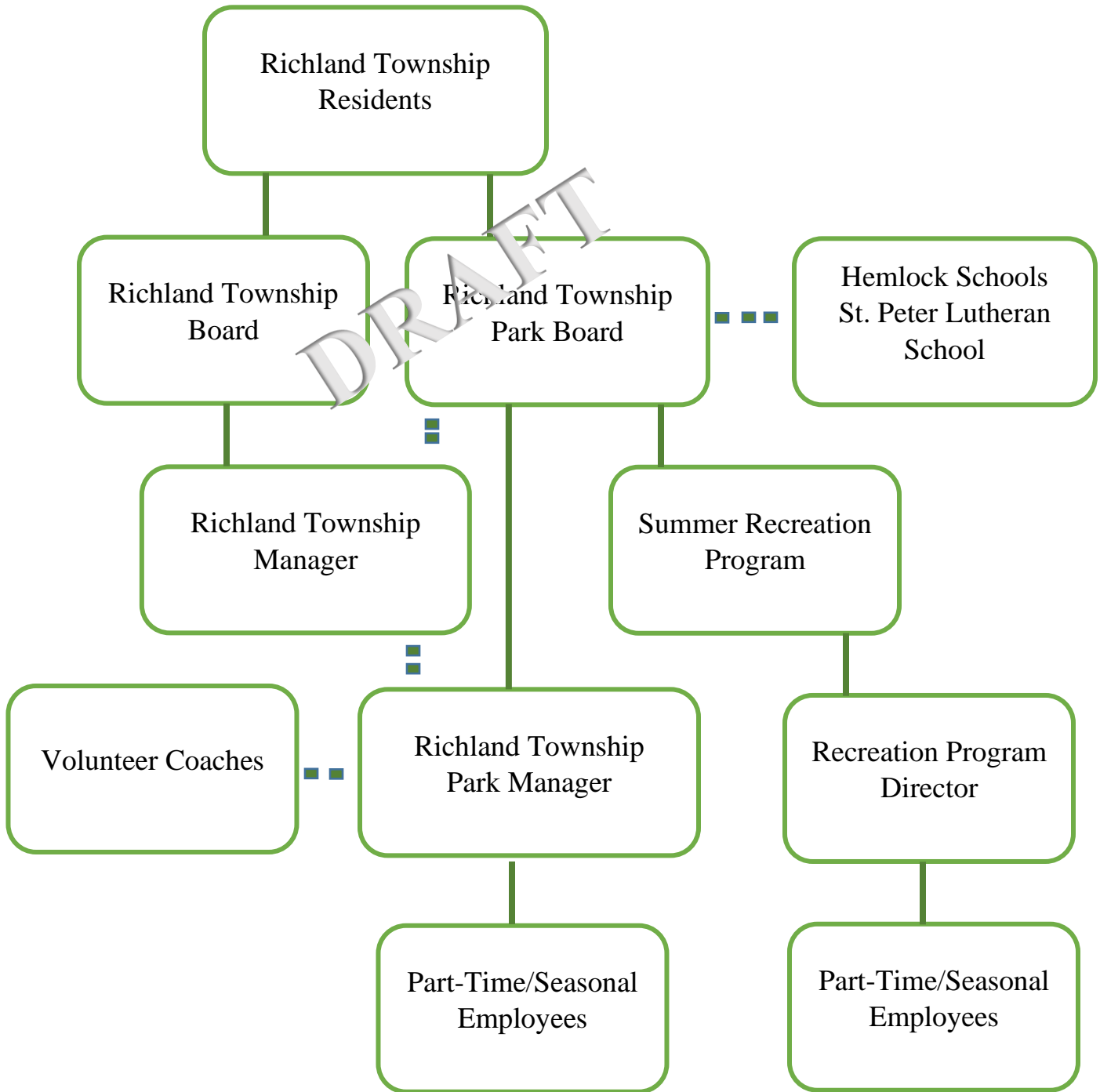
Most recently, the Township Park Board has added several areas to the park for the viewing of daffodils. The Park board sells daffodils to residents who may take the bulbs home for their own enjoyment, or they may have them planted in the park for other patrons to enjoy during their walks through the park. All money collected in the sale of the daffodils is put back into the program for the upkeep of the daffodils with any extra funding going toward the purchase of new improvements to the park.

## Funding and Budgets

Parks and Recreation funding in Richland Township comes primarily from a one mill, voter-approved, Township-wide tax. Due to the Headlee Amendment of 1978 the township is currently collecting 0.9084 mills per thousand of tax dollars collected. The millage is in place until the end of 2022, at which time it will be up for renewal. The millage is supplemented by recreation program registration fees, pavilion reservation fees, and donations which provide for annual revenues of approximately \$151,414. These revenues provide funding for operations, maintenance, programing, and capital improvements. Budget worksheets for fiscal years 2020 - 2021 and 2021- 2022 are provided in Appendix A. Neighboring Fremont Township (population 2,096), which has no parks of its own, makes an annual contribution in the amount of \$700.00 to the Richland Township Parks as well (this is included in the overall revenue figures).

The Township coordinates closely with Hemlock Public Schools regarding shared use of facilities and programs. The most recent Community Education Director is an ex-officio participant of the Summer Recreation programs offered in the park and holds a college degree relevant to the position. The Township also works with the local parochial school (St. Peter Lutheran School) to provide facilities for their recreational activities.

## FIGURE 2. ORGANIZATIONAL CHART





### III. Recreational and Resource Inventories

Richland Township’s recreational facilities and programming are centered around its Community Park. It uses other township and school facilities for additional recreational space. A detailed inventory list of recreational facilities is given below. The inventory below was completed by Richland Township and the consultant by updating the inventory listed in their past recreation plan. Figure 3 on page 6 shows the location of the Parks in Richland Township.

#### Township Facilities

##### Richland Township Community Park

**Type:** Large Urban Park      **Size:** 33 acres

**Service Area:** Richland Township, Fremont Township, Hemlock School District and surrounding area

**Purpose/Use:** All-purpose Park that meets community-based recreational needs.

**Recreational Facilities:**

- |  |                            |
|--|----------------------------|
| * 5 Ball Diamonds (2 lighted)            | * 1 Sand Volleyball Court  |
| * 1 Half-Court Basketball Court          | * 4 Soccer Fields          |
| * 3 Playgrounds                          | * Picnic Shelter Pavilions |
| * Exercise Pathway with Fitness Stations | * 80 picnic tables         |
| * 6 Pairs of Horseshoe Pits              | * 13 Grills                |
| * Shuffleboard                           | * Nature Trail             |
| * Disc Golf                              |                            |
| * Farmer’s Market                        |                            |
| * Ice Rink                               |                            |

**Support Facilities:**

- \* Portable Concession Stand
- \* Storage Facilities
- \* Work Barn
- \* Two (2) Restrooms Facilities
- \* Paved/Gravel Parking
- \* Electrical House

**Accessibility:**

- \* 3 (most of the facilities/park areas meet accessibility guidelines)



## Grants Received:

- \* Par Plan (2018) Two sets of bleachers for our ball fields; all in good condition.
- \* 11-804 (2011) Frisbee Golf, Shuffleboard Courts, Volleyball Court, Fitness Equipment, Paving of North Parking Lot.
- \* 26-180 (2006) Restroom Building, Pathways, Fitness Stations, Skate Park Equipment, Basketball Court.
- \* CM99-081 (1999) Picnic Shelter, Fence, 8 ft. wide Pathway; all in good to excellent condition.
- \* 26-001306 (1984) Restrooms, Parking, Play Equipment, Trail; satisfactory to good condition.
- \* 26-1224 (1981) Baseball Field, Horseshoe Pits, Fencing: all in satisfactory to excellent condition.
- \* 26-00833 (1976) Park Acquisition; developed and fully utilized. Facilities in satisfactory to excellent condition.

## Richland Township Governmental Center

**Type:** Community Park

**Size:** 8 Acres

**Service Area:** Richland Township, Fremont Township, Hemlock School District, and surrounding area.

**Purpose/Use:** Open space and recreational use.

### Recreational Facilities:

- \* One (1) Practice Ball Diamond
- \* Open space

### Support Facilities

- \* Paved Parking
- \* Office Space (within Township Administration Building)
- \* Public Meeting Room (within Township Administration Building)
- \* Restrooms (within Township Administration Building)

**Accessibility:** 4 (entire park meets accessibility guidelines)



# Richland Township Ice Rink

**Type:** Other

**Size:** 1 acre

**Service Area:** Richland Township, Fremont Township, Hemlock School District

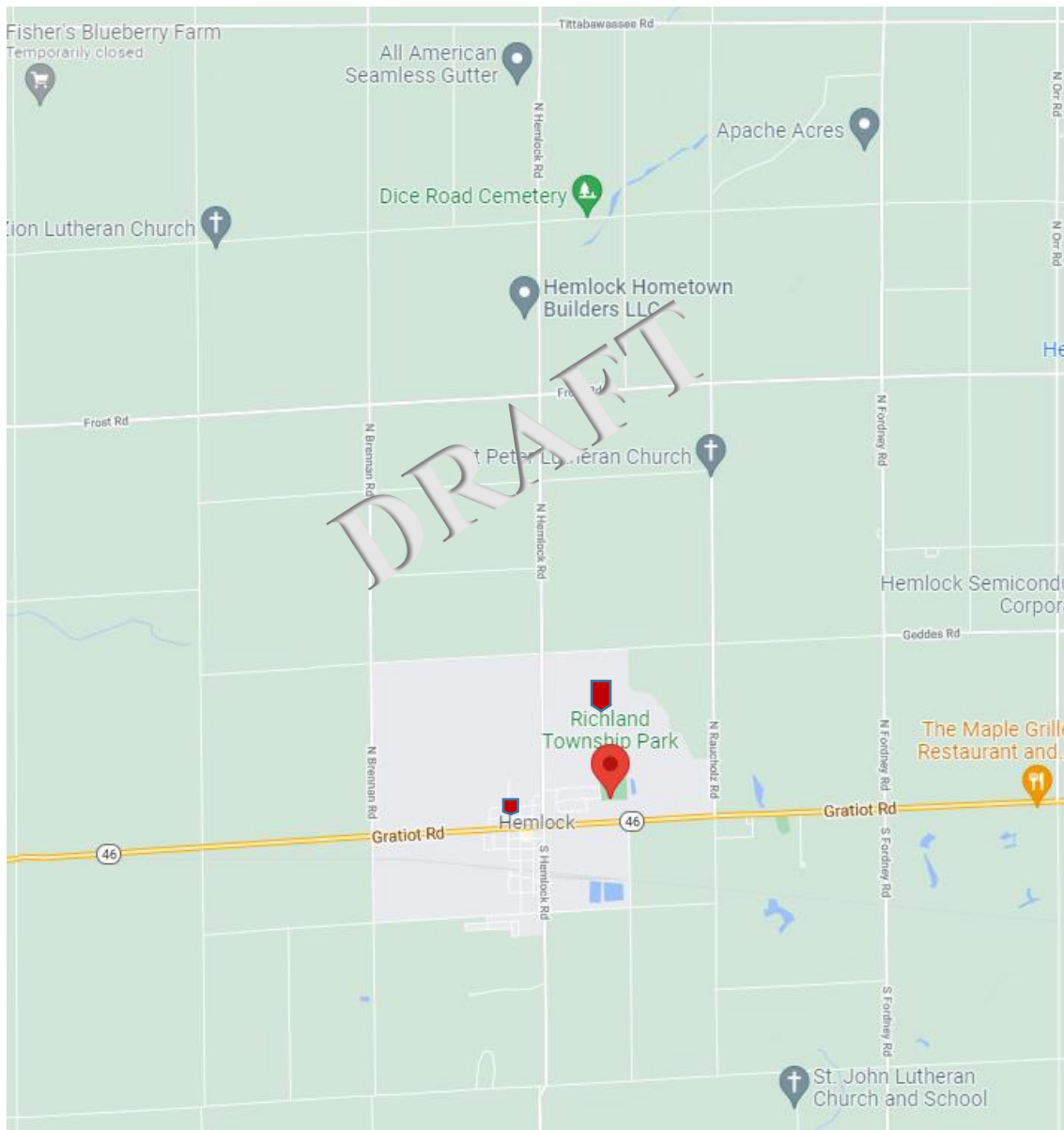
**Purpose/Use:** Outdoor Ice Skating

**Recreational Facilities:**

\* None

**Accessibility:** 3 (most of the facilities/park areas meet accessibility guidelines)





**Richland Township**  
**Figure 3. Park Location Map**

Source:  
 Google Maps





## Public School Facilities

### Hemlock High School

6 Tennis Courts  
New Ballfield  
Lighted Football Field & Track  
Gymnasium

### Hemlock Middle School

2 ball diamonds  
5 basketball goals  
Multi-purpose gymnasium

### Ling Elementary School

6 Tennis Courts/Pickleball  
1 ball diamond  
Playground  
2 basketball goals  
2 soccer fields  
Multi-purpose gymnasium  
Picnic Shelter with 6 tables

### Hemlock Elementary School

Playground



## Comparison Standard

The recommended classification system for local Regional Open Space from the Michigan Department of Natural Resources (DNR) defines 5 types of parks that may be applicable to Richland Township.

A **Mini-Park** is less than one acre in size and less than ¼ mile from a residential setting. It is used to address limited, isolated, or unique recreational needs. **Neighborhood Parks** are generally 5 to 10 acres in size, and they serve as the recreational and social focus of the neighborhood. Their service area is generally ¼ to ½ mile. **Schools-Parks** can combine parks with school sites to help meet the recreational space needs for the community. **Community Parks** serve a broader purpose than Neighborhood Parks. They have more amenities and usually serve two or more neighborhoods within a ½ to 3 mile radius and are generally 30 – 50 acres in size. **Large Urban Parks** are generally 50 acres or more in size and they serve a broader purpose than community parks. They focus on meeting community-based recreation needs, as well as preserving unique landscapes and open spaces.



Even though it is less than 50 acres, the Richland Township Park can be classified as a Large Urban Park because it serves the entire Township and the surrounding area.

Richland Township has approximately 34 acres of park land for its 4,144 citizens. General industry standards would suggest 5 – 10 acres of regional park land per 1,000 citizens, or approximately 20 – 40 acres of regional park land for Richland Township. This would suggest that Richland Township has adequate regional park land for its citizens. However, if one considers the larger service area including Fremont Township and the Hemlock School District, one could consider Richland Township as somewhat deficient in park land. Further, Richland Township has no Mini-Parks or Neighborhood Parks to provide that “close-to-home” open space or park functions for the Township.

Conversely, more recent park guidelines indicate that one is to consider the “Level of Service” desired by the community. If Richland Township resident’s needs are met with the existing 33 acres of Township Park land, then that amount is sufficient. This is why the community input portion of a recreation plan is so important. The Park Board needs to understand the wishes of the community it serves. If the community is growing or if there are other significant demographic changes, the Park Board may need to plan for additional park land or changes to their existing facilities. With an aging population and the baby boomer generation reaching retirement age, communities like Richland Township are seeing a need for recreational facilities and programs for senior citizens.

## Top 10 Reasons Why Parks are Important

The National Recreation and Park Association maintains a top ten list of reasons why parks are important in the United States.

1. Public parks provide millions of Americans with the opportunity to be physically active.
2. Parks have true economic benefit.
3. Parks provide vital green space in a fast developing American landscape.
4. Parks preserve critical wildlife habitat.
5. Parks and recreation facilitate social interactions.
6. Leisure activities in parks improve moods, reduce stress and enhance a sense of wellbeing.
7. Recreational programs provide organized structure and enjoyable activities.
8. Community recreation services provide a refuge of safety for at-risk youth.
9. Therapeutic recreation is an outlet that individuals with disabilities have.
10. Public parks embody the American tradition of preserving public lands.

This list is from the article, *Top 10 Reasons Parks are Important*, by Richard J. Dolesh, Monica Hobbs Vinluan, and Michael Phillips.



The (NRPA) National Recreation and Park Association has published typical recreation facility standards that specify facility service area, the number of facilities needed to service the population, and the land area needed. These standards can be used in conjunction with the acreage standards to further identify Richland Township’s recreational needs. Table 1, provides a comparison of the Township’s facilities against the NRPA’s published recreation facility standards.

Table 1 – Comparison Standards

	Standard	Township Acreage	Requirement	Deficiency
Mini Parks*	.25 acres/1,000 residents	0.5	1.5	1
Neighborhood Parks	1 acre/1,000 residents	0	6	6
Community Parks	5 acres/1,000 residents	33	30	(3)
Special Use Parks*	Variable	80	N/A	
Sports Complex	Variable	0	N/A	
<b>Total</b>		<b>13.5</b>		

Table is based on the 2010 Census Population  
 \* Mini Parks & Special Use Parks include school calculation



Accessibility

An American with Disabilities Act (ADA) compliance assessment of the Township’s parks was conducted during the past plan update. Since that time, Richland Township has worked to improve accessibility at its parks. The Township has currently installed a couple ADA compliant swings throughout the park for different age groups and will continue every effort to improve accessibility at the park sites as it continues to improve the parks. The assessment consisted of a visual inspection of each park in regard to access and circulation in relation to park facilities. As noted in the inventory listing, most sites meet accessibility standards.



Creating a park system that is safe, accessible, and usable to all individuals within the community, including those with disabilities is essential. A grading system has been developed by the Michigan Department of Natural Resource (DNR) to easily identify those parks and facilities which are most, and least handicap accessible and usable, based on the ADA guidelines. The following accessibility grading system uses a five (5) point system ranging from one (1), none of the facilities/park areas meet accessibility guidelines, to five (5), the entire park was developed/renovated using the principals of universal design.

Figure 5. Accessibility Grading System (DNR)

MNDR Accessibility Grading System for Parks and Recreational Facilities	
Accessibility Grading	Definition
1	None of the facilities/park areas meet accessibility guidelines
2	Some of the facilities/park areas meet accessibility guidelines
3	Most of the facilities/park areas meet accessibility guidelines
4	The entire park meets accessibility guidelines
5	The entire park was developed/renovated using the principals of universal design

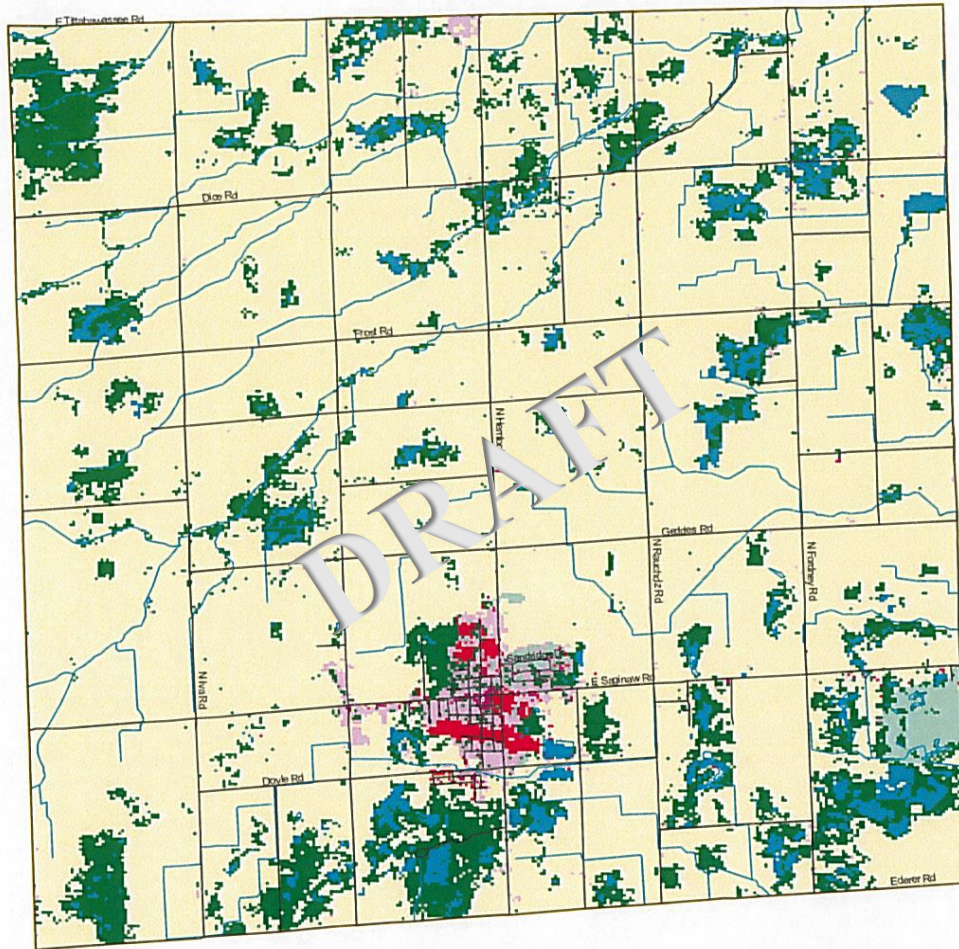


## Natural Resource Inventory

A resource inventory can be used to identify open space areas that may be desirable for protection and/or public access through acquisition or other means. The map of the following



page shows land cover in Richland Township. The vast majority of land in Richland Township is used for agricultural purposes. The most significant natural resources are probably the pockets of woodland scattered across the Township, concentrated more in the far northern and far southern portions. There are also several county drains and small creeks that are used primarily for agricultural drainage.



Richland Township

- Open Water
- Low Intensity Residential
- High Intensity Residential
- Commercial/Industrial/Transportation
- Forest
- Agriculture
- Urban/Recreational Grasses
- Wetland



Source: Michigan Geographic Data Library

FIGURE 6. LAND COVER & NATURAL RESOURCES INVENTORY

## IV. Public Input Process

To comply with the Michigan Department of Resources guidelines for the Development of Community Park, Recreation Open Space and Greenway Plans, Richland Township offered public input at each Park Board meeting and made available a park survey for residents and those that use the park facilities. The survey was advertised on our Facebook page, on the township website and we had copies available at the Township Administrative Building. An Open House and public meeting were also held. There was also a 30-day period for review and comment on the draft plan.

### Public Meeting (Survey & Open House)

While public input to the Five-Year Recreation Plan was made available at every meeting starting with the Park Board Meeting on April 5, 2021. On August 3, 2021, the Park Board made available at the summer concert series, the township website and Township Administration Building a survey asking for public input. An Open House was held on December 6, 2021 to gather input regarding the recreation in the Township at the Township Administrative Building in Hemlock from 6 – 7 P.M. The event was well publicized in the local newspaper, the township website, and Facebook, (see attachments in appendix B). Input from all public sources is listed below:

- Outdoor Concerts/Events
- \* Music in the Park
- \* Big Truck Show
- \* Sawdust Days
- \* Summer Recreation Programs
  - \* Toddler Activities
  - \* Day Camp for Kids
  - \* Activities Geared Towards Teens
  - \* More Kids Events and Summer Recreation Programming
  - \* Free Kids Activities
  - \* Kids Art Program
- \* Live Music
- \* Holiday Festival
  - \* Winter Festival
- \* Graduation Parties
- \* More Kids Events
- \* Movie Night
- \* Love the Arts Night
- \* Rock Garden
- \* Easter Egg Hunt



- \* Senior Picnic
- \* Family Reunions
- \* Band Shell
- \* Beer Tent During Sawdust Days
- \* Craft Shows
- \* Food Trucks
- \* Fundraiser Walks
- \* Festivals
- \* Carnivals
- \* Local Bands
- \* Sledding Hill
- Splash Pad at Park
- Soccer Games
  - \* Fall Soccer
  - \* Spring Soccer
- Farmers Market
- More Trash Cans in Disc Golf Area
- More Handicap Accessibility
- More Adult Programs
  - \* Adult Soccer League
  - \* Shuffleboard League
  - \* Horseshoe League
  - \* Volleyball
  - \* Walking Club
  - \* Able to Access Shuffleboard Equipment
- Yoga or Exercise Classes
- More Fitness Stations
- More Sports Courts
  - \* Pickle Ball
- Better Drainage
- More Drinking fountains
- Improve parking Lot
  - \* More Parking
  - \* Better Parking Lot Surface



- More Children's Play Equipment
  - \* Merry-Go-Round needs Replacement
  - \* New Play Equipment
  - \* New Play Equipment next to Ballfields
- More benches and Tables
- Dog Park -
  - \* Dog Activities
  - \* Dog Bag Stations
- Restrooms
  - \* Cleaner Restrooms
  - \* Update Restrooms/Paint
- Baseball & Softball Fields
  - \* More Youth Baseball Fields
  - \* Men's Fast Pitch
  - \* Softball Tournaments
  - \* Better Concession Stand
  - \* Improved Maintenance of Fields
  - \* Rec League Softball
  - \* Score Boards that Work
  - \* Indoor Practice Facility
- Walking Paths
  - \* Put Walking Paths Farther from Ballfields – Very Congested During Games
  - \* Would Like to see More Walking Paths
  - \* Inspirational Messages on Path & Distance Markers
- Skateboarding Park
- Better Care of Park
  - \* Clean Park Up
  - \* Modernize the Athletics Areas
  - \* More Areas of Sun in Park
  - \* Better Job Picking up Leaves – Especially Around Fence and Buildings
  - \* Power Wash Pavilions and Slabs

- Improved Park Lighting
- Available Park Staff
- Eagle Scout Projects
- Safety
  - \* More Camera's in Park
  - \* Speed Bumps in Subdivision to Slow Down Traffic
  - \* More Security
  - \* More Police Presence
- Picnics
- Water Park for Younger Children
- Splash Pad
- Pump Track
- Signage
- More Color/Flowers
- Community Pool
- More Advertising of Events
- More Water Fountains
- Ice Rink
  - \* Hockey
  - \* Twinkle Lights over Ice Rink
  - \* Skate Rental

DRAFT

## Public Meeting

A draft of the plan was completed in December of 2021; it was made available for public review and comment for 30 days. The draft plan was placed in the Township Offices, the Library, and on the Township's website. Once the 30-day review period was completed, a second public input opportunity was provided with the final advertised public hearing held on January 24, 2022, at the Township Administrative Building. Following the public hearing, the plan was adopted by the Township Board by resolution at the following meeting in January 2022.



## V. Goals and Objectives

Developing objectives and goals is an important part of the recreational planning process. The overall goal of the parks and recreation department is, obviously, to provide recreation opportunities for the community and/or region it serves, and possibly tourist. More specific goals must be based on the demographic characteristics of the population served and the physical environmental characteristics of the area.

Goals are the broadest level. They are overreaching and general. Objectives carry out the purpose of the goal. The Action Program is the last level and most specific. It identifies specific projects. The action plan can also include organizational, staffing, programming, public information, and operation and maintenance actions.



The Richland Township Park Board formulated and updated the following goals and objectives based upon the input received at the community open house (input session) on November 1 and December 6, 2021, the park survey and general input from regular monthly park board meetings, as well as the demographic and physical characteristics of Richland Township.

### GOAL 1

**Provide safe broad community-based recreation opportunities that improve overall quality of life for all residents of Richland Township and the Hemlock School District.**

The Richland Township Park Board is the main supplier of recreational facilities in the Hemlock area. There are very few public or private recreational opportunities outside of those provided by the Richland Township Park Board at the Richland Township Park. The Park wishes to provide facilities and programming that appeal to the largest proportion of potential recreational participants to make Richland Township an enjoyable place to live.

*Objective* – Continue to add amenities to the Richland Township Park facilities based upon community input.

Community input is a solid indicator of what residents in the community want in terms of recreational facilities and programming. The Park Board will continue to plan its improvements based upon the needs expressed in formal and informal input sessions.



## GOAL 2

### **Provide recreational facilities and programming that allows for social interaction for all age groups.**

The facilities provided by the Richland Township Park Board serve as a community hub and social center for the Township. The programming provided allows for social interaction of participants and also for spectators (i.e. little league fans and concert-goers). These help to provide a sense of togetherness and connectivity to the area.

*Objective* – To provide regular recreational programming for all residents of Richland Township.

Most of the current programming provided by the Park Board is focused on youth. As the population in the area ages, the Park Board should consider adding more programs for other age groups. Many residents who are of the “Baby Boom” generation are retiring and looking for activities to participate in during their free time.

*Objective* – Seek ongoing support for the Richland Township Parks millage.

Because the Richland Township Parks and Recreational program is funded almost entirely by a dedicated millage, the Park Board needs to continually seek support for this funding source. While renewal does not occur until 2022, the Park Board needs to show that it has been stewards of the resources and has been respondent to the needs of the community.



## GOAL 3

### **Continue to improve and upgrade Richland Township recreational and support facilities to offer the community a park that they can be proud of.**

Park facilities are among the most visible indicators of a community’s identity and pride, as well as local tax dollars at work. The Park Board wishes to provide quality facilities that show that Richland Township is an active community that takes pride in its community facilities.

*Objective* – Keep Park facilities safe and well maintained.

*Objective* – Add support facilities to improve the ease of use for our parks.

## GOAL 4

### **Improve the health and fitness for Richland Township residents and neighboring communities.**

Because there are limited opportunities for fitness and recreation in the Hemlock area, the Richland Township Park Board wants to continue to provide and expand its programs and facilities so that residents of the community can enjoy the benefits of physical fitness.

*Objective* – Evaluate existing facilities and programming in terms of fitness opportunities for the community.

*Objective* – Continue to partner with the Hemlock School District for recreational programming. Examine ways to expand year-round programming.

Most of the current programming is done during the summer months. To keep residents active and fit, the Board would like to explore year-round programming. This may be done with the School District or other semi-public organizations.

*Objective* – Add passive and active facilities and programming as needed based upon available funding and community input.

## GOAL 5

### **Provide recreational opportunities for people with disabilities.**

The Park Board wishes to provide opportunities for all residents, including those with disabilities. Over the years, it has improved the accessibility of the facilities in the park and wishes to do so.

*Objective* – Make sure that all improvements and upgrades to the park facilities are handicap accessible.

## VI. Action Program

With goals and objective in place, The Richland Township Park Board was able to develop a five (5) year action program to work towards accomplishing our goals and objectives. Projects were assigned by priority of 1 through 5, with 1 being most important and 5 being least important.

### 1. Action Item – Upgrade the play equipment.

**Priority – 1**

**Relates to Goal(s) – All**

#### **Rational/Discussion**

A newer subdivision with young families sits near the north end of the Township Park. While there has been some newer playground equipment installed in the park there is quite a bit of existing playground equipment that is old and in disrepair. Safety is an issue with the older equipment. Community input shows that respondents are interested in seeing more play equipment in the Richland Township Park.



### 2. Action Item – Resurface the south parking lot.

**Priority – 1**

**Relates to Goal(s) – 3, 4**

#### **Rationale/Discussion**

The south parking lot is old and in need of repair. Repaving it with properly marked handicapped spaces would improve the aesthetics and safety of the park as well as overall accessibility.

### 3. Action Item – Update lighting throughout park and parking lots.

**Priority – 1**

**Relates to Goal(s) – 1, 3**

#### **Rationale/Discussion**

Updating the lighting throughout the park with energy efficient LED lighting will improve safety and provide better, more energy efficient lighting to those who may use the multi-use path after dark. LED lighting will not only provide residents utilizing the parks facilities with better more energy efficient lighting, but it will be a less expensive way to provide quality lighting to park goers, allowing the Richland Township Park Board more cash flow to spend in other needed areas of the park.



**4. Action Item** – Add a dog park.

**Priority** – 1

**Relates to Goal(s)** – 1, 3

**Rational/Discussion**

Residents with dogs could have a secure, fenced area in which to release their dogs. A few pieces of dog-related playground equipment could be included. This topic was brought up during community input.



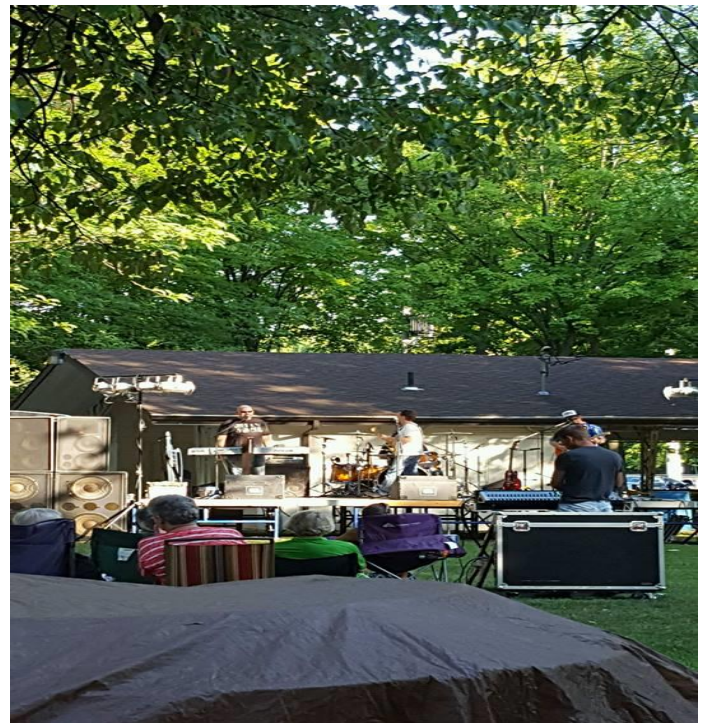
**5. Action Item** – More concerts in the park/recreational programming.

**Priority** – 1

**Relates to Goal(s)** – 1, 2, 4, 5

**Rational/Discussion**

Recreation and entertainment facilities in the Township are limited. More concerts, movies and other programming in the park would provide residents and visitors with a broad range of activities to keep them busy within the Township. Providing these type of events can be costly and time consuming, but would provide resident's with a range of activities to keep them active, social and healthy. Due to the cost of running some of these events, like the concerts in the park, educational classes, day camps for kids, movie nights, etc. other funding methods may need to be utilized in the way of grants, partnerships with other local organizations, fundraising or participation fees. The topic of more concerts, events and programming are brought up at almost every other board meeting.





## 6. Action Item – Infrastructure.

**Priority – 2**

**Relates to Goal(s) – All**

**Rational/Discussion**

As the community continues to grow so does the needs of the park. It is important to the Park Board that as new items are introduced to the park's infrastructure. That those items continue to be well maintained to gain the highest life expectancy of all park items. With a limited availability of space provided at the park it is imperative that the layout of the park be considered when making room for new items, along with the needs of the community.



## 7. Action Item – Add a sledding hill.

**Priority – 3**

**Relates to Goal(s) – 1, 3, 5**

**Rational/Discussion**

There are no sledding facilities in the Hemlock area. Adding a sledding hill would provide a winter fitness opportunity. This item was suggested during a monthly board meeting from a resident of the township.

## 8. Action Item – Acquire additional property to expand the park.

**Priority – 4**

**Relates to Goal(s) – All**

**Rational/Discussion**

More land would allow the Township to expand the possibility of for development of community parks and more ambitious future goals. This topic came up during community input discussion multiple times.

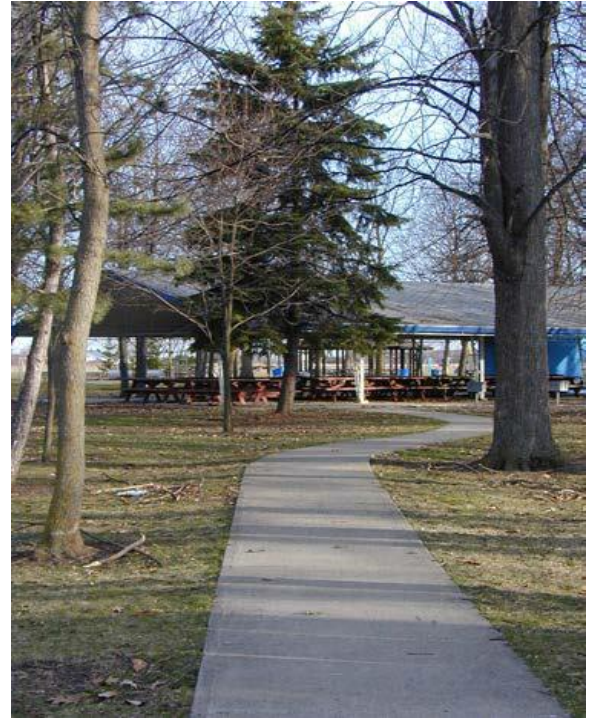
**9. Action Item** – Add and improve multi-use path connections.

**Priority** – 5

**Relates to Goal(s)** – 1, 4, 5

**Rationale/Discussion**

The non-motorized connections to Richland Township need improvement with stronger connections within the Township to the downtown area of Hemlock and to the adjacent neighborhoods. The Park Board would also like to have a regional path system that would connect to adjacent communities, such as Thomas Township.



**10. Action Item** – Renovate the former ice rink/tennis courts into a splash pad, band shelter, etc.

**Priority** – 5

**Relates to Goal(s)** – All

**Rational/Discussion**

The former ice rink/tennis courts have not been used for tennis in several years. The Township has been using as an ice rink (weather permitting) and staging for the events tent, however the surface area is showing its age. The pavement is old and cracked and would need to be replaced or resurfaced in order convert to a splash pad, theater, etc.

## VII. Adoption

After the public input and notification process described in Section IV, the Richland Township Park Board voted on January 24, 2022 recommending the Richland Township Board adopt the Recreation Plan.

On \_\_\_\_\_ the Richland Township Board adopted the Recreation Plan by resolution \_\_\_\_\_ after holding a final public hearing.

Copies of the Richland Township Recreation Plan were transmitted to the Saginaw County Planning office, the East Central Michigan Planning and Development Region, and the Michigan Department of Natural Resources January \_\_\_\_\_, 2022.

Copies of the notification advertisements, the public hearing minutes, resolutions, and transmittal letters to the planning agencies are included in Appendix C.



DRAFT

## Appendix A

### Parks and Recreation Budget Information

---



REVENUE REPORT

Page: 1  
10/20/2021  
5:13 pm

Richland Township

For the Period: 4/1/2020 to 3/31/2021

	Original Bud.	Amended Bud.	Annual Actual	CURR MTH	Encumb. YTD	UnencBal	% Bud
<b>Fund: 208 - PARK FUND</b>							
Revenues							
Dept: 000.000							
401.000 BALANCE FORWARD	43,671.00	43,671.00	0.00	0.00	0.00	43,671.00	0.0
401.208 BAL. FORWARD - RESTRICTED	15,000.00	15,000.00	0.00	0.00	0.00	15,000.00	0.0
Dept: 000.000	58,671.00	58,671.00	0.00	0.00	0.00	58,671.00	0.0
Dept: 002.000 TAXES CONTROL							
402.000 CURRENT TAXES	141,000.00	141,000.00	142,648.06	136,658.67	0.00	-1,648.06	101.2
TAXES CONTROL	141,000.00	141,000.00	142,648.06	136,658.67	0.00	-1,648.06	101.2
Dept: 009.000 INTEREST & RENTS CONTROL							
365.000 INTEREST EARNINGS	730.00	730.00	886.93	0.00	0.00	-156.93	121.5
INTEREST & RENTS CONTROL	730.00	730.00	886.93	0.00	0.00	-156.93	121.5
Dept: 010.000 OTHER REVENUE CONTROL							
301.000 REC. PROGRAM REGISTRATION FEES	525.00	525.00	0.00	0.00	0.00	525.00	0.0
376.208 Concert Sponsorship	5,300.00	5,299.50	0.00	0.00	0.00	5,299.50	0.0
376.336 FIRE WITH RECLAS	700.00	700.00	1,106.00	0.00	0.00	-406.00	158.0
378.000 RESERVATIONS	2,000.00	2,000.00	5,285.00	1,460.00	0.00	-3,285.00	264.3
388.000 MISCELLANEOUS	0.00	0.00	130.00	0.00	0.00	-130.00	0.0
OTHER REVENUE CONTROL	8,525.00	8,524.50	6,521.00	1,460.00	0.00	2,003.50	76.5
Revenues	208,926.00	208,925.50	150,055.99	138,118.67	0.00	58,869.51	71.8
Grand Total Net Effect:	208,926.00	208,925.50	150,055.99	138,118.67	0.00	58,869.51	

## EXPENDITURE REPORT

Page: 1  
10/20/2021  
5:13 pm

Richland Township

For the Period: 4/1/2020 to 3/31/2021

	Original Bud.	Amended Bud.	Annual Actual	CURR MTH	Encumb. YTD	UnencBal	% Bud
<b>Fund: 208 - PARK FUND</b>							
Expenditures							
Dept: 750.000 PARK BOARD							
*02.300 SALARIES ADMINISTRATION	62.50	62.50	0.00	0.00	0.00	62.50	0.0
*20.000 FEES AND PER-DIEM	3,200.00	3,200.00	3,065.00	0.00	0.00	135.00	95.8
*02.000 CONSULTANT FEES	0.00	0.00	87.50	0.00	0.00	-87.50	0.0
*03.000 AUDIT FEES	400.00	400.00	404.75	0.00	0.00	-4.75	101.2
*04.000 COMPUTER FEES	1,600.00	1,600.00	1,600.00	0.00	0.00	0.00	100.0
*80.000 RECREATION PROGRAM	5,000.00	5,000.00	0.00	0.00	0.00	5,000.00	0.0
*80.100 SUMMER CONCERTS	6,000.00	6,000.00	731.75	367.00	0.00	5,268.25	12.2
*00.000 PRINTING AND PUBLISHING	600.00	600.00	0.00	0.00	0.00	600.00	0.0
PARK BOARD	16,862.50	16,862.50	389.00	367.00	0.00	10,973.50	34.9
Dept: 751.000 RECREATION / PARKS							
*02.000 SALARIES - FULL TIME	41,248.00	42,248.00	41,406.08	3,331.52	0.00	841.92	98.0
*03.000 SALARIES - PART TIME	18,000.00	18,000.00	20,747.50	173.70	0.00	252.50	98.8
*10.000 FRINGE BENEFITS	6,400.00	6,400.00	6,400.00	0.00	0.00	0.00	100.0
*27.000 OPERATING SUPPLIES	450.00	5,450.00	3,199.37	248.58	0.00	2,250.63	58.7
*35.000 UNIFORMS AND CLEANING	0.00	270.00	0.00	0.00	0.00	270.00	0.0
*40.000 TOOLS & SUPPLIES	700.00	1,520.00	1,480.41	0.00	0.00	39.59	97.4
*50.000 REPAIRS AND MAINTENANCE	8,100.00	7,300.00	6,801.79	0.00	0.00	498.21	93.2
*09.000 CONTRACTUAL SERVICES	10,000.00	10,000.00	8,739.05	280.00	0.00	1,260.95	87.4
*20.000 INSURANCE	1,597.00	1,597.00	1,592.20	0.00	0.00	4.80	99.7
*20.000 PUBLIC UTILITIES	9,000.00	9,300.00	9,272.12	1,816.82	0.00	27.88	99.7
*21.000 TELEPHONE	1,290.00	1,290.00	1,081.84	218.77	0.00	208.16	83.9
*40.000 EQUIPMENT RENTAL	450.00	150.00	0.00	0.00	0.00	150.00	0.0
*40.300 Fuel	2,400.00	1,600.00	1,475.40	70.17	0.00	124.60	92.2
*55.000 MISCELLANEOUS	0.00	800.00	779.42	0.00	0.00	20.58	97.4
*70.000 CAPITAL OUTLAY	4,950.00	4,950.00	2,000.00	0.00	0.00	2,950.00	40.4
*74.000 PARK LTG. PROJECT	31,596.00	31,596.00	6,440.30	1,060.05	0.00	25,155.70	20.4
RECREATION / PARKS	145,471.00	145,471.00	111,415.48	7,199.61	0.00	34,055.52	76.6
Dept: 890.000 CONTINGENCY							
*98.000 RESERVE	40,585.00	40,585.00	0.00	0.00	0.00	40,585.00	0.0
CONTINGENCY	40,585.00	40,585.00	0.00	0.00	0.00	40,585.00	0.0
Dept: 998.000 TRANSFERS OUT							
*99.007 TRANS OUT DRAIN - HEMLOCK TILE	6,007.00	6,007.00	6,007.00	0.00	0.00	0.00	100.0
TRANSFERS OUT	6,007.00	6,007.00	6,007.00	0.00	0.00	0.00	100.0
Expenditures	208,925.50	208,925.50	123,311.48	7,566.61	0.00	85,614.02	59.0
Grand Total Net Effect:	-208,925.50	-208,925.50	-123,311.48	-7,566.61	0.00	-85,614.02	

REVENUE REPORT

Page: 1  
10/20/2021  
5:15 pm

Richland Township

For the Period: 4/1/2021 to 3/31/2022	Original Bud.	Amended Bud.	YTD Actual	CURR MTH	Encumb. YTD	UnencBal	% Bud
<b>Fund: 208 - PARK FUND</b>							
Revenues							
Dept: 000.000							
101.000 BALANCE FORWARD	62,624.00	62,624.00	0.00	0.00	0.00	62,624.00	0.0
101.208 BAL. FORWARD - RESTRICTED	15,000.00	15,000.00	0.00	0.00	0.00	15,000.00	0.0
Dept: 000.000	77,624.00	77,624.00	0.00	0.00	0.00	77,624.00	0.0
Dept: 002.000 TAXES CONTROL							
102.000 CURRENT TAXES	145,842.00	145,842.00	5,058.56	0.00	0.00	140,783.44	3.5
TAXES CONTROL	145,842.00	145,842.00	5,058.56	0.00	0.00	140,783.44	3.5
Dept: 009.000 INTEREST & RENTS CONTROL							
105.000 INTEREST EARNINGS	222.00	222.00	0.00	0.00	0.00	222.00	0.0
INTEREST & RENTS CONTROL	222.00	222.00	0.00	0.00	0.00	222.00	0.0
Dept: 010.000 OTHER REVENUE CONTROL							
101.000 REC. PROGRAM REGISTRATION FEES	0.00	0.00	489.00	0.00	0.00	-489.00	0.0
176.208 Concert Sponsorship	2,650.00	2,650.00	0.00	0.00	0.00	2,650.00	0.0
176.336 FIRE WITH RECLAS	700.00	700.00	700.00	0.00	0.00	0.00	100.0
178.000 RESERVATIONS	2,000.00	2,000.00	4,020.00	0.00	0.00	-2,020.00	201.0
188.000 MISCELLANEOUS	0.00	0.00	1,432.59	0.00	0.00	-1,432.59	0.0
OTHER REVENUE CONTROL	5,350.00	5,350.00	6,641.59	0.00	0.00	-1,291.59	124.1
Revenues	229,038.00	229,038.00	11,700.15	0.00	0.00	217,337.85	5.1
Grand Total Net Effect:	229,038.00	229,038.00	11,700.15	0.00	0.00	217,337.85	

## EXPENDITURE REPORT

Page: 1  
10/20/2021  
5:15 pm

Richland Township

For the Period: 4/1/2021 to 3/31/2022	Original Bud.	Amended Bud.	YTD Actual	CURR MTH	Encumb. YTD	UnencBal	% Bud
<b>Fund: 208 - PARK FUND</b>							
<b>Expenditures</b>							
Dept: 750.000 PARK BOARD							
20.000 FEES AND PER-DIEM	3,200.00	3,200.00	1,545.00	0.00	0.00	1,655.00	48.3
02.000 CONSULTANT FEES	0.00	0.00	462.50	0.00	0.00	-462.50	0.0
03.000 AUDIT FEES	407.00	407.00	284.55	0.00	0.00	122.45	69.9
04.000 COMPUTER FEES	1,600.00	1,600.00	0.00	0.00	0.00	1,600.00	0.0
80.000 RECREATION PROGRAM	2,500.00	2,500.00	434.27	0.00	0.00	2,065.73	17.4
80.100 SUMMER CONCERTS	4,500.00	4,500.00	717.00	0.00	0.00	3,783.00	15.9
00.000 PRINTING AND PUBLISHING	400.00	400.00	29.25	0.00	0.00	370.75	7.3
PARK BOARD	12,607.00	12,607.00	3,472.57	0.00	0.00	9,134.43	27.5
Dept: 751.000 RECREATION / PARKS							
02.000 SALARIES - FULL TIME	41,784.00	41,784.00	23,017.96	0.00	0.00	18,766.04	55.1
03.000 SALARIES - PART TIME	20,000.00	20,000.00	22,841.55	0.00	0.00	-2,841.55	114.2
10.000 FRINGE BENEFITS	6,484.00	6,484.00	3,242.00	0.00	0.00	3,242.00	50.0
27.000 OPERATING SUPPLIES	6,000.00	6,000.00	6,994.97	0.00	0.00	-994.97	116.6
35.000 UNIFORMS AND CLEANING	270.00	270.00	0.00	0.00	0.00	270.00	0.0
40.000 TOOLS & SUPPLIES	1,400.00	1,400.00	0.00	0.00	0.00	1,400.00	0.0
50.000 REPAIRS AND MAINTENANCE	8,100.00	8,100.00	596.00	0.00	0.00	7,504.00	7.4
09.000 CONTRACTUAL SERVICES	10,000.00	10,000.00	6,652.05	0.00	0.00	3,347.95	66.5
20.000 INSURANCE	1,692.00	1,692.00	1,648.00	0.00	0.00	44.00	97.4
20.000 PUBLIC UTILITIES	10,550.00	10,550.00	4,742.62	0.00	0.00	5,807.38	45.0
21.000 TELEPHONE	1,290.00	1,290.00	658.31	0.00	0.00	631.69	51.0
40.000 EQUIPMENT RENTAL	400.00	400.00	0.00	0.00	0.00	400.00	0.0
40.300 Fuel	2,400.00	2,400.00	1,764.73	0.00	0.00	635.27	73.5
55.000 MISCELLANEOUS	0.00	0.00	30.00	0.00	0.00	-30.00	0.0
70.000 CAPITAL OUTLAY	8,000.00	8,000.00	2,601.08	0.00	0.00	5,398.92	32.5
74.000 PARK LTG. PROJECT	20,000.00	20,000.00	6,360.30	0.00	0.00	13,639.70	31.8
RECREATION / PARKS	138,370.00	138,370.00	81,149.57	0.00	0.00	57,220.43	58.6
Dept: 890.000 CONTINGENCY							
98.000 RESERVE	72,161.00	72,161.00	0.00	0.00	0.00	72,161.00	0.0
CONTINGENCY	72,161.00	72,161.00	0.00	0.00	0.00	72,161.00	0.0
Dept: 998.000 TRANSFERS OUT							
99.007 TRANS OUT DRAIN - HEMLOCK TILE	5,900.00	5,900.00	0.00	0.00	0.00	5,900.00	0.0
TRANSFERS OUT	5,900.00	5,900.00	0.00	0.00	0.00	5,900.00	0.0
Expenditures	229,038.00	229,038.00	84,622.14	0.00	0.00	144,415.86	36.9
Grand Total Net Effect:	-229,038.00	-229,038.00	-84,622.14	0.00	0.00	-144,415.86	



DRAFT

## Appendix B

### Notice of Open House Meeting Public Meeting Input Flyer

## **RICHLAND TOWNSHIP RECREATION PLAN**

# **OPEN HOUSE**

The Township is developing a recreational plan to help guide us through the next five (5) years. We would like to hear ideas from residents and key stakeholders about recreational programs and park facilities in Richland Township.

**Monday, November 1, 2021 @ 6:00 p.m.**

**Township Hall, 1180 N. Hemlock Rd.**

Following the Open House will be our normal monthly board meeting at 7:00 p.m.



**HELP PLAN THE FUTURE OF OUR COMMUNITY!**



## **RICHLAND TOWNSHIP RECREATION PLAN**

# **PUBLIC HEARING**

The Township is developing a recreational plan to help guide us through the next five (5) years. We would like to hear ideas from residents and key stakeholders about recreational programs and park facilities in Richland Township.

**Monday, December 6, 2021 @ 6:00 p.m.**

**Township Hall, 1180 N. Hemlock Rd.**

Following the Open House will be our normal monthly board meeting at 7:00 p.m.



**HELP PLAN THE FUTURE OF OUR COMMUNITY!**

## Richland Township Park Survey 2021

We would love to hear your thoughts or feedback on how we can improve your experience!

\* Required

1. 1. What is your age? \*

Mark only one oval.

- ☐ 20 and under  
☐ 21-30  
☐ 31-40  
☐ 41-50  
☐ 51-60  
☐ 61 and Over

2. 2. What is your gender? \*

Mark only one oval.

- ☐ Male  
☐ Female  
☐ Other: \_\_\_\_\_

3. 3. Are you a Richland Township Resident? \*

Mark only one oval.

- ☐ Yes  
☐ No

4. 4. How far do you travel to get to the park? \*

Mark only one oval.

- ☐ 0 to 1/4 mile away  
☐ 1/4 mile to 1/2 mile away  
☐ 1/2 mile to 3/4 mile away  
☐ 3/4 mile to 1 mile away  
☐ Over 1 mile  
☐ Over 5 miles

DRAFT



5. 5. If any, what are the ages of children in your household? (Check all that apply) \*

*Check all that apply.*

- ☐ 5 and under  
☐ 6 to 10  
☐ 11 to 15  
☐ 16 to 18  
☐ No Children

6. 6. How often do you use the park? \*

*Mark only one oval.*

- ☐ Daily  
☐ Weekly  
☐ Monthly  
☐ Occasionally  
☐ Rarely

7. 7. In general, do you come alone or with others when visiting the park? \*

*Mark only one oval.*

- ☐ Alone  
☐ With others

DRAFT

8. 8. Why do you visit the park? (Check all that apply) \*

*Check all that apply.*

- ☐ Biking
- ☐ Play Sports
- ☐ Relax
- ☐ Volunteer
- ☐ Walking Dog
- ☐ Walking
- ☐ Shuffle Board
- ☐ Farmer's Market
- ☐ Bring Children
- ☐ Event
- ☐ Sightseeing
- ☐ Ice Skating
- ☐ Time with family and/or friends
- ☐ Exercise or Jog
- ☐ Disc Golf
- ☐ Watch Sports

Other: ☐ \_\_\_\_\_

9. 9. Have you or your children ever participated in an event or organized program in the park? \*

*Mark only one oval.*

- ☐ Often
- ☐ Sometimes
- ☐ Never
- ☐ Did not know there were organized programs or events at the park.

10. 10. If you have participated in an event or organized program in the park, what event or program have you participated in?

---

---

---

---

---

11. 11. In you have not participated in an event or organized program in the park, what would you like to see at the park?

---

---

---

---

---

12. 12. Please rate the condition of the play equipment or courts in the park with five being the highest. \*

*Mark only one oval.*

1	2	3	4	5
<input type="radio"/>	<input type="radio"/>	<input type="radio"/>	<input type="radio"/>	<input type="radio"/>

13. 13. Is there enough space in the park for activities? \*

*Mark only one oval.*

☐ Yes  
☐ No

DRAFT

14. 14. What are your priorities for the Richland Township Park? What would you like to see in the park?  
(Check all that apply) \*

*Check all that apply.*

- ☐ More Paths
- ☐ Public Art
- ☐ Recreation/Sport Program
- ☐ Security
- ☐ Signage
- ☐ Dog Run
- ☐ Drinking Fountains
- ☐ Concert in the Park
- ☐ Available Park Staff
- ☐ Benches/Tables
- ☐ Children's Play Equipment
- ☐ Improved Park Lighting
- ☐ More Fitness/Workout Equipment
- ☐ More Sport Courts/Fields
- ☐ Accessible for all Abilities
- ☐ More Exercise Programming

Other: ☐ \_\_\_\_\_

15. 15. Of the priorities checked above, which ones are your top three priorities? \*

*Check all that apply.*

- ☐ More Paths
- ☐ Public Art
- ☐ Recreation/Sport Program
- ☐ Security
- ☐ Signage
- ☐ Dog Runs
- ☐ Drinking Fountains
- ☐ Available Park Staff
- ☐ Benches/Tables
- ☐ Children's Play Equipment
- ☐ Improved Park Lighting
- ☐ More Fitness/Workout Equipment
- ☐ More Sport Courts/Fields
- ☐ Accessible for all Abilities
- ☐ Concert in the Park
- ☐ More Exercise Programming

Other: ☐ \_\_\_\_\_



16. 16. What is your overall opinion of the Richland Township Park?

*Mark only one oval.*

- ☐ Excellent  
☐ Very Good  
☐ Fair  
☐ Poor  
☐ No Opinion

17. Suggestions for improvement and or other comments.

---

---

---

---

18. Name (Optional)

---

This content is neither created nor endorsed by Google.

Google Forms

DRAFT

DRAFT

## Appendix C

Notice of the Draft Plan for Review  
Notice of Public Hearing's  
Minutes From Public Hearing  
Park Board Minutes Recommending Township Board  
Pass a Resolution of Recreation  
Plans Adoption  
Certified Public Resolution for Township Board  
Adoption  
Transmittal Letters

NOTICE OF PLAN DRAFT REVIEW WILL GO HERE

DRAFT

## NOTICE OF PUBLIC HEARING (S)

DRAFT



MINUTES FROM PUBLIC HEARING WILL GO HEAR

DRAFT

## Park Board Minutes Recommending Township Board

DRAFT

## **PLANS ADOPTION BY TOWNSHIP BOARD**

# Certified Public Resolution for Township Board Adoption



## LETTER TO COUNTY PLANNING COMMISSION

## LETTER TO EAST CENTRAL MICHIGAN PLANNING & DEVELOPMENT

## LETTERS TO ADJOINING TOWNSHIPS & SCHOOL

## Appendix D

### DNR Checklist



## DNR CHECKLIST

## DNR CHECKLIST