



**PARK TOWNSHIP
FIRE DEPARTMENT
2021 ANNUAL REPORT**



PARK TOWNSHIP FIRE DEPARTMENT

HISTORY OF FIRE DEPARTMENT

In 1946 a committee was appointed to investigate fire protection for the township. At the February 1947 election, the Township Board was authorized by the voters to purchase and house firefighting equipment. This station, located on Myrtle Avenue, served the south side of Park Township and the part of Holland Township lying south of 16th Street. The Holland Township Fire Department served the north part of Holland Township and the north part of Park Township. Prior to this time, the entire area was served by the City of Holland.

In 1949 an addition was built on the south side fire station. In 1951 a new fire station was built on Ottawa Beach Road for the north side. When the area where the south side fire station was located was annexed to the city in 1959, a new fire station was built in Virginia Park. The station in South Park Township is known as Station # 1 and the station in north Park Township is known as Station #2.

In 1996 a new fire station was built in north Park Township at 12 S. 160th Avenue, on the corner of S. 160th Avenue and Perry Street. This station continues to be known as Station #2 and is Central Station.

In 2003 a new fire station was built, jointly between Park Township and the City of Holland, at 644 S. 160th Avenue in South Park Township. This station houses Park Township Station #1 and the City of Holland Station #3 and is known as the Virginia Park Fire Station.

Mission Statement

The Park Township Fire Department is a paid-on-call department of men and women who are dedicated to protecting and educating our community to prevent loss of lives and property without unduly risking their own lives and equipment. This mission is to be executed professionally, timely, and with determination to continually improve our quality, while always maintaining a professional and positive customer service attitude.

Core Values

To Our Residents: We owe the residents of Park Township the highest quality of service possible, characterized by responsiveness, integrity, and professionalism. We will continually strive for quality improvement.

To Our Fire Department: We owe the Park Township Fire Department our commitment and dedication. We will always look beyond the traditional scope of our individual positions to promote teamwork and organizational effectiveness.

To Each Other: We owe each other a working environment characterized by trust and respect for the individual, fostering open and honest communication at all levels.

To Ourselves: We owe ourselves personal and professional growth. We will seek new knowledge and greater challenges, and strive to remain at the leading edge of our profession.

GENERAL INFORMATION

Park Township is located in Ottawa County in southwest Lower Michigan, along the shoreline of Lake Michigan. The thirty- six square miles are protected by two fire stations, one on each side of inland Lake Macatawa, which divides the township in half. It is a twenty-five-minute drive around Lake Macatawa to access each half of the township, traveling through two other jurisdictions.

Approximately fifteen square miles of the township are covered by lakes. The remaining twenty-one square miles of land are primarily zoned residential and agricultural. Park Township has eighteen miles of shoreline between Lake Michigan and Lake Macatawa and we protect land and water.

The Park Township Fire Department also protects multiple critical infrastructures:

- two public water treatment plants which service large cities as far as 60 miles to the east of us,
- an AT&T Communication Transmission Center
- and -the Wolverine Gas Pipeline.

Park Township Fire Department is the first- due response to each of these critical infrastructures. In addition, we protect a United States Coast Guard Station located within our jurisdiction and a small, private airport. We have multiple marinas and our area is a summer vacation destination. The majority of our residents work outside of our township. Many of our subdivisions are high-end housing. We have no industry and minimal commercial property, with the exception of marinas.

In addition to fire protection of infrastructures, residences, public buildings, schools, boats, marinas, and wildfires, we respond to medical emergencies, water, and ice rescues, CO alarm activations, gas leaks, and electrical stand-bys, smoke and odor investigations, weather-related emergencies and extrications from motor vehicle accidents. We have mutual aid agreements with all fire departments in Ottawa and Allegan Counties, as well as participate in state-wide mutual aid agreements. Our most common contribution in a local mutual aid situation is the air refill systems, manpower, and apparatus stand-bys.

STAFFING

We are a paid-on-call department consisting of seven Officers, twenty-eight Firefighters, a Chaplain, and an Office Manager. Much of our operating budget is payroll for twenty-four-hour emergency protection.

2021

Roster

Administrative

Scott Gamby, Fire Chief/FOIII/EMT-B
Andy Slagh, Administrative/Safety Lieutenant/CO/EMT-B/FOIII
Karen Pfeiffer, Office Manager
Bob Carlton, Chaplain

Station #1 - Virginia Park Station

Patrick Gamby, Captain/CO/MFR
Andy Stokes, Lieutenant/CO/EMT-B

Bill Nelson, FF/MFR
Jason Lovell, FF/EMT-Basic
Dan Martinez, FF/EMT-Basic
Sean Reilly, FF/MFR
Ryan Givens, FF/EMT-Paramedic
Jon DeMaat, FF/MFR
Aaron Van Huis, FF
Troy Kassion, FF/MFR
Jesse Walthers, FF/MFR
Jacob Mulder, FF/EMT-Basic
Joseph Gorris, FF/EMT
Corbin Martinez, FF/MFR

Station #2 - Central Station

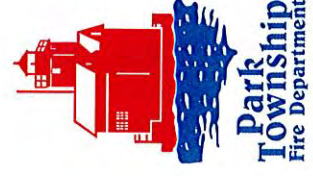
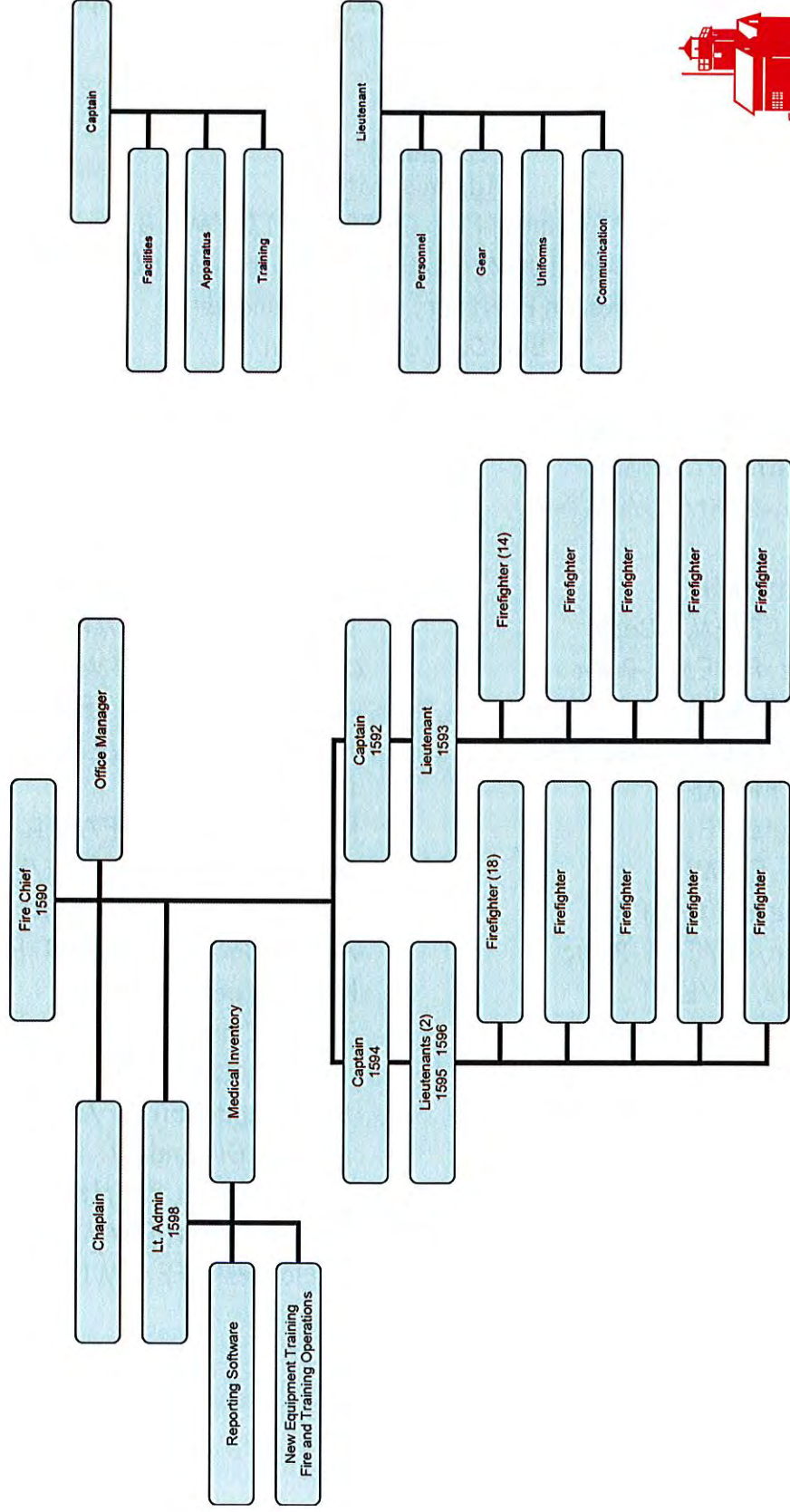
Scott Heerema, Captain/CO/MFR
Cole Middlecamp, Lieutenant/CO/MFR
Todd Garvelink, Lieutenant/CO/MFR
Ron Greendyke, FF/EMT-Basic
Tom Baumann, FF/MFR
Curtis Redder, FF/MFR
Andrew Van Til, FF/EMT-Basic
Tim Vogelzang, FF/EMT-Basic
Paul Sam, FF
Ken Lothschutz, FF/MFR
Drew Schrottenboer, FF/EMT Paramedic
Mike DeWaard, FF/MFR
Angela Badran, FF/EMT-Basic
Kipp Harper, FF/MFR
Joshua Danielson, FF/MFR
Brendon Doyle, FF
Bret Vandebil, FF/MFR
Nicolas Greendyke, FF
Caleb Parker, FF/MFR
Gregory Kett, FF/MFR
Jarid Lesh, FF/EMT

Description of Certifications:

CO: Company Officer
FF: Firefighter
MFR: Medical First Responder
EMT-Basic: Emergency Medical Technician-Basic
EMT-Paramedic: Emergency Medical Technician-Paramedic

PARK TOWNSHIP FIRE DEPARTMENT

Chain of Command and Officer's Roles



2021 ACCOMPLISHMENTS

Personnel Accomplishments and Special Certifications

In addition to two required evening training meetings per month, many of our firefighters attended educational seminars. The Ottawa County Fire Academy is an intensive State certified training for new personnel. Probationary firefighters attend four-hour classes two nights per week plus one Saturday a month for nine months. The Ottawa County Fire Academy and the medical license classes are required to be a member of the fire department; the rest of the seminars were elective as our personnel desired to be better prepared to react to emergencies.

New Hires:

Station #1 - Corbin Martinez

Station #2 - Gregory Kett, Jarid Lesh

2021 Firefighter I & II Fire Academy:

Station #2 - FF Nicolas Greendyke, FF Caleb Parker, FF Bret Vandebil

2021 Medical First Responder:

Station #2 - FF Nicolas Greendyke, FF Caleb Parker, FF Bret Vandebil



Community Involvement and Fire Prevention

2021 was another year unlike any other, our attendance at local CI events were scaled back dramatically due to the pandemic. Normally we attend over twenty-five community events, introducing our department to over 14,000 people, but during 2021, with so many events being canceled, we were present at only the following:

- Spraying water on children following area soccer camps
- Childrens Day at the Ottawa County Fair
- Providing fire standby for Van Andel's fireworks over Lake Michigan on the 4th of July
- Senior day parade
- Veterans Day Truck Parade

We certainly hope to get out and about more often in 2022.

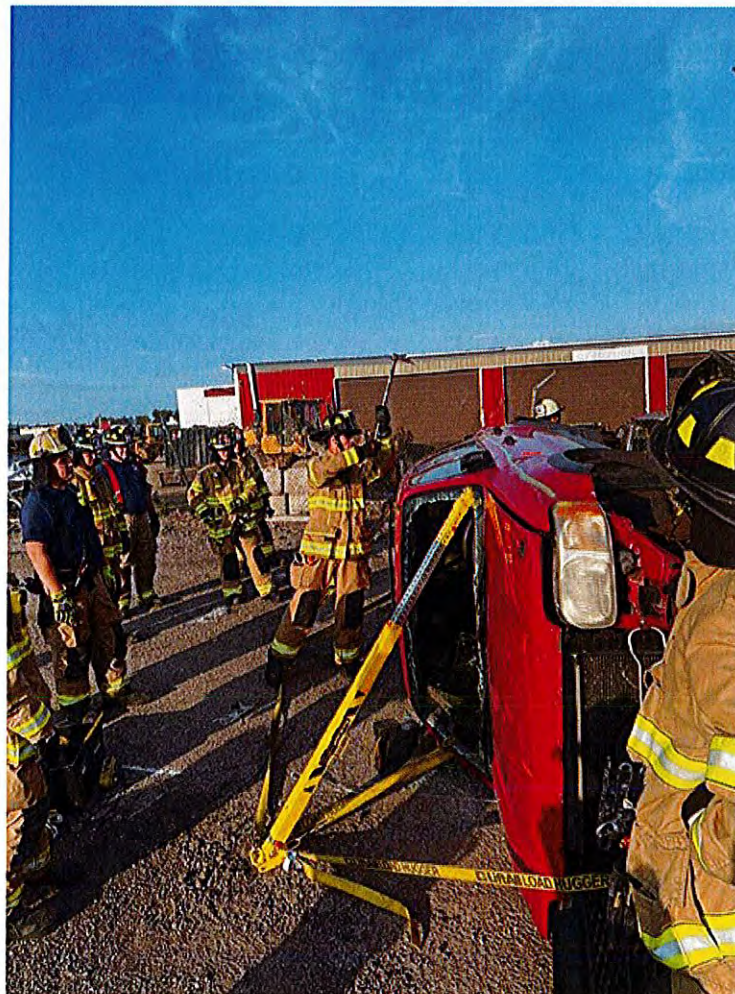


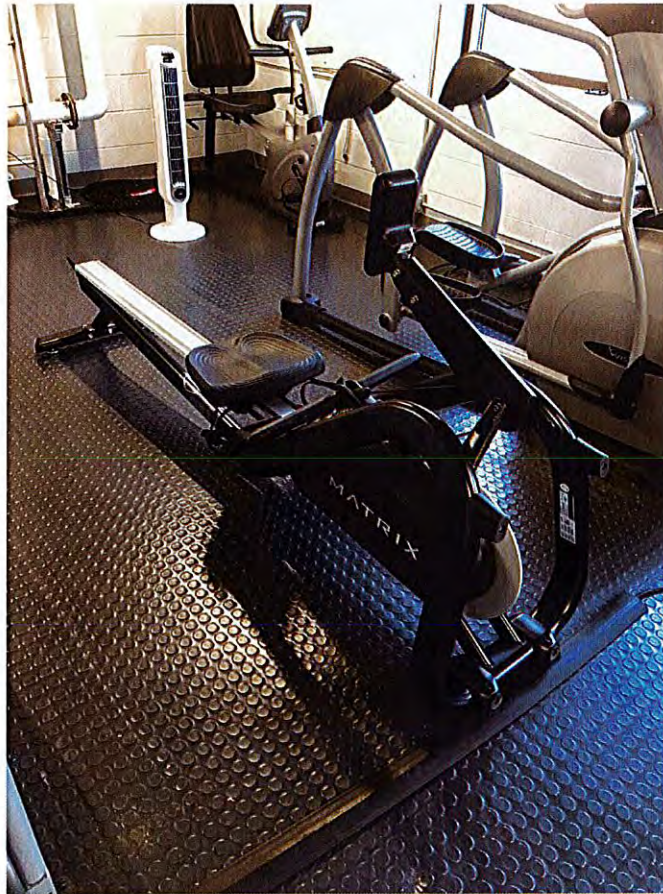


**Lakeside Living
Honoring North Holland's
First Responders
on the
20th Anniversary of 9/11**

The Park Township Fire Department was honored to be asked to participate in this anniversary edition of Lakeside Living's magazine. Our firefighters are part paid on call and do this work because they enjoy working with the public and giving back to the community.

Departmental Projects Accomplished During 2021





Matrix Rower

Physical fitness is one of the top requirements in the fire service, adding this piece of equipment to our wellness center, encourages our firefighters to work out, stay in shape, increase their cardio output, etc. Working out helps with self-esteem and morale. It can also reduce the chances of injuries, which in turn reduces/eliminates workman comp claims. Each station has a wellness center and it is used on a daily basis by many firefighters in the department.



**Arctic 6000psi 10HP single phase SCBA
fill compressor, Electronic CO Monitor
and 75 ft 6000psi air hose**

Currently, we have two SCBA cascade fill systems mounted on 1572 and 1523, this equipment is used to refill SCBA bottles, extrication airbags, and SCBU dive bottles.

PTFD also provides air replenishment support to our mutual aid stations as requested.

After we have depleted the air we carry on these units, we have to refill our air at Holland City Kollen Park Station, this usually takes a couple of hours and is done a few times a month depending on call volume. I propose purchasing an air compressor for the Perry Street Station so we can fill our cascade system back at our own station.

This will allow us to have a better response time if another call comes in our area and would not require the manpower to drive from the north side to the south side for refills.

[illegible]

Quadrant 1502 - 194 Calls

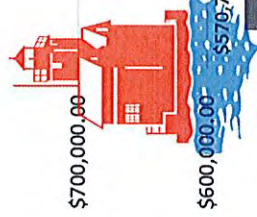
Quadrant 1504 - 28 Calls

Full department - 24 Calls

Mutual Aide - 15 Calls

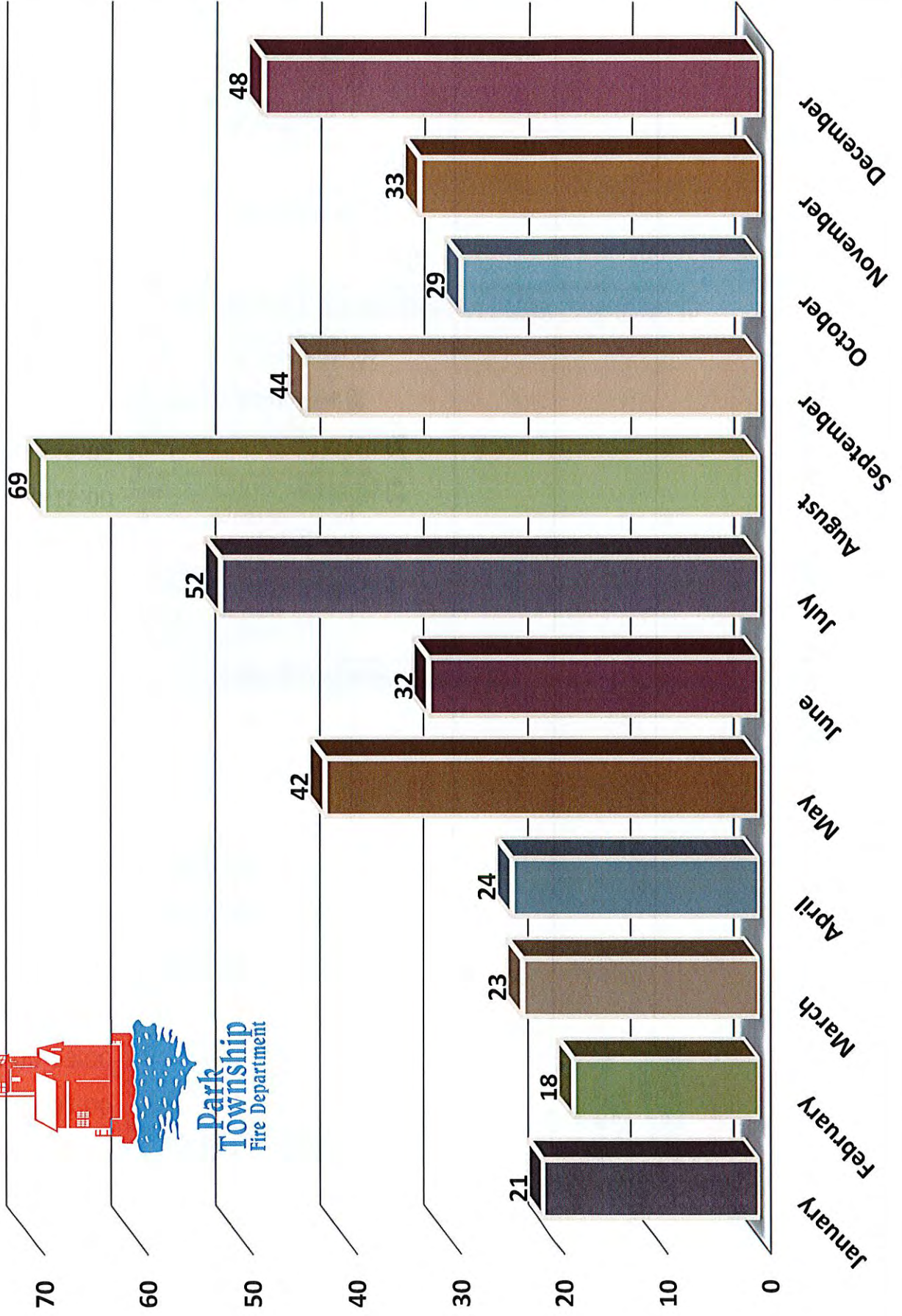
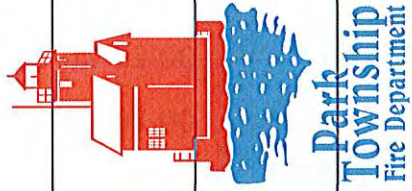
*Does not include interdepartmental mutual aid responses

Fire Department Budget Comparisons

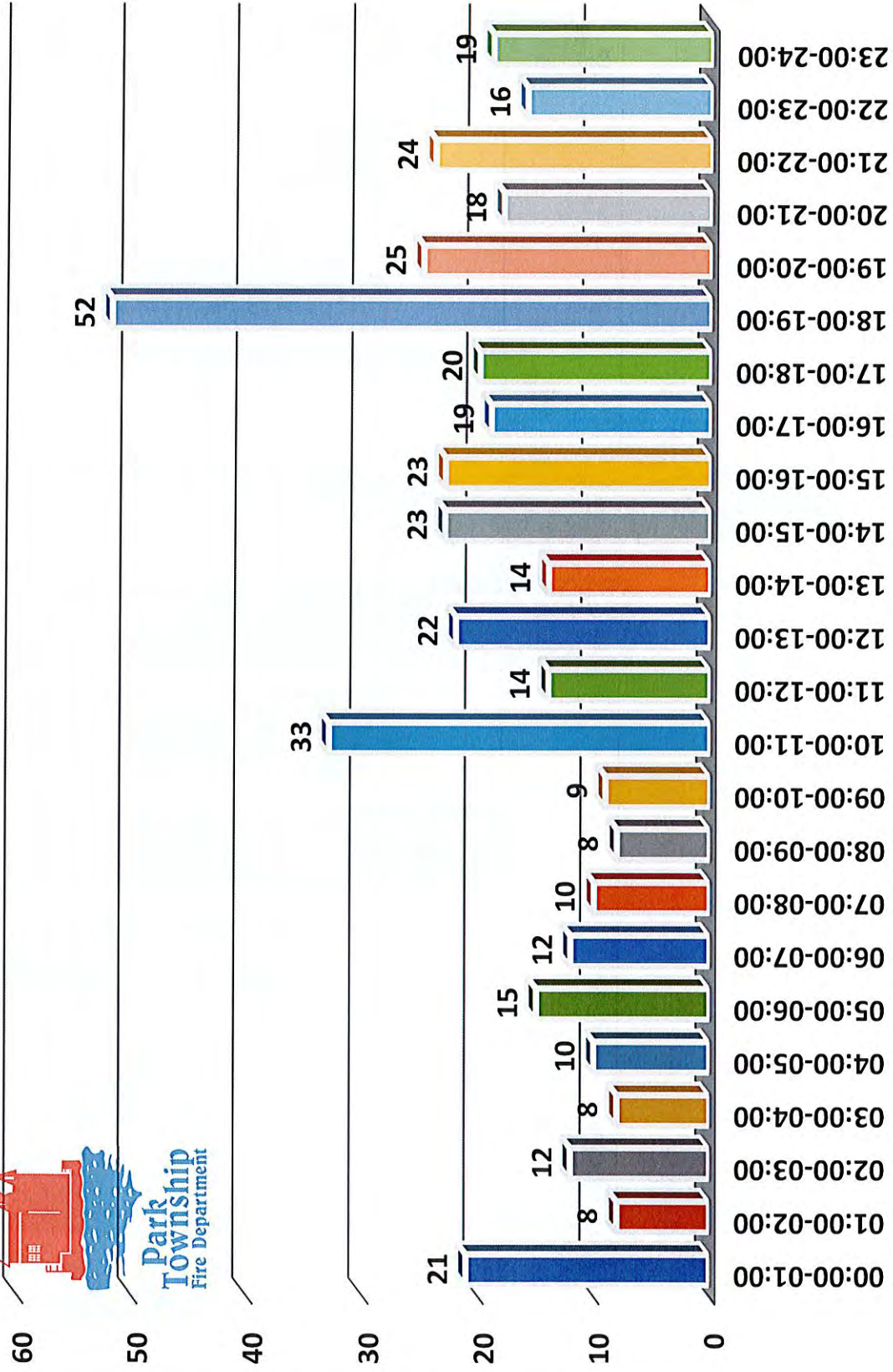
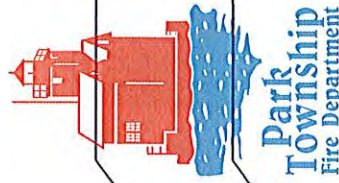


■ Series1 ■ Series2

Calls Per Month (2021)

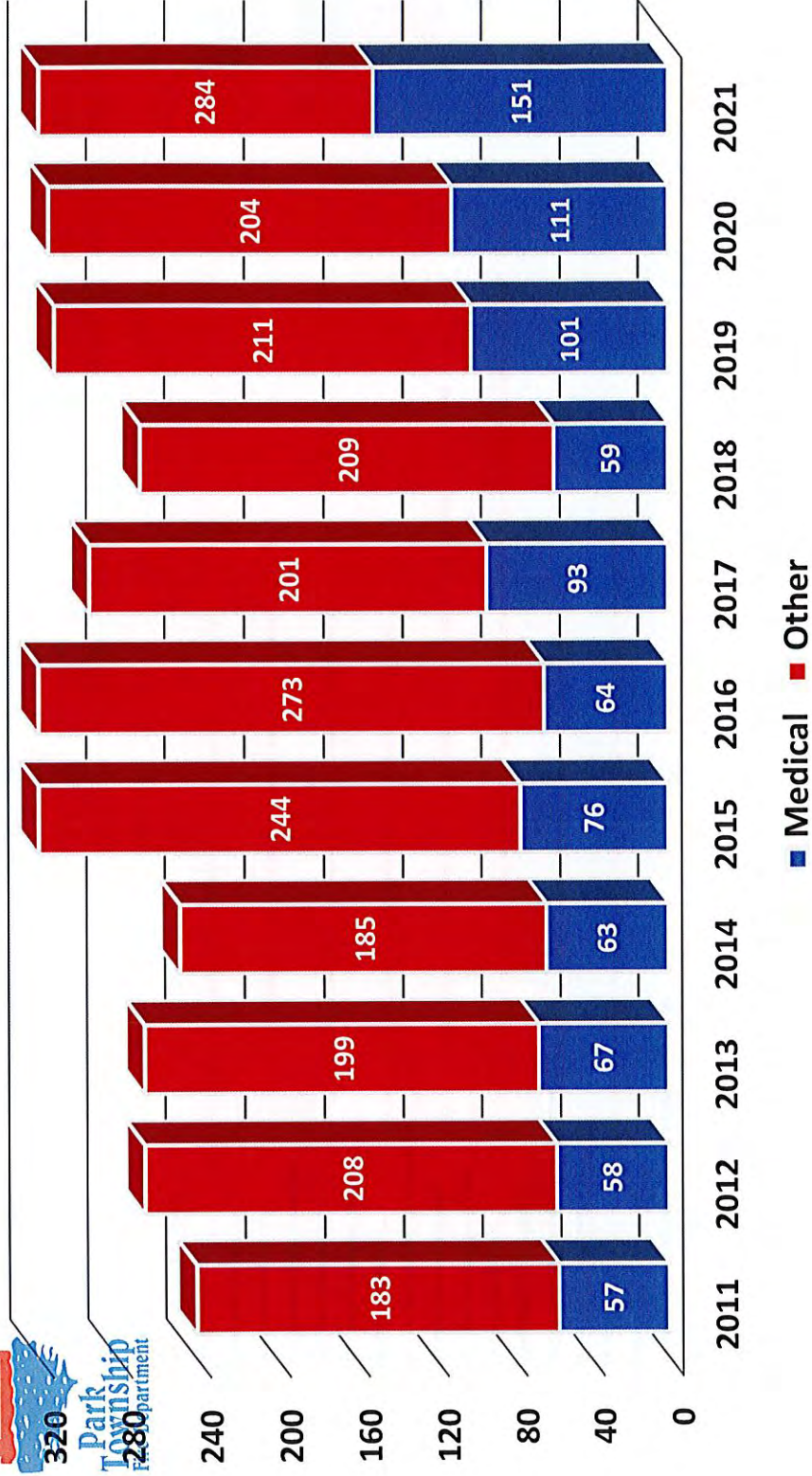


Number of Calls By Hour of Day (2021)



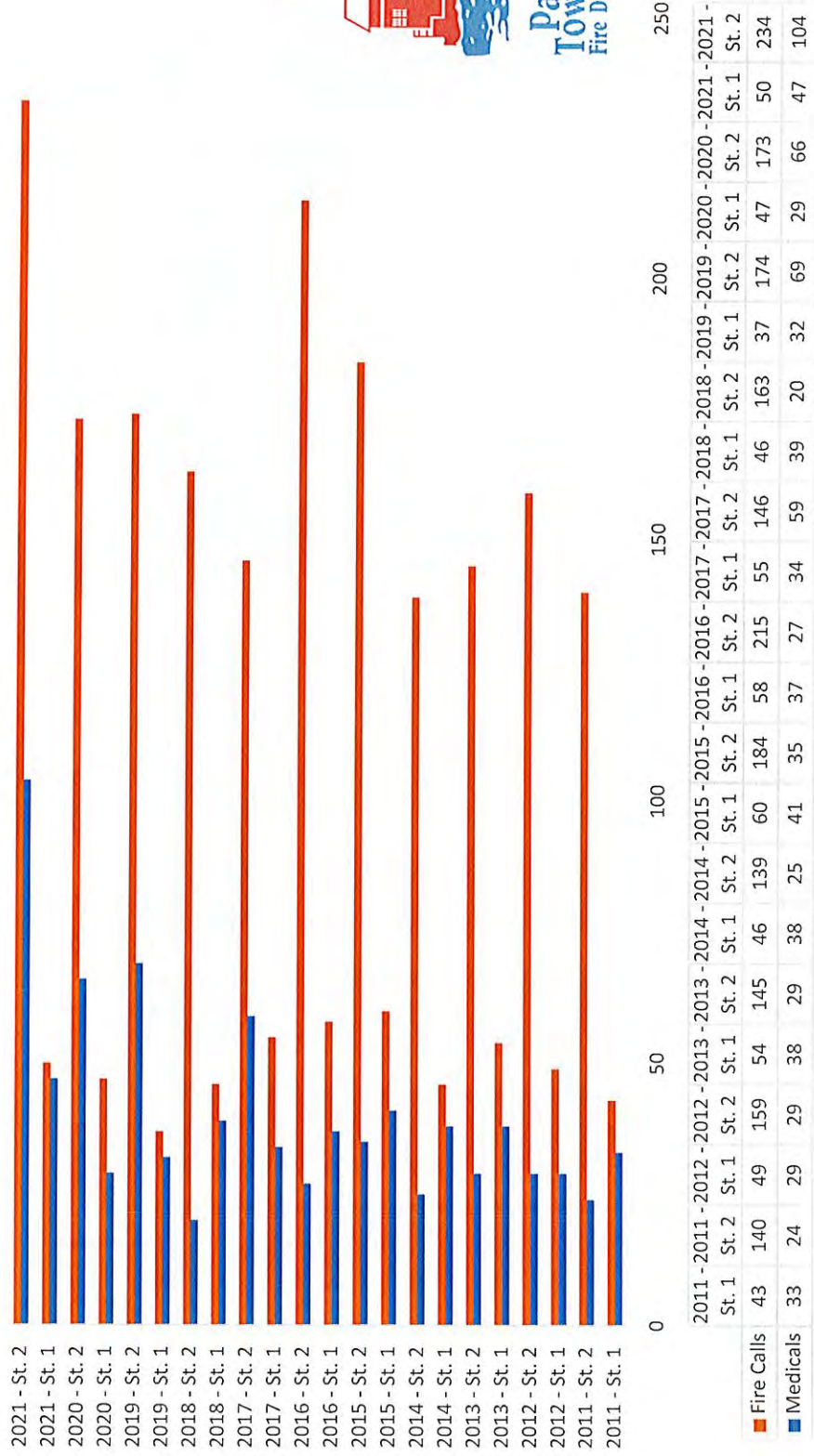


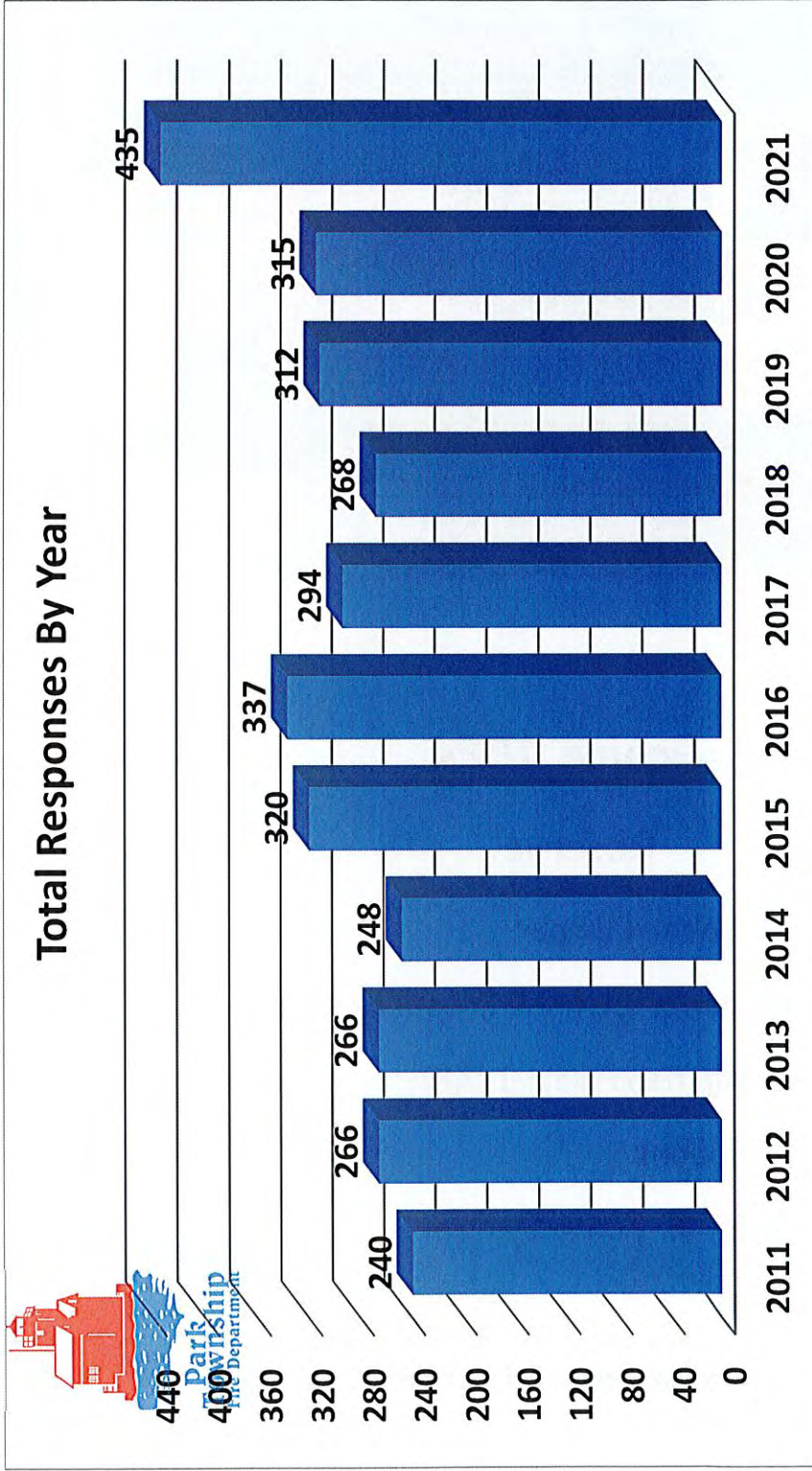
Medical Responses vs. All Other Responses (2011-2021)



Types of Responses (Medicals vs. All Others) Per Year, Per Station

Fire Calls
Medicals







Engine 1524

Reserve

- Year: 1995 Pierce Saber Pumper
- Engine: 300 Horsepower Detroit Diesel Engine
- GPM (Gallons per Minute) Pump: 1,500
- Water Tank: 625 Gallons
- Foam System: Class "A" Foam System
- Number of Seats: 6
- Primary Duties: Reserve Engine for Fire Suppression



Engine 1521

Station #1

- Year: 2018 Pierce PUC Enforcer Pumper
- Engine: 400 Horsepower Cummins Diesel Engine
- GPM (Gallon per Minute) Pump: 1500
- Water Tank: 1000 Gallons
- Foam System: Class "A" Husky 12 Foam System
- Number of Seats: 4
- Number of Air packs: 10
- Primary Duties: First Out Engine; Fire Suppression



Engine 1523

Station #1

- Year: 2006 Pierce Enforcer Pumper Engine
- Engine: 350 Horsepower Cummins Diesel Engine
- GPM (Gallons Per Minute) Pump: 1,500
- Water Tank: 550 Gallons
- Foam System: Class "A" Foam System
- Number of Seats: 4
- Number of Air packs: 10
- Primary Duties: First Out Engine for Fire Suppression; Second Out Engine for all other responses; SCBA Air Bottle Refill System



Command/Rescue Vehicle 1571

Station #1

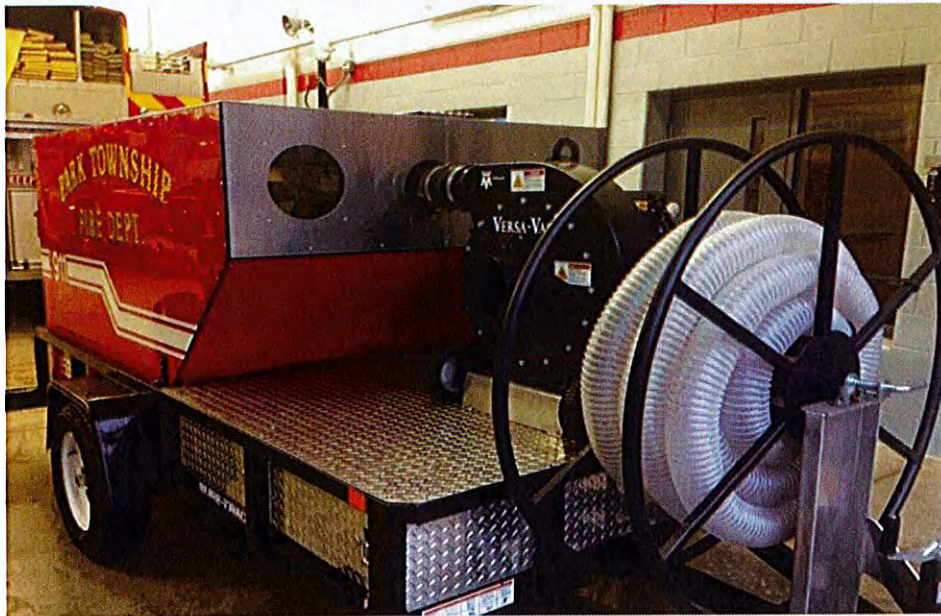
- Year: 2014 Ford Expedition EL 4X4 XL
- Engine 8-5.4L-FI
- VHF and UHF mobile radios
- Command Center
- Medical Response Unit
- Number of seats: 5
- Number of Air packs: 1
- Primary Duties: Command, Medical and Support Vehicle



Ranger 1531

Station #1

- Year: 2008 Polaris Ranger Utility Vehicle (UTV)
- Engine: 700 CC Engine Six-Wheel Drive
- GPM (Gallons Per Minute) Pump: 65
- Water Tank: 95 Gallons
- Foam System: 5 Gallon Class "A" Foam System
- Number of Seats: 3
- Number of Air packs: 0
- Primary Duties: Wildfires, Medical Transports In Remote Areas, Search and Rescue Along Our Shorelines



1533 Insulation Vacuum

Station #1

- Year: 2014
- Trailer: Sure-Trac Utility
- Vacuum: Versa-Vac os
- Engine: 18HP Kohler V-Twin 2cyl. 12V Electric Start
- Primary Duties: This equipment is used to remove the exposed insulation that can contain "hot spots" from an attic fire. Instead of using water/foam to soak down the area and cause a lot of water damage, we will be able to remove the affected area.



Engine 1522

Station #2

- Year: 2018 Pierce PUC Enforcer Pumper
- Engine: 400 Horsepower Cummins Diesel Engine
- GPM (Gallon per Minute) Pump: 1500
- Water Tank: 1000 Gallons
- Foam System: Class "A" Husky 12 Foam System
- Number of Seats: 4
- Number of Air packs: 10
- Primary Duties: First Out Engine; Fire Suppression



Engine 1562

Station #2

- Year: 2002 Pierce Freightliner Pumper-Tanker
- Engine: 450 Horsepower Cummins Diesel Engine
- GPM (Gallons Per Minute) Pump: 1,500
- Water Tank: 2,500 Gallons
- Foam System: Class "A" Foam System
- Number of Seats: 2
- Number of Air packs: 4
- Primary Duties: Water Supply Including a 3,000 Gallon Dump Tank



Engine 1572

Station #2

- Year: 2009 Pierce Saber Rescue
- Engine: 365 Horsepower Cummins Diesel Engine
- GPM (Gallons Per Minute) Pump: NA
- Water Tank: NA
- Foam System: NA
- Number of Seats: 4
- Number of Air packs: 4
- Primary Duties: Medicals, Extrication, Ice and Water Rescues, SCBA Air Bottle Refill System



Brush Truck 1582

Station #2

- Year: 2012 GMC Sierra Heavy Duty K-3500, One Ton, 4 Wheel Drive Pickup Truck
- Engine: 6.0-liter, 322 Horsepower V-8
- GPM (Gallons Per Minute) Pump: 520 From C.E.T. Pump in Skid Unit
- Water Tank: 250 Gallon Poly Tank With a 10 Gallon Foam Cell
- Backup Camera, Provisions for Portable Front and Rear Winch
- Number of Seats: 2
- Number of Air packs: 0
- Bed of Truck Has a C.E.T. Slide-In Firefighting Skid Unit
- Primary Duties: Wildfire Extinguishment; Snow Plowing During Winter Months
- With an 8' 5" Fisher V-Plow



Ranger 1532

Station #2

- Year: 2008 Polaris Ranger Utility Vehicle (UTV)
- Engine: 700 CC Engine Six-Wheel Drive
- GPM (Gallons Per Minute) Pump: 65
- Water Tank: 95 Gallons
- Foam System: 5 Gallon Class "A" Foam System
- Number of Seats: 3
- Number of Air packs: 0
- Primary Duties: Wildfires, Medical Transports in Remote Areas, Search and Rescue Along Our Shorelines.



Community Involvement (CI) Trailer

Station #2

- 2012 5x8 Hauling Utility Trailer
- Led Lights
- 24" side door
- Rear ramp door
- 32" Samsung TV mounted inside
- Insignia sound bar with Bluetooth



PERFORM. LIKE NO OTHER.™

