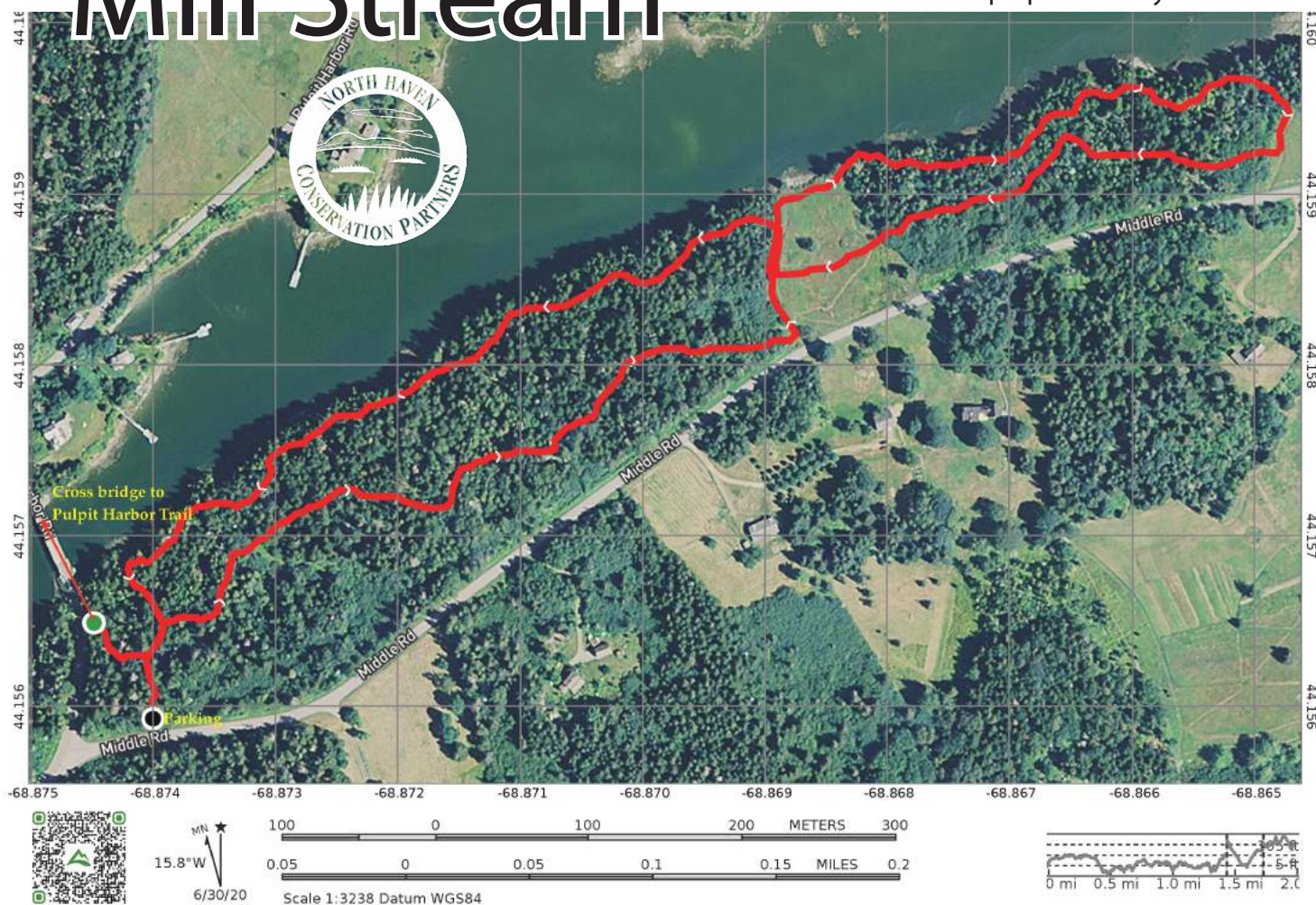


Mill Stream

Map updated July 2020



Situated across First Bridge from NHCP's Pulpit Harbor Preserve, the scenic Mill Stream property protects more than half a mile of shoreline along the south side of the Mill Stream at the top of Pulpit Harbor. At the harbor end of the property, steps up the bank from the road lead to a trail that runs through forest and fields to the eastern end of the property close to Fresh Pond. With the exception of the well-marked but primitive trail, NHCP manages this property as a wildlife preserve, leaving it largely untouched. The diverse habitats, particularly the shoreline and the transitions from field to forest, attract a wide variety of migratory birds. The Mill Stream itself is alive with shore birds, waterfowl and raptors. The fields are in bloom with wildflowers from mid-June. Whether explored on foot or by kayak, this property provides visitors with a true wild Maine island experience. The 22-acre Mill Stream property was an exceptionally generous gift to NHCP from the John D. Rockefeller family in 2001.

Features of Note

- Shoreline access
- Nature and wildlife observation
- Kayaking
- Primitive trail

Please be mindful of the Town Ordinance requiring leashes for dogs.

Access

The trail at the Pulpit Harbor end of the property is accessed by stone steps running up the bank from the road, about 50 yards up from the bridge. Kayaks are most easily launched from the public landing located across the bridge on NHCP's Pulpit Harbor Preserve.

Directions and Parking

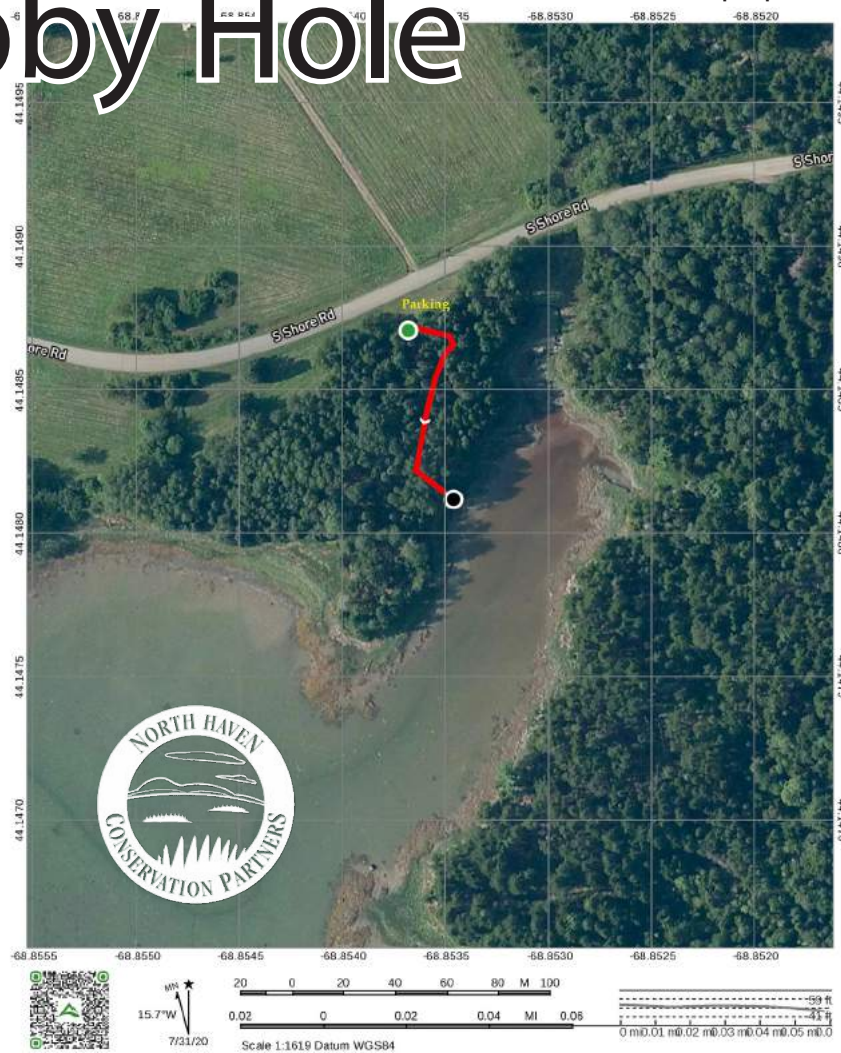
The Mill Stream property begins at the intersection of Middle Road and Pulpit Harbor Road. Parking is available in the small lot at the public landing.

Distance from Downtown

2.3 miles-- 5 min by car, 12 min bike ride

Cubby Hole

Map updated July 2020



NHCP's Cubby Hole conservation easement is an ideal place to launch a kayak to explore the Cubby Hole and beyond to the shorelines of Waterman's Cove and the Fox Islands Thoroughfare. The kayak put in area is a short, easy walk from the parking area. The Cubby Hole itself, along with the uplands that form the tidal basin, is a section of North Haven that contains multiple important Native American archaeological sites. The Cubby Hole drains to mud flat at low tide, so plan your adventures accordingly. NHCP's 11-acre Cubby Hole conservation easement was the gift of Jamie Carpenter and Toshiko Mori in 2009.

Features of Note

- Shoreline access
- Kayak launch area
- Nature and wildlife observation
- Groomed trails

Please be mindful of the Town Ordinance requiring leashes for dogs.

Access

The path to the kayak launch area starts at the small parking area on the water side of South Shore Road. **Please note that public access at the Cubby Hole is limited to the path from the parking area to the kayak launch area only. There is no public access to any of the fields or buildings on the property.**

Directions and Parking

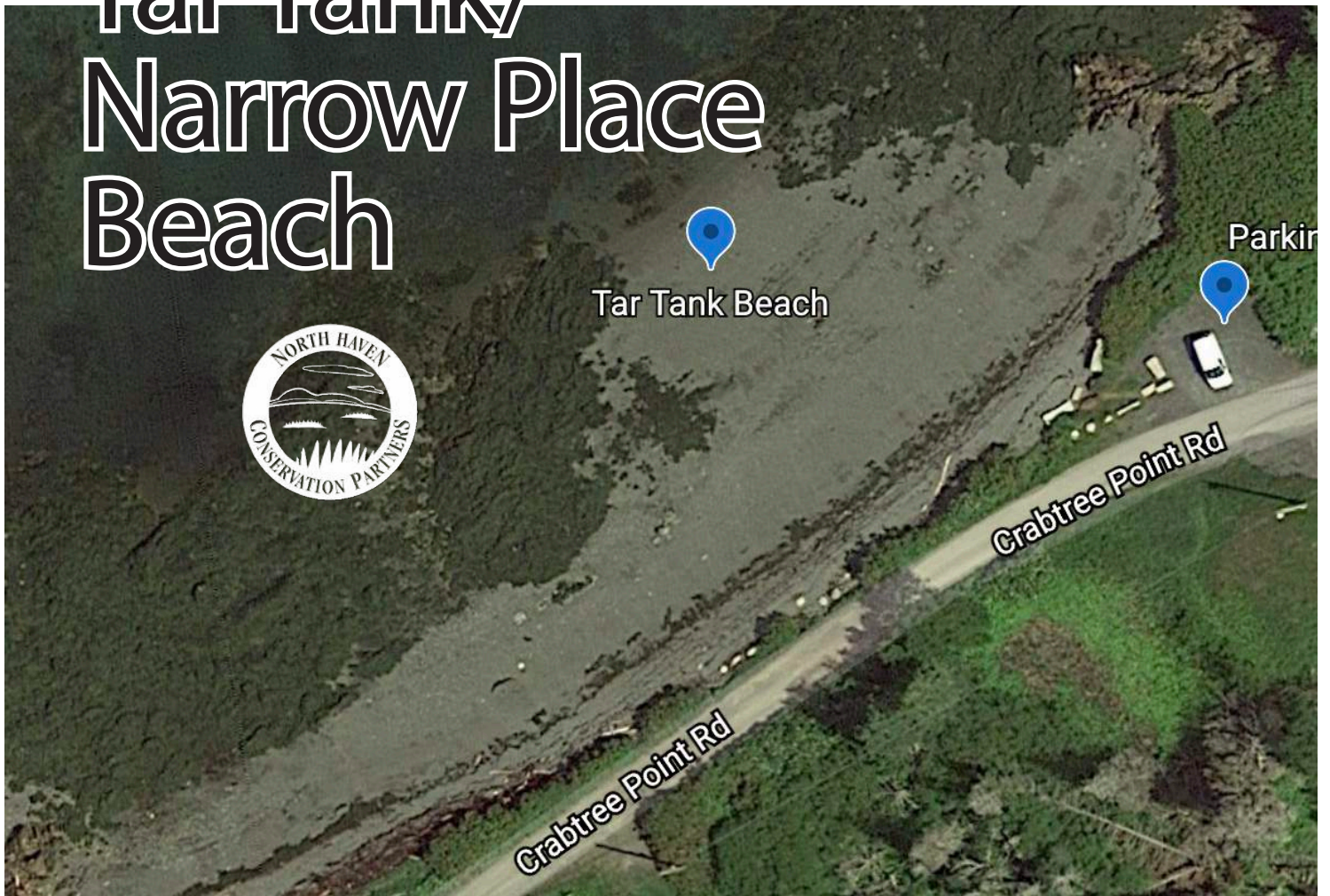
The Cubby Hole is located on water side of South Shore Road, approximately .85 miles from the intersection of Main Street and South Shore Road. A small parking area is located on the right at the end of the field closest to Turner Farm.

Distance from Downtown

2.4 miles-- 5 min by car, 12 min bike ride

Tar Tank/ Narrow Place Beach

Map updated July 2020



Tar Tank beach (AKA Narrow Place beach) is a popular picnic spot and one of the best places on North Haven to watch a summer sunset. Located near the end of Crabtree Point, the beach is on the lee side of the point, protected from the prevailing afternoon southwesterly wind, and offers a panoramic view of West Penobscot Bay and the Camden Hills. Out of respect for our neighbors, the beach is open during daylight hours only. NHCP has owned Tar Tank beach since 2014, when we were able to acquire it from the Perkins and Cobb families through a combination of a generous donation of a portion of the beach and a bargain sale of the balance.

Features of Note

- Shoreline Access
- Great picnic beach
- Accessible at all tides
- Beautiful views and sunsets

Directions and Parking

Tar Tank Beach is at the end of the paved portion of Crabtree Point Road, 3 ³/₄ miles from the North Haven Grange. If the road is unpaved, you've gone too far! The beach is on the right, below a small parking area.

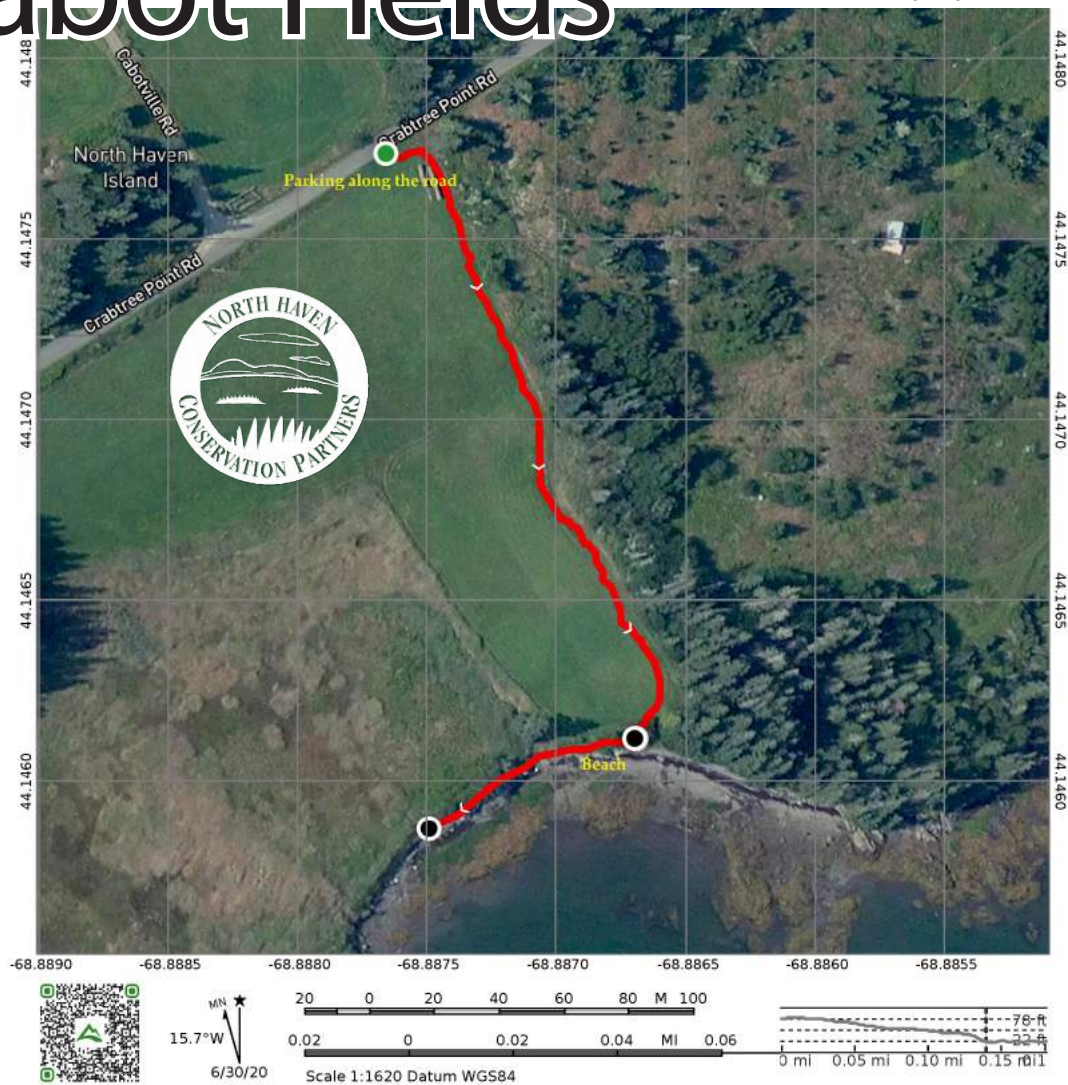
Distance from Downtown

5.7 miles-- 13 min by car, 30 min bike ride

Please be mindful of the Town Ordinance requiring leashes for dogs.

Cabot Fields

Map updated July 2020



The Cabot Fields are a rolling agricultural landscape straddling both sides of Crabtree Point Road, with views over the fields into both Pulpit and Southern Harbors, and shoreline access on the Southern Harbor side. This is an interesting stretch of shore near the head of Southern Harbor that is ideal for beachcombing and exploring the bounty of the intertidal zone. The 26-acre property remains under active agricultural management, primarily providing hay to the island's livestock farmers. The Cabot Fields are protected by a conservation easement given to North Haven Conservation Partners by the Cabot family in 2002.

Features of Note

- Shoreline access
- Beachcombing and picnicking
- Panoramic views and pastoral setting

Please be mindful of the Town Ordinance requiring leashes for dogs.

Access

The path from Crabtree Point Road across the field to the Southern Harbor shoreline runs along the tree line on the eastern edge of the field.

Directions

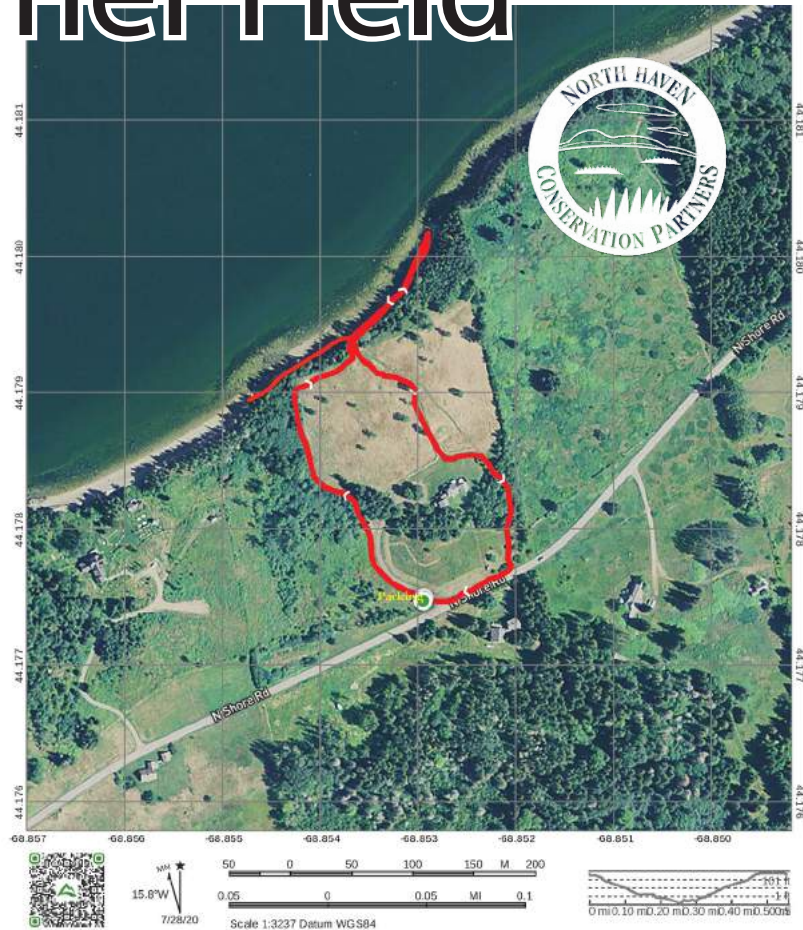
The Cabot Fields are located ½ mile west on Crabtree Point Road from the North Haven Grange.

Distance from Downtown

2.4 miles-- 6 min by car, 13 min bike ride

Miner Field

Map updated July 2020



The Miner field conservation easement is located on the Penobscot Bay side of North Shore Road. Walking trails across the well-managed landscape treat visitors to wild flowers, birdlife, panoramic views of the Bay and surrounding islands and spectacular sunsets over the Camden Hills. Along the path on the property's southwestern line there is comfortable access to the property's 600+ feet of shoreline for picnics, beach combing or launching your kayak for an exploration of the North Shore's interesting coast. Combined with the conservation easement held by Maine Coast Heritage Trust on an abutting property, the Miner Field helps protect almost 15 contiguous acres of habitat that will be permanently managed as open field. Parking is provided in a marked area near the road. The conservation easement on the Miner Field was donated to NHCP by Ranny and Beth Miner in 2007.

Features of Note

- Shoreline access
- Nature and wildlife observation
- Kayaking
- Primitive trail

Please be mindful of the Town Ordinance requiring leashes for dogs.

Access

Trails around the field and to the shoreline are accessed from the trailhead located on the north side of the garage, which itself is located halfway down the driveway.

Directions and Parking

The Miner Field is located on North Shore Road, approximately 1.8 miles from the bridge at the top of Pulpit Harbor. A small parking area is located on the left at the North Shore Road end of the driveway.

Distance from Downtown

4.2 miles-- 9 min by car, 22 min bike ride

North Shore Preserve

Map updated July 2020



Every year the North Shore Preserve is reliably among the most visited of NHCP's properties. The two units of the Preserve, on either side of North Shore Road, offer a wide diversity of landscape – from the coastline, through fields and forests to freshwater wetlands that protect and feed the Charlie Brown's Pond watershed. For the first half of its quarter mile route from the parking area to the shore, the trail on the Bay side of the Preserve runs a well-groomed route through open field, then turns into the woods and through a lovely birch grove down to the shore. The trail provides access to all of the Preserves roughly 600 feet of shoreline. NHCP maintains a picnic table on the bluff above the water. The loop trail on the inland unit of the Preserve runs from the parking area through a healthy forest dominated by spruce, oak, apple and sugar maple. Acquired through multiple gifts from David and Margot Heap beginning in 2007, the North Shore Preserve is the largest component in NHCP's ongoing watershed protection initiative around Charlie Brown's Pond, where we currently own or manage 75% of the acreage.

Features of Note

- Shoreline access
- Nature and wildlife observation
- Forest and invasive species management projects
- Groomed and Primitive trails
- Freshwater resource protection

Access

Trails for both units of the North Shore Preserve start from the small parking area just off of North Shore Road.

Directions and Parking

The North Shore Preserve is located on North Shore Road, approximately 7/10ths of a mile from the bridge at the top of Pulpit Harbor. A small parking area is located just off of the road.

Distance from Downtown

3.2 miles-- 7 min by car, 18 min bike ride

Please be mindful of the Town Ordinance requiring leashes for dogs.

Pulpit Harbor Preserve

Map updated July 2020



The Pulpit Harbor Preserve is located at the head of Pulpit Harbor, on the other side of First Bridge from NHCP's Mill Stream property. The Preserve's 3.5 acres are a gently rolling landscape, dominated by field, with wide-open views of one of the prettiest harbors on the coast of Maine. The trail across the property connects via First Bridge to the Mill Stream trail. This is a wonderful place to picnic, kayak, swim or simply enjoy the spectacular scenery. Kayaks can be launched from the public landing (located on the Preserve) for exploration of the harbor and tidal Mill Stream above the bridge. The public landing dock also has a swimming ladder. NHCP acquired the Pulpit Harbor Preserve through a combination of gift and purchase from Edward and Lansing Lamont in 2003 and Lucia Norton Woodruff in 2019.

Features of Interest

- Shoreline Access
- Picnic tables
- Trail connection to other NHCP protected land
- Swimming
- Kayaking
- Historic cellar hole and well

Access

The Pulpit Harbor Preserve trail starts at First Bridge and ends at the public landing.

Directions and Parking

The Preserve is located at the intersection of North Shore and Pulpit Harbor Roads. Parking is available in the small parking lot at the public landing.

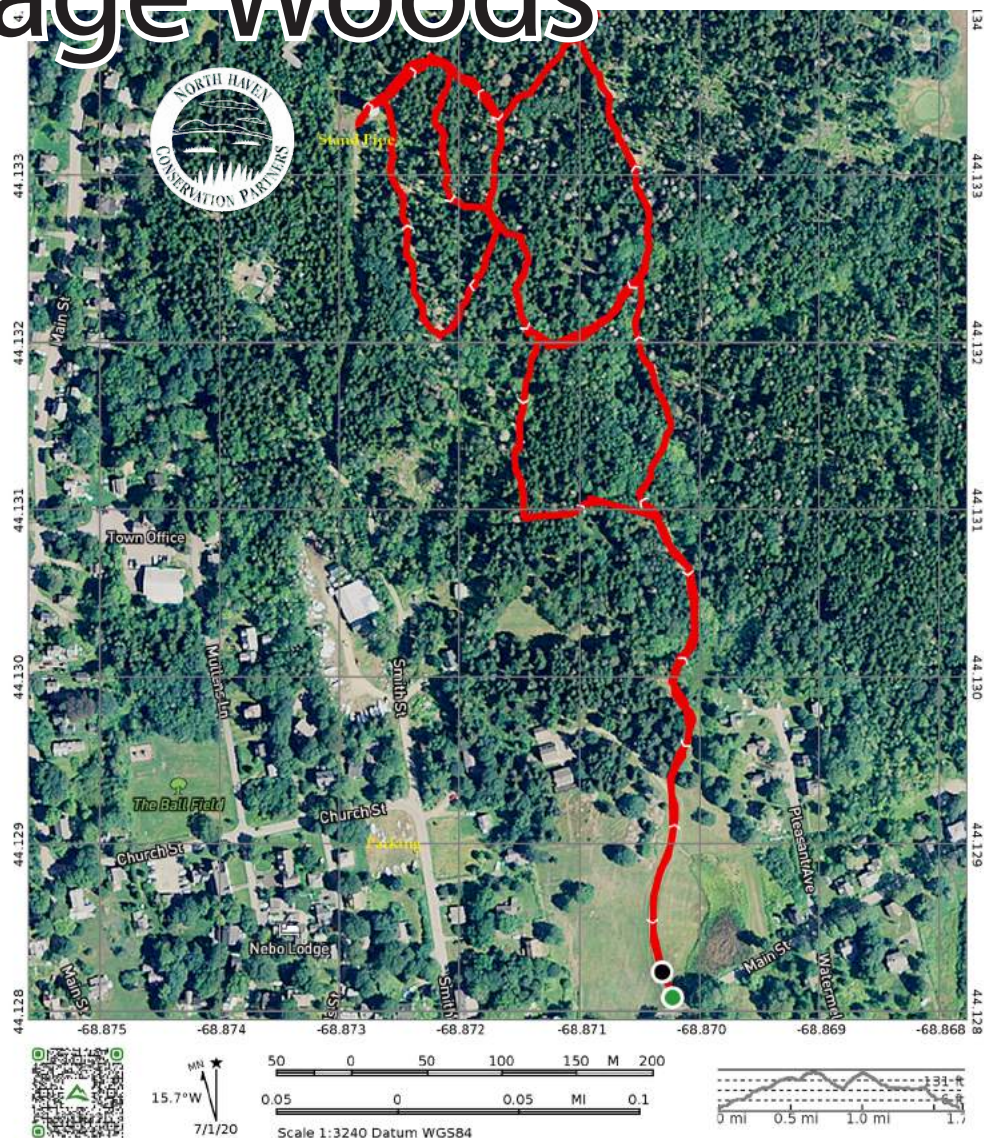
Distance from Downtown

2.5 miles-- 6 min by car, 13 min bike ride

Please be mindful of the Town Ordinance requiring leashes for dogs.

Sage Woods

Map updated July 2020



Sage Woods is another of NHCP's most visited properties, particularly by people living in and around the Village. The property's extensive trail system runs through woods that have been lovingly maintained by the Sages for decades. NHCP frequently uses Sage Woods in its environmental education programming because they demonstrate the benefits of species diversity, wildlife and watershed habitat, soil conservation and overall landscape health that result from best forest management practices. NHCP manages more than 14 acres of Sage Woods under multiple gifts of conservation easement from Hope and Ted Sage, the first of which was in 2017.

Features of Note

- Woodland trails
- Diverse forested habitat
- Easy walk from the Village
- Groomed trails

Please be mindful of the Town Ordinance requiring leashes for dogs.

Access

The trailhead for the Sage Woods trails is at the right hand corner of the field below the Sage's house (when viewed from Iron Point Road).

Directions and Parking

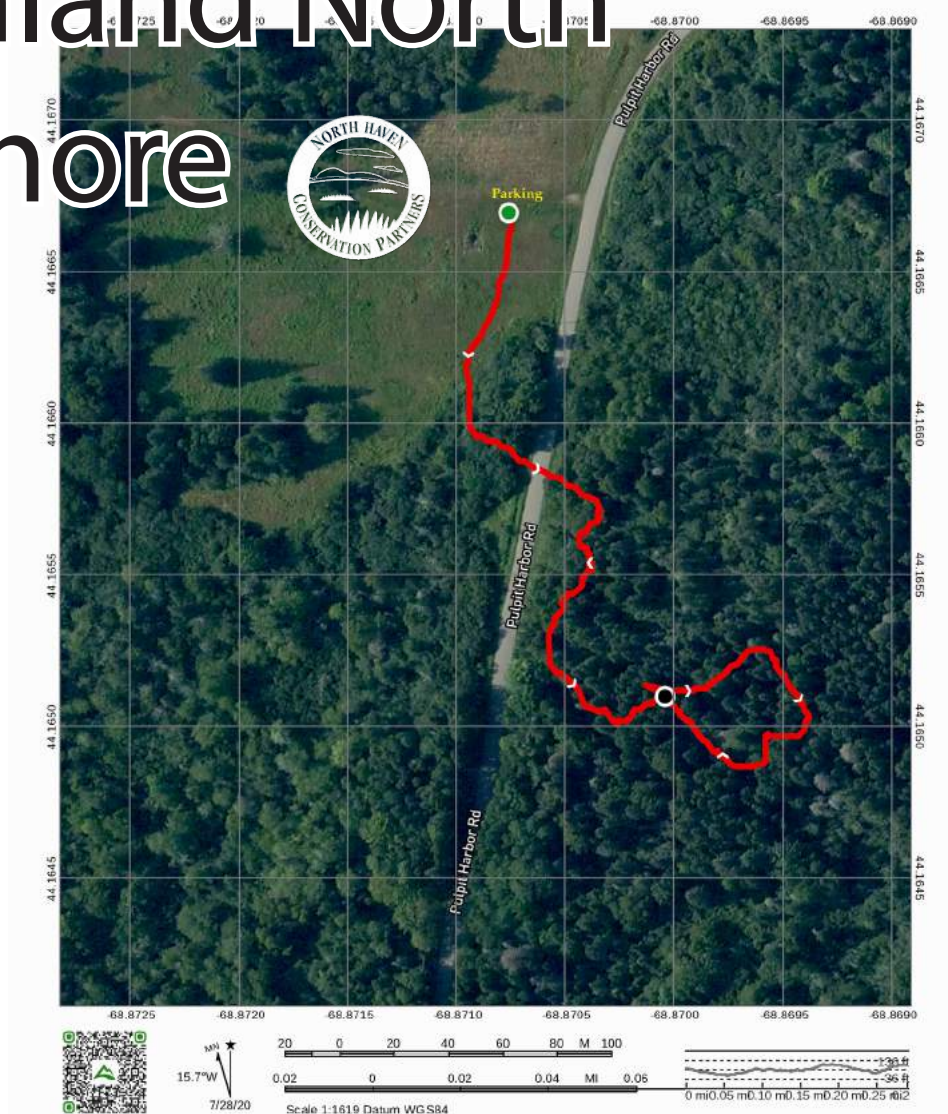
The entrance to Sage Woods is on Iron Point Road, about 250 yards from Waterman's Community Center in the Village. This property is best accessed on foot from the Village.

Distance from Downtown

~250 yards-- 2 minute walk

Inland North Shore

Map updated July 2020



On the inland side of our North Shore property a new trail was cut in July of 2020. The trail starts at the same parking lot as our North Shore trails. From the parking lot the trail crosses through a field and alder wetland before a slight climb to a beech knoll. After crossing the road the trail parallels the road through a buckthorn thicket. The trail then climbs a ledgy knoll dominated by spruce, juniper and more buckthorn. Note the old stone walls and field grown spruce clearly demonstrating this properties agricultural past.

Features of Note

- Old stone walls
- Beach stand

Access

Trails for both units of the North Shore Preserve start from the small parking area just off of North Shore Road.

Directions and Parking

The North Shore Preserve is located on North Shore Road, approximately 7/10ths of a mile from the bridge at the top of Pulpit Harbor. A small parking area is located just off of the road.

Distance from Downtown

3.2 miles-- 7 min by car, 18 min bike ride

Please be mindful of the Town Ordinance requiring leashes for dogs.

Peleg Thomas Trail

Map updated July 2020



Peleg Thomas Farm is an 8.6-acre property given by Mary White to NHCP and North Haven Sustainable Housing in 2015. In conjunction with Southern Harbor Elder Services, Sustainable Housing developed Southern Harbor House, North Haven's eldercare facility, on three acres. NHCP owns and manages the fields and shoreline that comprise the 5.6-acre balance of the property. The property is situated at the head of Southern Harbor. A loop trail runs from the parking lot to the point jutting out into the harbor, and back along the shoreline. Enjoy a picnic with a spectacular view from the point. This is also an easy place to launch your kayak to explore Southern Harbors interesting shoreline as well as the Dumplings – the small islands that separate the harbor from the Fox Islands Thoroughfare.

Features of Note

- Shoreline access
- Kayak launch area
- Picnic table
- Groomed trails

Access

The path to the point starts at the Southern Harbor House parking area.

Directions and Parking

Peleg Thomas Farm is located at the intersection of Main Street and Pulpit Harbor Road, approximately 1.4 miles from the Village. Parking for both NHCP's land and Southern Harbor House is on the right going up the driveway from Pulpit Harbor Road.

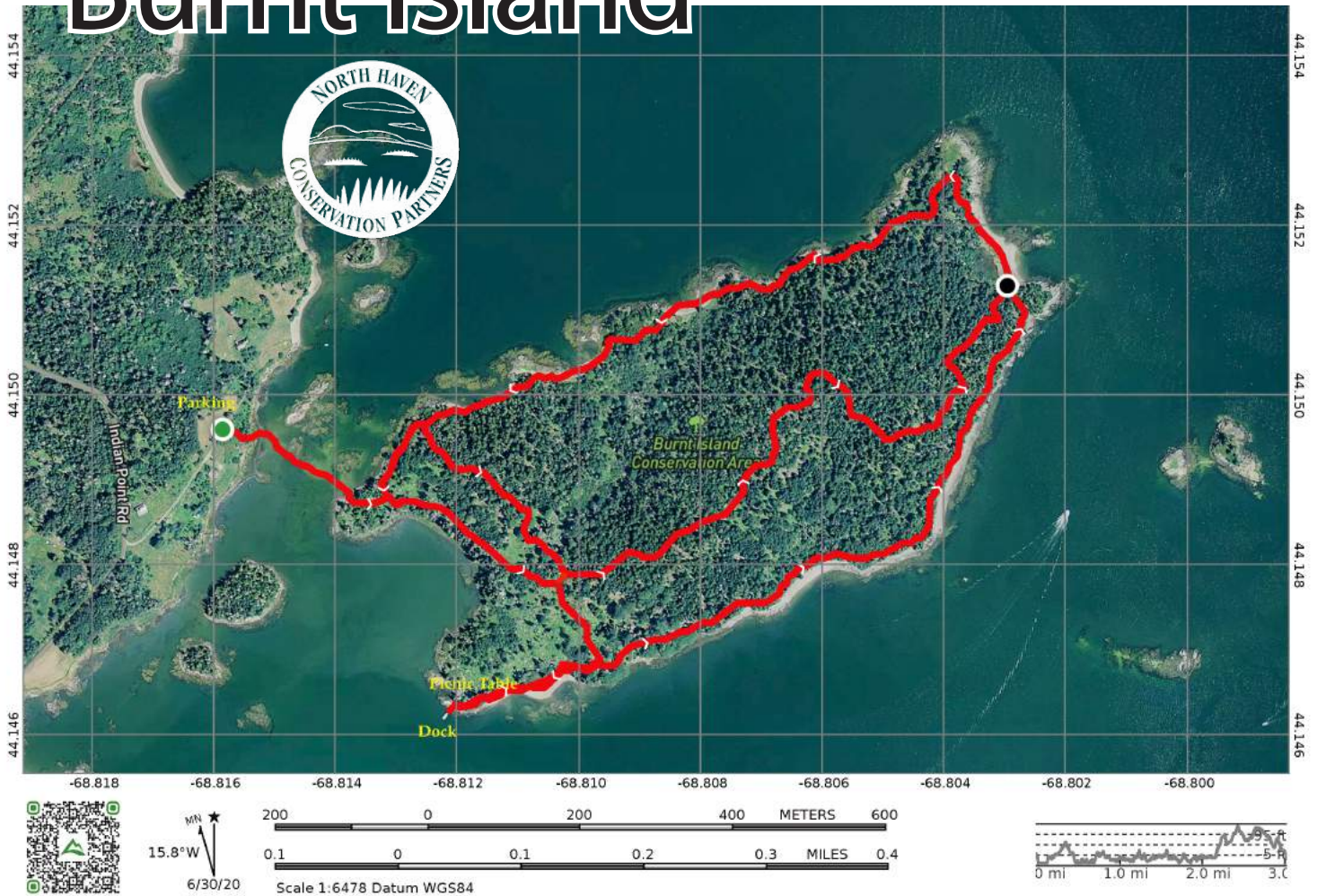
Distance from Downtown

1.4 miles-- 3 min by car, 7 min bike ride

Please be mindful of the Town Ordinance requiring leashes for dogs.

Burnt Island

Map updated July 2020



This beautiful 74-acre island on the Little Thoroughfare is accessible by foot for three hours either side of low tide, or by boat at any tide via the seasonal deep-water dock at the western end of the island. There are multiple picnic beaches on the south shore and east end with views to neighboring islands and across East Penobscot Bay. The island's trail system includes a perimeter shoreline trail, connected by an inland cross-island trail. The remnants of a historic homestead and farm are also located on the south shore. In its uninhabited isolation, the island is an excellent place for bird watching, particularly migratory birds. North Haven Conservation Partners holds a conservation easement on Burnt Island, granted to the organization by the residents of North Haven after the Minot family donated the island to the Town in 2000.

Features of Note

- Shoreline access
- 2+ miles of hiking trails
- Multiple beaches
- Remnants of historic farm and homestead
- Bird watching

Access

Foot passage to or from Burnt Island is not possible at high water. Check the tides and plan your visit accordingly. By foot, the island is accessible for three hours either side of low tide across a well-traveled causeway from the North Haven side. The path down to the causeway from Cooper's Lane is marked. The island is also accessible by boat, landing either directly on the beach or at the seasonal dock at the western end of the island.

Directions and Parking

South Shore Road to Indian Point Road to Cooper's Lane (unpaved, on the left). There is a small, marked parking area on the left about 250 yards in from the paved road. Use of the parking area is made possible through the generosity of the family of Jack and Anne Cobb. Please do not park in the small parking area (also in the left) just before Cooper's Lane ends.

Distance from Downtown

4.5 miles-- 9 min by car, 25 min bike ride

Please be mindful of the Town Ordinance requiring leashes for dogs.