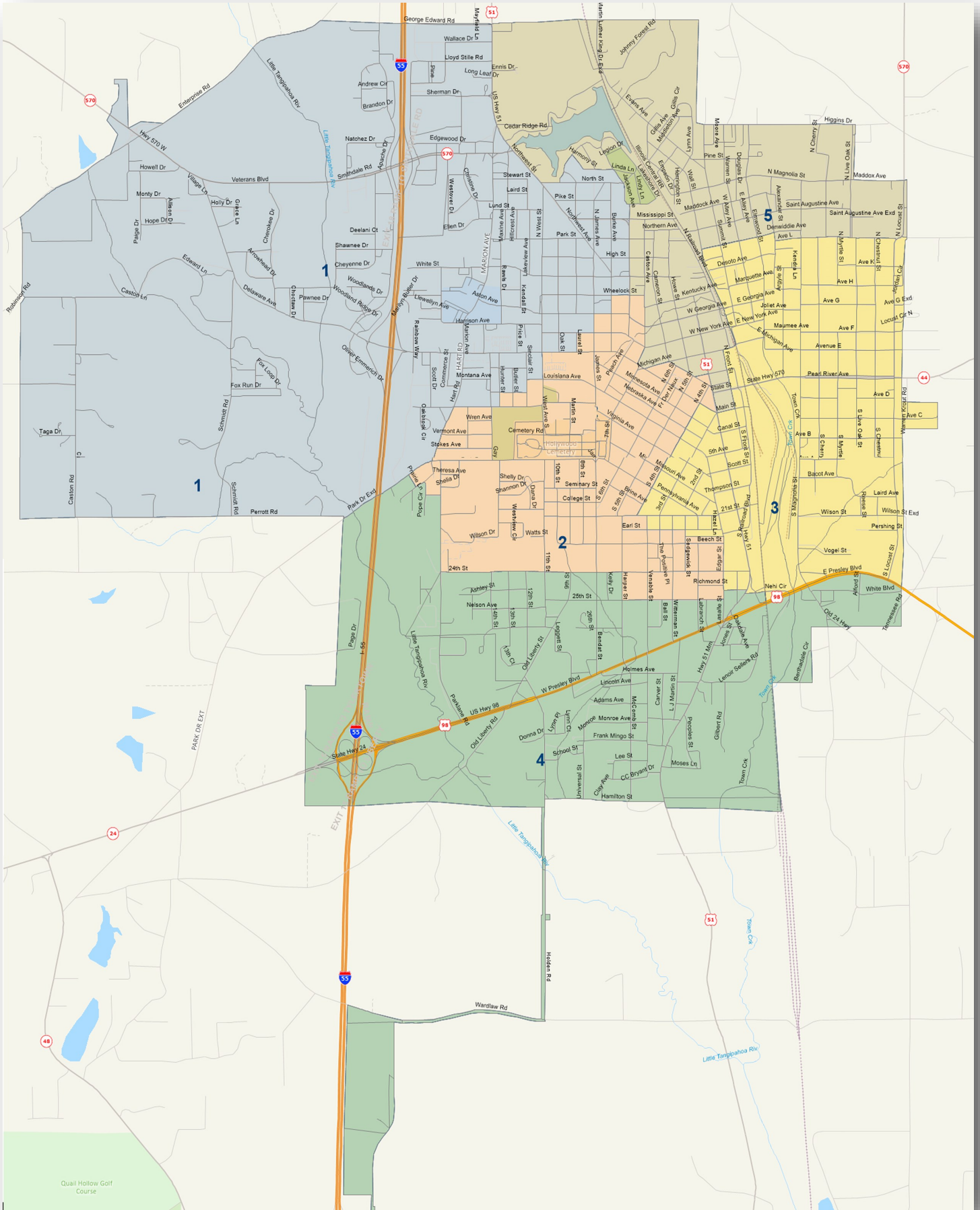


CITY OF MCCOMB WARD MAP



Population Summary

District	Population	Deviation	% Devn.	White	[% White]	Black	[% Black]	[18+_Pop]	[18+_Wht]
1	2,447	-36	-1.45%	1,368	55.91%	885	36.17%	2,012	1,206
2	2,550	67	2.70%	652	25.57%	1,750	68.63%	1,830	567
3	2,498	15	0.60%	295	11.81%	2,072	82.95%	1,857	273
4	2,474	-9	-0.36%	399	16.13%	1,968	79.55%	1,852	352
5	2,444	-39	-1.57%	217	8.88%	2,122	86.82%	1,677	190

Total Population: 12,413
 Ideal District Population: 2,483

Summary Statistics:

Population Range: 2,444 to 2,550
 Ratio Range: 0.04
 Absolute Range: -39 to 67
 Absolute Overall Range: 106
 Relative Range: -1.00% to 2.70%
 Relative Overall Range: 4.27%
 Absolute Mean Deviation: 33.20
 Relative Mean Deviation: 1.34%
 Standard Deviation: 39.02