

**Town of Kersey**  
**Winter Information**  
**Snow Plan and Policy**  
**2023-2024**

**Snow Plowing Operations, Parking, and Town Ordinances**



## **TABLE OF CONTENTS**

<b>Goals of the Town's Snow Control Operations</b>	<b>3</b>
<b>Plan of Operations</b>	<b>3</b>
<b>Winter Parking Prohibition</b>	<b>4</b>
<b>Snow Plowing and Piling Map</b>	<b>4</b>
<b>Sidewalk Clearing</b>	<b>6</b>
<b>Fire Hydrants</b>	<b>7</b>
<b>Catch Basins and Storm Inlets</b>	<b>7</b>
<b>Driveway Clearing Tips</b>	<b>7</b>
<b>Winter Driving Checklist and Tips</b>	<b>8</b>
<b>Potholes</b>	<b>8</b>
<b>Portable Basketball Hoops</b>	<b>9</b>
<b>Do's and Don'ts</b>	<b>9</b>
<b>FAQ's (Frequently Asked Questions)</b>	<b>10</b>
<b>Contact Information Regarding Snow Questions</b>	<b>11</b>

## **The Goals of the Kersey Public Works Department (KPWD) Snow Control Operations**

- To provide cost effective clearing and removal of snow from Town streets.
- Minimize the hazards of slippery road conditions encountered by motorists.
- Reduce economic losses caused by workers unable to get to their job.
- To restore traveling conditions throughout the Town as soon as possible after each storm event.

This informational brochure provides a general overview of our snow program, frequently asked questions, winter tips, and seeks your support in providing safe streets and sidewalks during snow emergencies.

The Kersey Public Works Department (KPWD) maintains roughly fifteen miles of roadway in the winter season and road operations. The KPWD plows roughly six miles of sidewalk to ensure safe passage for pedestrians.

The KPWD has equipment available utilized to de-ice the roadways. When conditions warrant the plowing of roadways the KPWD uses municipal vehicles and equipment in order to make our streets safe.

Many factors can determine the KPWD's response to a snow event, some of which may include:

- The temperature before, during, and after the storm.
- The amount of accumulated snow.
- The duration of the storm.
- The road surface temperature.
- The weather forecast for the following day(s).
- Resource/Staff Availability.

### **New for 2021-2022:**

- 1) The annexation of the Zehnder Property and CR 53 North of Hwy 34, adds five additional miles to our plan, and adds to the Priority Route. (See priority route maps)

### **Plan of Operations:**

- 1) When the snow starts falling road de-icing equipment are dispatched to apply materials to keep the road safe. The materials may include ice slicer (road salts), sand, and magnesium chloride.
- 2) When two inches of snow has accumulated on the streets, a snow plowing operations typically begin.
- 3) Once the snow stops falling and the roads have been plowed the streets may again be treated with de-icing materials to prevent a "freeze-up" of the road surface.

- 4) KPWD personnel will then perform a clean-up effort of clearing intersections, plowing sidewalks, and parking lots.

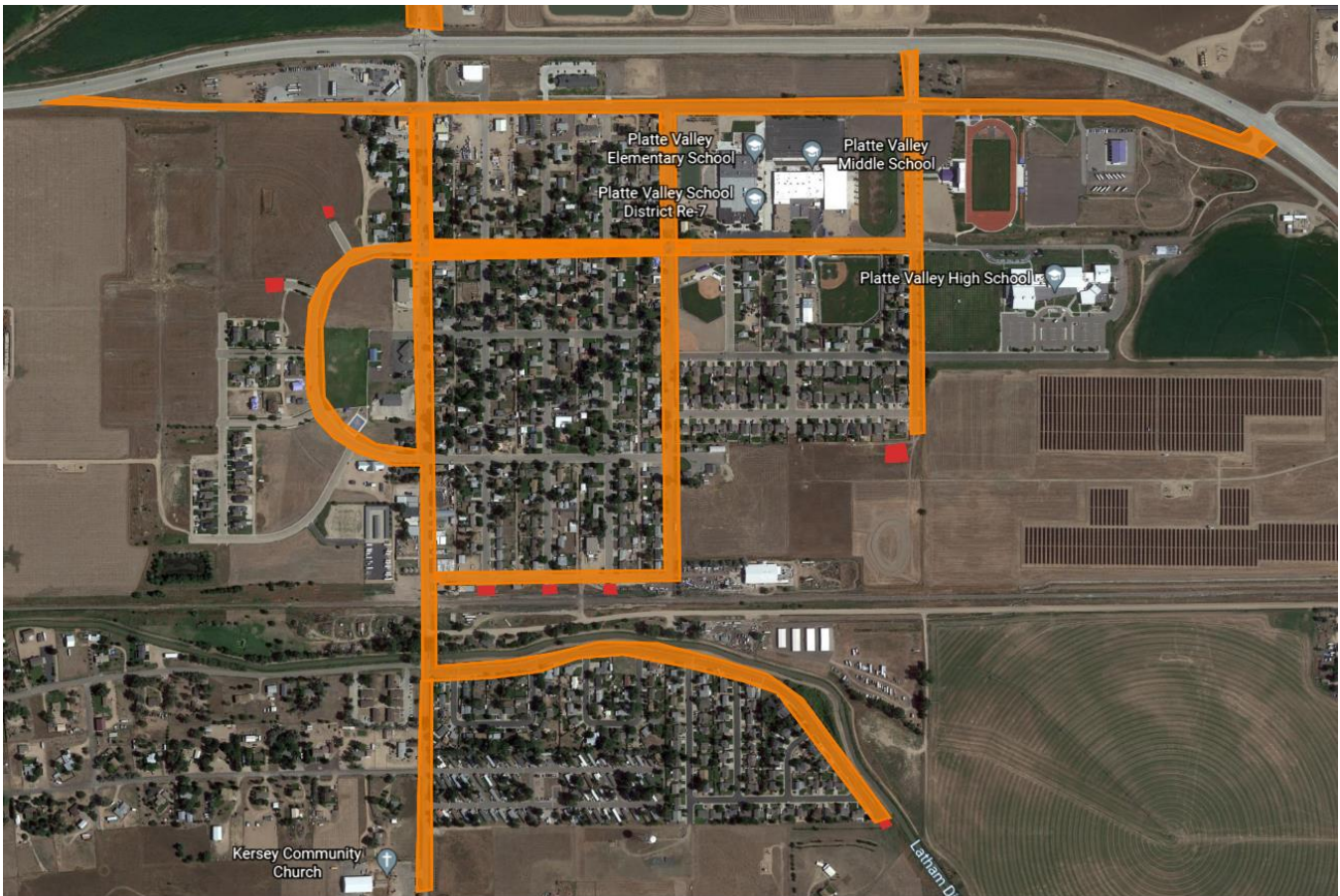
**Winter Parking Ordinance**

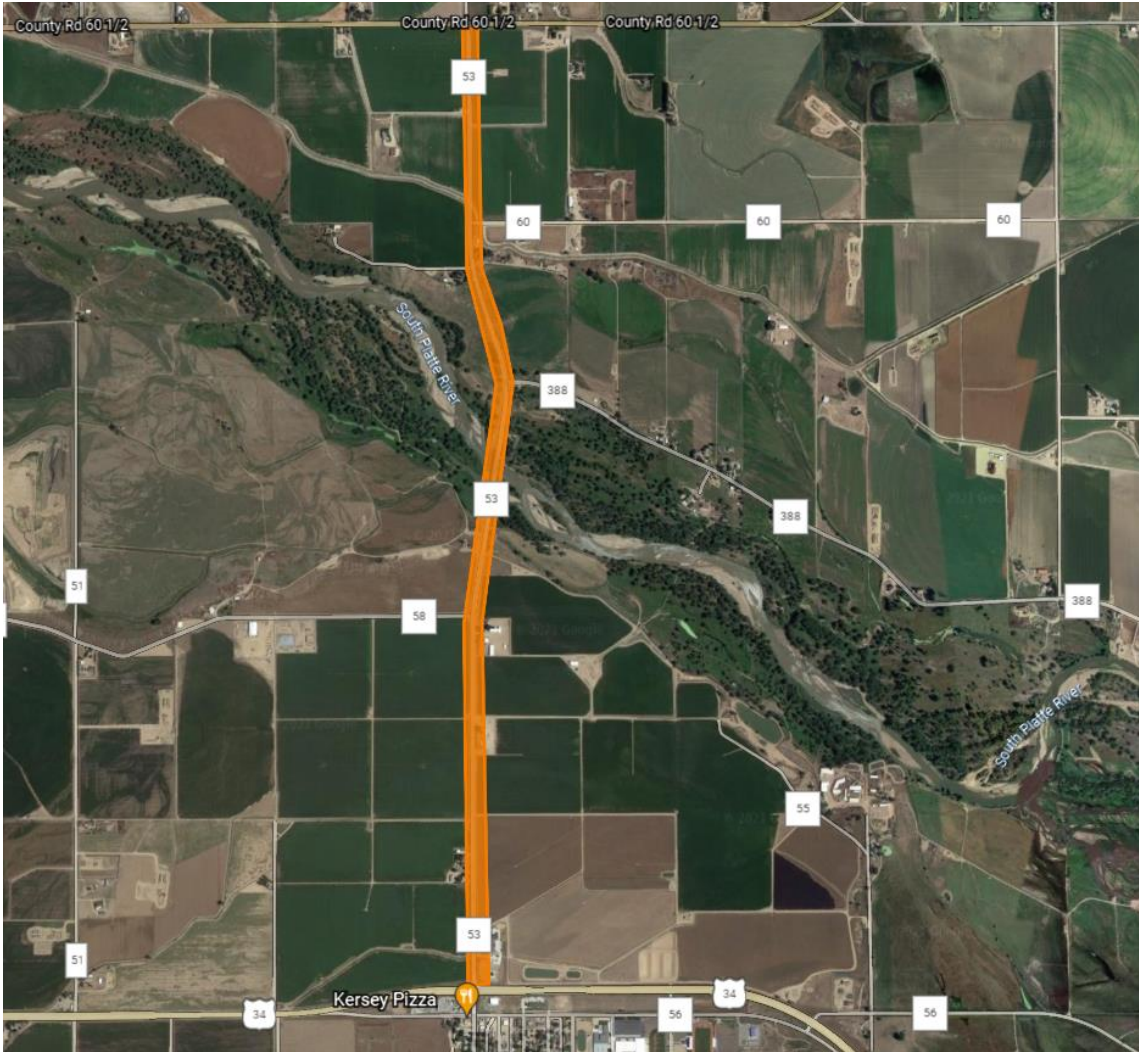
Parked vehicles are our biggest obstacles to effective snow removal. Please support our efforts by parking your vehicle in conformance with the winter parking ordinances. All of the Town’s ordinances are available on the Town’s website, [www.kerseygov.com](http://www.kerseygov.com). A link to the Town’s municipal code can be found on the homepage. Specific ordinances which apply to snow operations include but are not limited to:

- KMC 8-49 Parking prohibited after snowfall accumulation
- KMC 11-13 Obstructing sidewalks; snow removal; required within certain time
- KMC 11-14 Persons responsible for snow removal in multiple occupancy buildings.

**Snow Plowing Priority and Piling Map**

Priority streets shown in Orange. Snow Piling locations in Red.





Most **Priority** streets (orange) shall be plowed **to the sides** of the roadway. Some streets will be required to be plowed to center based off snowfall amounts and availability for snow to be hauled away to help with snow melt drainage. (As determined by Operations Managers/Town Manager).

In all cases, the Public Works Operations Managers are in charge of the actual plowing operations. They shall have the discretion to make changes to the plowing plan based on safety or extraordinary circumstances.

In the event useful community service is assigned by the Municipal Judge, this service shall be completed in the winter months assisting with snow removal. These assignments shall be at the discretion of the Public Works Managers in charge of plowing operations.

## **Sidewalk Clearing**

Residents are reminded the Town Ordinance states it is the responsibility of the owners and occupants of buildings and vacant lots to remove your snow, sleet, and ice from public sidewalks abutting to their property **within 24 hours** after the storm has concluded. This includes clearing areas for access to school bus stops and clearing paths at corners to access the roads. Failure to comply with this ordinance may result in a fine. If you have difficulty with properties that have unshoveled sidewalks, you can report these to the Kersey Police Department code enforcement at (970) 353-1681.

**Please remember the final snow plow pass is not made until after the storm has concluded.** Your cooperation in clearing the sidewalks is an essential safety measure for school children, the elderly, and other pedestrians using the sidewalks.

## **Town Ordinances**

### **Section 8-49 Parking Prohibited After Snowfall Accumulation**

- (a) Upon the occurrence of a snowfall resulting in accumulation of two inches or more, parking shall be prohibited on the following public roadways within the town, each of which is hereby designated a snow route:
- (1) First Street (aka Main Street or CR 53) between Highway 34 and CR 54.
  - (2) Fifth Street between Hill Street and Trumbull Street.
  - (3) Ninth Street between Hill Street and Kohler Farms Road.
  - (4) Clark Street between First Street and Ninth Street.
  - (5) Centennial Drive between First Street and Elder Street.
  - (6) Civic Circle between Clark Street and McIntyre Street.

During such snow accumulation conditions, the Kersey Police Department is authorized to remove or have removed or towed any vehicle (including, without limitation, any motor vehicle, motorized equipment, snowmobile, motorcycle or bicycle), except an emergency vehicle, found parked, abandoned, standing or stopped in or along a snow route, and if appropriate to cause such vehicle to be impounded at an impound lot, without delay and all at the owner's expense.

- (b) Public entities identified as those entities which assess an annual mill levy shall pay a fee as set forth in the town's adopted fee schedule. Off-highway vehicles owned and operated by the town shall be registered but exempt from any such fee.
- (c) Except as shall constitute an exception under the Colorado Governmental Immunity Act, neither the town nor any of its trustees, officers, employees or agents shall be liable for any direct, indirect, incidental or consequential damages resulting in any way from the removal, towing or impoundment of a vehicle pursuant to this section.
- (d) The Town Manager is hereby authorized to oversee the development and placement of appropriate street signs to inform the public of the restrictions this section authorizes. The lack of visibility of any such sign when parking restrictions are in effect shall not excuse the owner or operator of a vehicle from complying with the provisions of this section. The Town Manager is

further authorized to oversee the development and adoption of such rules and regulations as the town manager deems reasonably necessary to effectuate and carry out the intent of this section.

### **Section Sec. 11-13 Obstructing sidewalks; snow removal; required within certain time**

It shall be the duty of all persons, whether owners or not, within the corporate limits of the Town to keep the sidewalks in front of and adjacent to the tenements and grounds occupied by them clear of snow and ice; and after fall of such snow, such persons shall remove the same from such sidewalks within twenty-four (24) hours after the termination of each such snowfall. It shall be unlawful for any person to drag, shovel or deposit any snow that has been removed from private property upon any street, gutter or sidewalk or upon any other public ground or place in the Town except in an area which has been designated for such a deposit of snow. Said designation shall occur by Board of Trustee resolution which shall be published once in a newspaper of general circulation subsequent to its passage. (Ord. 120 §1, 1976)

### **Section 11-14 Persons responsible for snow removal in multiple occupancy buildings**

Wherever houses or other buildings shall be occupied by several tenants, it shall be the duty of the persons occupying the story or stories nearest such sidewalks to clean snow and ice from the same. Where the basement of any building shall reach below the level of the ground, the second story shall be deemed nearest the sidewalk and such basement or first story shall be responsible if there are no tenants in the second story; provided that no occupant shall be required to keep clear any such sidewalk for a greater number of feet than may be contiguous or opposite to any premises or part of premises actually occupied by that tenant. (Ord. 120 §2, 1976)

### **Fire Hydrants**

Owners of property and occupants of buildings that have a fire hydrant are requested to clear snow from a four-foot area in all directions around the hydrant and a three-foot wide path from the street to the fire hydrant. The Fire Protection District counts on hydrants being cleared of snow to help protect your safety.

### **Catch Basins and Storm Inlets**

Help KPWD and yourselves minimize street flooding by shoveling snow and ice from in front of the storm inlet nearest your house. This includes keeping catch basin grates free of leaves and other debris all year long!

### **Driveway Clearing Tips**

The following suggestions are intended to make your driveway snow removal easier and safer:

- **Do NOT shovel, blow, or plow snow from your driveway into or across the road.** It is a violation of Town Ordinances to push snow into the street, and you may be held liable if this snow causes an accident. **Remember, you are also responsible for the actions of your contractor!**

- If possible, wait until the road has been completely plowed to the curb before shoveling the last 5-10 feet of your driveway. This way less snow from the road will end up in your driveway.
- It is best to place snow on your own grass or landscaping. This area naturally allows water to permeate and provides added moisture content for your landscaping.
- Do NOT allow children to play on snow along the side of the road. The Town may need to push back snow several days after a storm to create room for the next snow event.

### **Winter Driving Checklist and Tips**

- Keep good, all-season tires on your car.
- Keep a shovel and some sand in your trunk.
- Clean your vehicle of all snow and ice, including the roof.
- Allow extra time to reach your destination. During storms, travel only when absolutely necessary.
- Keep a safe distance from plow trucks and other vehicles.

### **Potholes**

Potholes are formed when water seeps into cracks in the pavement surface and the continual freeze-thaw cycle in the early spring moves the surface of the pavement. This movement weakens the pavement. Traffic loosens the pavement even more, and it eventually crumbles and pops out. The pounding of tires wears a hole in the underlying gravel, and a pothole is formed.

During the weeks leading up to the winter season, Town crews make pavement repairs to help minimize the formation of potholes during the winter. The patching of potholes continues throughout the winter. During cold weather, temporary repairs are made with cold patch asphalt because the weather is too cold to use hot asphalt. During warmer temperatures, hot asphalt is used for more permanent repairs.

Unfortunately, during periods where the weather fluctuates from freezing to warm temperatures, the formation of potholes is unavoidable. Spring temperatures warm the cold pavement, melting and evaporating any frozen water. This creates air pockets that can eventually cause the pavement to break up. A winter of heavy snow or rain and several freeze-thaw cycles can mean a big pothole season ahead.

**If you see a pothole in need of repair, please call the Town's Public Works Department at (970) 353-1681 or email the Public Works Director at [ksmith@kerseygov.com](mailto:ksmith@kerseygov.com)**

**\*DO NOT MARK POTHoles IN ROADWAY WITH PAINT\***

**Paint and paint colors are reserved for Excavation Locating purposes and can be confusing when markings appear in certain colors to the contractors on the roadways, call in the pothole complaint**



To help expedite our response, please provide us with some specific information:

- The exact location
- Size (approximate length/width/depth)
- Is the hole on the sidewalk or roadway (driving lane or parking lane)?
- Is there a barricade or orange cone over this hole?

***The more information we have, the better we can serve you.***

Potholes on most heavily traveled roads are usually repaired within 48 to 72 hours of notification. Maintenance crews are constantly on the lookout for potholes but, we welcome citizen calls about potholes as well. The sooner the pothole is reported, the quicker the Public Works Department can remove that road hazard.

### **Portable Basketball Hoops**

Residents are reminded that portable basketball hoops should NOT be in the Town Right-of-Way. The Town is not responsible for damage done by plows to basketball hoops left in the Town Right-of-Way. You could be fined and may also be liable for damage done to vehicles and/or personal injury claims from placement of hoops on Town property.

### **Do's and Don'ts:**

Please Do Not:

- Please **do not** plow/blow snow from your property into the street. This not only increases the Town's cost for snow plowing but, increases your liability if an accident occurs.
- Please **do not** throw snow from your driveway or sidewalk into the street.
- Please **do not** place rocks or large objects on the road edge. This may cause plow damage, vehicle damage, or operator injury.

Please Do:

- In the interest of your neighbor's and your own personal safety, please shovel out nearby hydrants.
- Please keep nearby catch basins clear of snow or ice to prevent street flooding during heavy rains or snow melting periods.
- Please keep snow from your sidewalks and driveways in your grass or landscaped areas (free water)

## **FAQ's (Frequently Asked Questions)**

*Question: Why do you wait to plow the snow off the streets?*

Answer: After applying road de-icing materials, the PWD waits for the salt to react with the snow to create a "brine" solution. This reaction time depends on a number of variables (i.e. traffic flow, temperature, etc.). The "brine" solution keeps the snow from adhering to the street and helps the snow plowing effort.

*Question: Do some streets receive priority during the snow storm?*

Answer: Yes. Major (arterial) roads and hills are a top priority, followed by service to the arterial collector roads. Please refer to page four for the Snow Plowing Map; all of the streets in **orange** on the priority maps are the first priority. All other streets will be assessed to be plowed or not in each storm event by the Operation Managers.

*Question: Do the sidewalks receive the same priority as the streets?*

Answer: **No**. The roads are a priority for public safety reasons. Only highly traveled and school related sidewalks are plowed when the storm has ended. Then all other sidewalks will be plowed after the storm event and as resources allow.

*Question: Why is snow pushed into my driveway?*

Answer: **This situation is unavoidable**. The plows remove as much snow as possible to allow for maximum clearance of the roadway and to allow for mail delivery.

*Question: Why does my street always seem like it's the last one plowed?*

Answer: Traffic volume is the determining factor for order in snow removal operations. You may feel like your street is the last to be plowed or not at all. However, our main objective is to make the priority roads are safe for all drivers during snowstorms. Please be patient.

*Question: Who determines the opening, closing, or delayed opening of schools during a snow storm?*

Answer: The School District.

### **Contact Information Regarding Snow Questions**

- For further information or suggestions on the Snow Operations Policy for the Town please call or email Kurt Smith, Public Works Operations Manager at: (970) 353-1681 or email him at: [ksmith@kerseygov.com](mailto:ksmith@kerseygov.com)
- For snow deposits onto the streets by residents not following ordinance and causing a hazard: Please Call the Kersey Police Department at (970) 353-1681

The Kersey Public Works Department would like to wish you a safe and enjoyable winter season  
Thank you