

American Maglev Technology, Inc.

**Presentation to
Gateway Cities Council of Governments
December 5, 2007**





An Integrated System

- Our focus has been on passenger service.
- The freight container logistics opportunity is a significant source of revenue to support next generation transportation.
- This next generation system will carry **both passengers and freight.**







WRH 2007



AMT 
Mass Transit for the Future

Operating Costs

- Half power, half people
- Cruise for 80KW (\$9 / hour)
- Zero to 60MPH for a quarter net.
- Energy cost per month is \$9000 per car based on 10 minute headways and 20 hour days.

Operating cost can be covered by the freight charges, which is unique!

Safety Standards

- **Safety Certification**

- US Department of Transportation/Federal Transit Administration (USDOT/FTA) Standards

- **Standards**

- American Society of Civil Engineers/Automated People Mover Standards (ASCE/APMS)
 - American Association of State Highway and Transportation Officials (AASHTO)
 - American National Standards Institute (ANSI)
 - Institute of Electrical (IEEE)
 - National Fire Protection Association (NFPA)
 - Americans with Disabilities Act (ADA)

Environmental Mitigation and Mobility Initiative (EMMI)

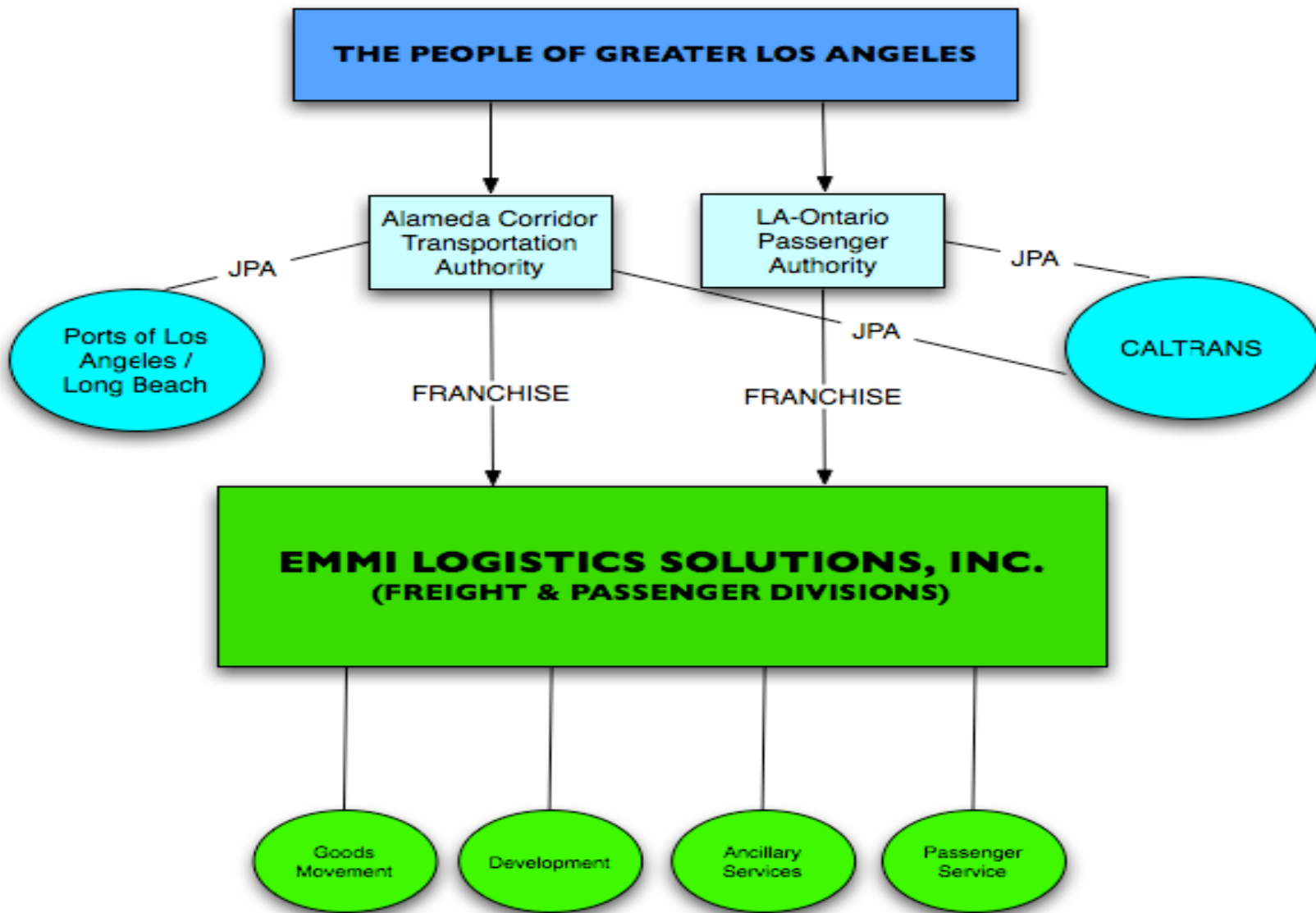


Goods Movement



Passenger Transportation





The EMMI Vision

EMMI will be the leading provider in the movement of goods and passenger transportation services in the region.

EMMI will be a new California based company that will play an important role in promoting sustainable growth in the movement of goods and passengers throughout the region with environmental through the implementation of novel electric transportation technology.

EMMI will cater to the immediate and long-term mobility and logistics needs of the region.

Los Angeles EMMI Project

- Huge growth in containers at SPB Ports.
- 17M to 44M by 2030.
- Environmental Alarm has been sounded.
- Population growth of 6M during this time.

Sustainability is a HUGE challenge.

Sustainability is the Challenge

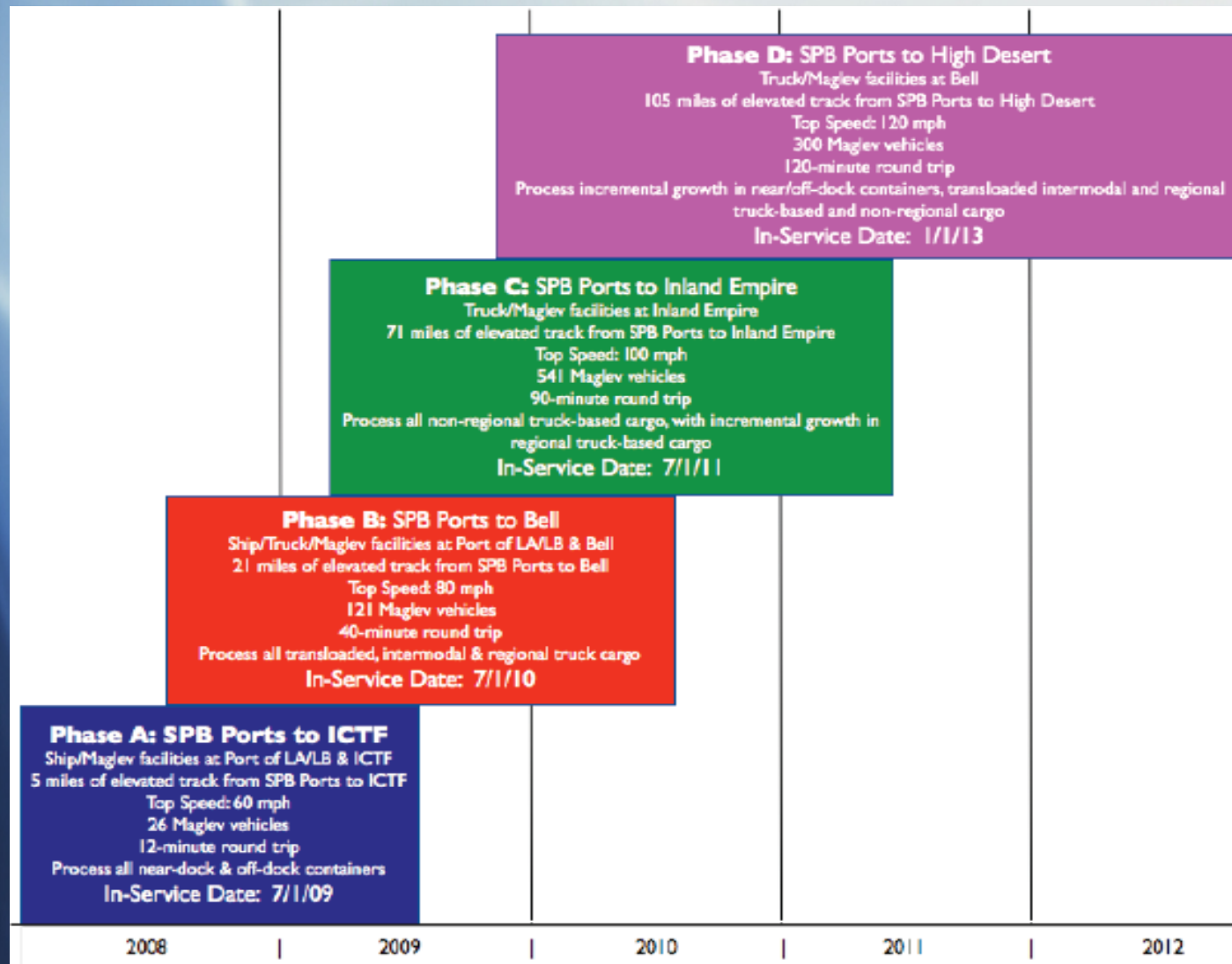
- Growth Sustainability.
- Health Sustainability.
- Economic Sustainability.



EMMI Cargo Routes



An Aggressive Development Plan



EMMI - Cargo System

PROJECT PHASE	CAPITAL COST
Phase A – SPB to ICTF	\$ 161,207,610
Phase B – SPB to Bell	700,700,204
Phase C – SPB to Inland Empire	2,742,873,308
Phase D – SPB to High Desert	834,853,294
TOTAL	\$ 4,439,634,415

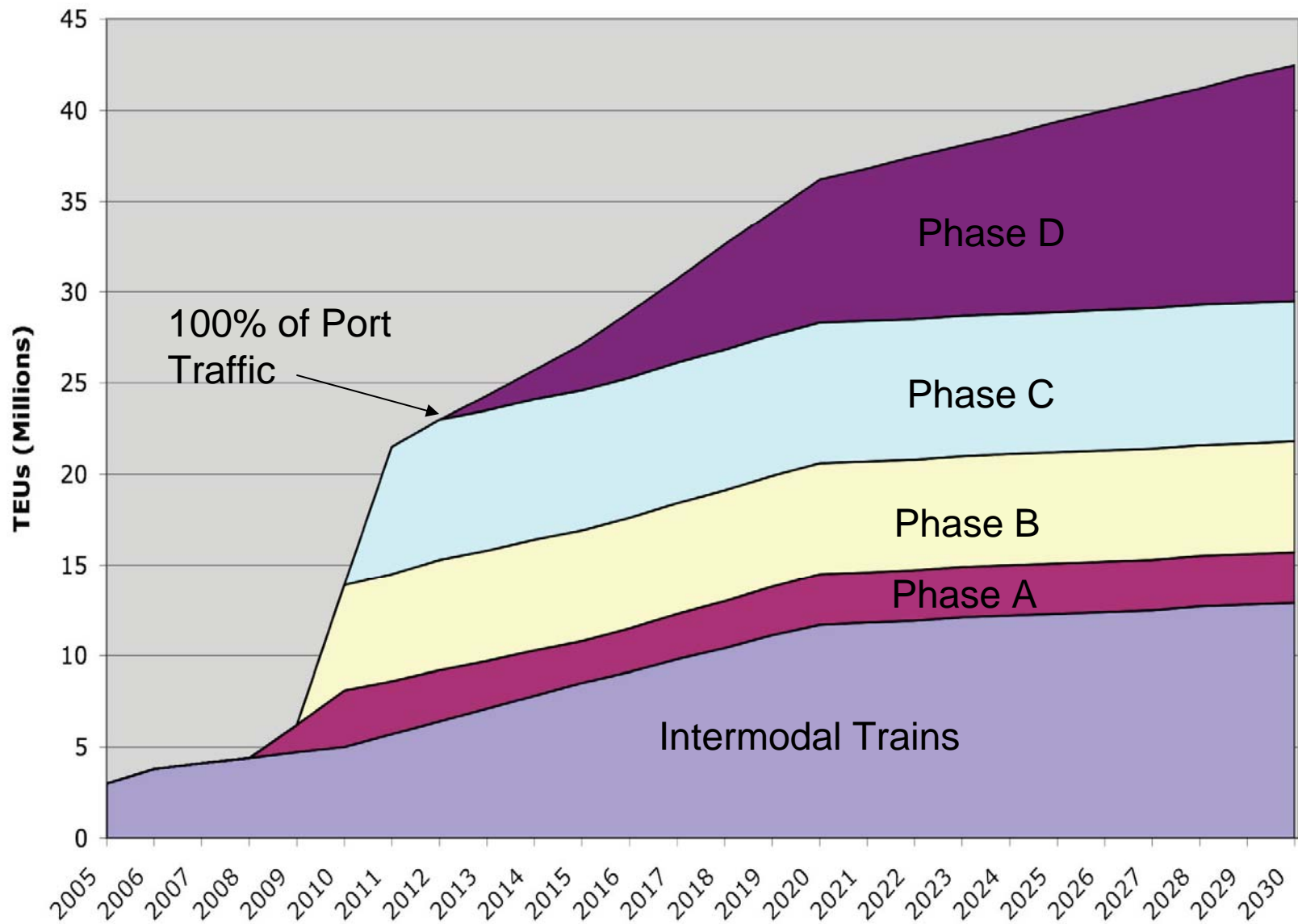
Total Cost - \$ 4.4 Billion

EMMI Initial Costs

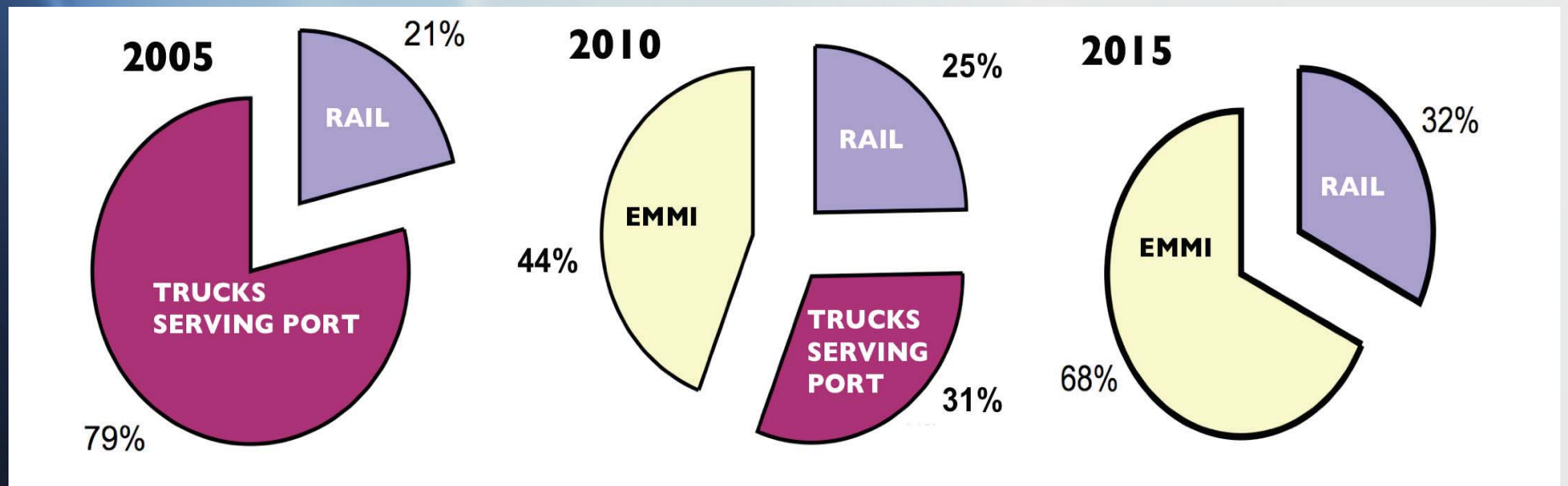
Capital Cost	Phase A	Phase B	Phase C	Phase D
Guideway	\$ 31,639,537	\$ 138,932,989	\$ 469,725,819	\$ 297,713,547
G,S, & C*	19,400,640	65,875,200	\$ 208,435,200	\$ 134,304,000
Facilities	20,000,000	84,000,000	\$ 284,000,000	\$ 180,000,000
Vehicles	65,000,000	302,500,000	\$ 1,352,500,000	\$ 92,500,000
Fees	25,167,433	109,392,015	\$ 428,212,289	\$ 130,335,746
Total	\$ 161,207,610	\$ 700,700,204	\$ 2,742,873,308	\$ 834,853,294

**Project CAPEX - \$ 4.4
Billion**

TEUs by EMMI Phase



EMMI Decongests the Ports



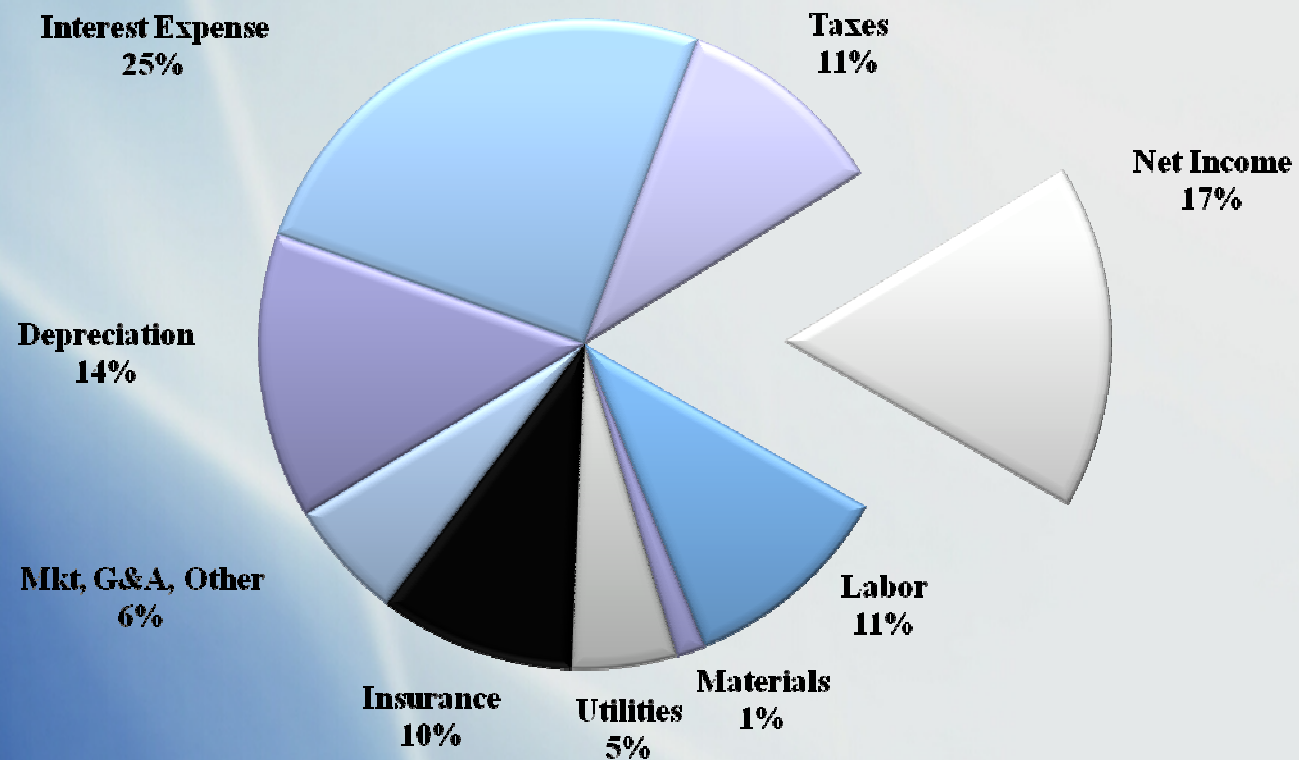
Truck trip efficiencies are enhanced.

Pricing is Competitive

<u>Phase: Destination</u>	<u>2007 RT Price</u>	<u>2011 RT Price</u>
A: ICTF	\$150	\$122
B: Bell	\$225	\$133
C: Inland Empire	\$275	\$197
D: High Desert	\$300	\$233

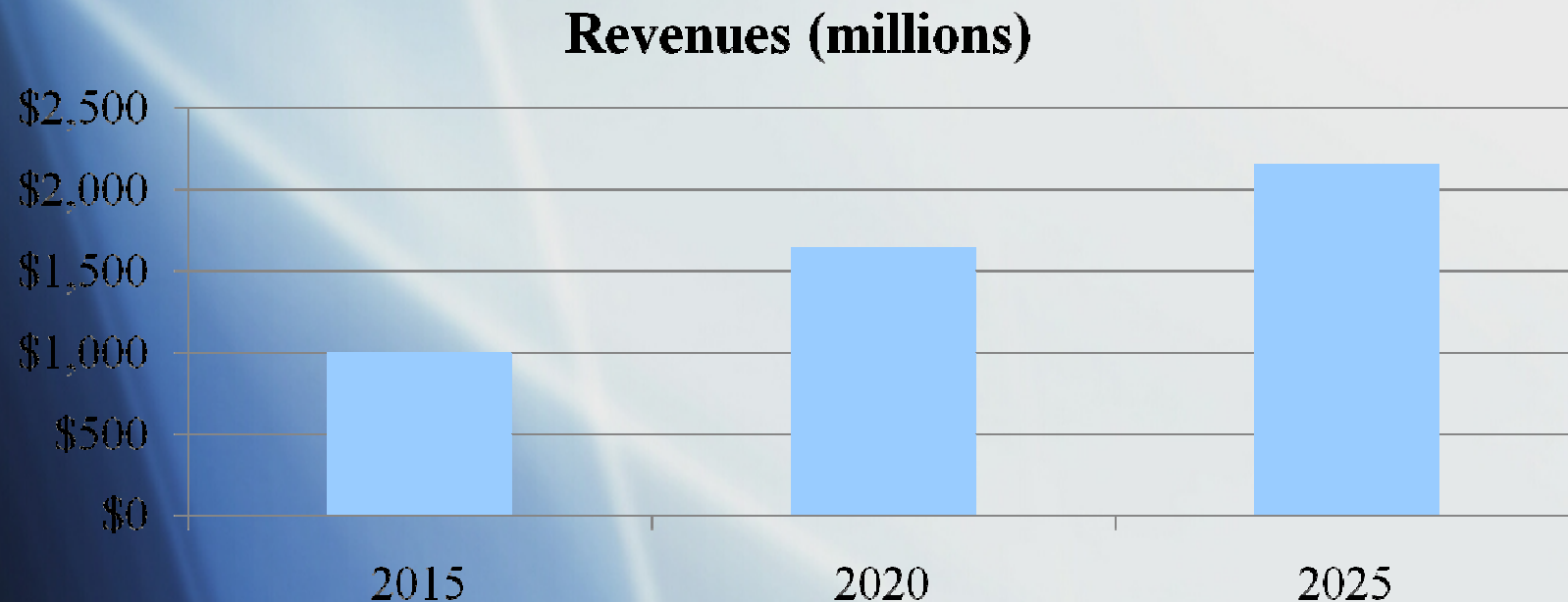
Phase A: Profit Analysis

Minimum Case Guarantee

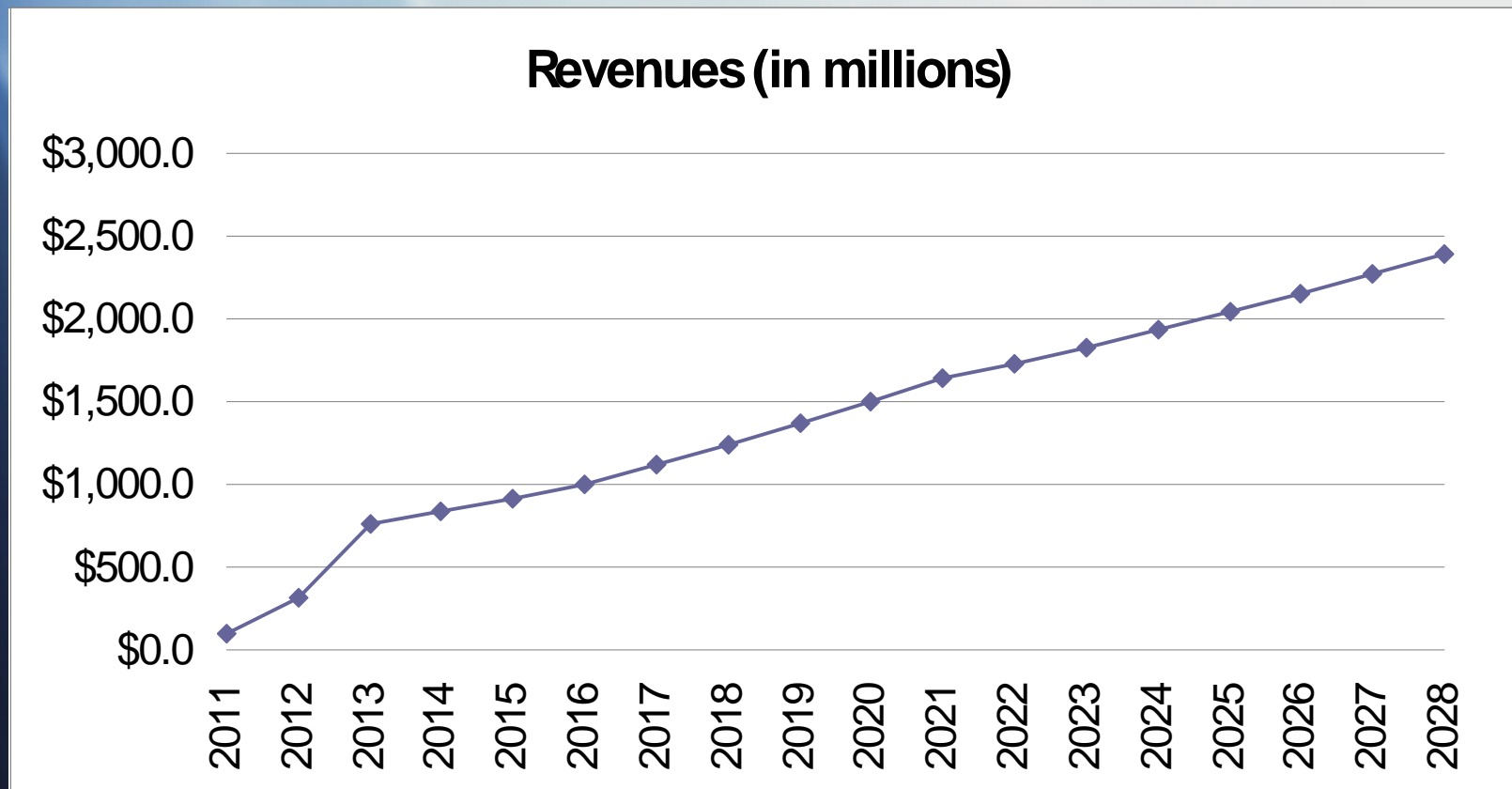


Goods Movement Rates and Revenues

<u>Phase: Destination</u>	<u>2007 RT Price</u>	<u>2011 RT Price</u>
A: ICTF	\$150	\$122
B: Bell	\$225	\$133
C: Inland Empire	\$275	\$197
D: High Desert	\$300	\$233



EMMI Project Revenues



Phase A Benefits

- 1.7M containers off the roads! 17M less truck miles in a very heavily congested area.
- Saves \$550M+ in tax dollars.
- 150,000 MT+ reduced emissions per year.
- 1.5M+ gallons of gasoline per year saved.
- 10+ lives lost to traffic accidents per year.
- Room for growth tomorrow.

Instant gratification.

Construction can start next year.

EMMI Project Summary

- Fully Operational in 2013
- Total Build-Out is \$4.4 Billion.
- Total System is 150 miles of double track.
- Cost/Mile is approximately \$29 million.
- 1000 vehicles moving in an automated system.

Areas of Strategic Partnership

- Intermodal Rail “Just in time” System
- “Just in time” logistics system.
- Automated transloading system.



EMMI Passenger Service



EMMI – Passenger System

PROJECT PHASE	CAPITAL COST
Phase E – LAX to LAX Intermodal Station	\$ 253,023,878
Phase F – LAX Intermodal to Union Station	\$ 618,600,715
Phase G – Union Station to Ontario Airport	\$ 1,157,914,590
TOTAL	\$ 2,029,539,183

Total Cost - \$ 2 Billion

EMMI Passenger Summary

- Initial System carries 65,000 to 100,000 passengers per day.
- Passenger System is profitable as stand alone system.
- The most important real estate opportunities in the US in this century. This is *additive* to the financial model.
- Growth segments in all directions.

EMMI Benefits Summary

- New, multi-billion dollar solutions provider located in Los Angeles, CA
- Zero carbon footprint solution for one of the busiest, most polluted areas of the world
- **Savings:** tax dollars, fuel, emissions, lives
- **Growth:** economy, ports/airports, activity centers

**We have a shared
vision.**