

FARMERSVILLE CITY AMENITIES BOARD

AGENDA

FEBRUARY 1ST, 2018 AT 4:15 P.M.

CITY COUNCIL CHAMBERS

205 S. MAIN ST.

FARMERSVILLE, TX 75442

- I. PRELIMINARY MATTERS**
Call to Order, Roll Call, and Recognition of Visitors
- II. APPROVAL OF MINUTES**
Minutes from January 4th, 2018 meeting
- III. SENIOR CITIZEN CENTER:**
A. Report from Woody Wright
- IV. LIBRARY/CIVIC CENTER: Trisha Dowell**
- V. PARKS AND RECREATION**
 - A. Discussion and Update on Playground equipment for City Park
 - B. Statue for Slash Pad at Ramblers Park, Dedication set for February 17th, 2018 at 11am
 - C. Music in the Park
 - D. Discuss Potential Eagle Scout projects
 - E. Consider, Discuss possible volunteer projects for the City of Farmersville conducted by the LDS Church.
 - F. Consider, Discuss and act on recommendation to the City Council to except the Public Bike Stand which will be donated by Farmersville Chamber of Commerce to be placed near the trailhead
- VI. CITY MANAGER UPDATE: Ben White**
- VII. DISCUSSION OF PLACING ITEMS ON FUTURE AGENDAS**
- VIII. ADJOURNMENT**

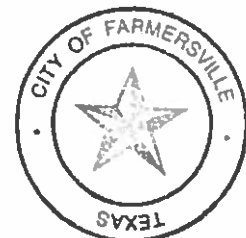
No action may be taken on comments received under "Recognition of Visitors". The Board may vote and/or act upon each of the items listed in the Agenda.

This facility is wheelchair accessible and accessible parking spaces are available. Requests for accommodations or interpretive service must be made 48 hours prior to this meeting. Please contact me at 972-782-6151 or fax 972-782-6604 for further information.

I, the undersigned authority, do hereby certify that this Notice of Meeting was posted on the front window of the City Hall building for Farmersville, Texas, in a place and manner convenient and readily accessible to the general public at all times, and said Notice was posted on January 26, 2018 by 4:00 P.M. and remained so posted continuously at least 72 hours proceeding the scheduled time of said meeting.

Dated this the 26th day of January, 2018.


Paula Jackson, City Staff Liaison





**Farmersville City Amenities Board
Minutes For
January 4th, 2018**

Suzie Grusendorf, John Young, Glenn Bagwell, Miranda Martin, Cathy Strong, and Charlotte Holloway were all present for the meeting. Also present was City Manager Ben White, Council Liaison Mayor Diane Piwko, and Paula Jackson as staff liaison.

I. CALL TO ORDER

Meeting was called to by Miranda Martin at 4:20

II. APPROVAL OF MINUTES

Approval of the December 7th, 2017 meeting minutes.

- Motion made by: Miranda Martin
- Second made by: Charlotte Holloway
- Motion Carried all in favor
-

III. MICHAEL KINARD with the Corp of Engineers

Michael Kinard came to the Board just to give information on the Caddo Park. It has been closed 7 years and it will take 2 to 3 years to get it open again. The Parks were hit hard with the floods of 2015 and tornados 2 years ago. The big issues at this time is Water. The Corp of Engineers now have a contract with the City of Farmersville to get a water line to the entrance to the Park, but that is about 1 year out. The Asphalt, restrooms and any out building will need to be redone.

Things about Caddo Park: it is day use only, 2 ponds, boat ramp to the lake, picnic area, ADA fishing dock, 2 restrooms, a walking trail and a concrete pad for a park host.

Miranda Martin ask if it would be possible for the Amenities Board to take a tour of the facilities. Michael says he would check on it.

IV. UPDATE ON THE SENIOR CITIZEN CENTER

Dorothy (Woody) Wright was not at the meeting to give a report. Cathy Strong stated all is well at the Center.

V. UPDATE ON THE LIBRARY/CIVIC CENTER

The Library is still going through their remodel and just learned the carpet is delayed, so this will push the reopen to the middle of March.

Funding: Ben stated there are no extra funding this year, but next year will need to in for computer use funding. It was mentioned the Commissioners Court didn't feel it was their place to support libraries.

Miranda Martin ask how many computers are in use now. Trisha replied they have 9 Public computers.

The Mayor and Council have gone to the Commissioners and ask for funding, it would be good for the Amenities Board to write letters. If the funding doesn't come through it may come down to the library charging for the county people to use the library.

The Civic Center is being leveled and the flooring will be replaced.

VI. UPDATE ON THE PARKS AND RECREATION

A. Ben White gave an update the new Park Equipment. 4B approved Oceanside, Serpent Pod Climber and the 3 Panel Cyclone Challenger. Miranda Martin and John Young attended the 4B meeting and was ever excited 4B also wanted the board to look into some type of sit and spin or marry - go – round. Ben White will get to Miranda Martin and come up with the option for the Sit and Spins. Ben also brought to the meeting samples of rubber mulch and a sample of the wood fiber we currently use. The Rubber mulch is very costly and wood fiber is cost effective.

Ben also stated the 4B ask him to get the cost to replace all the plastic parts not just the slide. He will get the information for them. 4B would also like to see a new swing set at Ramblers Park.

B. Music in the park, Miranda spoke up and said she word like to have more types of music. The Board review the dates on the calendars. The dates will be: June 1, 2018, July 6, 2018 and August 3, 2018.

- Motion made by: Suzie Grusendorf
- Second made by: Miranda Martin
- Motion Carried all in favor

C. Statue for the Splash Pad at Ramblers: Melissa Grabowski spoke to the board and on behalf of Layla. This little girl was a student of Ms. Grabowski's Head Start Class. Layla was diagnosed to DIPG which is a Brain Tumor that effects walking, talking and swallowing. She passed away May 17th 2017. She loved playing at the Splash Pad so Melissa and others in the community raised money to pay for the statue and they have requested that it be placed at Ramblers Park at the Splash Pad. There will be a dedication ceremony on February 17th, 2018 which is Layla's Birthday.

VII. UPDATE FROM CITY MANAGER BEN WHITE

Ben White report:

Ben reported on the following:

- JW Spain Athletic Complex improvements status.
- Downtown – repainting of the gazebo and the
- Civic Center/Library/Senior Center – Several projects approved for improvements, Senior Center parking lot and lighting, the Library floor damage due to mold. The Library to be closed for about 2 months.

VIII. DISCUSSION OF PLACING ITEMS ON FUTURE AGENDA

- Music in the park for the summer program
- Update 4B meeting on Playground Equipment
- Update on dedication for Layla's Statue

IX. ADJOURNMENT

Meeting adjourned at 5:58 PM

- Motion made by John Young
- Second by Suzie Grusendorf
- Motion passed all in favor

ATTEST:

APPROVE:

Paula Jackson, Assist to the City Manager

Glenn Bagwell Chairman



Public Work Stand

- Tool assemblies are spaced to prevent tangling
- Optimized ergonomics to work with all types of riders and bikes
- Designed for indoor or outdoor use
- Secure tool and stand fastening system
- I-beam design eliminates possibility of locking a bike to it
- ADA-compliant design

Specifications

Construction	Laser-cut steel DOM tubing
Material	Stainless steel
Tool tethering	aircraft cable
Finish Options	UV resistant powder coat, custom colors available
Galvanized	Stainless steel
Installation Options	Surface mount Embedment
Tools Included	Phillips & standard screwdrivers Steel core tire levers (2) Headset/pedal wrench 8/10 & 9/11mm cone wrenches Torx T-25 Hex key set
Dimensions	Imperial 8.5" W x 50" H x 16" D Metric 21.6 x 126 x 40.6 cm



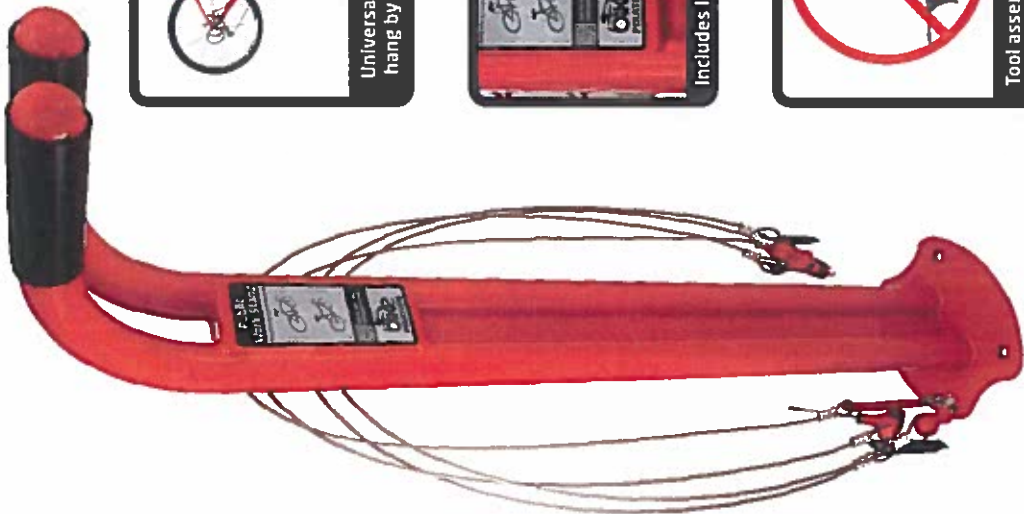
Universal bike mounting - hang by seat or top tube



Includes link to online help



Tool assemblies are spaced to prevent tangling



Security Rating

Visit www.bikefixation.com or call 612-568-3494 (USA) for more information

Helmberger, Joe

From: Sales Bike Fixation <sales@bikefixation.com>
Sent: Wednesday, January 10, 2018 4:31 PM
To: Helmberger, Joe
Subject: RE: Cycle Air and Cycle Aid

Joe,

We offer ten standard powder coat options:

 **COLOR OPTIONS**



Bike Fixation Red



Cycle Track Black
RAL 9017



Sunset Orange
RAL 2011



Signal Yellow
RAL 1023



Sprout Green
RAL 6016



Spruce Green
RAL 6005



Billy Ocean Blue
RAL 5017



Bark Brown
RAL 8019



Granite Gray
RAL 7045



Matter Gray
RAL 7016

The Outdoor pump is stainless and therefore usually left unpainted. It can be done, for an upcharge of \$84. The only caveat is that it cannot be blue, due to a patent agreement with Park Tool Company.

Let me know your thoughts; this would not impact the quote nor production time.

Thank you,

Tommy Everson
Inside Sales & Customer Service

Bike Fixation
teverson@bikefixation.com
Phone: (608) 729-6243
bikefixation.com
facebook.com/bikefixation



www.bikefixtation.com

2647 37th Ave. S Unit 1, Minneapolis MN 55406
Phone: 612-568-3498 • E-mail: info@bikefixtation.com

Installation Instructions for Bike Fixtation Public Work Stand and Floor Pump Manual 311110 RevH

Parallel Wall or object Setbacks:

Both sides of the Public Work Stand should be at least 48" from walls or other obstructions. The back of the Public Work Stand should be 12" from wall. The Public Work Stand should not protrude into a bike lane, walkway, or common area. See Figure 1.

Street Setbacks:

For Public Work Stands installed perpendicular to the street, a 60" setback is the minimum. For Public Work Stands running parallel to the street, a 96" setback is recommended.

Floor pump location:

Floor pump should be mounted inline with the Public Work Stands mounting flange 6" away. See Figure 1.

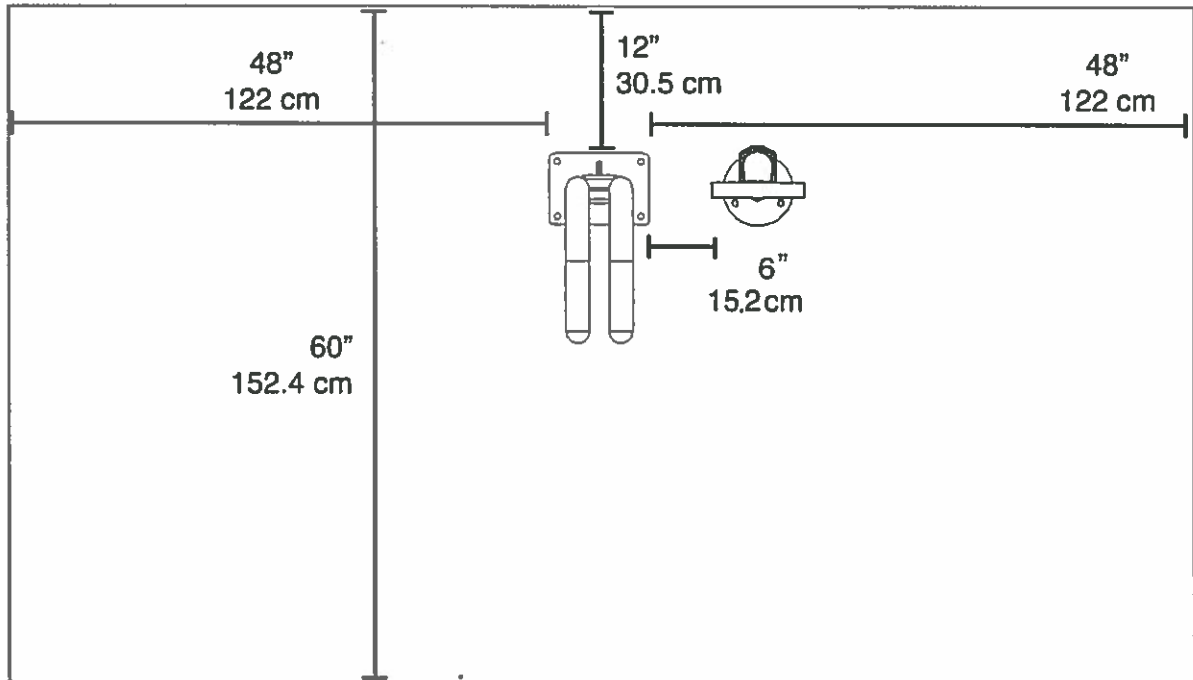


Figure 1: Setbacks

Tools Needed for Installation (Installer provides)

Tape Measure

½" Masonry Drill Bit Drill (Hammer drill recommended)

Hammer

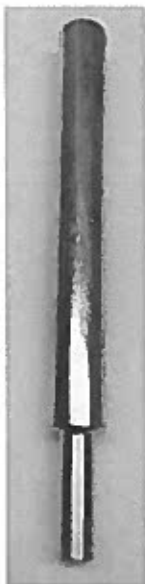
3/8" drive ratchet

Marker or Pencil

SAE hex key set

Level

Tools for Installation Provided with Equipment



Anchor Set Tool



*Penta Security Socket



Concrete Anchor

2 button head hex bolts

2 threaded concrete anchor studs

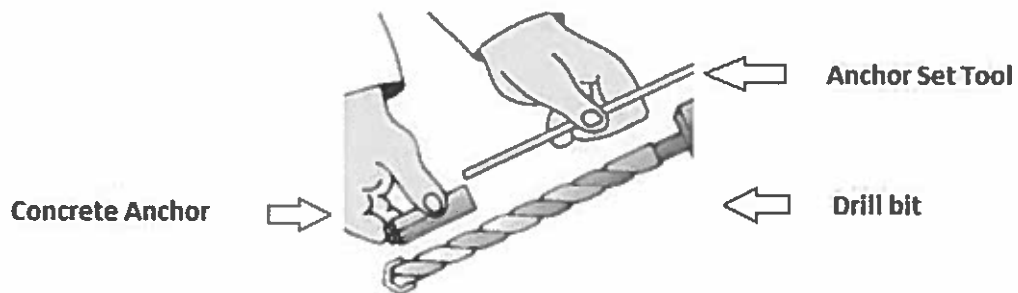
2 Penta nuts (use with anchor studs)

***DO NOT THROW AWAY THE PENTA SOCKET AFTER COMPLETING THE INSTALLATION. YOU WILL NEED IT TO REMOVE THE EQUIPMENT IS THAT IS NECESSARY.**

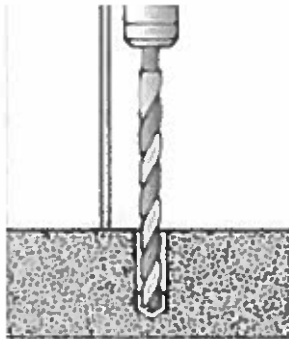
****All manual pumps also come with a tube of lubrication for the pump's piston rod. See Appendix A for Bike Fixtation's recommended preventative maintenance schedule.**

Installation

1. Place the repair stand and pump in the desired location (see setbacks). Use a marker or pencil to outline the holes of the flange onto the base material. We recommend checking the hole locations after each new anchor is placed. Ensure the holes are at least 6" away from any cracks in the base material.
2. The concrete anchor (a.k.a "drop in anchor") is a female anchor designed for use in solid concrete only and cannot be used in brick or block base material. The anchor size is designated by the inside diameter of the anchor. The Bike Fixtation Public Work Stand and Manual Pumps come with 3/8"-16 anchors. The diameter of the hole to be drilled is the same size as the outside diameter of the anchor which is 1/2".
3. When fastening to solid concrete with a drop in anchor, a hole must first be drilled into the concrete. A hammer drill should be used as it will drill the best quality hole. Once the bit is inserted into the hammer drill, the depth of the hole to be drilled can easily be set by using the depth gauge on the drill or by wrapping the bit with tape at the required depth. We recommend a drill depth of 1-5/8" deep so that the anchor just sets down flush with the surface.



4. Before starting to drill the hole, it is important that eye and ear protection are used. Make sure the hammer drill is in the hammer mode and start drilling your hole. Continue drilling until the tape on the bit or the drill gauge meets the base material- this means that the required depth has been reached.



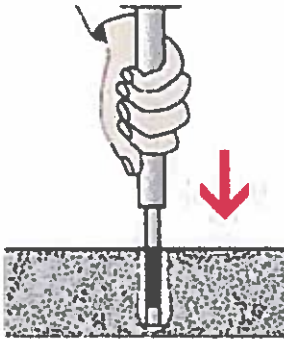
5. Before proceeding with installation, the hole must be cleaned of all concrete dust to ensure proper fastening. Use a wire brush, a vacuum or compressed air to clean out the hole completely.



**Tool to remove debris
after drilling holes.
Installer provides.**

6. Next, insert the drop in anchor with the open side up. Tap lightly to get the anchor flush with the base material.

7. Now, take the setting tool and insert it into the anchor. Strike the setting tool with the hammer until the lip of the anchor touches the lip of the setting tool. This will ensure the anchor is properly set.



8. For the Public Work Stand - place the stand over the 4 anchors. You will be using 2 studs for the Penta nuts and 2 button head hex bolts (opposite sides from each other). You will thread the studs into the anchors prior to installing the Penta nuts using the Penta socket. Use the hex wrench to tighten the button head hex bolts.
9. For the manual pump – place the pump over the 3 anchors and follow the same steps as Step 8.
10. Before tightening everything down, make sure the stand and/or pump are level and adjust accordingly with washers underneath the flanges.
11. Install cabled tools using the tool lock plate to hold the cables place. The center cable stop will rest between the tool lock plate grooves (see below image). Tighten the Penta nut on the lock plate using the Penta socket. Ensure that all tools are properly tethered and none of the tools are touching the ground. Congrats! You're finished!



Appendix A

Maintenance Item	Frequency	Part Cost	Time required
Pump head renewal	every 3-12 months as required	\$6	2 minutes
Lubrication of pump rod	every 6-12 months as required	\$1	2 minutes
Full pump overhaul	every 24+ months as required	\$30	30 minutes
Tool Replacement	As required	\$10	15 minutes

*For instructions on how to perform these tasks, please contact sales@bikefixtation.com for a copy of our High Security pump service manual.



High Security Outdoor Public Bike Pump (with Gauge)

- 2 year warranty
- Outdoor-rated stainless steel construction, completely sealed
- Proprietary long-life piston seal and solid pump rod
- Steel braided air hose core prevents cutting
- Dual pump head works on all bikes
- Longer hose available with mounting clip



Specifications

Temperature Range	
Imperial	-30 to 110° F
Metric	-34 to 43° C
Construction	
Material	Stainless steel
Pump rod	Solid core
Hose	Rubber exterior Braided steel core
Gauge cover	Polycarbonate
Pump head	Presta/Schrader (no removable parts without special tool)
Hose Length Options	
Imperial	18" or 35"
Metric	46 or 89 cm
Installation Options	
Surface or rack mount Embedment	
Maximum Pressure	
Imperial	160 psi
Metric	11 bar
Dimensions	
Imperial	9" W x 26" H x 7" D
Metric	23 x 66.3 x 17.8 cm

Security Rating



Patent Pending



Maintenance free alloy handle and weather proof gauge



QR code to online help



Longer hose and mounting clip available

Visit www.bikefixation.com or call 612-568-3494 (USA) for more information



2647 37th Ave. S, Unit 1 Minneapolis MN 55406
Phone: 612-568-3498 • E-mail: info@bikefixtation.com

www.bikefixtation.com

Bike Fixtation LLC Warranty

Bike Fixtation LLC warrants its products to the original purchaser to be free from defects in material and workmanship within a 12-24 month period (depending on product as defined below) from the date of purchase and will perform in accordance with provided original operation instructions if properly installed, used. This warranty does not cover, and Bike Fixtation shall not be liable for general wear and tear and maintenance items (example: pump heads). This limited warranty expressly excludes and does not cover damage to any product, which is caused by improper handling, alteration, misuse, vandalism, incorrect installations or damage caused by exposure to the elements or by storm, hail, fire or flood. All aforementioned occurrences will immediately void the warranty.

In addition to the standard 12 month warranty, Bike Fixtation vending machines will carry a warranty for three (3) years on the refrigeration unit, electronic control board, and the two sensor boards. The refrigeration unit consists of the compressor, fan motors, relay, and the sealed components of the system. Light bulbs, glass, and painted surfaces are not covered by this warranty.

Any product verified to be defective within that products warranty period shall upon prompt notice by its Purchaser to our Customer Service Department, be either replaced or repaired at our sole discretion. Merchandise cannot be returned without authorization from customer service and a copy of the original invoice documenting date of purchase.

Purchaser is responsible for all costs involved in sending defective product back to Bike Fixtation LLC. Warranty related inquires should be addressed to the following address: Bike Fixtation 2647 37th Ave. S, Unit 1 Minneapolis, MN 55406.

Bike Fixtation Warranty Summary:

Public Work Stand: 24 months
Deluxe Public Work Stand: 24 months
Public Toolbox: 24 months
Air Control panel and Electric Pump: 24 months
Wheel Chock: 24 months
High Security Manual Bike Pumps: 24 months

Skateboard Repair Station: 24 months
Ski & Snowboard Repair Station: 24 months
Bottle Fill Station: 24 months
Wash Station: 24 months
Wash & Fill Station: 24 months

Full Size Vending Machine: 12 months
Full Size Vending Machine Refrigeration Unit, Electronic Control Board, and Sensor Boards: 36 months
Wall Mounted Vending Machine: 24 months
Mini Wall Mount Vending Machine: 12 months