



EAST CLEVELAND

PARKS & GREENSPACE PLAN

CURRENT CONDITIONS

CITY OF EAST CLEVELAND

Brandon L. King, *Mayor*
14340 Euclid Avenue
East Cleveland, Ohio 44112



County Planning

Draft May 19, 2020



EAST CLEVELAND

PARKS & GREENSPACE PLAN

CURRENT CONDITIONS

INTRODUCTION | 4

PARKS & GREENSPACE PROFILE | 9

LAND USE PROFILE | 35

DEMOGRAPHIC PROFILE | 49

PROGRAMMING & MANAGEMENT PROFILE | 55

INTRODUCTION

The East Cleveland Park System is expansive and historic, with parks established by famed philanthropists and boasting amenities that would be the envy of other communities. With 213 acres of parkland, East Cleveland has a tremendous system to build on.

Parks are incredibly important to communities. Essential to the health and well-being of citizens, parks have been described as the "lungs of the City" due to the environmental benefits they provide. The National Recreation and Park Association tracks park benefits and have found that an acre of trees absorbs the carbon dioxide of driving a car 11,000 miles; that increased access to parks leads to a 25% increase in people exercising; and that access to parks can reduce childhood obesity. More generally, parks are places to experience nature, build community, and improve health.

OUR PURPOSE

The East Cleveland Parks & Greenspace Plan aims to describe a vision for parks in East Cleveland as a way to guide actions, boost investment, and improve the condition and safety of the City's parks. The plan is being developed by the City of East Cleveland in collaboration with residents, neighborhood groups, and regional entities. It is a long-term guide for how the community wants to improve its park system to benefit both current and future residents.



The Lake in Forest Hill Park in 1939

OUR PROCESS

This Parks & Greenspace plan will inventory the City's parks, outline the community's vision for its park system, and describe action steps to achieve that vision. Developing a plan provides the community an opportunity to give input on the general direction of the park system. It prepares residents for changes, guides future improvements, and gives a competitive advantage when applying for grants and funding.

The East Cleveland Parks & Greenspace Plan is organized into five phases. These phases are described in more depth below:

- **Current Conditions:** This phase outlines current park amenities, analyzes demographics and land use, and identifies areas lacking park space
- **Vision for Parks:** In this phase, residents outline their vision for how parks should change, expand, or be preserved
- **Recommendations:** In this phase, action steps are identified that can be taken to achieve the community's vision for parks
- **Implementation:** This phase outlines priorities and responsibilities for actions to show how to accomplish each
- **Parks & Greenspace Plan Document:** In this final phase, the previous pieces are combined into a complete, final document

PROCESS STEPS



CURRENT CONDITIONS
(Current Phase)



VISION FOR PARKS



RECOMMENDATIONS



IMPLEMENTATION



**PARKS & GREENSPACE
PLAN**



The Lake in Forest Hill Park today

Source: Flickr user Mark Souther

EAST CLEVELAND

PARK OVERVIEW



213
ACRES OF
PARKLAND



7
PARKS



12.3
ACRES PER
1,000 RESIDENTS





90%

RESIDENTS WITHIN
TEN MINUTE
WALK OF A PARK



2.4

MILES OF
TRAILS

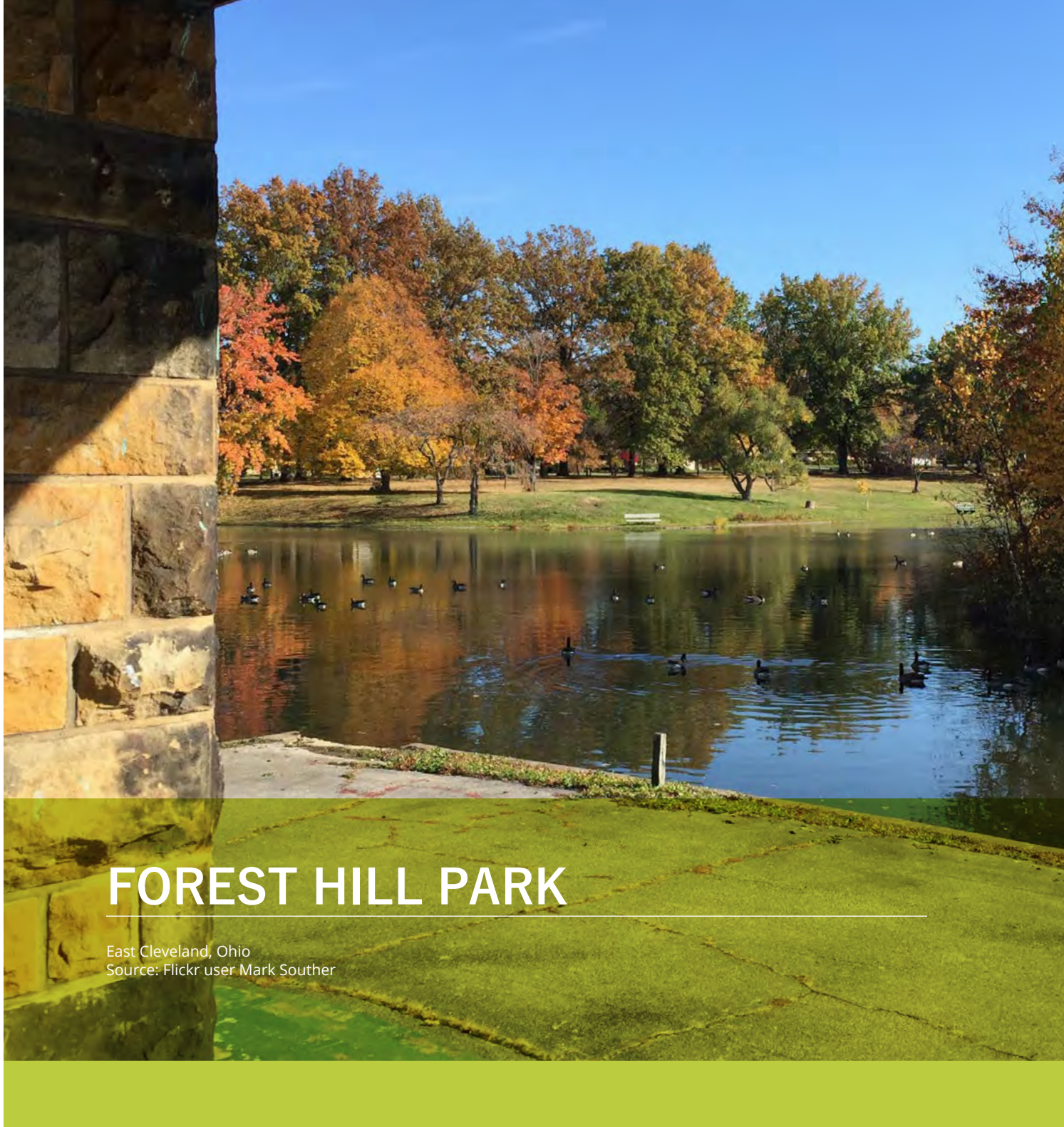


99%

STREETS WITH
SIDEWALKS

FOREST HILL PARK

Source: County Planning



FOREST HILL PARK

East Cleveland, Ohio
Source: Flickr user Mark Souther



SECTION 1

PARKS & GREENSPACE PROFILE

This Section provides an overview of existing parks and greenspaces in East Cleveland and compares them to national metrics for the size, type, and amenities of similar park systems. It also includes an overview of regional park amenities and identifies areas of park need.

Included in this Section are the following analyses:

- Parks & Greenspace Analysis, page 10
- Citywide Inventory, page 14
- Forest Hill Park, page 16
- Pattison Park, page 20
- Superior Hill Park, page 22
- Hawley Park, page 24
- MLK Civic Center, page 26
- Mann Avenue Park, page 28
- Regional Parks Analysis, page 30
- Park Needs Assessment, page 32

PARKS & GREENSPACE ANALYSIS

The parks and greenspaces in the City of East Cleveland range from small neighborhood greens to expansive, formal parks. This analysis identified all of the existing parks, greenspaces, and other open spaces in the City to determine the amount of parkland available to residents.

CITY PARKS & GREENSPACES

The City of East Cleveland has seven major parks as shown on Map 1. Together these total 213.2 acres and account for 10.7% of the City's total land area. This equates to 12.3 acres of parkland per 1,000 residents.

Based on an analysis of the size and function of the City's parks, County Planning classified them as Neighborhood, Community, or Regional Parks. The tally includes four Neighborhood Parks, two Community Parks, and one Regional Park as shown in Figure 1.

Two parks, Forest Hill and Caledonia, are split between the Cities of East Cleveland and Cleveland Heights. The acreages for the Cleveland Heights portions are shown in the table, but calculations of parks per person only include the East Cleveland portions of the parks.



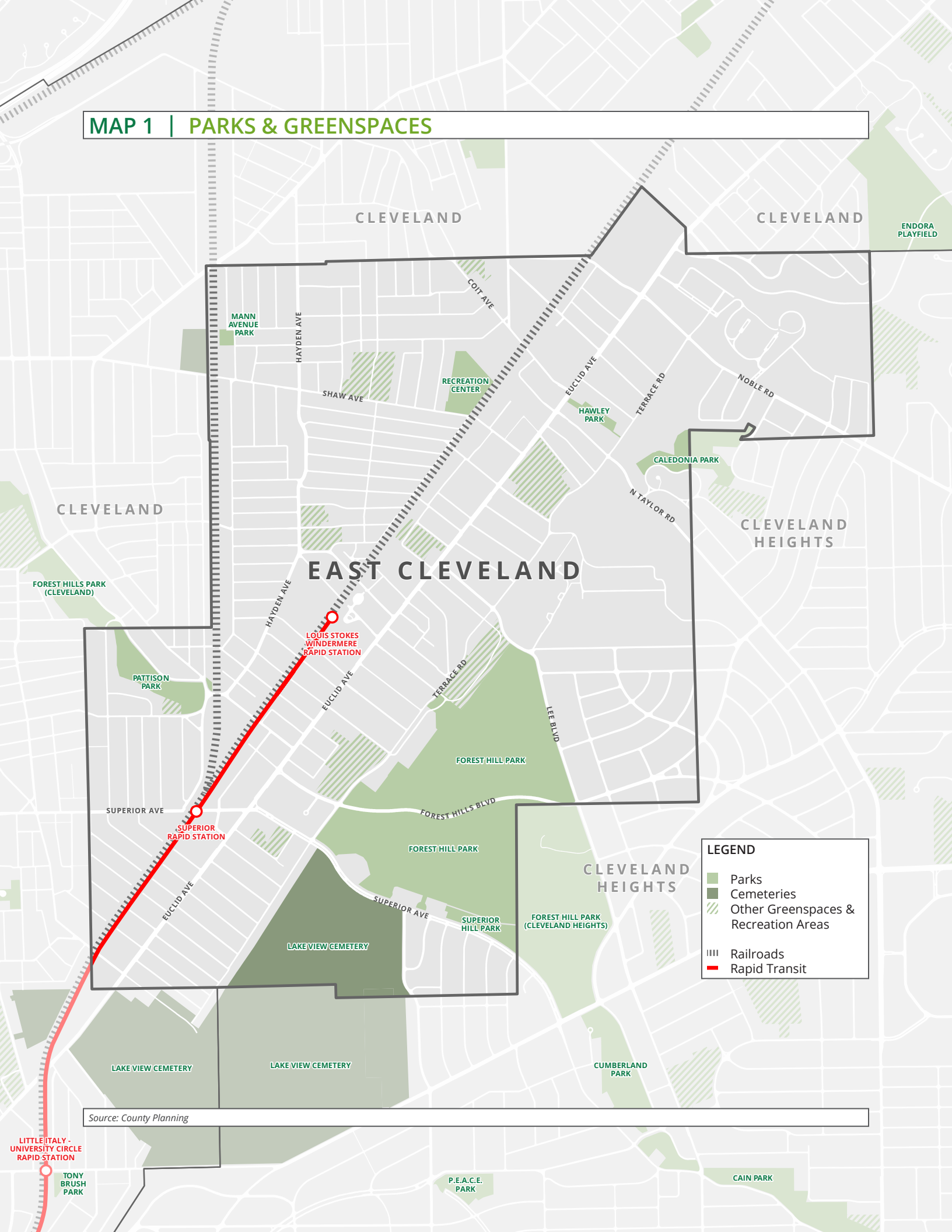
Pattison Park is a community park featuring 13 acres of picnic areas, basketball courts, and other amenities.

Source: County Planning

FIGURE 1
PARKS & GREENSPACES

	Park	Acres	City
Neighborhood Parks	Hawley	2.4 ac	E. Cleveland
	Mann Avenue	1.1 ac	E. Cleveland
	Superior Hill	6.1 ac	E. Cleveland
	Caledonia	5.3 ac 9.3 ac	E. Cleveland Cleveland Hts
Community Parks	MLK Civic Center	9.3 ac	E. Cleveland
	Pattison	13.0 ac	E. Cleveland
Regional Parks	Forest Hill	176.0 ac	E. Cleveland
		73.3 ac	Cleveland Hts
TOTAL ACREAGE		213.2 ac	(East Cleveland Only)

MAP 1 | PARKS & GREENSPACES



LEGEND

- Parks
- Cemeteries
- Other Greenspaces & Recreation Areas
- Railroads
- Rapid Transit

Source: County Planning

LITTLE ITALY - UNIVERSITY CIRCLE RAPID STATION
TONY BRUSH PARK

ENDORA PLAYFIELD

OTHER GREENSPACES AND RECREATION AREAS

In addition to traditional park spaces, the City of East Cleveland has other greenspaces and recreation areas available to residents. Not all of these spaces are open to residents at all times; however, they are components of the complete recreation environment available.

The City of East Cleveland has 12 other spaces on this list, including five public school sites, two indoor spaces, and five other open spaces as shown in the table to the right. These areas total 139.3 acres of land, accounting for 7.0% of the total land area of the City. Importantly, many of these acres are taken up by buildings such as schools and market halls which limit the amount of usable space for outdoor recreation. This calculation does not include the MLK Civic Center, which is separately listed as a City park.

PREVIOUS PARKS & GREENSPACES

The 2003 East Cleveland Master Plan included a detailed overview of existing parks and greenspaces throughout the community as well as recommendations for improvements or changes. The planning document included a description of a series of small, neighborhood or pocket parks that existed at the time of the Plan. These included the following:

- Coit Avenue Park
- Delmont Avenue Park
- Mayfair School Park
- Northfield Avenue Park
- Scioto Avenue Park
- Strathmore Avenue Park
- Wadena Park

These previous parks no longer qualify in today's analysis for a variety of reasons. The 2003 Master Plan recommended that Coit Avenue Park, Scioto Avenue Park, and Strathmore Avenue Park be removed due to their small size and limited functionality. Delmont Avenue Park, Northfield Avenue Park, and Wadena Park were all identified as small parks that could be retained, expanded, or replaced; however, the ensuing Great Recession left many of these former parks as unmaintained lots that are not functioning as park spaces. Finally, Mayfair School Park was rebuilt as part of the demolition and reconstruction of Mayfair Elementary School. It currently functions as a neighborhood park and playground but is owned and maintained by the East Cleveland School District and is listed under Other Parks & Greenspaces.

FIGURE 2
OTHER GREENSPACES AND RECREATION AREAS

	Park	Acres	Location
Public Schools	Superior Elem.	3.1 ac	E. Cleveland
	Chambers Elem.	10.2 ac	E. Cleveland
	Mayfair Elem.	3.9 ac	E. Cleveland
	Heritage Middle	11.2 ac	E. Cleveland
Indoor Spaces	Shaw High	13.5 ac	E. Cleveland
	MLK Civic Center	9.3 ac*	E. Cleveland
Other Open Spaces	Coit Road Farmers Market	1.8 ac	E. Cleveland
	Lake View Cemetery	74.4 ac	E. Cleveland
		120.2 ac	Cleveland Hts
		89.9 ac	Cleveland
	NEORSD Green Infra. #1	2.4 ac	E. Cleveland
	NEORSD Green Infra. #2	5.6 ac	E. Cleveland
	Former Huron Hospital Site	11.9 ac	E. Cleveland
Former Rozelle Elementary Site	1.3 ac	E. Cleveland	
TOTAL ACREAGE*		139.3 ac	(E. Cleveland Only)

*MLK Civic Center acreage not included in total as it is listed in Figure 1

COMPARISON TO NATIONAL METRICS

The National Recreation and Park Association (NRPA) established guidelines in 1987 to assess recreation needs by providing communities with general benchmarks for types and amounts of park acreage needed for a given population. More recently, the NRPA determined that these 'standards' did not reflect the unique circumstances of the nation's communities and replaced them with benchmarks and comparison communities to help customize the comparisons for communities of different sizes, regions, and budgets.

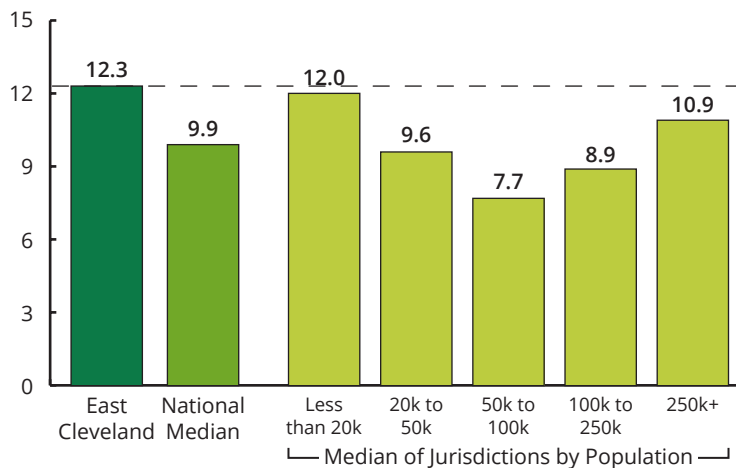
The National Recreation and Park Association maintains a database with self-reported information on 1,075 park systems and agencies across the United States. The data is useful in understanding how similar communities compare to East Cleveland in the size and number of parks.

Figure 3 shows the acres of parkland located within East Cleveland compared to the national median and to various jurisdictions based on their population sizes. At 12.3 acres of parkland per 1,000 residents, East Cleveland has more park acres per resident than the national median as well as more acres per resident than the median for other communities with fewer than 20,000 residents.

Figure 4 shows the number of residents per park in East Cleveland. On average, each of the seven parks in East Cleveland serve 2,474 residents. This is slightly more residents per park than the national median and more than similarly sized communities.

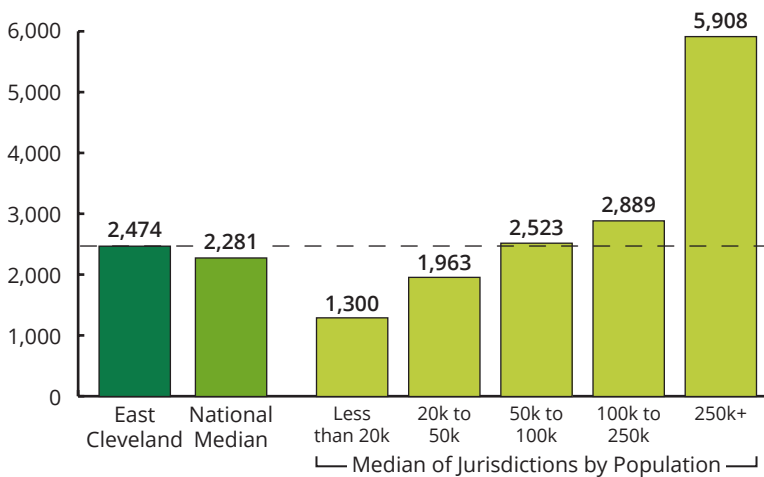
Together these comparisons indicate that East Cleveland has more expansive parklands than most communities, but they are clustered in a slightly smaller number of total parks than the median.

FIGURE 3
ACRES OF PARKLAND PER 1,000 RESIDENTS



Source: County Planning; National Recreation and Parks Association, "2020 NRPA Agency Performance Review: Park and Recreation Agency Performance Benchmarks"

FIGURE 4
RESIDENTS PER PARK



Source: County Planning; National Recreation and Parks Association, "2020 NRPA Agency Performance Review: Park and Recreation Agency Performance Benchmarks"

CITYWIDE INVENTORY

The citywide inventory lists the type and number of amenities and features for City-maintained parks in East Cleveland. It can be used to understand the opportunities for recreation in the community.

BUILDING THE INVENTORY

The inventory shown in Figure 6 on page 15 was completed through in-person site visits, aerial imagery, proprietary fly-over imagery, previous studies, and consultations with governmental agencies. It does not account for the quality of amenities, which are in various states of repair. Rather, the inventory identifies the number of amenities as if they were in usable condition to show how a fully repaired park system as presently configured could serve residents.

The inventory does not include any features or amenities in Caledonia Park, as all amenities in the park are located on the Cleveland Heights side.

An inventory of amenities in Forest Hill Park was completed in 2019 for both East

Cleveland and Cleveland Heights. Because of the park's size, this inventory was not fully reproduced, and data from the previous park inventory was used. In some instances, the amenities and features listed account for only those amenities in East Cleveland as they were easily resurveyed, while in other cases all park amenities are listed.

COMPARISONS TO NATIONAL METRICS

The NRPA metrics provide a comparison of the number of amenities communities provide per person. In measuring East Cleveland against parks and recreation agencies nationwide and in similarly sized cities, East Cleveland performs very well. East Cleveland has more basketball courts, tennis courts, and playsets per resident than agencies nationally. East Cleveland lags in multi-purpose fields, with only one field for all 17,321 residents compared to one field per 8,150 residents among all agencies with this amenity. These comparisons are shown in Figure 5.

FIGURE 5
PERSONS PER AMENITY AND FEATURE, EAST CLEVELAND AND COMPARISON COMMUNITIES

Amenity or Feature	Total in East Cleveland	Persons per Amenity			% of All Agencies with Amenity
		East Cleveland	All Agencies	Jurisdictions Less than 20,000 People	
Basketball Courts	6 Courts	2,887	7,400	4,090	86.5%
Tennis Courts	14 Courts	1,237	5,004	2,922	81.1%
Multi-Purpose Fields	1 Field	17,321	8,150	4,689	64.5%
Playset/Swings	7 Playsets	2,474	3,750	2,523	93.9%
Recreation Centers	1 Center	17,321	31,141	8,916	61.0%
Performance Area	1 Amphitheater	17,321	62,475	10,812	35.0%

Source: County Planning; Cleveland Metroparks, "Forest Hill Park Assessment," 2019; National Recreation and Park Association, 2020 NRPA Agency Performance Review

FIGURE 6
PARK AMENITIES AND FEATURES, EAST CLEVELAND

Amenity or Feature		Forest Hill Park	Pattison Park	Superior Hill Park	Hawley Park	MLK Civic Center	Mann Park	Total
Recreational Elements	Basketball Courts	1	2	1	2	-	-	6 Courts
	Tennis Courts	8	6	-	-	-	-	14 Courts
	Baseball Fields	4	2	1	-	-	1	8 Fields
	Football/Soccer Fields	-	-	-	-	1	-	1 Field
	Track	-	-	-	-	1	-	1 Track
	Bleachers	21*	3	-	-	3	-	27 Bleachers
	Fitness Stations	-	5	-	-	6	-	11 Stations
Site Features	Trash Cans	104*	2	-	4	7	-	117 Cans
	Permanent Benches	47*	13	-	9	2	-	71 Benches
	Grills	16*	-	-	1	2	-	19 Grills
	Bike Racks	2*	-	-	-	1	-	3 Racks
	Picnic Tables	45*	8	-	2	4	2	61 Tables
	Playset/Swings	2	1	2	1	1	-	7 Playsets
	Signage	9*	1	-	1	1	-	12 Signs
Infrastructure	Trails/Sidewalks	Yes	Yes	Yes	Yes	Yes	No	-
	Parking Lots/Drives	Yes	No	Yes	Yes	Yes	No	-
	Fencing	Yes	Yes	Yes	Yes	Yes	Yes	-
	Walls	Yes	Yes	No	No	Yes	No	-
Utilities	Water Lines	Yes	-	-	-	-	-	-
	Drinking Fountain	5*	-	-	-	-	-	5 Fountains
	Fire Hydrant	4*	1	-	-	1	-	6 Hydrants
	Light Poles	91*	11	3	5	11	1	122 Poles
	Storm Lines	Yes	-	-	-	-	-	-
	Sanitary Lines	Yes	-	-	-	-	-	-
Buildings/ Structures	Pavilion/Picnic Shelter	3	1	-	2	1	-	7 Shelters
	Concession Stands	-	1	-	-	-	-	1 Stand
	Restrooms	2	1	-	-	-	-	3 Restrooms
	Performance Area	-	1	-	-	-	-	1 Stage
	Other Buildings	5*	-	-	-	-	-	5 Buildings
	Historic Features	Yes	Yes	Yes	-	-	-	-

*Includes amenities and features in both East Cleveland and Cleveland Heights
 **Caledonia Park is not listed as all park amenities are located on the Cleveland Heights side of the park
 Source: County Planning; Cleveland Metroparks, "Forest Hill Park Assessment," 2019

FOREST HILL PARK

Forest Hill Park is the largest park in East Cleveland, and it rivals the size, natural features, and amenities of many regional parks. The park has a unique history and an important place in the development of East Cleveland and surrounding communities.

HISTORY

The modern history of Forest Hill Park began around 1873 when John D. Rockefeller, Sr. purchased the first 79-acre tract of land that would later become the park. Rockefeller originally intended to use the land for economic purposes: as a sanatorium, a place of public resort, and a summer club. These ventures ultimately failed, and the Rockefellers adopted Forest Hill and its 75-room Queen Anne style home as the family's summer residence. The family constructed carriage paths, installed landscaping, and laid out a golf course while leaving much of the original wooded land intact. Even after moving to New York in 1884, the family spent many summers in Forest Hill.

In 1915 Rockefeller's wife, Laura Spelman Rockefeller, died, and a fire gutted the mansion two years later. John D. Rockefeller, Sr. opted to sell the land to his only son, John D. Rockefeller, Jr. in 1923. The younger son developed plans for a residential neighborhood on part of the site, in which 81 homes were built that can now be seen in East Cleveland's Forest Hill Historic District. Upon the death of his father in 1937, Rockefeller Jr. offered to donate the remaining land to the Cities of East Cleveland and Cleveland Heights for the development of Forest Hill Park.

To transform the estate into a park, A.D. Taylor, the President of the American Society of Landscape Architects, was hired. Taylor developed a plan for the park in 1938, which was adopted by the Cities of East Cleveland and Cleveland Heights shortly thereafter. The plan used many existing site features, including converting the carriage paths into trails, enlarging the boating pond and adding a boat house, and converting the golf course into the Great Meadow. Over the course of the next twelve years, these and many other features were added to the park, largely funded by the Works Progress Administration.

In the years following the death of A.D. Taylor in 1951, investments continued to be made in Forest Hill Park, some of which deviated from his initial plan. The City of Cleveland Heights constructed a complex of ballfields that replaced part of the Great Meadow and added a Community Center along Mayfield Road. Around the same time, however, a number of social and fiscal issues in East Cleveland limited new investments on that side of the park. While the East Cleveland side shows significant maintenance issues today, this has preserved many original features and landscapes of the park, which remains a treasured part of East Cleveland.



The 1938 Development Plan for Forest Hill Park was developed by A.D. Taylor and displayed the proposed park layout, features, and amenities.

Source: Cleveland Public Library

FOREST HILL PARK SITE



PARK OVERVIEW

Forest Hill is a Regional Park split between East Cleveland and Cleveland Heights. It encompasses a total of 249.3 acres, with 176.0 acres in the City of East Cleveland. The parkland within East Cleveland is owned by the City of East Cleveland and goes by the original name of the park as identified in the 1938 A.D. Taylor Park Plan: Forest Hill Park. In Cleveland Heights, the park has occasionally gone by Forest Hills Park and the Boulevard running through the park likewise has been termed Forest Hills Boulevard. For the purpose of this plan, both sides of the park have been termed "Forest Hill Park."

Park maintenance falls to the Cities of East Cleveland and Cleveland Heights; however, many groups participate in the maintenance of the park, including the East Cleveland Parks Association and other regional entities. As part of the original agreement establishing the park, a joint committee from East Cleveland and Cleveland Heights is required to approve changes to the park, but this committee does not meet regularly.

Measured by those living within a 1/2 mile walk of park entrances, Forest Hill serves an estimated population of 5,555 East Clevelanders, including 1,000 children. Because of its location straddling the border of Cleveland Heights, this park also serves residents of Cleveland Heights, which has constructed its Community Center at the park's southern edge on Mayfield Road.

SITE FEATURES

Forest Hill Park is the largest park in East Cleveland and offers unparalleled amenities that are only possible due to its size, terrain, and history. The East Cleveland side of the park includes a lake and boat house, a sledding hill, lawn bowling areas, baseball diamonds, tennis courts, and a series of wooded trails. The park also features historic elements including a pedestrian bridge, restrooms, and other structures dating from the early 20th Century. Because of its location along the Portage Escarpment, the park also provides views of Lake Erie from certain points along the ridge.

Most of the amenities within Forest Hill Park require significant maintenance. Despite the best efforts of volunteer organizations who have dedicated thousands of hours to park maintenance, a 2019 assessment of the park concluded that the existing features would require \$12M to \$14M to replace the obsolete and worn infrastructure.

FIGURE 7
FOREST HILL PARK OVERVIEW

Park Features		
Acreage	176.0 Acres (East Cleveland)	
	73.3 Acres (Cleveland Heights)	
Ownership	East Cleveland/Cleveland Hts	
Maintenance	East Cleveland/Cleveland Hts	

Population in 1/2 Mile Walk Shed		
Children	1,000	18.0%
Young Adults	1,165	21.0%
Working Age	2,101	37.8%
Seniors	1,290	23.2%
Total Population	5,555	100%
Acres of Park per 1,000 Residents Served	44.9 Acres per 1,000 Residents	

FOREST HILL PARK AMENITY OVERVIEW

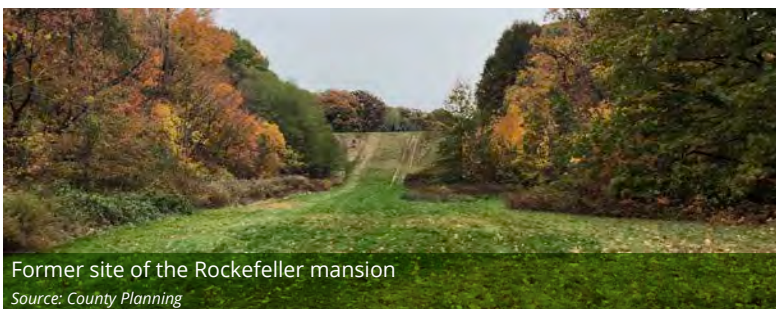
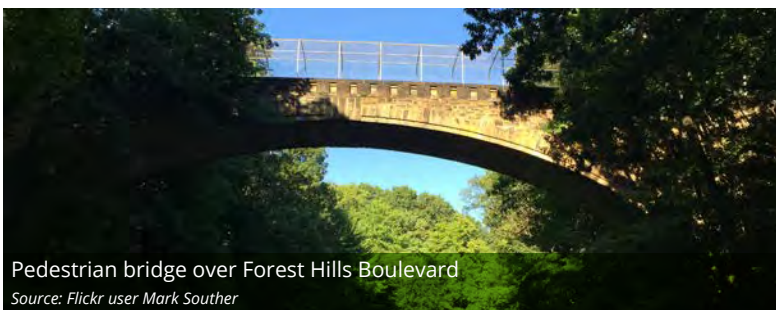
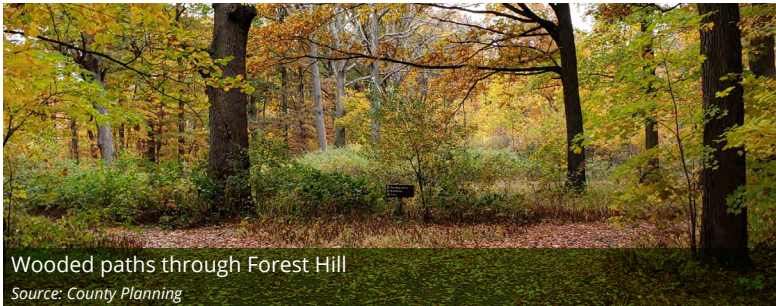


FIGURE 8
FOREST HILL PARK AMENITIES & FEATURES

	Amenity or Feature	Quantity
Recreational Elements	Basketball Courts	1 Court
	Tennis Courts	8 Courts
	Baseball Fields	4 Fields
	Football/Soccer Fields	-
	Track	-
	Bleachers*	21 Bleachers
Site Features	Fitness Stations	-
	Trash Cans*	104 Cans
	Permanent Benches*	47 Benches
	Grills*	16 Grills
	Bike Racks*	2 Racks
	Picnic Tables*	45 Tables
	Playset/Swings	2 Sets
Infrastructure	Signage*	9 Signs
	Trails/Sidewalks	Yes
	Parking Lots/Drives	Yes
	Fencing	Yes
Utilities	Walls	Yes
	Water Lines	Yes
	Drinking Fountain*	5 Fountains
	Fire Hydrant*	4 Hydrants
	Light Poles*	91 Poles
	Storm Lines	Yes
	Sanitary Lines	Yes
Buildings/ Structures	Pavilion/Picnic Shelter	3 Shelters
	Concession Stands	-
	Restrooms	2 Restrooms
	Performance Area	-
	Other*	5 Buildings

*Includes amenities and features in both East Cleveland and Cleveland Heights

PATTISON PARK

Pattison Park is a large Community Park located on the western border of East Cleveland and encompassing 13.0 acres of land. The land is owned by the City of Cleveland but maintained and operated by the City of East Cleveland as part of a long-term lease.

Measured by those living within a 1/2 mile walk of park entrances, Pattison Park serves an estimated population of 2,873 East Clevelanders, including 673 children. Because of its location on the Cleveland border, this park also serves a portion of Clevelanders.

HISTORY

The land that comprises Pattison Park was acquired by the City of Cleveland in the early 20th Century to construct Forest Hill Parkway, a proposed boulevard from Euclid Avenue in East Cleveland to Lake Shore Boulevard in Bratenahl. Never completed, the boulevard plan was abandoned and the land leased to East Cleveland in the 1930s to be used as a park. The land remains owned by the City of Cleveland.

Adjacent to Pattison Park is the site of the former Rozelle Elementary School, which was demolished in 2010. The land was slated to become a bus garage before proponents encountered pushback from park advocates. While not presently part of Pattison Park, the vacant land has potential for complementary uses or park expansion.

SITE FEATURES

Pattison Park is one of the most heavily used parks in East Cleveland. It has an impressive assortment of amenities including baseball fields, basketball courts, and a variety of historic features and structures such as a concession stand and restrooms. Many current amenities require significant maintenance, especially the existing tennis courts, which are deteriorated and abandoned, and surrounded by large overgrowth against the perimeter chain link fences.

The Northeast Ohio Alliance for Hope (NOAH), East Cleveland's community development corporation, has focused community building efforts on this park. The group has held concerts and events, and has coordinated clean-up efforts. To further expand events and concerts, lighting connections and functioning restrooms and concessions could be added.

The park is mostly open along its eastern and northern boundaries along Thornhill Drive. The southern and western boundaries of the park are immediately adjacent to the rear of homes along Speedway Overlook and Carlyon Road; however, some homes have been demolished and present opportunities for new park access points.

FIGURE 9
PATTISON PARK OVERVIEW

Park Features		
Acreage	13.0 Acres	
Ownership	City of Cleveland	
Maintenance	City of East Cleveland	
Population in 1/2 Mile Walk Shed		
Children	637	22.2%
Young Adults	551	19.2%
Working Age	1,188	41.3%
Seniors	497	17.3%
Total Population	2,873	100%
Acres of Park per 1,000 Residents Served	4.5 Acres per 1,000 Residents	

PATTISON PARK AMENITY OVERVIEW

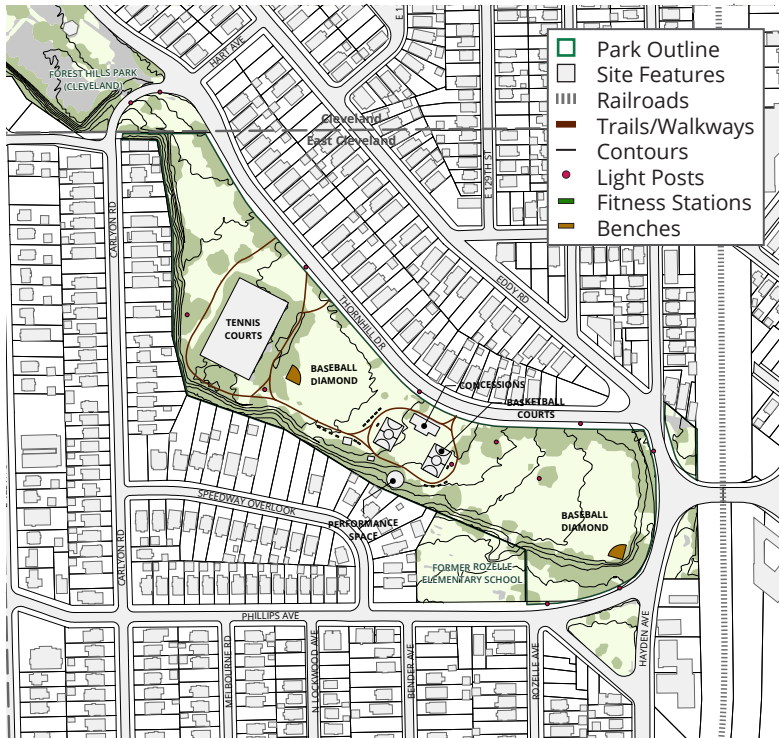


FIGURE 10
PATTISON PARK AMENITIES & FEATURES

	Amenity or Feature	Quantity
Recreational Elements	Basketball Courts	2 Courts
	Tennis Courts	6 Courts
	Baseball Fields	2 Fields
	Football/Soccer Fields	-
	Track	-
	Bleachers	3 Bleachers
Site Features	Fitness Stations	5 Stations
	Trash Cans	2 Cans
	Permanent Benches	13 Benches
	Grills	-
	Bike Racks	-
	Picnic Tables	8 Tables
	Playset/Swings	1 Playset
Infrastructure	Signage	1 Sign
	Trails/Sidewalks	Yes
	Parking Lots/Drives	No
	Fencing	Yes
Utilities	Walls	Yes
	Water Lines	-
	Drinking Fountain	-
	Fire Hydrant	1 Hydrant
	Light Poles	11 Poles
	Storm Lines	-
Buildings/ Structures	Sanitary Lines	-
	Pavilion/Picnic Shelter	1 Shelter
	Concession Stands	1 Stand
	Restrooms	1 Restroom
	Performance Area	1 Stage



SUPERIOR HILL PARK

Superior Hill Park is a Neighborhood Park located on the northeast side of Superior Boulevard and encompassing 6.1 acres of land. The park is owned and operated by the City of East Cleveland.

Measured by those living within a 1/2 mile walk of park entrances, Superior Hill Park serves an estimated population of 1,308 East Clevelanders, including 378 children. Compared to other parks in the East Cleveland park system, this neighborhood park serves the youngest nearby population, with almost two-thirds (64.1%) of nearby residents younger than 35.

HISTORY

While Superior Hill Park functions as a Neighborhood Park, it is technically part of the larger Forest Hill Park located in East Cleveland and Cleveland Heights. Superior Hill Park functions separately because of the large ravine that separates Superior Hill from the rest of Forest Hill. Because it is included as part of the parcels that comprise Forest Hill Park, the boundaries of Superior Hill Park are not clearly defined.

Superior Hill's parkland was included in the 1938 design for Forest Hill Park completed by A.D. Taylor. The area today known as Superior Hill Park was identified then as a location for bowling greens, parking areas, a play area, and a circular green.

SITE FEATURES

Superior Hill Park is highly visible from Superior Road and is surrounded by a relatively intact neighborhood and large apartment blocks.

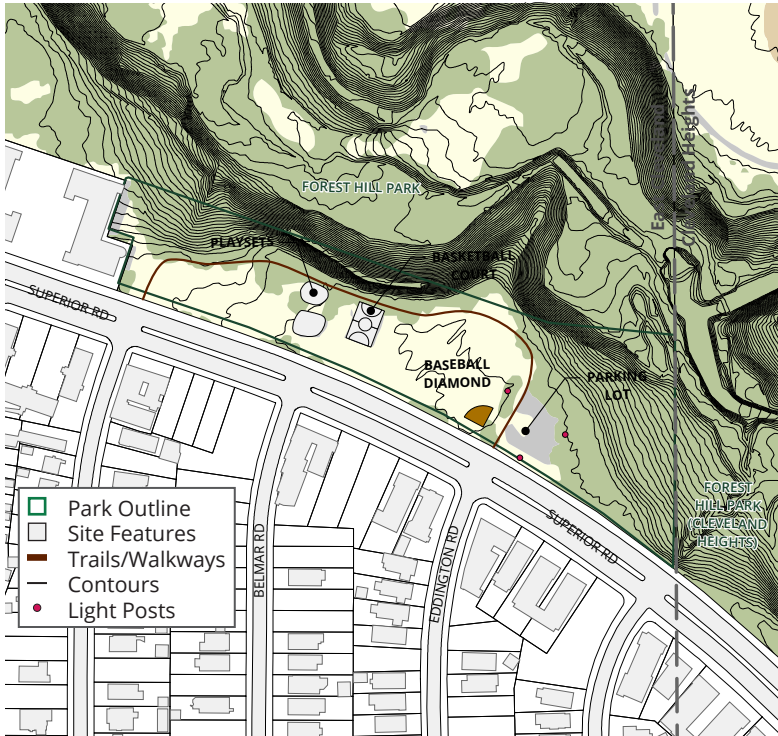
The park includes a number of amenities including two playsets, a basketball court, and a loop trail. The park also contains areas formerly used as a baseball diamond and parking lot. These areas are heavily damaged and no longer support those uses. The lighting and entrance gate to the parking lot remain.

The park has in the past had pathways that connected it to the main parts of Forest Hill Park. There are also areas of parkland atop this ridge behind the existing apartment towers just west of Superior Hill that could be included in the defined area of Superior Hill Park.

FIGURE 11
SUPERIOR HILL PARK AMENITIES & FEATURES

Park Features		
Acreage	6.1 Acres	
Ownership	City of East Cleveland	
Maintenance	City of East Cleveland	
Population in 1/2 Mile Walk Shed		
Children	378	28.9%
Young Adults	460	35.2%
Working Age	357	27.3%
Seniors	113	8.6%
Total Population	1,308	100%
Acres of Park per 1,000 Residents Served	4.7 Acres per 1,000 Residents	

SUPERIOR HILL PARK AMENITY OVERVIEW



Source: County Planning



Source: County Planning

FIGURE 12
SUPERIOR HILL PARK AMENITIES & FEATURES

	Amenity or Feature	Quantity
Recreational Elements	Basketball Courts	1 Court
	Tennis Courts	-
	Baseball Fields	1 Field
	Football/Soccer Fields	-
	Track	-
	Bleachers	-
Site Features	Fitness Stations	-
	Trash Cans	-
	Permanent Benches	-
	Grills	-
	Bike Racks	-
	Picnic Tables	-
Infrastructure	Playset/Swings	2 Playsets
	Signage	-
	Trails/Sidewalks	Yes
	Parking Lots/Drives	Yes
	Fencing	Yes
	Walls	No
Utilities	Water Lines	-
	Drinking Fountain	-
	Fire Hydrant	-
	Light Poles	3 Poles
	Storm Lines	-
Buildings/ Structures	Sanitary Lines	-
	Pavilion/Picnic Shelter	-
	Concession Stands	-
	Restrooms	-
	Performance Area	-

HAWLEY PARK

Hawley Park is a Neighborhood Park located in the north-central portion of East Cleveland in the middle of the block bounded by Euclid Avenue, Taylor Road, Terrace Road, and Hastings Avenue. The park encompasses 2.4 acres of land, and is owned and operated by the City of East Cleveland.

The park serves an estimated population of 3,649 residents of East Cleveland within a 1/2 mile walk of park entrances, including 701 children.

SITE FEATURES

Hawley Park can be accessed by a main entrance from Euclid Avenue and a narrow pedestrian access point on Terrace Road. The park is located in the center of the block and is not highly visible from major roads. The entrance from Euclid Avenue requires users to traverse a parking lot that serves nearby businesses. This presents hazards for pedestrians going to and from the park, reduces awareness of the park, and can make it feel isolated for those using it.

While relatively small, Hawley Park provides a number of amenities for residents including a playset, picnic shelters, and two basketball courts. The quality of these amenities range from fair condition to poor condition. Relatively recent investments in the park include the playset, which requires only minor maintenance.

A number of buildings that back up to Hawley Park have been demolished in recent years, providing the opportunity to expand the park, open sight lines, or add park entrances.

FIGURE 13
HAWLEY PARK OVERVIEW

Park Features		
Acreage	2.4 Acres	
Ownership	City of East Cleveland	
Maintenance	City of East Cleveland	
Population in 1/2 Mile Walk Shed		
Children	701	19.2%
Young Adults	706	19.3%
Working Age	1,344	36.8%
Seniors	898	24.6%
Total Population	3,649	100%
Acres of Park per 1,000 Residents Served	0.7 Acres per 1,000 Residents	

HAWLEY PARK AMENITY OVERVIEW



FIGURE 14
HAWLEY PARK AMENITIES & FEATURES

	Amenity or Feature	Quantity
Recreational Elements	Basketball Courts	2 Courts
	Tennis Courts	-
	Baseball Fields	-
	Football/Soccer Fields	-
	Track	-
	Bleachers	-
	Fitness Stations	-
Site Features	Trash Cans	4 Cans
	Permanent Benches	9 Benches
	Grills	1 Grill
	Bike Racks	-
	Picnic Tables	2 Tables
	Playset/Swings	1 Playset
Infrastructure	Signage	1 Sign
	Trails/Sidewalks	Yes
	Parking Lots/Drives	Yes
	Fencing	Yes
Utilities	Walls	No
	Water Lines	-
	Drinking Fountain	-
	Fire Hydrant	-
	Light Poles	5 Poles
	Storm Lines	-
Buildings/ Structures	Sanitary Lines	-
	Pavilion/Picnic Shelter	2 Shelters
	Concession Stands	-
	Restrooms	-
	Performance Area	-

MLK CIVIC CENTER

The Martin Luther King, Jr. Civic Center is a Community Park and civic center located on the north side of Shaw Avenue on a plot of land covering 9.3 acres. The park and civic center are owned and operated by the City of East Cleveland.

The park serves an estimated population of 4,356 residents of East Cleveland within a 1/2 mile walk of park entrances, including 930 children. Of all parks in East Cleveland, the MLK Civic Center has the second highest number of residents living within a half-mile walk of the park. This is second only to Forest Hill Park, which is a significantly larger park than the MLK Civic Center.

HISTORY

The Martin Luther King, Jr. Civic Center is constructed on the site of the former Eadie Greenhouses. The site was acquired by the City of East Cleveland and the MLK Civic Center with its indoor/outdoor recreation center complex was built in the late 1970s. More recently, the Civic Center has undergone improvements through the dedication and volunteerism of residents. Approximately a half-million dollars were put in to the Civic Center in 2019, including the replacement of the indoor basketball court.

SITE FEATURES

The MLK Civic Center building has clear visibility from its main entrance along Shaw Avenue with a secondary entrance on Elm Avenue. The park is surrounded by homes on the north and west sides, and the Norfolk & Southern Railroad tracks on the east side. The location of the outdoor facilities in the rear of the Civic Center can make those amenities feel isolated.

The outdoor recreation facilities at the MLK Civic Center include a football/soccer field, an outdoor track, fitness stations, a playset, and picnic shelters. The majority of these recreation facilities require maintenance and updates. Additionally, the MLK Civic Center has indoor recreation amenities and associated parking facilities.

FIGURE 15
MLK CIVIC CENTER OVERVIEW

Park Features		
Acreage	9.3 Acres	
Ownership	City of East Cleveland	
Maintenance	City of East Cleveland	
Population in 1/2 Mile Walk Shed		
Children	930	21.4%
Young Adults	889	20.4%
Working Age	1,605	36.8%
Seniors	932	21.4%
Total Population	4,356	100%
Acres of Park per 1,000 Residents Served	2.1 Acres per 1,000 Residents	

MLK CIVIC CENTER AMENITY OVERVIEW

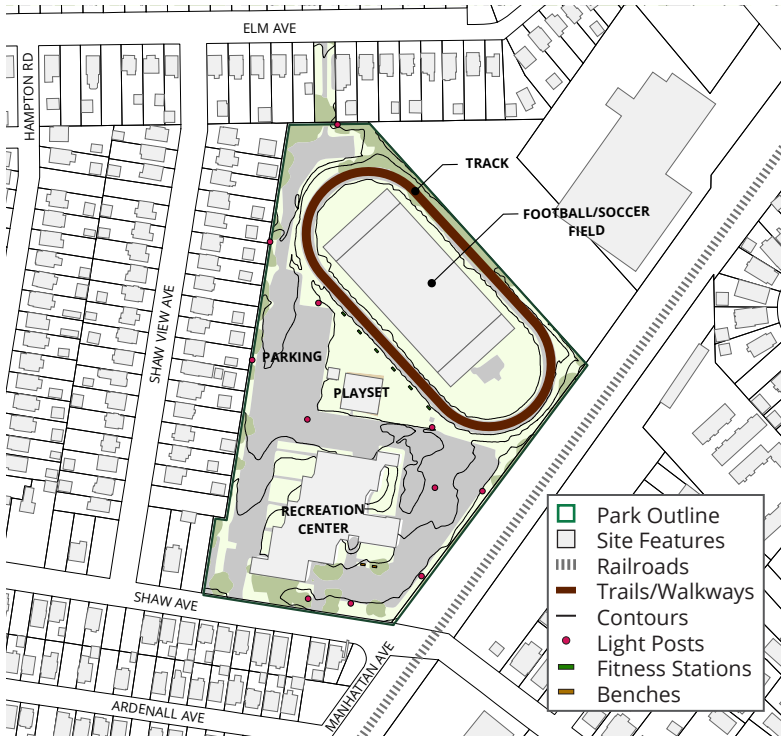
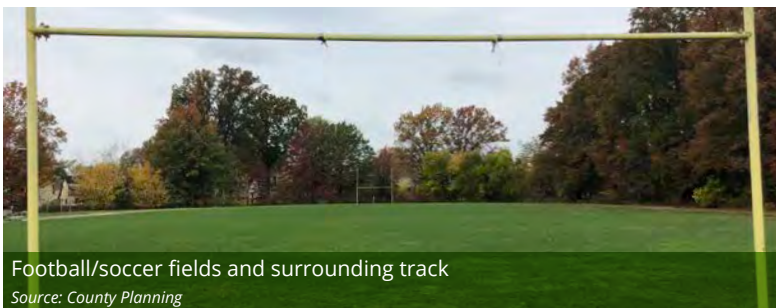


FIGURE 16
MLK CIVIC CENTER AMENITIES & FEATURES

	Amenity or Feature	Quantity	
Recreational Elements	Basketball Courts	-	
	Tennis Courts	-	
	Baseball Fields	-	
	Football/Soccer Fields	1 Field	
	Track	1 Track	
	Bleachers	3 Bleachers	
Site Features	Fitness Stations	6 Stations	
	Trash Cans	7 Cans	
	Permanent Benches	2 Benches	
	Grills	2 Grills	
	Bike Racks	1 Rack	
	Picnic Tables	4 Tables	
	Playset/Swings	1 Playset	
	Signage	1 Sign	
	Infrastructure	Trails/Sidewalks	Yes
		Parking Lots/Drives	Yes
Fencing		Yes	
Walls		Yes	
Utilities	Water Lines		
	Drinking Fountain	-	
	Fire Hydrant	1 Hydrant	
	Light Poles	11 Poles	
	Storm Lines		
Buildings/ Structures	Sanitary Lines		
	Pavilion/Picnic Shelter	1 Shelter	
	Concession Stands	-	
	Restrooms	-	
	Performance Area	-	



MANN AVENUE PARK

Mann Avenue Park is a Neighborhood Park located on the western border of the community and encompassing 1.1 acres of land. The park is owned and operated by the City of East Cleveland.

The park serves an estimated population of 1,707 residents of East Cleveland within a 1/2 mile walk of park entrances, including 297 children. Given the proximity to the City of Cleveland, the park may also serve some Cleveland residents.

HISTORY

The front half of Mann Avenue Park was originally platted for residential uses while the back half of the park was used as a railroad siding for the former Builders Supply & Fuel Company. By the 1970s, the land had been repurposed as a neighborhood park and ballfield.

SITE FEATURES

Mann Avenue Park is visible to neighboring streets; however, the park is located deep within a residential neighborhood and not visible to heavily trafficked streets. Additionally, surrounding neighborhoods have varying levels of vacancy, indicating fewer eyes on the park.

The park is laid out to include a baseball diamond and some additional site features such as picnic tables; however, both the baseball diamond and picnic tables are in poor condition and require significant maintenance.

Parcels immediately adjacent to Mann Avenue Park are vacant, with homes having been demolished recently. These vacant parcels provide opportunities for development or park expansion.

FIGURE 17
MANN AVENUE PARK OVERVIEW

Park Features		
Acreage	1.1 Acres	
Ownership	City of East Cleveland	
Maintenance	City of East Cleveland	

Population in 1/2 Mile Walk Shed		
Children	297	17.4%
Young Adults	405	23.7%
Working Age	600	35.1%
Seniors	405	23.7%
Total Population	1,707	100%
Acres of Park per 1,000 Residents Served	0.6 Acres per 1,000 Residents	

MANN AVENUE AMENITY OVERVIEW

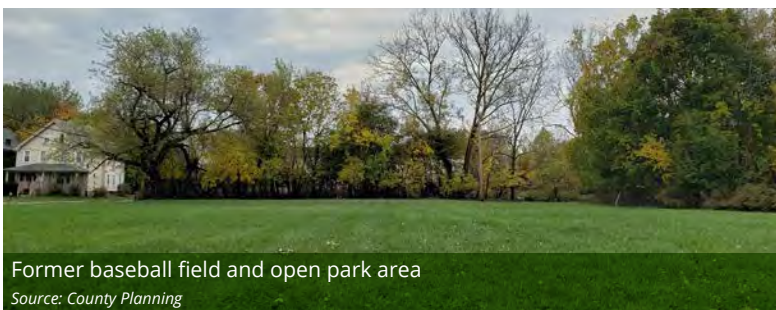


FIGURE 18
MANN AVENUE PARK AMENITIES & FEATURES

	Amenity or Feature	Quantity
Recreational Elements	Basketball Courts	-
	Tennis Courts	-
	Baseball Fields	1 Field
	Football/Soccer Fields	-
	Track	-
	Bleachers	-
Site Features	Fitness Stations	-
	Trash Cans	-
	Permanent Benches	-
	Grills	-
	Bike Racks	-
	Picnic Tables	2 Tables
Infrastructure	Playset/Swings	-
	Signage	-
	Trails/Sidewalks	No
	Parking Lots/Drives	No
Utilities	Fencing	Yes
	Walls	No
Buildings/ Structures	Water Lines	-
	Drinking Fountain	-
	Fire Hydrant	-
	Light Poles	1 Pole
	Storm Lines	-
	Sanitary Lines	-
Buildings/ Structures	Pavilion/Picnic Shelter	-
	Concession Stands	-
	Restrooms	-
	Performance Area	-



Former baseball field fencing
Source: County Planning



Former baseball field and open park area
Source: County Planning

REGIONAL PARKS ANALYSIS

East Clevelanders have access to parks beyond those within the boundaries of the City, including parks in neighboring Cleveland and Cleveland Heights. Residents can also use the regional network of parks and greenspaces throughout Northeast Ohio.

CLEVELAND PARKS & GREENSPACES

East Clevelanders live within close proximity of major Cleveland parks, especially the ribbon of parks, greenspaces, and recreation amenities running through the Glenville-James Hubbard Recreation Center and Cleveland's Forest Hills Park. These parks include outdoor recreation facilities, an indoor recreation center, and an outdoor pool.

In University Circle, East Clevelanders can access the cultural and park amenities surrounding Wade Oval, Wade Lagoon, and the Cultural Gardens, which provide formal park spaces and arts and cultural resources, such as the Cleveland Museum of Art.

Cleveland also has a number of smaller neighborhood parks within close proximity to East Cleveland, such as Endora Park and Moulton/Scoutway Park.

CLEVELAND HEIGHTS PARKS & GREENSPACES

East Clevelanders can also access parks in Cleveland Heights, especially the Cleveland Heights portions of Caledonia Park and Forest Hill Park. Cleveland Heights' Recreation Center is located within Forest Hill Park, but most programs are accessible only to Cleveland Heights residents or CH-UH School District students.

The ribbon of parks stretching from Forest Hill Park in East Cleveland continues through Cumberland and Cain Park in Cleveland Heights. These Cleveland Heights parks include pools, trails, and performing arts spaces.

REGIONAL PARKS

Beyond the immediate vicinity of East Cleveland, residents have access to regional park amenities including more than 23,700 acres of park space in the Cleveland Metroparks system and more than 33,000 acres in the Cuyahoga Valley National Park. While these parks are available to residents of East Cleveland, limited transportation options for getting to and from these regional parks may make them inaccessible, as many East Cleveland residents may be dependent on public transit and lack access to a vehicle. The nearest regional park to East Cleveland is Cleveland Metroparks Euclid Creek Reservation.



Wade Lagoon in Cleveland is part of a series of formal parks surrounding the Cleveland Museum of Art and other cultural institutions.

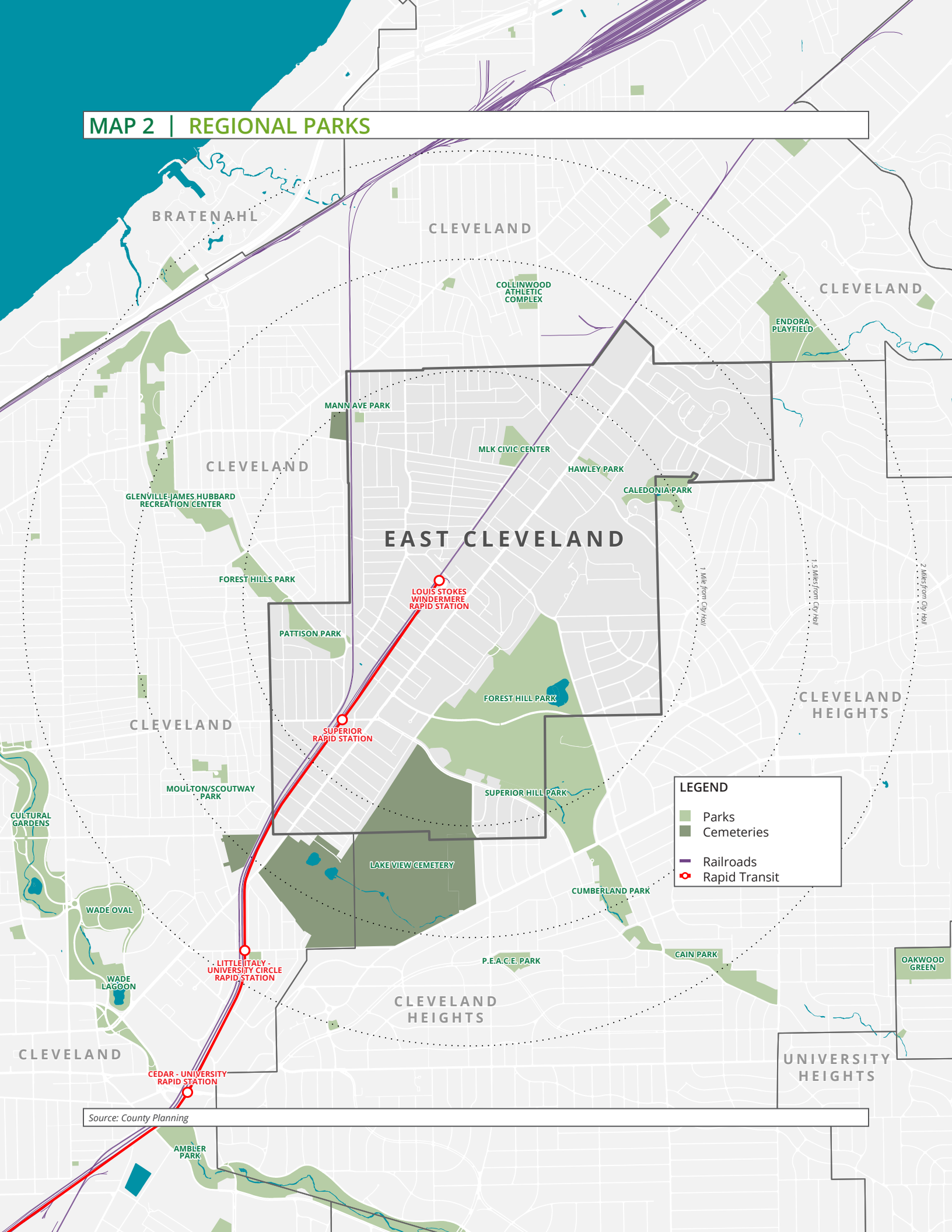
Source: Flickr user EDrost88



Cain Park in Cleveland Heights hosts an annual Arts Festival featuring arts, crafts, and performances.

Source: City of Cleveland Heights

MAP 2 | REGIONAL PARKS



LEGEND

- Parks
- Cemeteries
- Railroads
- Rapid Transit

Source: County Planning

PARK NEEDS ASSESSMENT

The assessment of park need shows the areas of East Cleveland that are located within a five and ten minute walk of a park. Locations outside a five or ten minute walk of an existing park may be good candidates for new park space.

METHODOLOGY

The Park Needs Assessment follows standards from the Trust for Public Land, which defines a ten minute walk as a half mile; however, the actual distance a person walks in ten minutes can vary depending on age and ability.

Mapping software calculated 1/4 and 1/2 mile walksheds from known park access points and measured the distance a person could walk along existing streets and paths. This takes into account that certain parks may be physically close to someone's home, but due to constraints such as railroads or lack of access due to gates, a person may not have access to the park.

PARK NEED

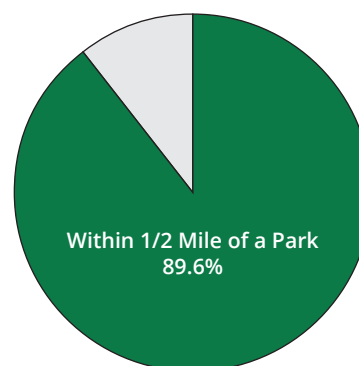
Map 3 on page 33 shows the physical location of parks in East Cleveland and certain parks in adjacent communities, as well as the five and ten minute walksheds to those parks. According to the data, 89.6% of the City's population lives within a ten minute walk of a park.

The analysis shows areas where park access is limited, including:

- Superior Rapid Station South: the neighborhoods bordering either side of the railroad tracks south of the Rapid Station
- Millionaire's Row: the neighborhood east of Euclid Avenue and south of Superior Avenue
- Hayden Avenue: the neighborhoods bordering Hayden Avenue and near the Mayfair School site
- Hazel/Oakhill: the eastern edge of the neighborhoods of Oakhill Road and Hazel Road

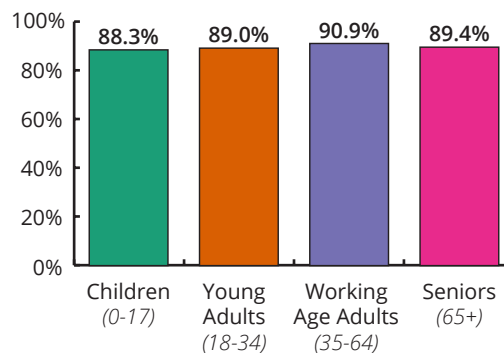
Importantly, the lack of a ten-minute walk to a park does not necessarily mean a new park is necessary. Certain areas of the community do not have easy access to a park, but might also have an extremely low population or might have access to other forms of open space that fill the role of a park. The analysis does not take into account certain open spaces that may fill park needs, especially the area along Hayden Road, which has access to a playground on the Mayfair School site and access to a walking trail around the Northeast Ohio Regional Sewer District (NEORS) Green Infrastructure site.

FIGURE 19
POPULATION LIVING WITHIN A TEN MINUTE WALK OF A PARK



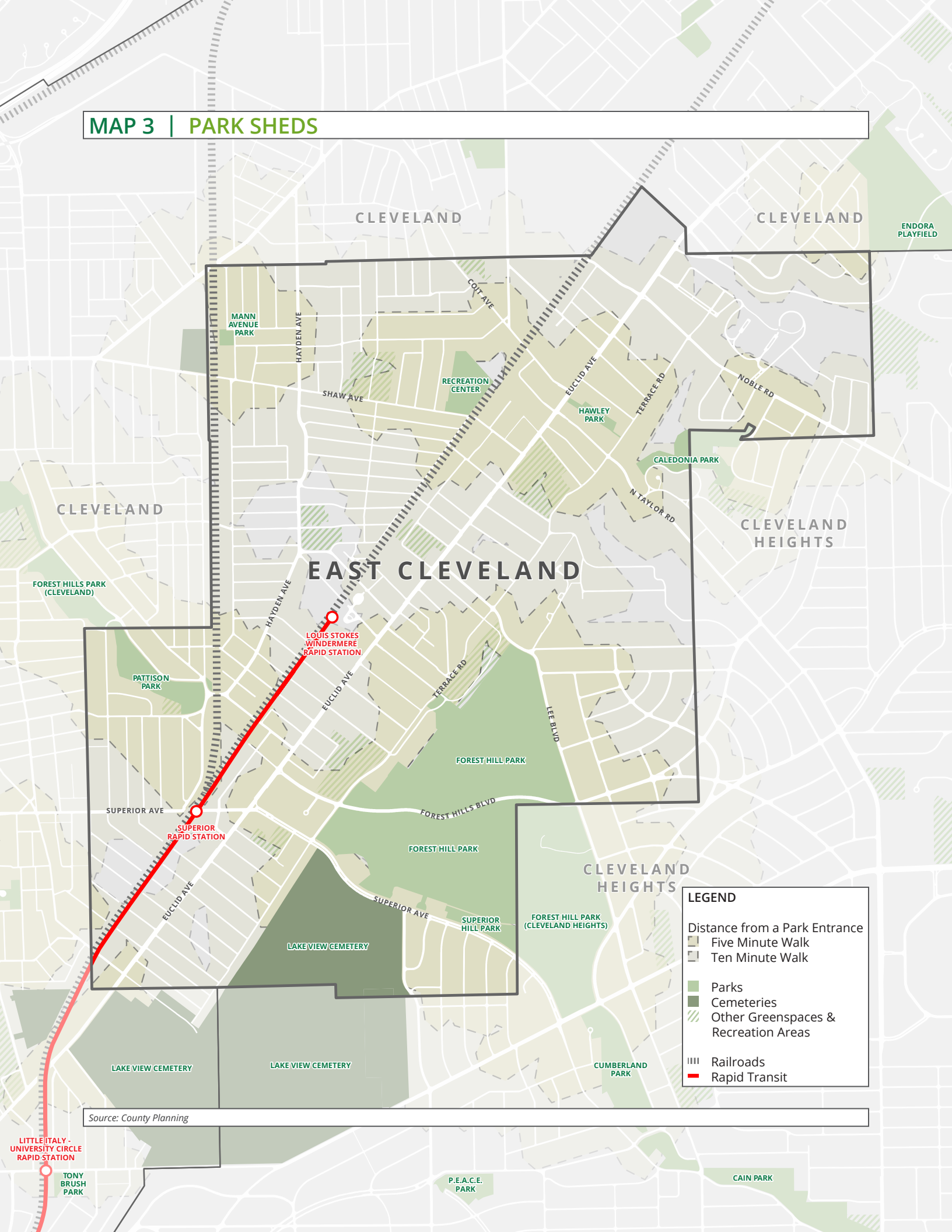
Source: County Planning

FIGURE 20
PERCENT OF AGE GROUPS LIVING WITHIN A TEN MINUTE WALK OF A PARK



Source: County Planning

MAP 3 | PARK SHEDS



LEGEND

- Distance from a Park Entrance
 - Five Minute Walk
 - Ten Minute Walk
- Parks
- Cemeteries
- Other Greenspaces & Recreation Areas
- Railroads
- Rapid Transit

Source: County Planning

LITTLE ITALY - UNIVERSITY CIRCLE RAPID STATION
TONY BRUSH PARK

ENDORA PLAYFIELD

EAST CLEVELAND

LOUIS STOKES WINDERMERE RAPID STATION

SUPERIOR RAPID STATION

SUPERIOR AVE

EUCLID AVE

LAKE VIEW CEMETERY

LAKE VIEW CEMETERY

FOREST HILL PARK

FOREST HILL PARK

FOREST HILL PARK

RECREATION CENTER

MANN AVENUE PARK

HAYDEN AVE

SHAW AVE

COIT AVE

EUCLID AVE

HAWLEY PARK

CALEDONIA PARK

TERRACE RD

NOBLE RD

N TAYLOR RD

CLEVELAND HEIGHTS

CLEVELAND HEIGHTS

FOREST HILL PARK (CLEVELAND HEIGHTS)

SUPERIOR HILL PARK

SUPERIOR AVE

FOREST HILL PARK

FOREST HILL PARK

FOREST HILL PARK

TERRACE RD

EUCLID AVE

HAYDEN AVE

LEE BLVD

CUMBERLAND PARK

P.E.A.C.E. PARK

CAIN PARK

CLEVELAND

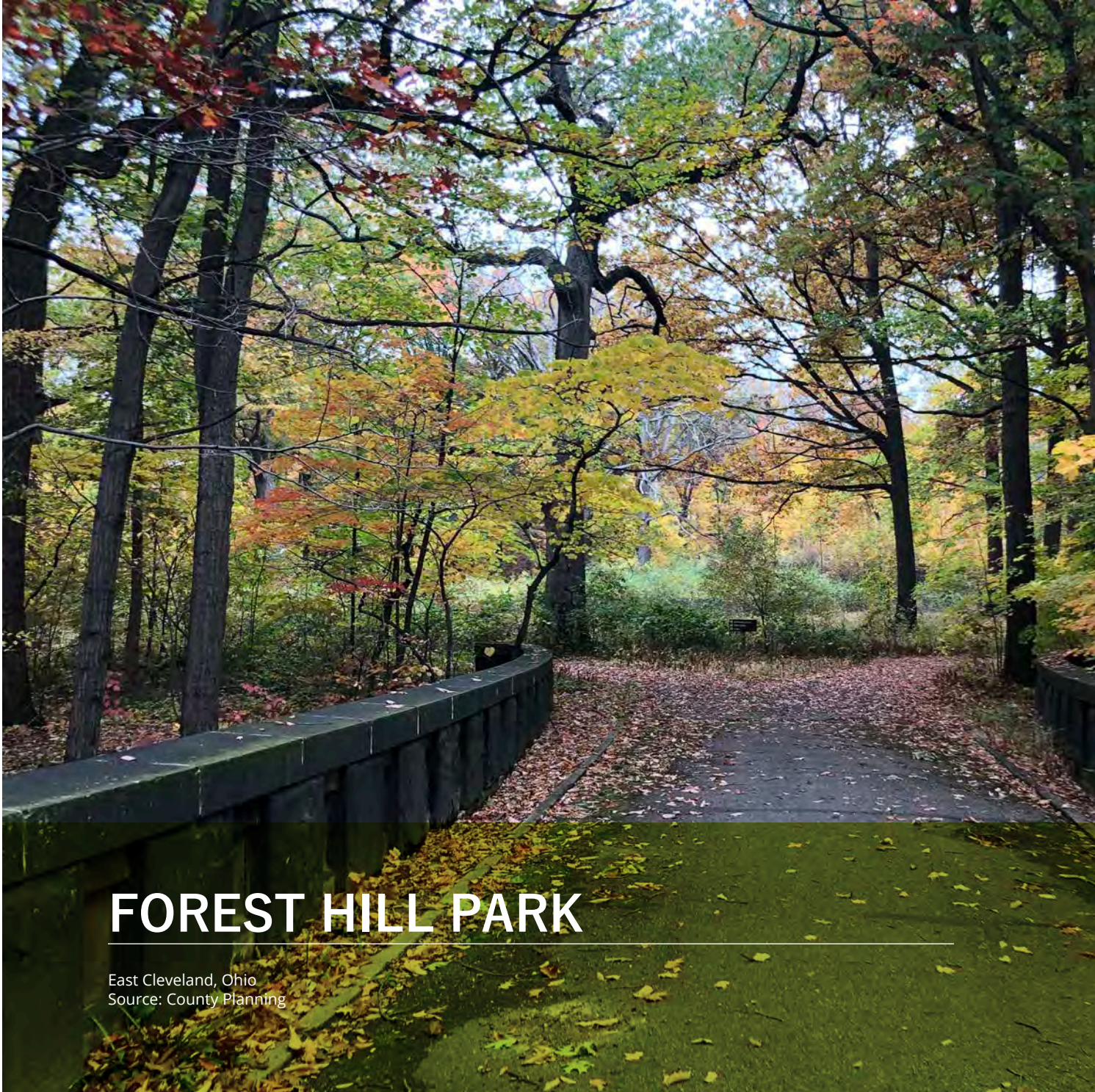
CLEVELAND

CLEVELAND

FOREST HILLS PARK (CLEVELAND)

PATTISON PARK

ENDORA PLAYFIELD



FOREST HILL PARK

East Cleveland, Ohio
Source: County Planning



SECTION 2

LAND USE PROFILE

This Section provides an overview of the use of land in the City of East Cleveland to better understand where people live, work, shop, and recreate. This is combined with an analysis of transportation issues to understand how people can get around the community. These analyses provide insight into how people can access the City's parks and greenspace system.

Included in this Section are the following analyses:

- Land Use Analysis, page 36
- Environmental Features Analysis, page 38
- Traffic Analysis, page 40
- Transit Analysis, page 42
- Bikeway Analysis, page 44
- Sidewalks Analysis, page 46

LAND USE ANALYSIS

Land use is a broad term describing how land within any given municipality is currently being utilized. Types of uses typically include broad categories such as industrial, residential, commercial, and open space. Understanding how land is used helps to determine how a community is laid out, what its major corridors are, where vacant land is located, and where community spaces are clustered.

CITYWIDE LAND USE

Map 4 displays land use in East Cleveland in 11 broad categories from residential to vacant land, and Figure 21 calculates the percent of total land acreage devoted to those uses. The land use categories were determined by the Cuyahoga County Auditor's tax information and updated with City data, aerial photography, and local assessment.

The map shows the general use of land in the City, with nearly 40% of the City's land used for residential purposes. Other uses such as commercial, office, industrial, and utilities are clustered along main thoroughfares, especially Euclid Avenue and secondarily Hayden Road, Superior Road, and Noble Road.

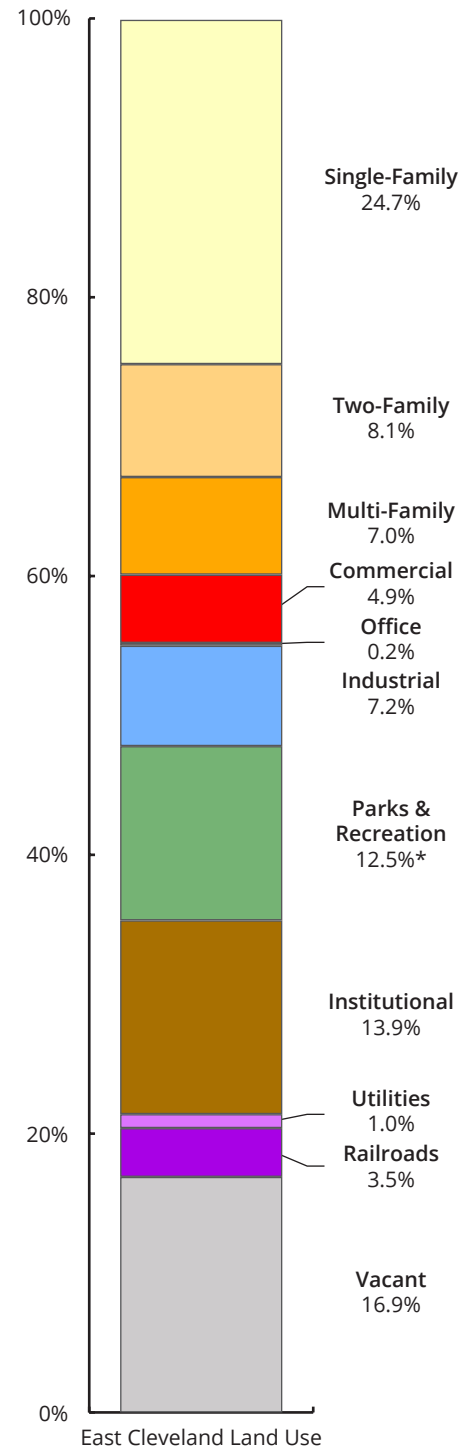
Large sections of the City are devoted to parks, recreation, and institutional uses. This is especially true along the ridge separating the flat area of East Cleveland bordering Cleveland and the heights bordering Cleveland Heights. This area is home to Forest Hill Park, Lake View Cemetery, McGregor Home, and Nela Park.

VACANT LAND

The map also displays vacant land in East Cleveland. Vacancy can be difficult to determine due to ongoing demolition and issues with identifying abandoned structures; however, the data shows that approximately 17% of the community consists of vacant land. The largest vacant area is the site of the former Huron Hospital; however, significant areas within neighborhoods are also vacant.

Vacant areas can provide opportunities for future development. While development pressure in East Cleveland is limited, strategic sites located near major assets may provide opportunities for new uses. As development pressure spills over from University Circle, opportunities for development may improve.

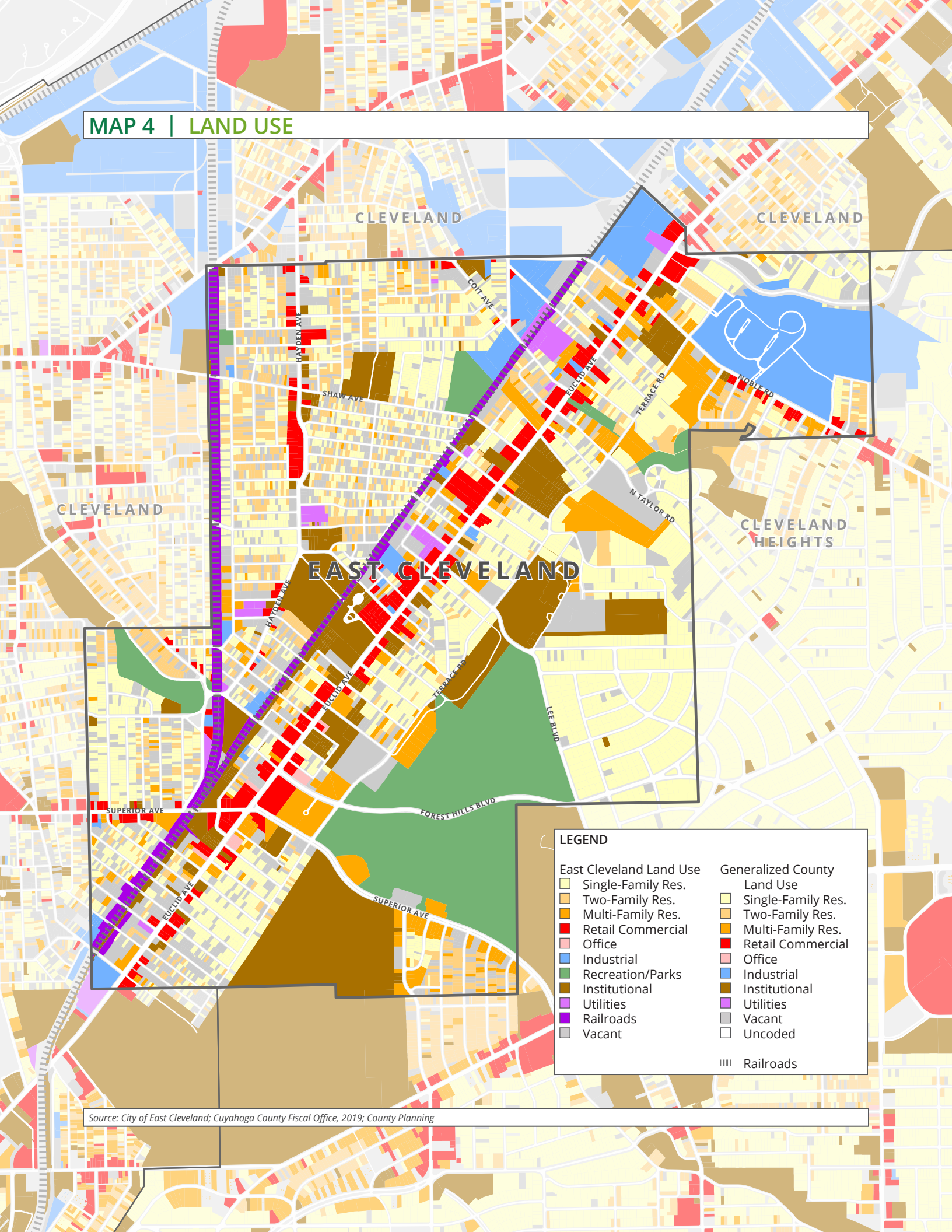
FIGURE 21
PERCENT LAND USE, EAST CLEVELAND



Source: County Planning

*The percent of land devoted to parks may differ elsewhere in the document due to differing data sources

MAP 4 | LAND USE



LEGEND

East Cleveland Land Use	Generalized County Land Use
Single-Family Res.	Single-Family Res.
Two-Family Res.	Two-Family Res.
Multi-Family Res.	Multi-Family Res.
Retail Commercial	Retail Commercial
Office	Office
Industrial	Industrial
Recreation/Parks	Institutional
Institutional	Utilities
Utilities	Vacant
Railroads	Uncoded
Vacant	
	Railroads

Source: City of East Cleveland; Cuyahoga County Fiscal Office, 2019; County Planning

ENVIRONMENTAL FEATURES ANALYSIS

Many of East Cleveland's historic waterways and natural areas have been built upon over time as housing, commercial, and industrial development has occurred. The City does retain a few environmental features such as streams, lakes, and steep hillsides, the majority of which are located in the City's park system. The map on page 39 showcases these environmental features.

WATERWAYS AND RIPARIAN ZONES

Waterways are rivers and streams running through a community, while riparian zones are vegetated lands alongside rivers, streams, wetlands, and shorelines that are susceptible to flooding. Riparian zones are important because they hold water during periods of heavy or continuous rain that might otherwise flood residential or developed areas.

The City of East Cleveland has very few remaining waterways and riparian zones. The largest of these is the Dugway Brook, which runs through the upper part of Forest Hill Park. The Ohio Department of Natural Resources also lists a Class I Dam located in the south central portion of Forest Hill Park, and the lake in Forest Hill Park is the largest waterbody in the community.

While there are few remaining waterways above ground, most historic streams were routed through culverts underground. The general path of these historic streams is shown on the map, and these routes were digitized by reviewing historic aerials; however, the streams were often moved when they were buried. The culverted portion of Dugway Brook running through East Cleveland generally passes underneath Pattison Park today.

TOPOGRAPHY

The topography of East Cleveland is defined by the steep hillside (known as the Portage Escarpment) running diagonally through the City where the flat Lake Plain landform rises to the foothills of the Allegheny Plateau, and where the City of East Cleveland rises into the "heights." These areas of land tend to be difficult to develop and can require filling, erosion control, and slope reinforcement. The majority of the Portage Escarpment in East Cleveland is protected land in the form of parks, cemeteries, and open spaces which take advantage of the impressive views and natural topography.



The Portage Escarpment running through Forest Hill Park provides commanding views of the region.

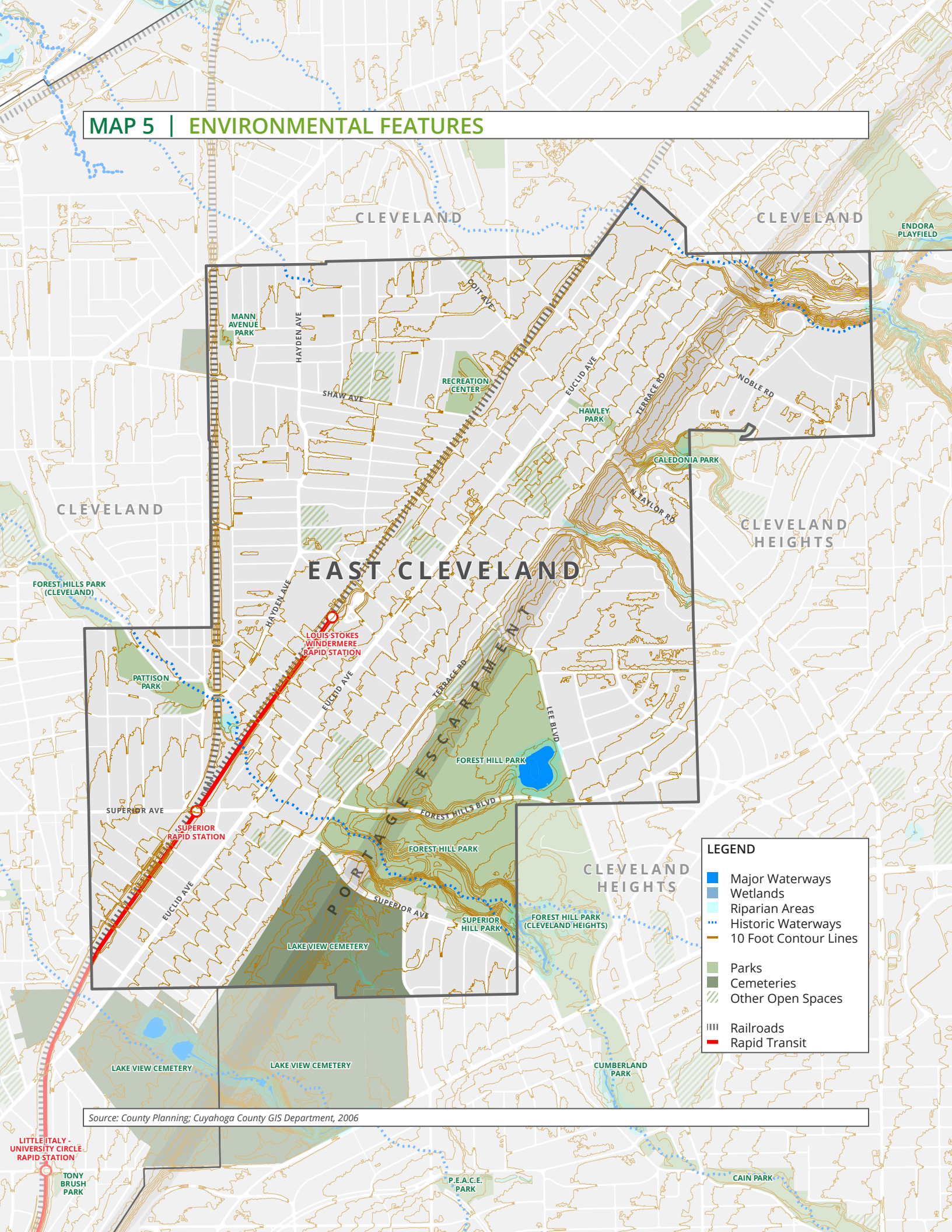
Source: County Planning



The lake in Forest Hill Park is one of the few remaining waterbodies in the City of East Cleveland.

Source: County Planning

MAP 5 | ENVIRONMENTAL FEATURES



TRAFFIC ANALYSIS

Traffic counts are helpful in understanding the need for future infrastructure improvements. Heavily traveled roads may require turn lanes, signal coordination, or even expansion to handle current and future vehicular traffic, whereas large roads with low traffic counts are candidates for "road diets." Road diets are infrastructure changes that reduce the number of travel lanes to make room for other improvements such as landscaping, bikeways, or bus lanes.

The traffic counts listed in Figure 22 and displayed on Map 6 were collected by the Ohio Department of Transportation and NOACA between 2012 and 2017. In cases where a street had multiple traffic counts, the highest count is shown. Figure 22 also contains current data on the number of lanes and approximate pavement width for those roads with traffic counts.

Many streets in East Cleveland were built for a time when the City had a significantly higher population, and a majority of commuters used surface streets. Today, the lower population and regional highway network mean that many roads in East Cleveland are candidates for road diets. Only one road in the City, Euclid Avenue, handles more than 20,000 cars per day, and with extremely wide lane widths, even Euclid Avenue has the potential for a reconfiguration.

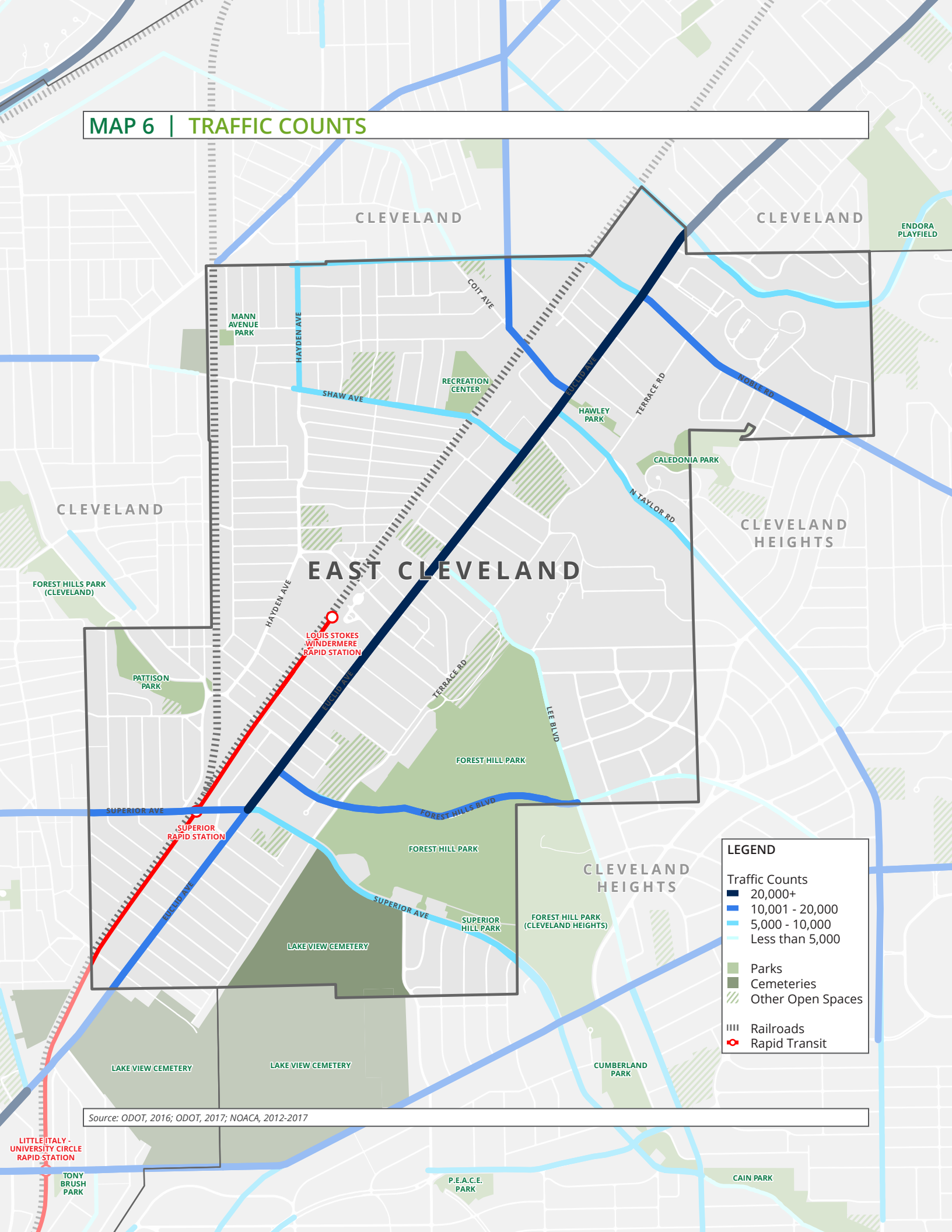
The potential for road diets means the City could better use its road network to connect people to parks and other destinations via bike, transit, or on foot. The counts provide insights on the demands placed on the road; however, more recent traffic counts would be needed before major improvements are made.

FIGURE 22
TRAFFIC ANALYSIS

Road Segment	Traffic Count (AADT)	Travel Lanes	Turn Lanes	Parking Lanes	Approx. Pavement Width	Road Diet Potential
Euclid Ave (Cleveland to Superior Ave)	10,001-20,000	4	1	0	68 ft	✓
Euclid Ave (Superior Ave to Cleveland)	20,000+	4	1	0	69 ft	✓
Superior Ave (Cleveland to Euclid Ave)	10,001-20,000	4	0	0	45 ft	✓
Superior Ave (Euclid Ave to Cleveland Heights)	5,001-10,000	4	1	2	72 ft	✓
Forest Hills Blvd (Euclid Ave to Lee Blvd)	10,001-20,000	4	0	0	50 ft	✓
Forest Hills Blvd (Lee Blvd to Cleveland Heights)	Less than 5,000	4	0	0	50 ft	✓
Lee Blvd (Euclid Ave to Cleveland Heights)	Less than 5,000	4	0	0	40 ft	✓
Shaw Ave (Hayden Ave to Euclid Ave)	5,001-10,000	2	0	0	28 ft	
Hayden Ave (Shaw Ave to Woodworth Ave)	5,001-10,000	4	0	0	48 ft	✓
Woodworth Ave (Hayden Ave to Euclid Ave)	5,001-10,000	2	0	0	28 ft	
Taylor Rd (Euclid Ave to Cleveland Heights)	5,001-10,000	4	0	0	40 ft	✓
Noble Rd (Euclid Ave to Cleveland Heights)	10,001-20,000	4	0	0	50 ft	✓
Coit Ave - E 152 St (Euclid Ave to Cleveland)	10,001-20,000	2	0	0	36 ft	✓
Belvoir Blvd (Cleveland to Cleveland Heights)	10,001-20,000	2	0	0	26 ft	

Source: County Planning; ODOT, 2016; ODOT, 2017; NOACA, 2012-2017

MAP 6 | TRAFFIC COUNTS



LEGEND

Traffic Counts

- 20,000+
- 10,001 - 20,000
- 5,000 - 10,000
- Less than 5,000

■ Parks
 ■ Cemeteries
 ■ Other Open Spaces

▬ Railroads
 ○ Rapid Transit

Source: ODOT, 2016; ODOT, 2017; NOACA, 2012-2017

LITTLE ITALY - UNIVERSITY CIRCLE RAPID STATION
 TONY BRUSH PARK

ENDORA PLAYFIELD

FOREST HILLS PARK (CLEVELAND)

PATTISON PARK

SUPERIOR AVE
 SUPERIOR RAPID STATION

LAKE VIEW CEMETERY

LAKE VIEW CEMETERY

P.E.A.C.E. PARK

CAIN PARK

CLEVELAND

CLEVELAND

CLEVELAND

EAST CLEVELAND

CLEVELAND HEIGHTS

CLEVELAND HEIGHTS

FOREST HILL PARK (CLEVELAND HEIGHTS)

CUMBERLAND PARK

RECREATION CENTER

HAWLEY PARK

CALEDONIA PARK

FOREST HILL PARK

FOREST HILL PARK

SUPERIOR HILL PARK

LAKE VIEW CEMETERY

HAYDEN AVE

SHAW AVE

COIT AVE

EUCLID AVE

TERRACE RD

SUPERIOR AVE

SUPERIOR AVE

FOREST HILLS BLVD

LEE BLVD

TERRACE RD

N TAYLOR RD

NOBLE RD

TRANSIT ANALYSIS

Public transit is a critical lifeline for those without access to a personal vehicle. It provides ways of reaching services, getting to work, and moving about the community. Quality transit access has also become increasingly sought after by those looking to drive less and to get around in a more environmentally friendly manner.

East Cleveland has incredible transit access from the Greater Cleveland Regional Transit Authority (GCRTA) as displayed on Map 7. The City hosts two Red Line Rapid Transit stations: the Superior Rapid Station and the Louis Stokes Windermere Rapid Station. These two stations provide access to the region's high-capacity rail transit network with direct connections to University Circle, Downtown Cleveland, Ohio City, Cleveland Hopkins International Airport, and areas in between.

Euclid Avenue is the route of the HealthLine, one of only two silver-rated Bus Rapid Transit lines in the United States, according to the Institute for Transportation & Development Policy. It provides fast, frequent bus service to University Circle and Downtown Cleveland that aims to match the reliability, speed, and comfort of rail transit. Operating on dedicated bus lanes in Cleveland, the East Cleveland portion of the HealthLine operates in mixed traffic on Euclid Avenue.

The Louis Stokes Windermere Rapid Station is also a major bus hub that provides access to seven bus routes that radiate out to many parts of the County. Most parts of the East Cleveland community have access to a bus route within a 1/4 to a 1/2 mile walk of their home and all parks in East Cleveland have at least one bus stop within a 1/4 mile walk of a park entrance.

VEHICLE OWNERSHIP

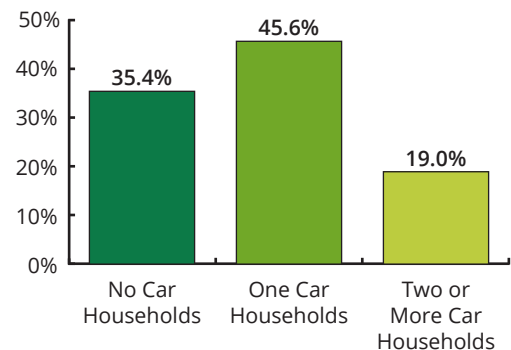
Those without vehicles are particularly reliant on transit access to move around their community and access services. In East Cleveland, more than a third of all households do not have access to a vehicle, and an additional 45.6% of households only have access to a single vehicle, as shown in Figure 23. This level of vehicle ownership is significantly lower than Countywide ownership, indicating an even greater reliance on transit in East Cleveland.



The RTA Red Line Rapid Transit provides fast, frequent service to and from East Cleveland.

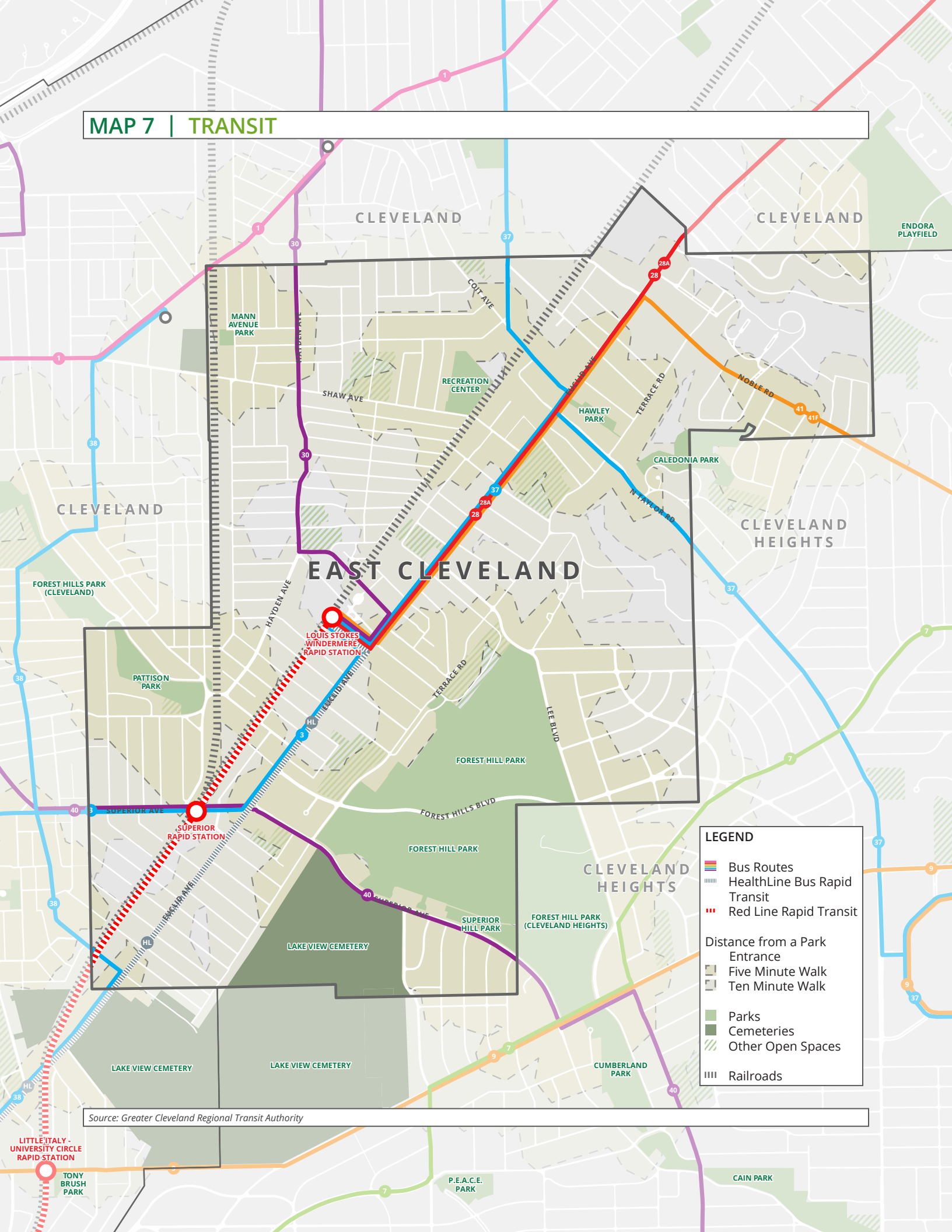
Source: Flickr user Paul Sableman

FIGURE 23
CARS PER HOUSEHOLD, EAST CLEVELAND



Source: U.S. Census Bureau, 2018 5-Year American Community Survey, B25044

MAP 7 | TRANSIT



LEGEND

- Bus Routes
- HealthLine Bus Rapid Transit
- Red Line Rapid Transit

Distance from a Park Entrance

- Five Minute Walk
- Ten Minute Walk

- Parks
- Cemeteries
- Other Open Spaces
- Railroads

Source: Greater Cleveland Regional Transit Authority

LITTLE ITALY - UNIVERSITY CIRCLE RAPID STATION
TONY BRUSH PARK

BIKEWAY ANALYSIS

Bikeways have become increasingly important as people seek to travel in ways that are safe, environmentally friendly, and healthy. Bikeways can take many forms including markings and signage to share roads, bike lanes, or off-road paths.

CUYAHOGA GREENWAYS

The Cuyahoga Greenways study is a joint effort between County Planning, Cleveland Metroparks, and NOACA to build an interconnected system of greenways and trails that link neighborhoods, parks, jobs, and public transportation to create a comprehensive countywide active transportation network. The Greenways Framework Plan outlines a series of regionally important trails, gaps in that network, and priorities for new trail and bikeway construction to complete this network.

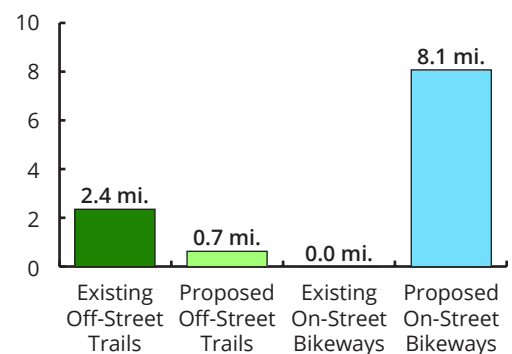
Map 8 on page 45 shows bikeways in five colors representing existing and proposed bikeways. Green lines represent existing and proposed off-street trails, such as those that run through Forest Hill Park, that were identified as part of the Cuyahoga Greenways planning process. Blue lines represent existing and proposed on-street bikeways, such as bike lanes, that were also identified in the Cuyahoga Greenways study. Orange lines represent additional bikeways that were built by local communities.

EXISTING AND PROPOSED BIKEWAYS

Figure 24 shows the length of existing and proposed trails and bikeways in East Cleveland. In total, East Cleveland has 2.4 miles of existing trails and bikeways through the City. All existing trails run through Forest Hill Park and connect further into Cleveland Heights. This trail network fits into the larger network of proposed Cuyahoga Greenways that run further north and south.

The City of East Cleveland does not have any existing on-street bikeways; however, the Cuyahoga Greenways Plan identified proposed trails and bikeways that would fit into the regional network. Proposed bikeways include bike lanes along Euclid Avenue, Noble Road, Superior Road, Forest Hills Boulevard, and along Pattison Park.

FIGURE 24
MILES OF EXISTING AND PROPOSED TRAILS AND BIKEWAYS, EAST CLEVELAND



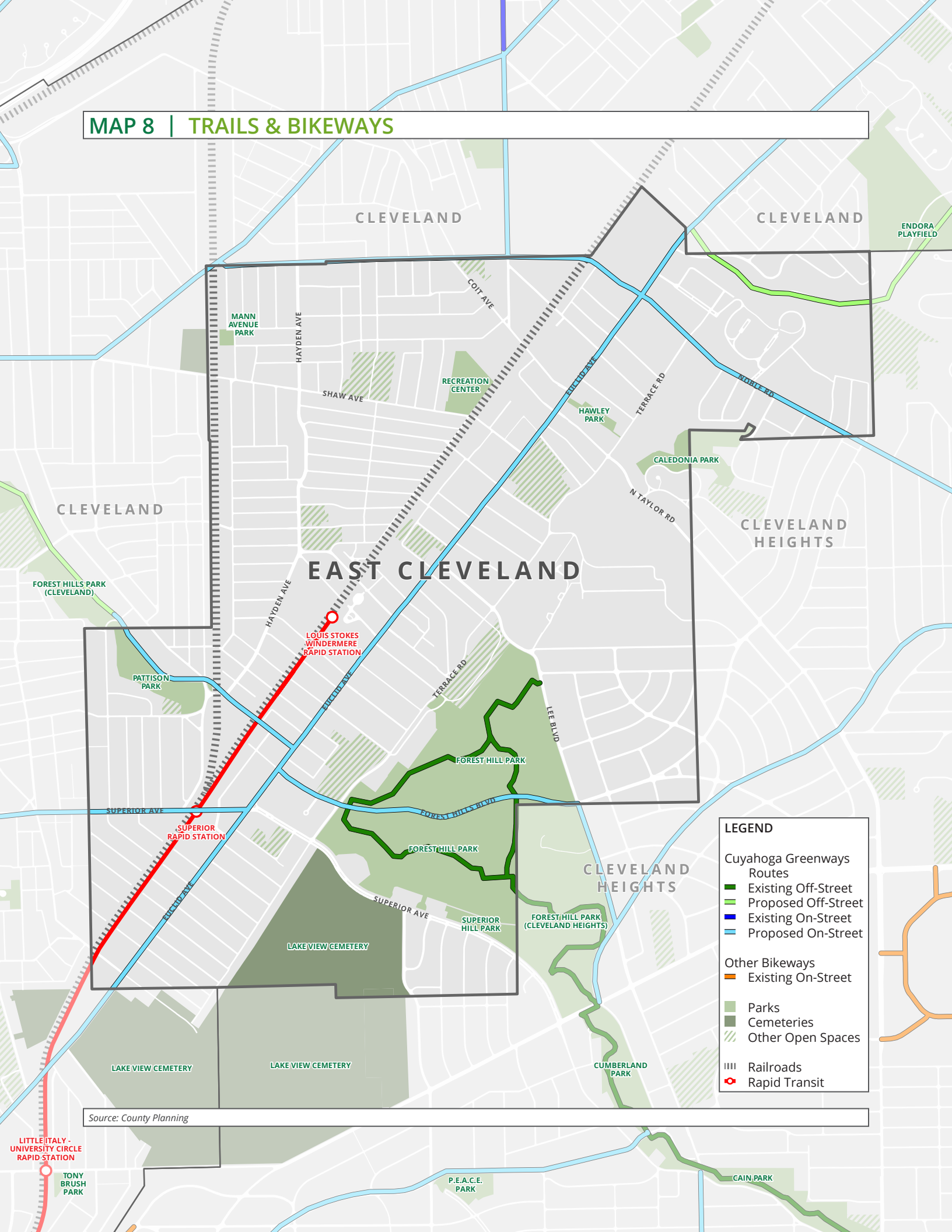
Source: County Planning



Trails through Forest Hill Park connect East Cleveland to Cleveland Heights and the regional trail network

Source: County Planning

MAP 8 | TRAILS & BIKEWAYS



LEGEND

- Cuyahoga Greenways Routes
 - Existing Off-Street (dark green line)
 - Proposed Off-Street (light green line)
 - Existing On-Street (blue line)
 - Proposed On-Street (light blue line)
- Other Bikeways
 - Existing On-Street (orange line)
- Parks (solid green area)
- Cemeteries (darker green area)
- Other Open Spaces (hatched green area)
- Railroads (dashed black line)
- Rapid Transit (red line with circle icon)

Source: County Planning

LITTLE ITALY - UNIVERSITY CIRCLE RAPID STATION
TONY BRUSH PARK

ENDORA PLAYFIELD

FOREST HILLS PARK (CLEVELAND)

PATTISON PARK

SUPERIOR RAPID STATION

LOUIS STOKES WINDERMERE RAPID STATION

RECREATION CENTER

CLEVELAND HEIGHTS

LEE BLVD

FOREST HILL PARK

FORESTHILL PARK

SUPERIOR HILL PARK

FORESTHILL PARK (CLEVELAND HEIGHTS)

LAKE VIEW CEMETERY

LAKE VIEW CEMETERY

LAKE VIEW CEMETERY

CUMBERLAND PARK

P.E.A.C.E. PARK

CAIN PARK

CLEVELAND

CLEVELAND

CLEVELAND

EAST CLEVELAND

CLEVELAND HEIGHTS

MANN AVENUE PARK

HAYDEN AVE

SHAW AVE

COIT AVE

HAWLEY PARK

TERRACE RD

CALEDONIA PARK

N TAYLOR RD

HAYDEN AVE

SHAW AVE

TERRACE RD

SUPERIOR AVE

SUPERIOR AVE

SUPERIOR AVE

SHAW AVE

SUPERIOR AVE

CLEVELAND HEIGHTS

LAKE VIEW CEMETERY

LAKE VIEW CEMETERY

LAKE VIEW CEMETERY

CUMBERLAND PARK

P.E.A.C.E. PARK

CAIN PARK

CLEVELAND

CLEVELAND

CLEVELAND

EAST CLEVELAND

CLEVELAND HEIGHTS

MANN AVENUE PARK

HAYDEN AVE

SHAW AVE

COIT AVE

HAWLEY PARK

TERRACE RD

CALEDONIA PARK

N TAYLOR RD

HAYDEN AVE

SHAW AVE

TERRACE RD

SUPERIOR AVE

SUPERIOR AVE

SUPERIOR AVE

SHAW AVE

SUPERIOR AVE

CLEVELAND HEIGHTS

LAKE VIEW CEMETERY

LAKE VIEW CEMETERY

LAKE VIEW CEMETERY

CUMBERLAND PARK

P.E.A.C.E. PARK

CAIN PARK

SIDEWALKS ANALYSIS

Sidewalks increase mobility by connecting residents to services, schools, and parks. They also provide a safe way for people on foot to move throughout the community and are an essential part of the transportation system for those who walk or use transit.

SIDEWALKS

East Cleveland has an incredibly strong sidewalk network with sidewalks built along the vast majority of City streets. County Planning used aerial imagery, street view, and fly-over technology to document the existing sidewalk network. Figure 25 and Map 9 show the results of this analysis.

The vast majority of streets (83.1%) in East Cleveland have sidewalks on both sides of the street. An additional 16.1% of streets have sidewalks on only one side, and less than 1% do not have sidewalks. Some of the most notable areas of missing sidewalks include Forest Hills Boulevard, Thornhill Drive, Terrace Road, and parts of Lee Boulevard.

In the case of East Cleveland, many sidewalks once existed on City streets but have been heavily damaged over time. Those sidewalks that were determined to be severely damaged and unusable were listed as missing.

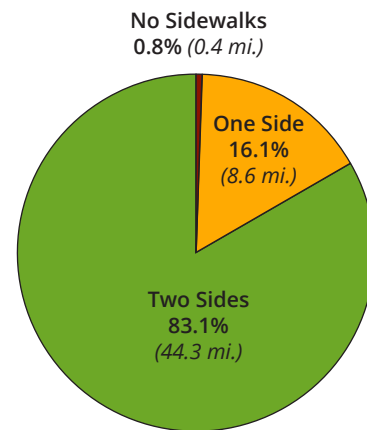
WALKABILITY

Sidewalks are essential to a walkable community, and walkable communities are in high demand. Several factors determine community walkability including the presence of sidewalks; connections to shopping, schools, parks, trails, and other local amenities; and an inviting and friendly environment with low volume traffic and low travel speeds.

Walk Score is a popular online tool to quickly assess a community's walkability. The tool analyzes population density, block length, intersection density, and distance to amenities to calculate the ability of residents to move around the City or run daily errands without a car. According to Walk Score, East Cleveland has an overall walkability score of 59, ranking it as "Somewhat Walkable."

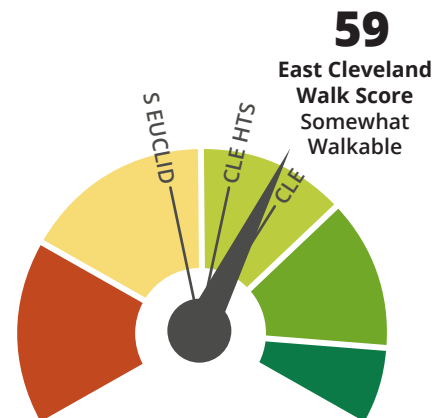
In comparing East Cleveland to adjacent communities, the City has a higher Walk Score than any other suburban municipality and roughly equal to the City of Cleveland.

FIGURE 25
MILES OF SIDEWALKS, EAST CLEVELAND



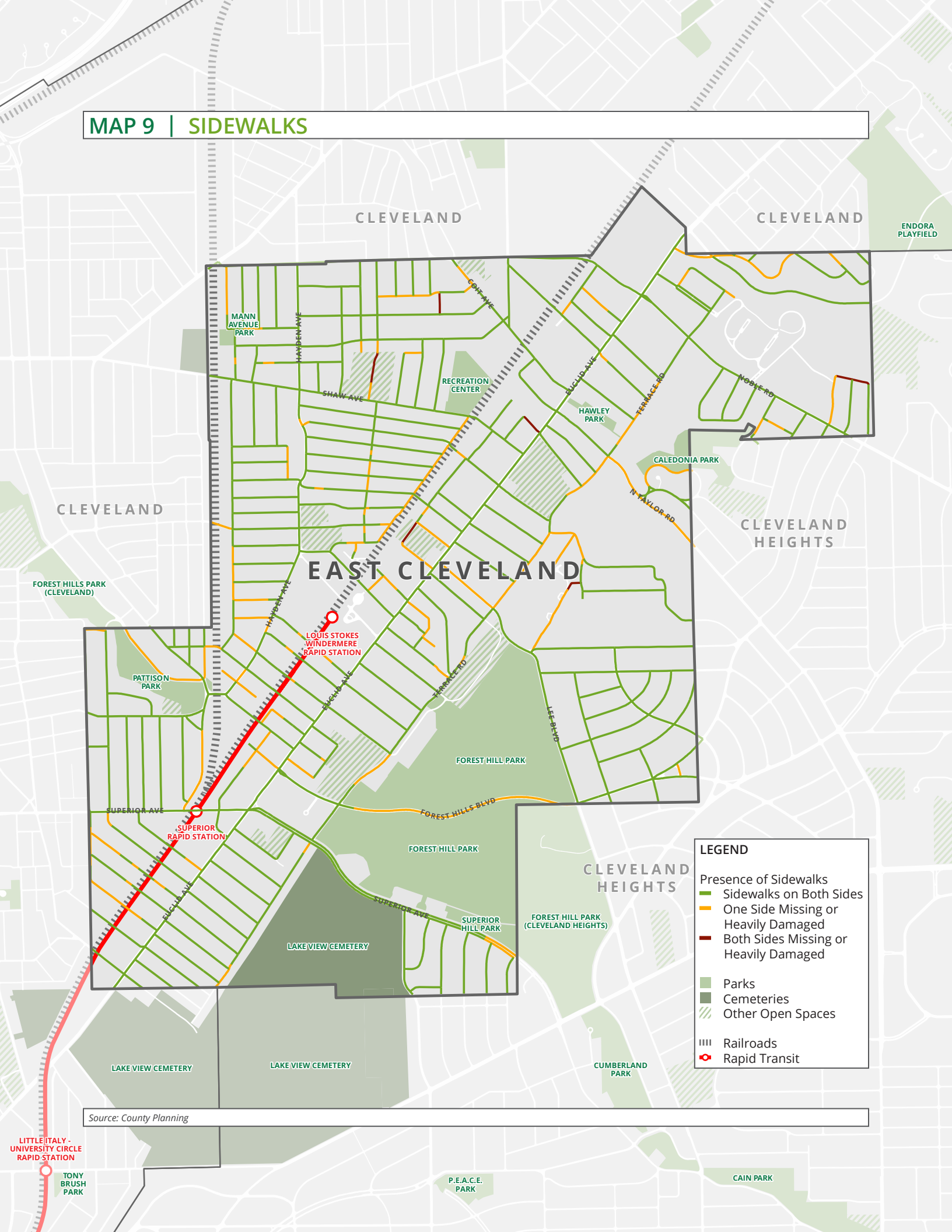
Source: County Planning

FIGURE 26
WALK SCORE, EAST CLEVELAND



Source: www.WalkScore.com

MAP 9 | SIDEWALKS



LEGEND

- Presence of Sidewalks
 - Green line: Sidewalks on Both Sides
 - Orange line: One Side Missing or Heavily Damaged
 - Red line: Both Sides Missing or Heavily Damaged
- Parks (Green area)
- Cemeteries (Dark Green area)
- Other Open Spaces (Hatched area)
- Railroads (Hatched line)
- Rapid Transit (Red line with circle)

Source: County Planning

LITTLE ITALY - UNIVERSITY CIRCLE RAPID STATION
TONY BRUSH PARK



MLK CIVIC CENTER

East Cleveland, Ohio
Source: County Planning



SECTION 3

DEMOGRAPHIC PROFILE

This Section provides an overview of the demographics of residents living in East Cleveland and how these demographics have changed over time. This includes the ages of residents and where groups such as children and seniors live. This can assist in targeting park and greenspace amenities to the age groups living in close proximity to the parks.

Included in this Section are the following analyses:

- Demographic Analysis, page 50

DEMOGRAPHIC ANALYSIS

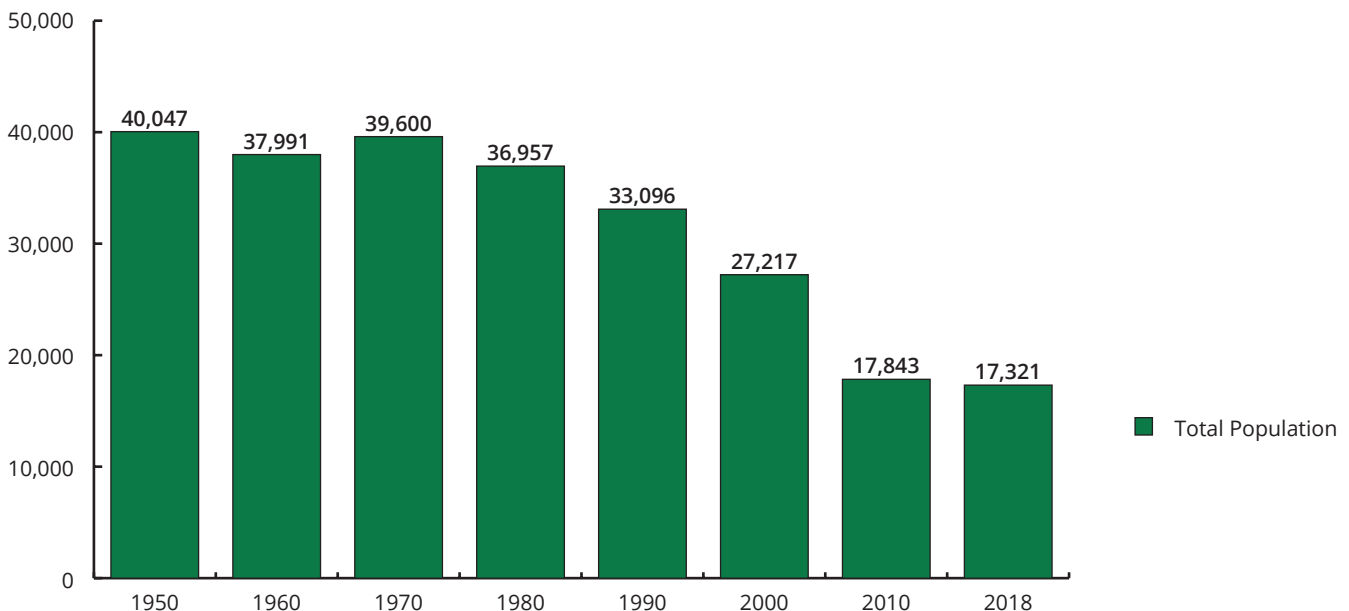
Documenting demographic groups and ages of population in East Cleveland is critical in understanding who will be using the City's parks and recreation services and amenities. The most accurate population data available to East Cleveland comes from the U.S. Census Bureau's decennial census data as well as more up-to-date data from the annual American Community Survey.

While the population in 2010 is less than half of what it was in 1970, the most recent American Community Survey data shows encouraging signs. Between 2010 and 2018, the City's population is estimated to have dropped by a little over 500 people, compared to an almost 10 thousand person drop between 2000 and 2010. This stability is an important factor in crafting a new narrative for East Cleveland.

TOTAL POPULATION

Population size and growth trends help to better understand the user group in East Cleveland. The City's population trends from 1950 to 2018 show the relatively stable population between 1950 and 1970 before large population losses from 1970 to 2010. Many factors influenced the growth trends in the City, including suburbanization, white flight, and regional economic difficulties.

FIGURE 27
TOTAL POPULATION, EAST CLEVELAND, 1950-2018



Source: IPUMS NHGIS, University of Minnesota, www.nhgis.org; Ohio Development Services Agency; U.S. Census Bureau, 2014-2018 American Community Survey, B01001

AGE GROUPS

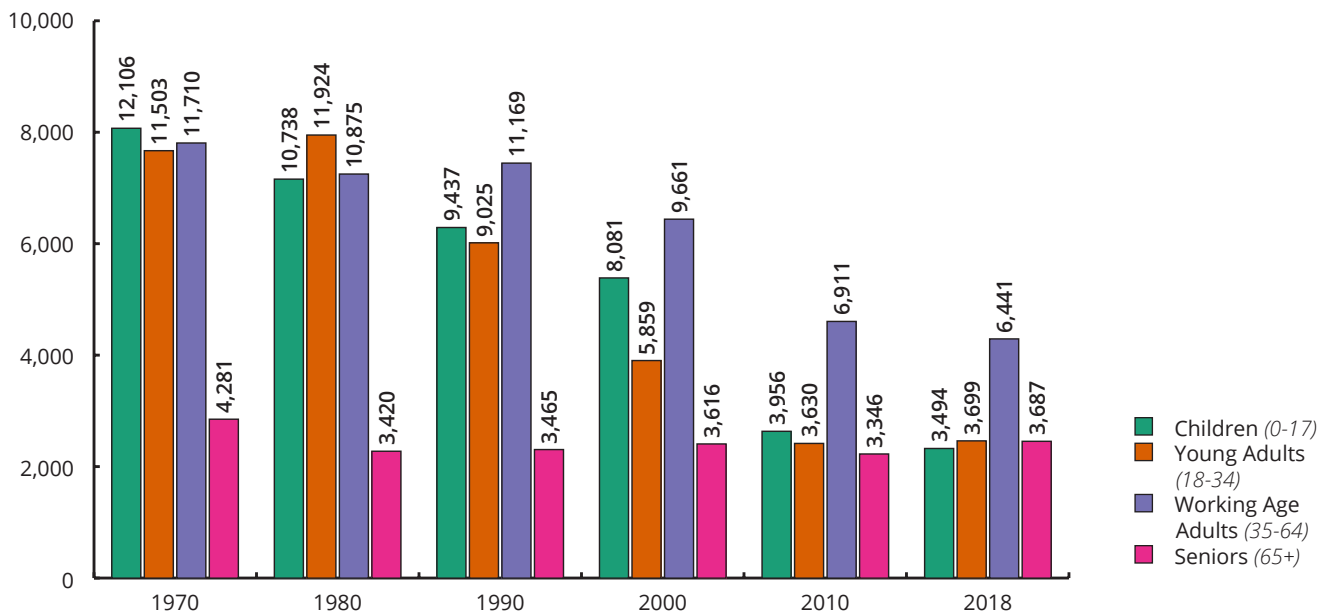
The ages of residents in East Cleveland directly affect the facilities, amenities, and layout of the City's park system as parks generally serve the local community.

Figure 28 shows the age of residents living in East Cleveland grouped into four ranges. The ranges shown below are Children (0-17), Young Adults (18-34), Working Age Adults (35-64), and Seniors (65+). East Cleveland has a relatively consistent population, with most age groups spread equally. Children make up 20% of the population, Young Adults make up 21%, Working Age Adults make up 37%, and Seniors make up the remaining 21%.

While East Cleveland's population has shrunk from 1970 to 2018, its composition has also changed dramatically. Children, Young Adults, and Working Age Adults made up significantly larger portions of the community in previous decades, but their numbers have decreased significantly. In 1970, these three age groups comprised a

combined 89% of the community. In 2018, these three age groups comprised only 79% of the community. On the other hand, the Senior population has remained relatively stable through the decades, with very little change in the total population of Seniors. This has increased seniors as a share of the total population from 11% in 1970 to 21% in 2018.

FIGURE 28
POPULATION BY AGE GROUP, EAST CLEVELAND, 1970-2018



Source: IPUMS NHGIS, University of Minnesota, www.nhgis.org; U.S. Census Bureau, 2014-2018 American Community Survey, B01001

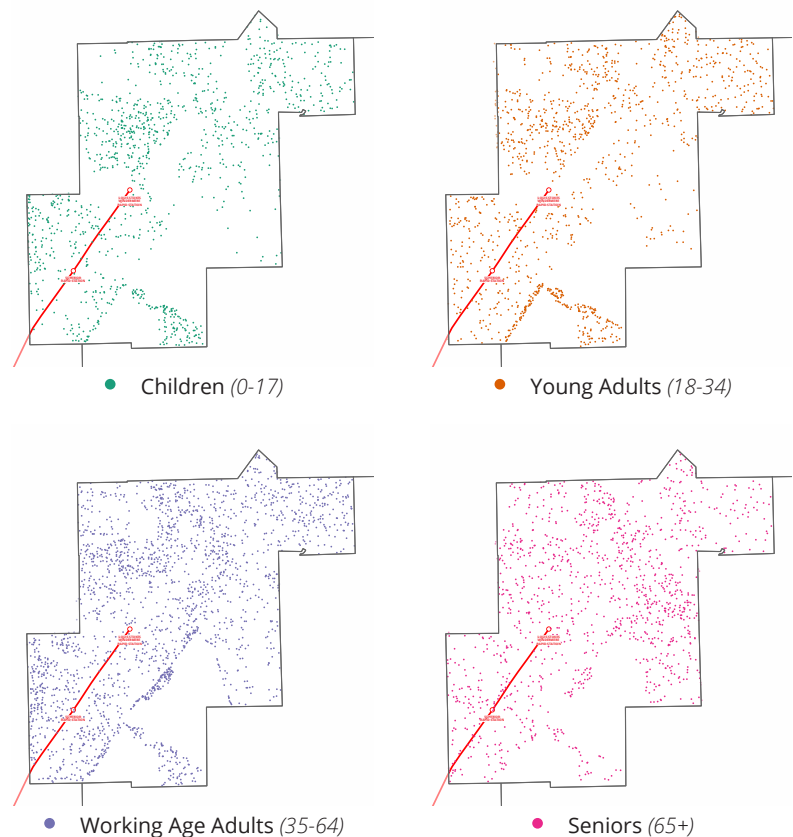
POPULATION DENSITY BY AGE GROUP

Population density is a measure of population per square mile and when mapped, it can generally display how concentrated or dispersed the population is within a specific area or region. Densely populated areas can more easily support amenities such as restaurants and retail, and sometimes can have different needs such as greater transit frequencies, open space, or biking accommodations. Figure 29 and Map 10 show the density of population within East Cleveland by age group, with one dot representing three people and the color of the dot representing an age group. Areas of open spaces such as parks, cemeteries, and large vacant areas have been removed from the analysis to more accurately reflect the density of residential areas in East Cleveland.

As a whole, East Cleveland is made up of 3.09 square miles of land area and 17,321 residents, yielding a citywide density of 5,606 persons per square mile. The densest parts of the community include the neighborhoods around the MLK Civic Center, around Pattison Park, and adjacent to Forest Hill Park. While there are not huge concentrations by age group, there are some areas within East Cleveland that have a greater number of Children and Young Adults than other areas. These include the Coventry Road area south of Forest Hill Park and the area south of the MLK Civic Center on either side of Hayden Road.

The density map also shows that the most densely concentrated part of the community—south of the MLK Civic Center on either side of Hayden Road—does not have significant park space. This may be an area in which new parks and greenspaces are necessary.

FIGURE 29
POPULATION DENSITY BY INDIVIDUAL AGE GROUP, EAST CLEVELAND, 2018



Source: U.S. Census Bureau, 2014-2018 American Community Survey, B01001



PATTISON PARK

East Cleveland, Ohio
Source: County Planning



SECTION 4

PROGRAMMING & MANAGEMENT PROFILE

This Section provides an overview of the activities and programming that take place in the City's parks, including sporting leagues, concerts, youth activities, and others to provide an introduction into how the parks are used by residents. This Section also includes an overview of the management of the City's parks system, budgets for park maintenance, and comparisons to national metrics.

Included in this Section are the following analyses:

- FORTHCOMING

FOR THE

COMING



County Planning

FOR OUR COMMUNITY
FOR OUR REGION
FOR OUR FUTURE