

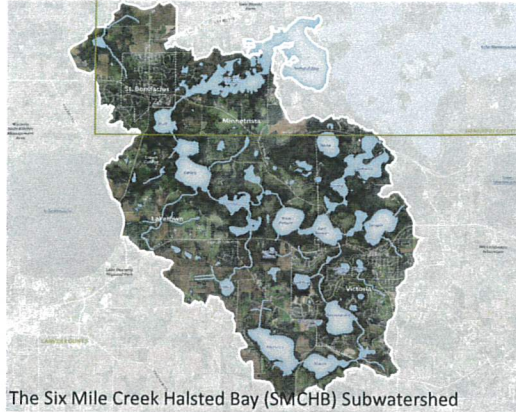
SIX MILE CREEK-HALSTED BAY SUBWATERSHED PARTNERSHIP

PARTNERING TO RESTORE THE WATERSHED'S HEADWATERS

The MCWD Board of Managers adopted the Six Mile Creek-Halsted Bay (SMCHB) subwatershed as a priority area because of its abundant natural resources, its location as the watershed's headwaters, and rapid development within the area.

SMCHB is a highly interconnected natural system. The 27-square-mile area drains into Six Mile Creek through 17 lakes and hundreds of acres of wetlands before emptying into Halsted Bay – the most degraded bay on Lake Minnetonka. Issues facing this system include degraded wetlands, high carp density, and changing land use.

MCWD is working to achieve significant, lasting water resource improvements while integrating our work with community partners to support park and open space planning, economic development and growth, and preservation of community assets.



The Six Mile Creek Halsted Bay (SMCHB) Subwatershed

WASSERMANN WEST ALUM TREATMENT

The six acre pond on the Wassermann Park Site is a primary contributor to nutrient pollution on Lake Wassermann.

MCWD has completed the first of two alum treatments on the pond, which will help to prevent ongoing nutrient pollution.

The treatment has resulted in an estimated 75 pound per year reduction of phosphorus into Lake Wassermann.



EAST AUBURN STORMWATER PONDS

MCWD and the City of Victoria leveraged grant dollars to retrofit two stormwater ponds in downtown Victoria.

The ponds include stormwater filters to remove dissolved phosphorus, which is typically harder to treat.

The project improves the treatment effectiveness of these ponds and facilitates new downtown development.



SMCHB CARP MANAGEMENT PROGRAM

MCWD is leading the state's largest and most comprehensive invasive common carp management program.

Common carp uproot plants and stir up lake bottoms, degrading habitat and promoting algae growth.

With funding from the Lessard Sams Outdoor Heritage Council, this program aims to permanently manage common carp to protect lake ecosystem across the SMCHB Subwatershed.



VICTORIA CHAIN OF LAKES GREENWAY

The City's 2040 Comprehensive Plan integrates natural resource protection, recreation planning, and development through a greenway corridor plan.

The greenway corridor will connect the City's most prized assets – its lakes, parks, and trails – while supporting the sustainable growth of the City.

MCWD and the City will work together to coordinate plans and investments within the greenway to realize the shared vision of a Victoria Chain of Lakes.



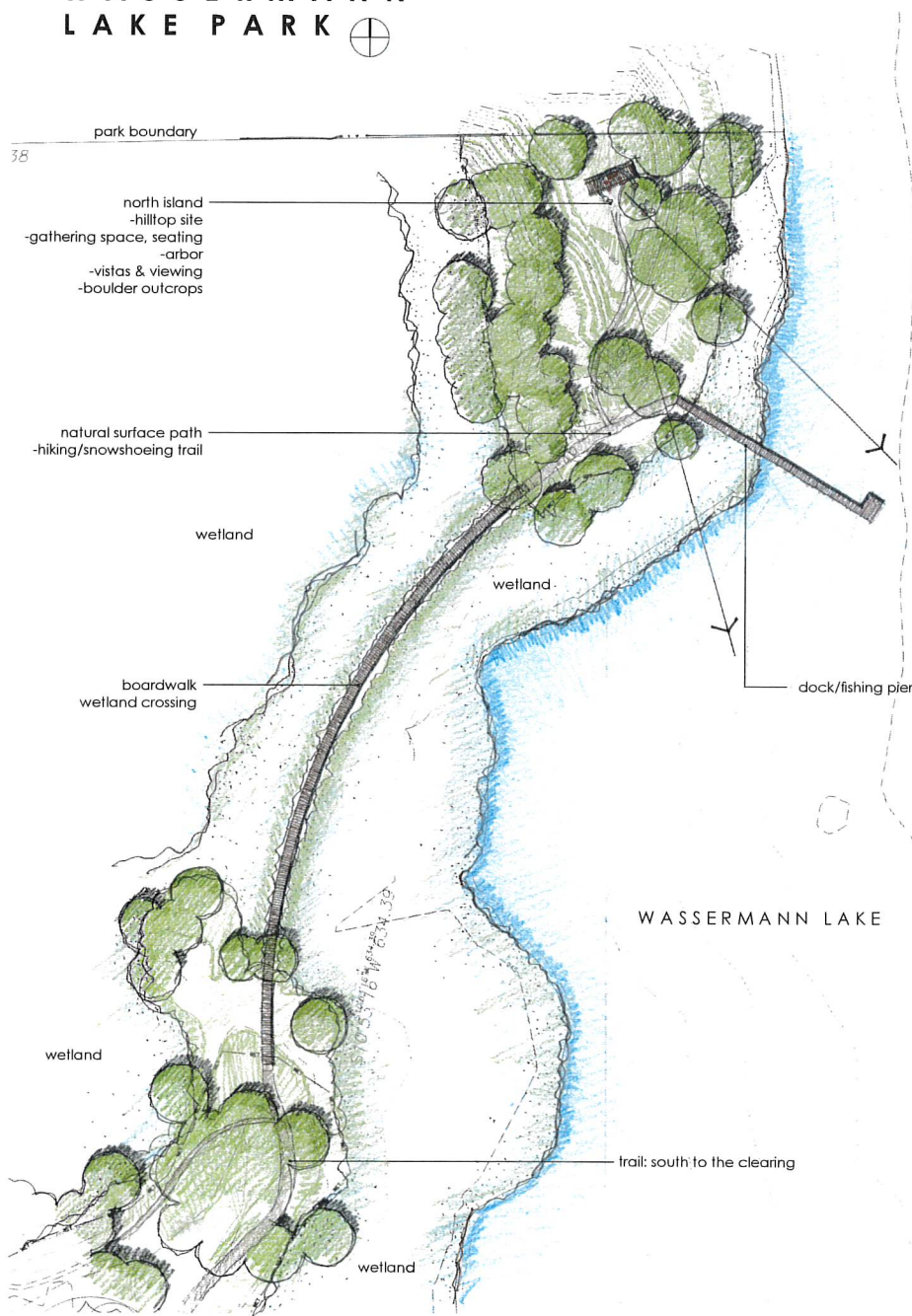
WASSERMANN LAKE PARK



September 30, 2019



WASSERMANN LAKE PARK



NATURE PLAY

FOREST CLIMBING FEATURES



"LOOSE PARTS" SHELTER MAKING MATERIALS



October 7, 2019

WASSERMANN LAKE P

[illegible]

WASSERMANN LAKE PARK



MINNEHAHA CREEK
WATERSHED DISTRICT
Open Water Day, Tuesday, August 14, 2012

CITY OF MINNEAPOLIS

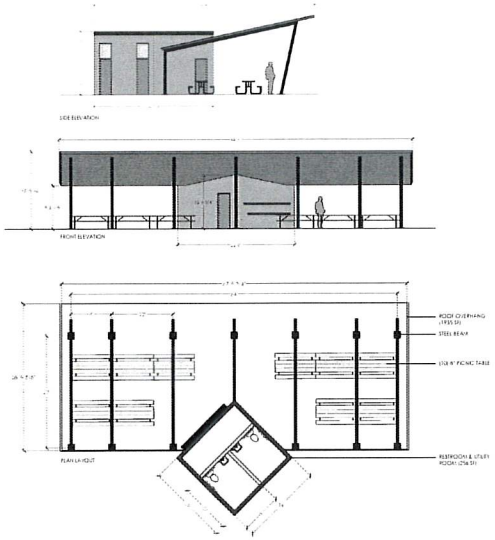
STATE OF MINNESOTA

[illegible]

WASSERMANN LAKE PARK



SHELTER



October 7, 2019

WASSERMANN LAKE PARK

