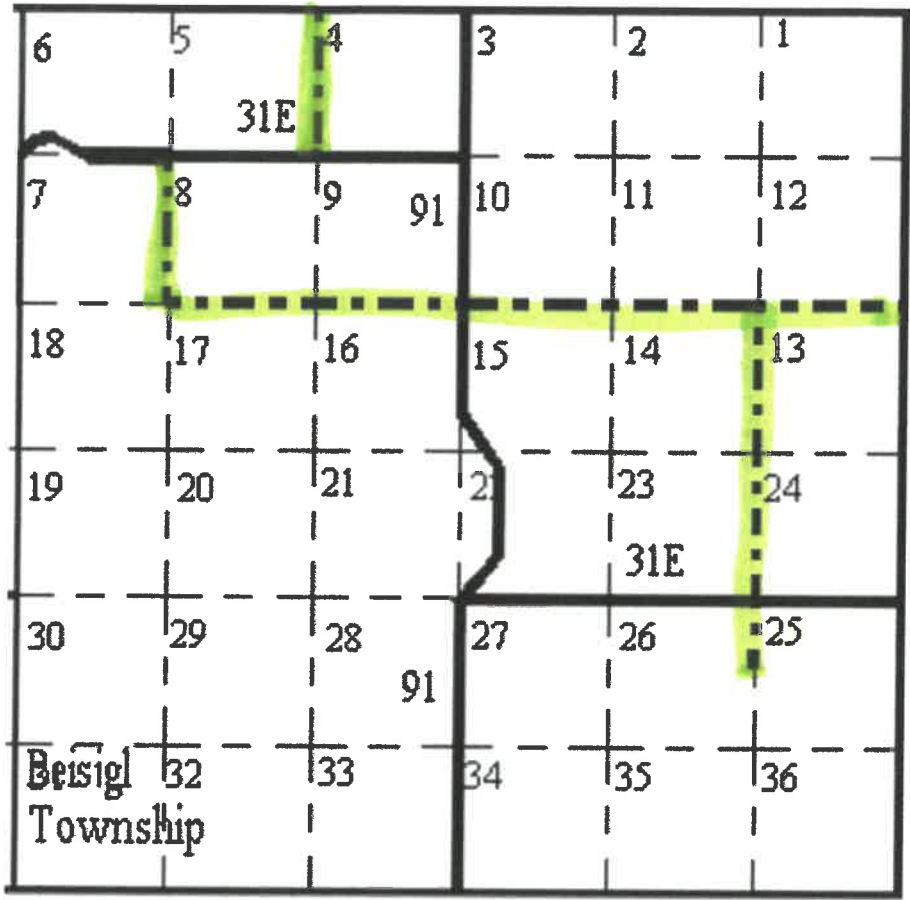


BEISIGL TOWNSHIP
2022
TOWNSHIP ROAD MOWING DESIGNATION MAP



ADAMS COUNTY, BEISIGL TOWNSHIP

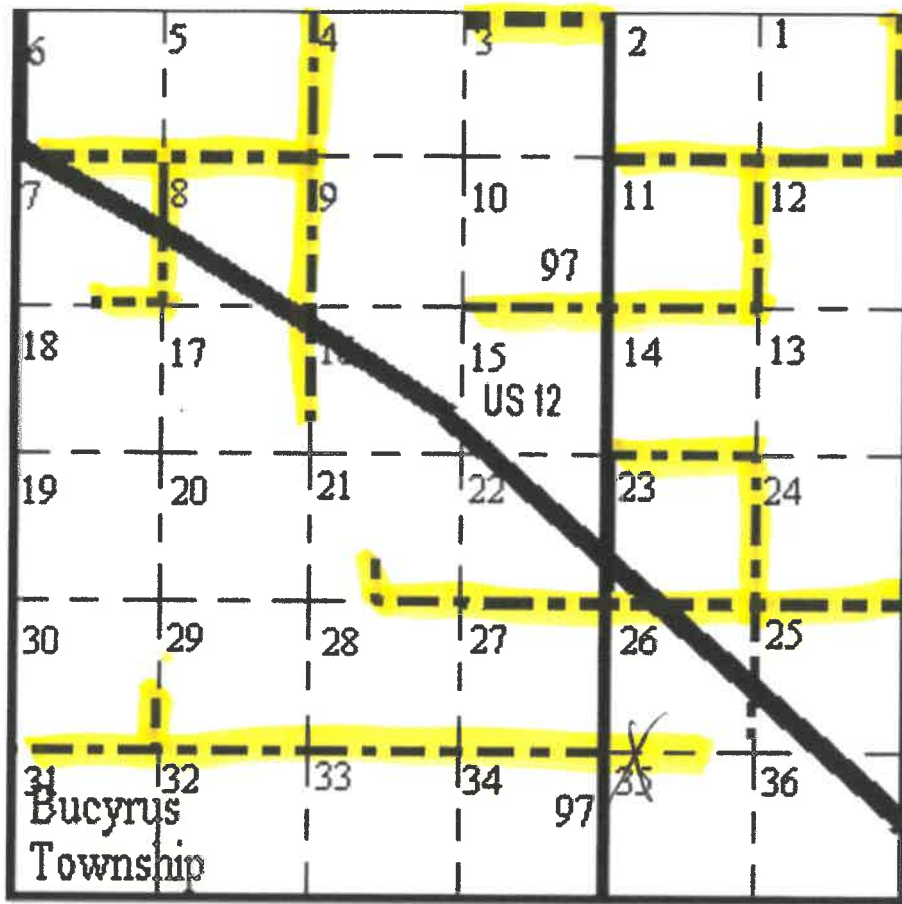
Please **designate the township roads** that must be mowed by the landowner, in the fall of each year. Mowing should be completed prior to September 15. This designation does **not** authorize County Forces to mow these roads in your township.

The township board as defined by the century code 63-05-02 requires this designation. Landowner/operator is responsible for mowing per fore mentioned century code. Failure to do so, landowner/operator may be levied \$225.00 per shoulder mile against property.

This map will be on file at the County Highway office for landowner information. Please return this map with your packet.

Donald Kutzer
 (CLERK OR SUPERVISOR)

BUCYRUS TOWNSHIP
2022
TOWNSHIP ROAD MOWING DESIGNATION MAP



ADAMS COUNTY, BUCYRUS TOWNSHIP

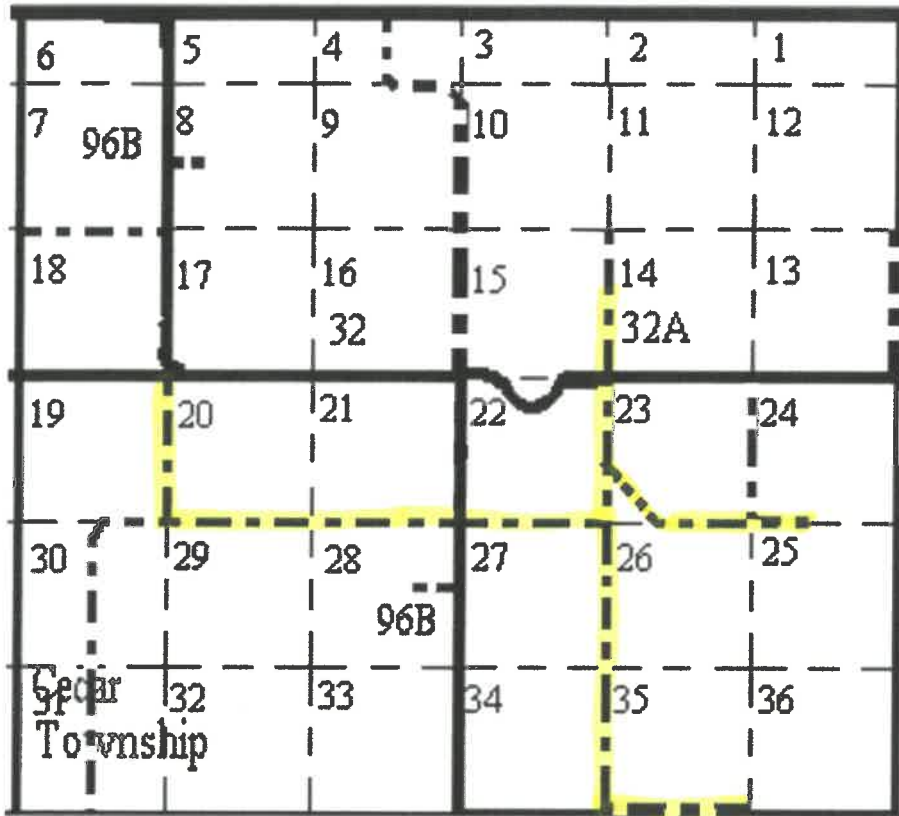
Please **designate the township roads** that **must be mowed by the landowner**, in the fall of each year. Mowing should be completed prior to September 15. This designation does **not** authorize County Forces to mow these roads in your township.

The township board as defined by the century code 63-05-02 requires this designation. Landowner/operator is responsible for mowing per fore mentioned century code. Failure to do so, landowner/operator may be levied \$225.00 per shoulder mile against property.

This map will be on file at the County Highway office for landowner information. Please return this map with your packet.

Rodney [Signature]
 (CLERK OR SUPERVISOR)

CEDAR TOWNSHIP
2022
TOWNSHIP ROAD MOWING DESIGNATION MAP

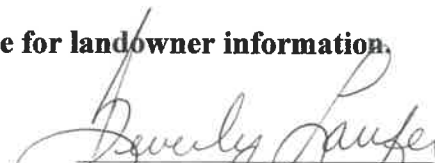


ADAMS COUNTY, CEDAR TOWNSHIP

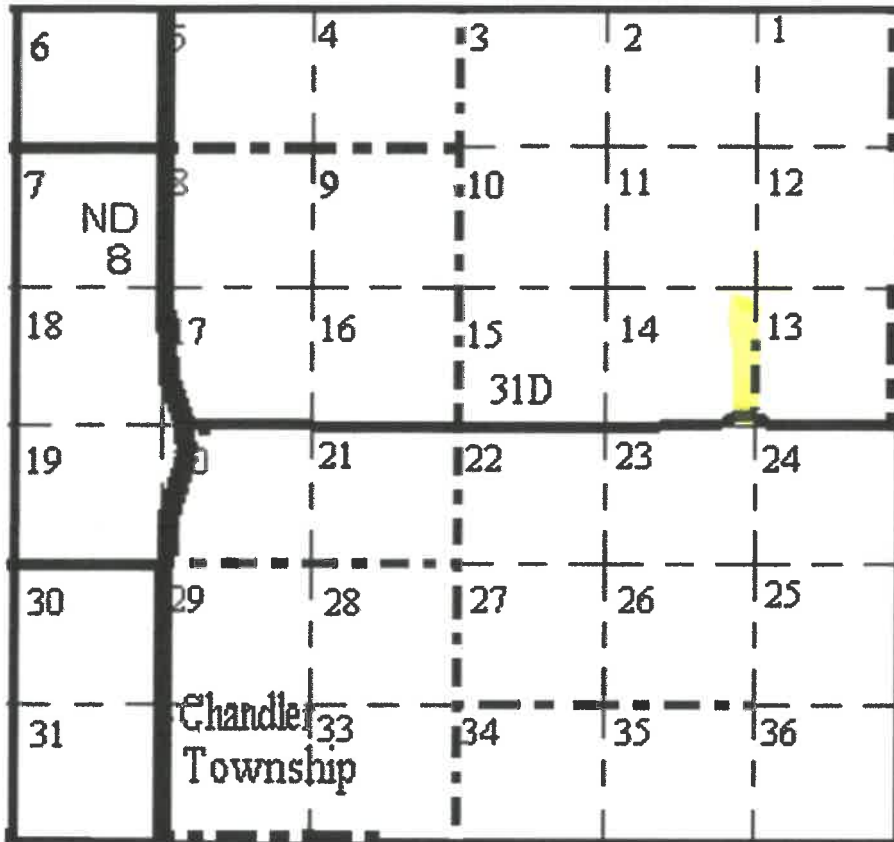
Please **designate the township roads** that must be mowed by the landowner, in the fall of each year. Mowing should be completed prior to September 15. This designation does **not** authorize County Forces to mow these roads in your township.

The township board as defined by the century code 63-05-02 requires this designation. Landowner/operator is responsible for mowing per fore mentioned century code. Failure to do so, landowner/operator may be levied \$225.00 per shoulder mile against property.

This map will be on file at the County Highway office for landowner information.
Please return this map with your packet.


(CLERK OR SUPERVISOR)

CHANDLER TOWNSHIP
2022
TOWNSHIP ROAD MOWING DESIGNATION MAP



ADAMS COUNTY, CHANDLER TOWNSHIP

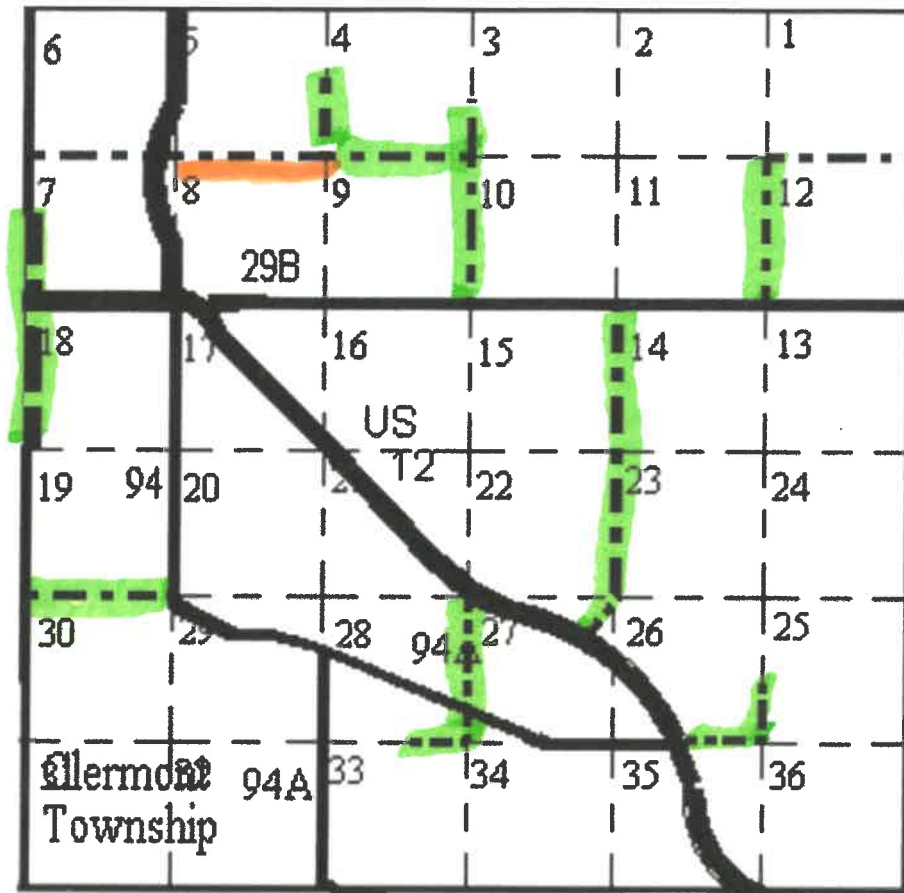
Please **designate the township roads** that must be mowed by the landowner, in the fall of each year. Mowing should be completed prior to September 15. This designation does **not** authorize County Forces to mow these roads in your township.

The township board as defined by the century code 63-05-02 requires this designation. Landowner/operator is responsible for mowing per fore mentioned century code. Failure to do so, landowner/operator may be levied \$225.00 per shoulder mile against property.

This map will be on file at the County Highway office for landowner information. Please return this map with your packet.

Don West
 (CLERK OR SUPERVISOR)

CLERMONT TOWNSHIP
2022
TOWNSHIP ROAD MOWING DESIGNATION MAP



ADAMS COUNTY, CLERMONT TOWNSHIP

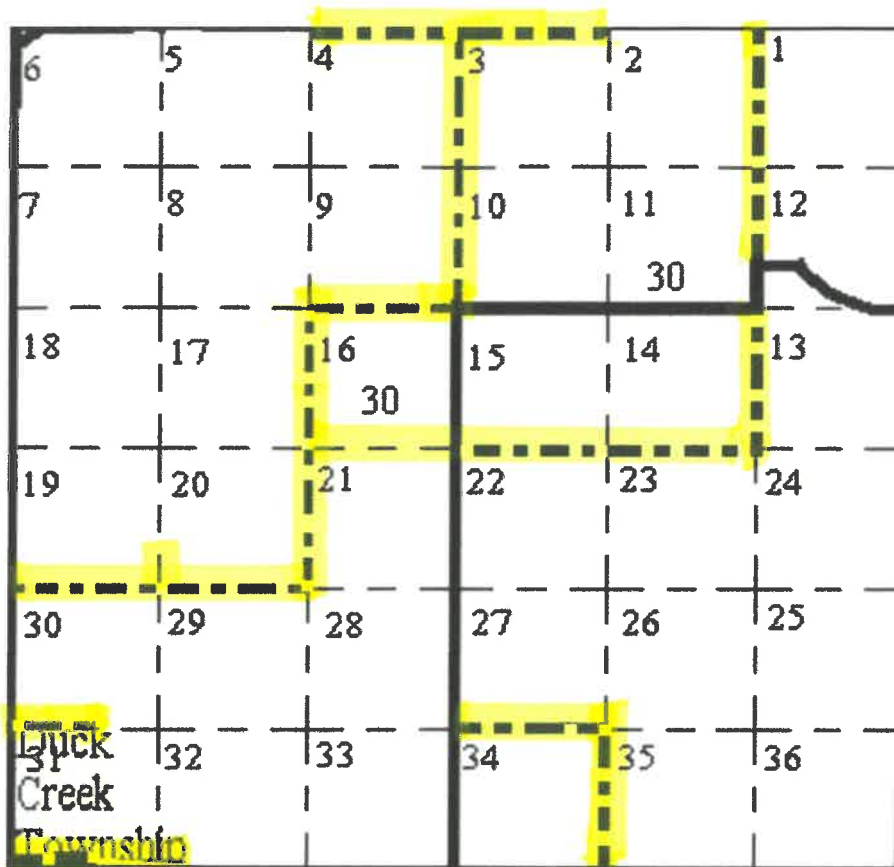
Please **designate the township roads** that **must be mowed by the landowner**, in the fall of each year. Mowing should be completed prior to September 15. This designation does **not** authorize County Forces to mow these roads in your township.

The township board as defined by the century code 63-05-02 requires this designation. Landowner/operator is responsible for mowing per fore mentioned century code. Failure to do so, landowner/operator may be levied \$225.00 per shoulder mile against property.

This map will be on file at the County Highway office for landowner information. Please return this map with your packet.

Mindy Mason
 (CLERK OR SUPERVISOR)

DUCK CREEK TOWNSHIP
2022
TOWNSHIP ROAD MOWING DESIGNATION MAP



ADAMS COUNTY, DUCK CREEK TOWNSHIP

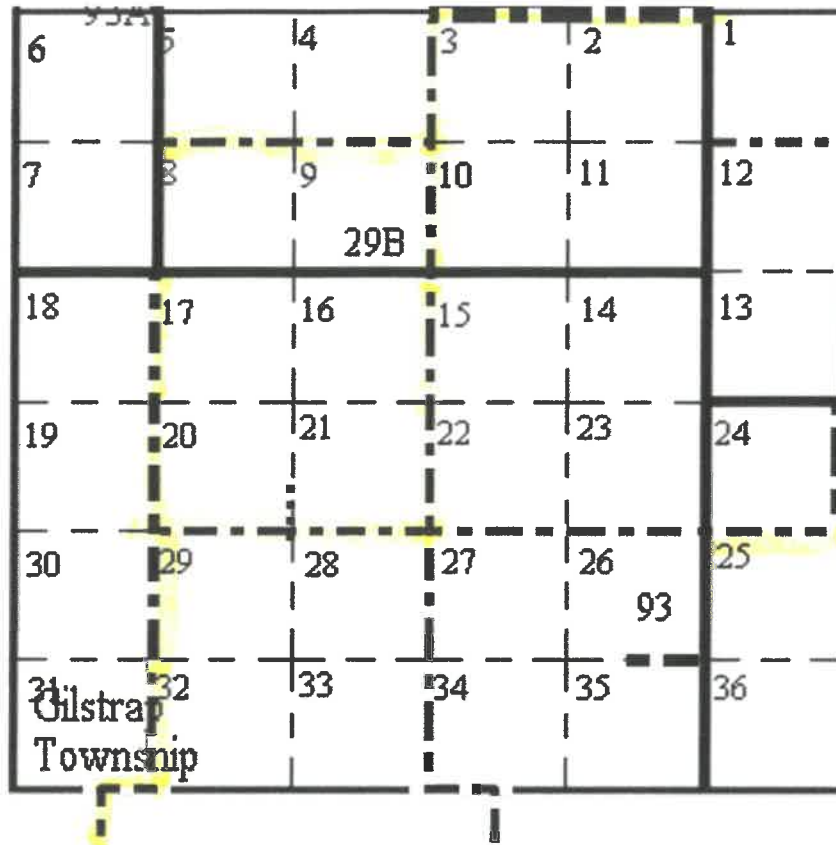
Please **designate the township roads** that must be mowed by the landowner, in the fall of each year. Mowing should be completed prior to September 15. This designation does **not** authorize County Forces to mow these roads in your township.

The township board as defined by the century code 63-05-02 requires this designation. Landowner/operator is responsible for mowing per fore mentioned century code. Failure to do so, landowner/operator may be levied \$225.00 per shoulder mile against property.

This map will be on file at the County Highway office for landowner information. Please return this map with your packet.

Nancy Secret
 (CLERK OR SUPERVISOR)

GILSTRAP TOWNSHIP
2022
TOWNSHIP ROAD MOWING DESIGNATION MAP



ADAMS COUNTY, GILSTRAP TOWNSHIP

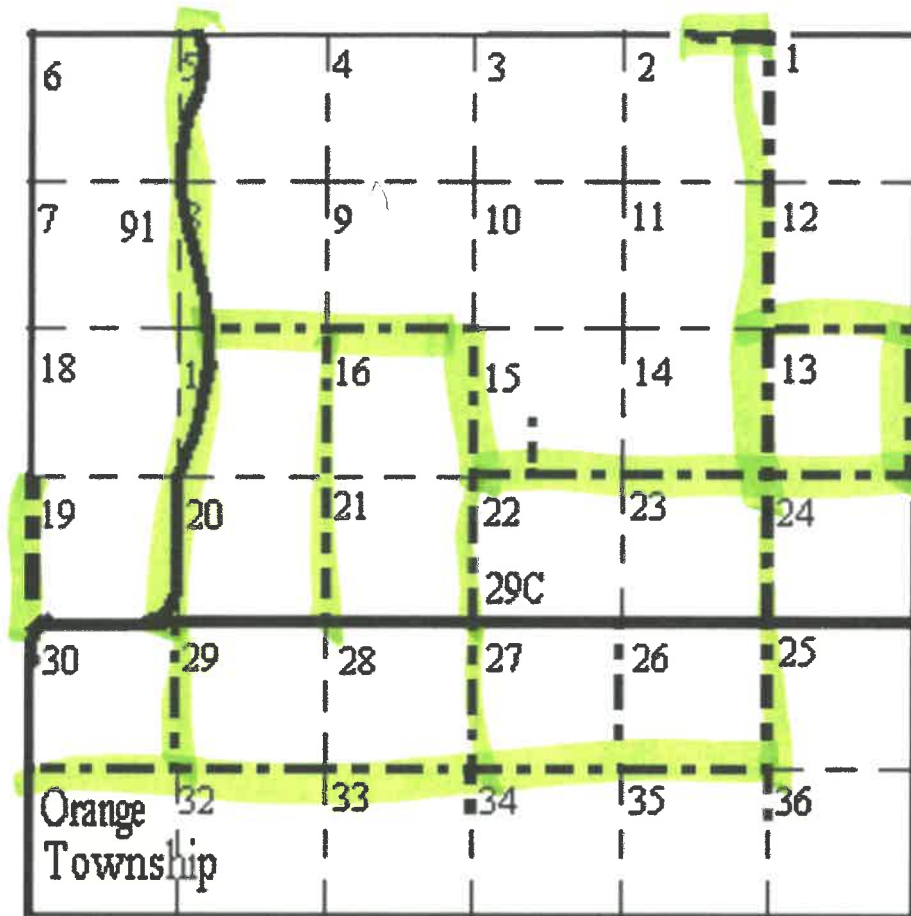
Please **designate the township roads** that **must be mowed by the landowner**, in the fall of each year. Mowing should be completed prior to September 15. This designation does **not** authorize County Forces to mow these roads in your township.

The township board as defined by the century code 63-05-02 requires this designation. Landowner/operator is responsible for mowing per fore mentioned century code. Failure to do so, landowner/operator may be levied \$225.00 per shoulder mile against property.

This map will be on file at the County Highway office for landowner information. Please return this map with your packet.


(CLERK OR SUPERVISOR)

ORANGE TOWNSHIP
2022
TOWNSHIP ROAD MOWING DESIGNATION MAP



ADAMS COUNTY, ORANGE TOWNSHIP

Please **designate the township roads** that must be mowed by the landowner, in the fall of each year. Mowing should be completed prior to September 15. This designation does **not** authorize County Forces to mow these roads in your township.

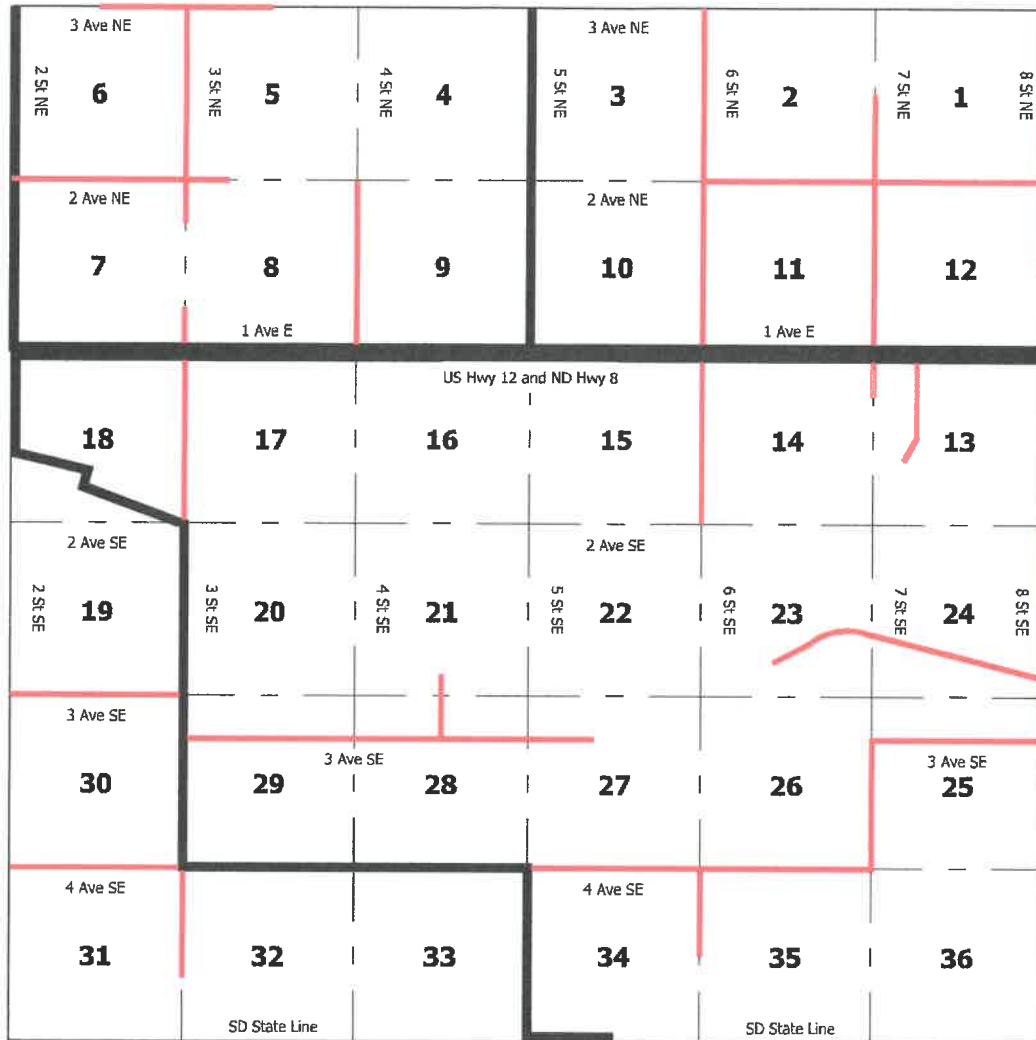
The township board as defined by the century code 63-05-02 requires this designation. Landowner/operator is responsible for mowing per fore mentioned century code. Failure to do so, landowner/operator may be levied \$225.00 per shoulder mile against property.

This map will be on file at the County Highway office for landowner information. Please return this map with your packet.

Susan Harwood (CLERK OR SUPERVISOR)

**SCOTT TOWNSHIP
2022**

TOWNSHIP ROAD MOWING DESIGNATION MAP



Legend

- US or State Highway County Road Township Roads for Landowner Mowing
- Section Line

FEBRUARY 2022
ADAMS COUNTY, SCOTT TOWNSHIP

Please designate the township roads that must be mowed by the landowner, in the fall of each year.

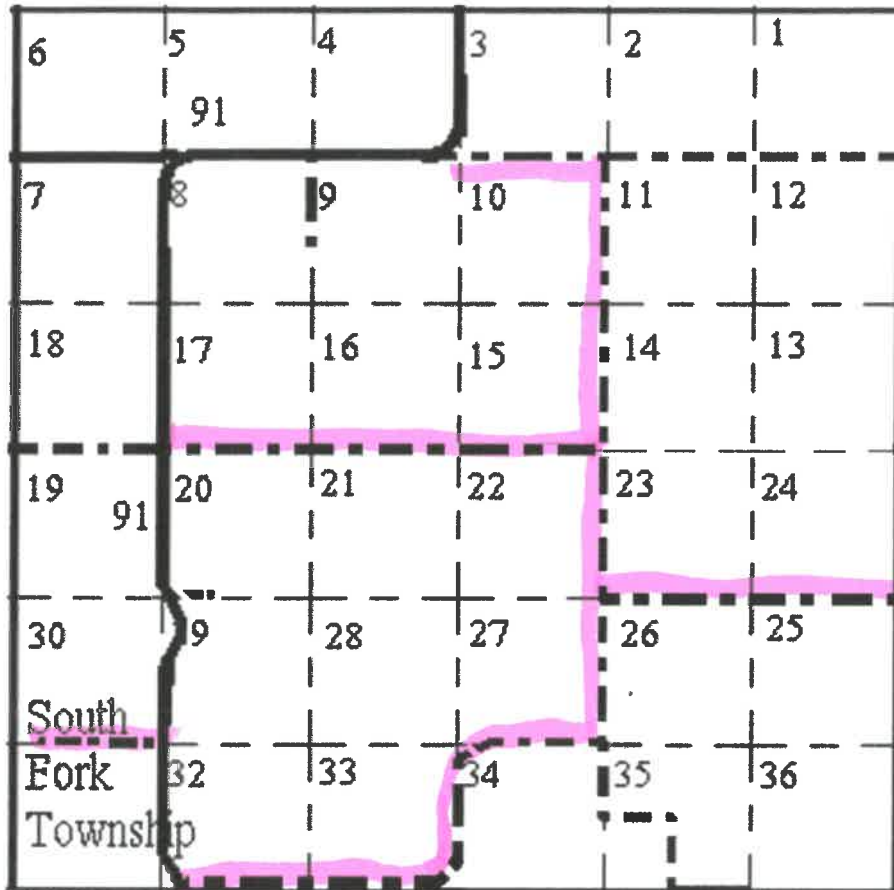
The township board as defined by the century code 63-05-02 requires this designation. Please return this map with your packet.

This designation does not authorize County Forces to mow these roads in your township.

This map will be on file at the County Auditors Office, for landowner information.

Clayton L. Miller
(CLERK OR SUPERVISOR)

SOUTH FORK TOWNSHIP
2022
TOWNSHIP ROAD MOWING DESIGNATION MAP

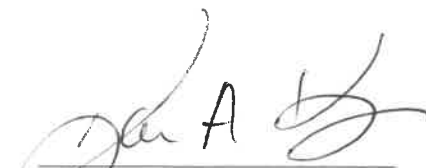


ADAMS COUNTY, SOUTH FORK TOWNSHIP

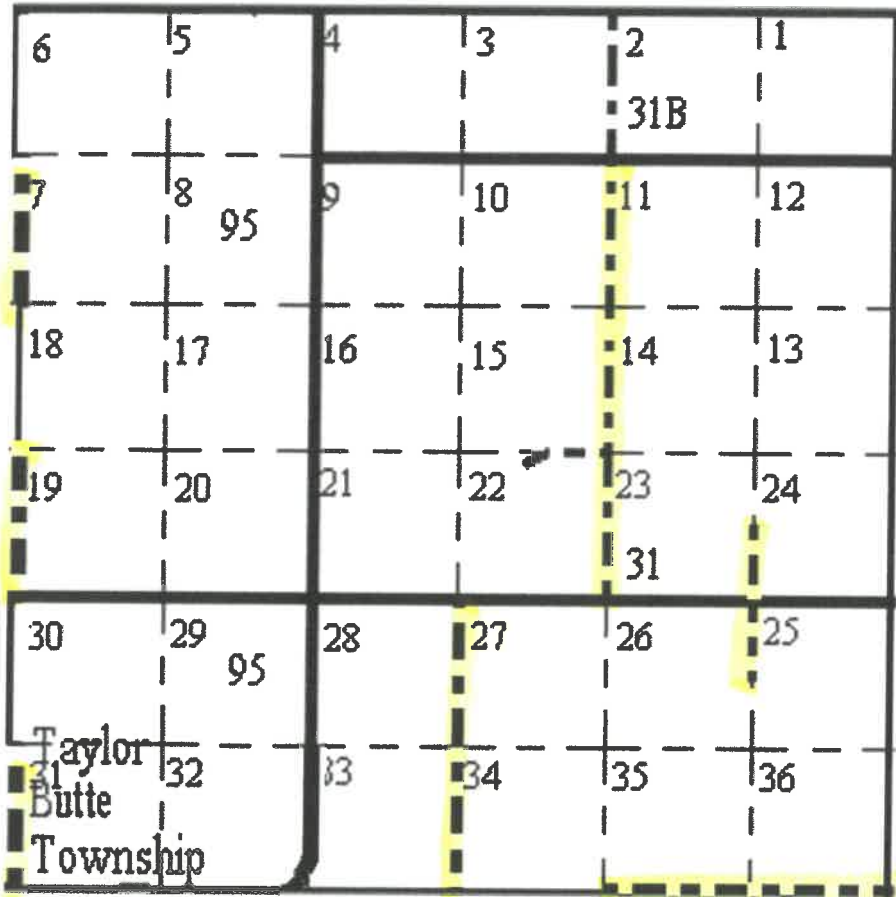
Please **designate the township roads** that **must be mowed by the landowner**, in the fall of each year. Mowing should be completed prior to September 15. This designation does **not** authorize County Forces to mow these roads in your township.

The township board as defined by the century code 63-05-02 requires this designation. Landowner/operator is responsible for mowing per fore mentioned century code. Failure to do so, landowner/operator may be levied \$225.00 per shoulder mile against property.

This map will be on file at the County Highway office for landowner information.
Please return this map with your packet.


(CLERK OR SUPERVISOR)

TAYLOR BUTTE TOWNSHIP
2022
TOWNSHIP ROAD MOWING DESIGNATION MAP



ADAMS COUNTY, TAYLOR BUTTE TOWNSHIP

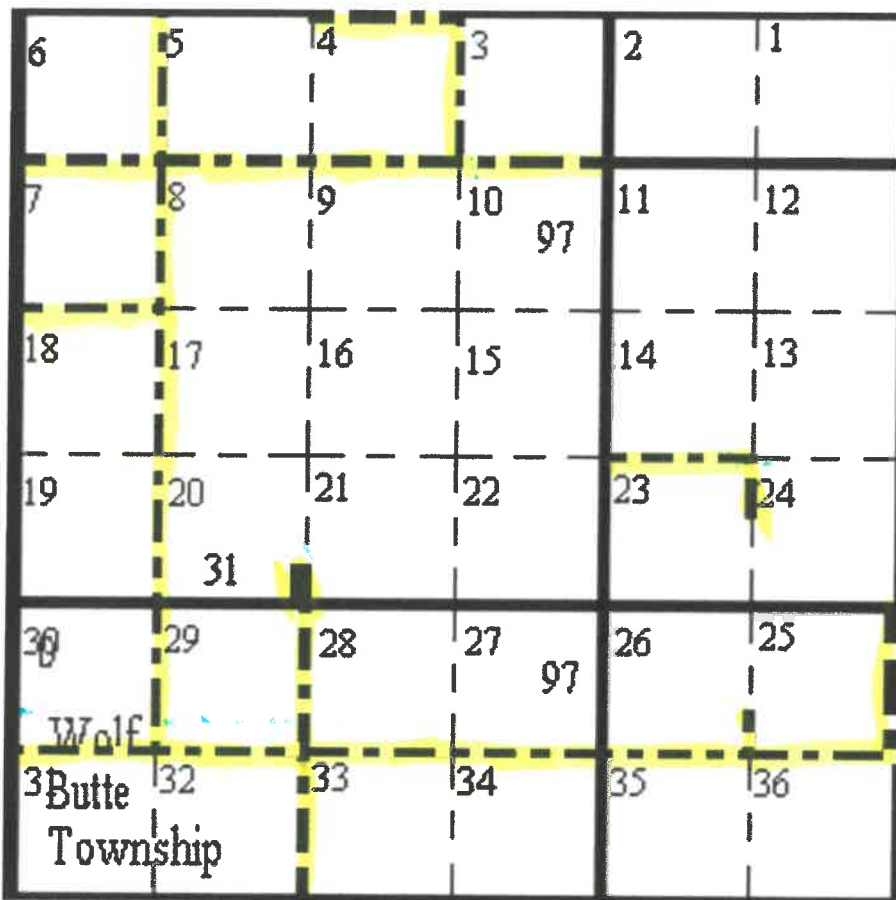
Please **designate the township roads** that must be mowed by the landowner, in the fall of each year. Mowing should be completed prior to September 15. This designation does **not** authorize County Forces to mow these roads in your township.

The township board as defined by the century code 63-05-02 requires this designation. Landowner/operator is responsible for mowing per fore mentioned century code. Failure to do so, landowner/operator may be levied \$225.00 per shoulder mile against property.

This map will be on file at the County Highway office for landowner information. Please return this map with your packet.


 (CLERK OR SUPERVISOR)

WOLF BUTTE TOWNSHIP
2022
TOWNSHIP ROAD MOWING DESIGNATION MAP



ADAMS COUNTY, WOLF BUTTE TOWNSHIP

Please **designate the township roads** that **must be mowed by the landowner**, in the fall of each year. Mowing should be completed prior to September 15. This designation does **not** authorize County Forces to mow these roads in your township.

The township board as defined by the century code 63-05-02 requires this designation. Landowner/operator is responsible for mowing per fore mentioned century code. Failure to do so, landowner/operator may be levied \$225.00 per shoulder mile against property.

This map will be on file at the County Highway office for landowner information. Please return this map with your packet.

Jan Madach
 (CLERK OR SUPERVISOR)